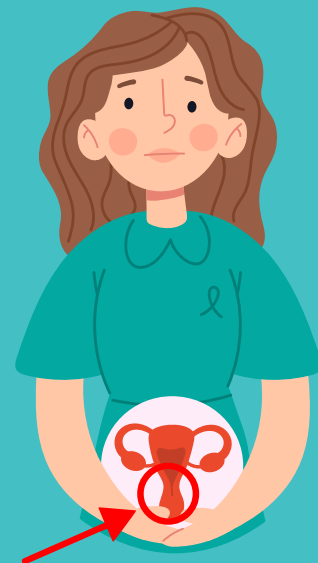


# JANUARY IS CERVICAL HEALTH AWARENESS MONTH

## Cervical Cancer:

- Cancer that starts in the cervix, the lowest part of a woman's uterus.
- Most are linked to infection with certain types of Human Papilloma Virus (HPV).
- Usually grows slowly, making it one of the most preventable cancers with regular screening and HPV vaccination.
- If you have a cervix, you are at risk.



## How is Cervical Cancer Found?

- A screening called a Pap test. This test collects cells from the surface of the cervix and vagina.
- The Pap test can find cancer before it starts!

## Get a Pap Test if you are:

- A woman 21 years and older. Talk to your provider if you have any questions or concerns.

For more information visit:  
[shorturl.at/kvLXy](https://shorturl.at/kvLXy)

