



RESOURCE AND PATIENT MANAGEMENT SYSTEM

RPMS/Ensemble Cache Classes Database File

(BMW)

BMW Installation Guide

Version 2024.4
January 2025

Office of Information Technology
Division of Information Technology

Table of Contents

- 1.0 Release Notes 1**
- 2.0 Installation Notes..... 2**
 - 2.1 Contents of Distribution 2
 - 2.2 Required Database Server Resources 2
 - 2.3 IRIS Prerequisites..... 2
- 3.0 Installation Instructions 3**
- 4.0 Installation and Configuration..... 4**
 - 4.1 Assumptions 4
 - 4.2 Installation 4
 - 4.2.1 Download the BMW File 4
 - 4.2.2 Create the /BMW Folder 4
 - 4.2.3 Unzip the BMW ZIP File 5
 - 4.2.4 Move the BMW File to the Database Server..... 5
 - 4.2.5 Set File and Folder Permissions 5
 - 4.2.6 Set Up the BMW Database 6
 - 4.2.7 Mount the BMW Database 9
 - 4.2.8 Create the New Namespace..... 11
 - 4.2.9 Check and Remove Mirror Bit..... 12
 - 4.3 Package Mapping 13
 - 4.3.1 Set Up Package Mapping 13
 - 4.3.2 Verify Package Mapping..... 15
 - 4.4 Global Mappings..... 16
 - 4.5 Verify BMW Version Installed 19
- 5.0 Installing File Updates 20**
 - 5.1 Updating the BMW IRIS.DAT File..... 20
 - 5.1.1 Acquire the Latest BMW build File..... 20
 - 5.1.2 Unzip the BMW ZIP File 20
 - 5.1.3 Stop the BPRM Web Site on the Application Server 20
 - 5.1.4 Stop CCDA Messaging..... 22
 - 5.1.5 Stop CCDA Production..... 23
 - 5.1.6 Stop BQRE Extract..... 26
 - 5.1.7 BUSA Reports 26
 - 5.1.8 Dismount the BMW Database on the Database Server..... 26
 - 5.1.9 Move the New IRIS.DAT File..... 28
 - 5.1.10 Mount the BMW Database 28
 - 5.2 Purge the Previous SQL Queries 29
 - 5.3 Re-import BPRM XML 30
 - 5.4 Start the BPRM Web Site on the Application Server 30
 - 5.5 Re-import BQRE XML 30
 - 5.6 Start CCDA Messaging..... 31

5.7	Starting CCDA Production	31
5.8	Verify BMW Version Installed	31
5.9	Enable/Start Dependent Applications	31
Acronym List		32
Contact Information		33

Preface

This manual describes the installation of the BMW IRIS.DAT file used by the following dependent applications:

- BPRM
- BQRE
- CCDA
- BUSA

BMW 2024.4 provides CHIT complaint cache classes used by the dependent applications. The versioning information indicates the calendar year and quarter in which the BMW IRIS.DAT file is released.

1.0 Release Notes

This release of the stand-alone BMW IRIS.DAT file supports changes for following additional patches:

- BCQM (bcqm0100.12)

2.0 Installation Notes

Prefix: BMW
Current Version: 2024.4

2.1 Contents of Distribution

Table 2-1: Distributed Files and Descriptions

File	Description
bmw_2024.4_win_IRIS.zip	BMW build file for Windows systems
bmw_2024.4_aix_IRIS.tar.gz	BMW build file for AIX systems
bmw_2024.4i.pdf	Installation Guide

2.2 Required Database Server Resources

The BMW file requires a minimum 10 GB of free disk space on the database server.

2.3 IRIS Prerequisites

This BMW file is currently supported on Intersystems IRIS v2022.1.3. Do not mount this database on an Intersystems HealthShare system.

This BMW version accumulates all changes/functionality in previously released BMW patches.

The examples in this Installation Manual reflect IRIS v2022.1.3. If the site is running a different version, some of the screens may vary slightly from those shown in this manual.

3.0 Installation Instructions

The BMW build file is a required component of several IHS RPMS applications. It must be present for these applications to successfully operate.

As a strategy to minimize changes to the Resource and Patient Management System (RPMS) database, the BMW file is mounted as a separate database on an IRIS server. This database contains already generated Cache classes against FileMan files.

The classes in the BMW database are generated in a specific package called BMW. The BMW package can be mapped onto the RPMS database, thus enabling the RPMS database to take advantage of the mapped classes. The Cache-generated classes will reside in the BMW database, yet remain available to the RPMS database, thus achieving the goal of minimizing steps for the BMW database setup when it is scaled onto several sites.

Follow the instructions shown in Section 4.0 if the BMW is being installed for the first time. Refer to Section 5.0 if an earlier version of the is installed at the site.

4.0 Installation and Configuration

4.1 Assumptions

This section assumes the following:

- The IRIS server (running one of the supported versions) has already been set up.
- An RPMS database is already set up on the IRIS server.
- The user performing the installation and configuration has the appropriate rights to mount databases.

In this manual, MSDB is the name of the RPMS database used. The name may be different on site's system. The steps shown in the following sections will guide the user through setting up the BMW database for the IHS RPMS environment.

4.2 Installation

4.2.1 Download the BMW File

Download the desired version of BMW file from the Indian Health Service (IHS) File

Transfer Protocol (FTP) site. Alternatively, find the RPMS/Ensemble Cache Classes Database File (BMW) here: <https://www.ihs.gov/rpms/applications/infrastructure/>.

4.2.2 Create the /BMW Folder

Create a **/BMW** folder under the default database folder on the database server. This is the folder where the BMW IRIS.DAT file will reside.

For Windows systems, follow these steps (substituting the appropriate drive letter and folder names):

1. Using Windows Explorer, navigate to **D:\EnsembleData** or **D:\IRISData** or to where the IRIS databases reside on the database server.
2. Click **Organize**, then select **New Folder**.
3. Type **BMW**, and press Enter to create the **D:\IRISData\BMW** folder.

For AIX systems, issue the following command at the command prompt.

<p>Note: This example uses usr3 as the default database directory. Your default directory will likely be different.</p>
--


```
$mkdir /usr3/cachedata/bmw/
```

Figure 4-1: Command prompt

4.2.3 Unzip the BMW ZIP File

Using the appropriate utility for the file format provided, unzip the BMW file into IRIS.DAT file, which will be mounted onto the IRIS server in the steps shown in Section 4.2.7.

Unzip this file on a workstation or other local machine, not on your database server itself. After it is unzipped, it will be moved to the database server as described in Section 4.2.4.

4.2.4 Move the BMW File to the Database Server

After unzipping the compressed file, move the IRIS.DAT file contained within it to the /BMW folder created in Section 4.2.1:

- If installing on a Windows database server, this file move can be done directly through the network or via Remote Desktop Connection, depending on site requirements.
- On an AIX database server, it may be required to use FTP or another similar file transfer program to move the file.

4.2.5 Set File and Folder Permissions

The BMW IRIS.DAT file needs specific access permissions (also known as access rights on AIX systems) to access the IRIS.DAT file and the folder in which it is stored. On Windows servers, the necessary permissions are typically set up by default.

On AIX servers, the necessary rights are not established by default. To set the access rights on an AIX server:

1. Type the command at the AIX command prompt to navigate to the folder where IRIS.DAT is stored.

Note: That this example uses **usr3** as the default database directory. Your default directory will likely be different.

```
$cd /usr3/cachedata/
```

Figure 4-2: AIX Command prompt

2. Type the following command to set the permissions for the /bmw directory:

```
$chmod 770 /usr3/cachedata/bmw
```

Figure 4-3: Command prompt for setting permissions for /bmw directory


3. Type the following command to set the permissions for the **IRIS.DAT** file:

```
$chmod 775 /usr3/cachedata/bmw/IRIS.DAT
```

Figure 4-4: Command prompt for setting permission for IRIS.DAT file

4.2.6 Set Up the BMW Database

Mount the unzipped BMW database using the IRIS System Management Portal, a component of IRIS:

1. Right-click the IRIS icon () in the Windows Notification Area. The menu in Figure 4-5 displays.

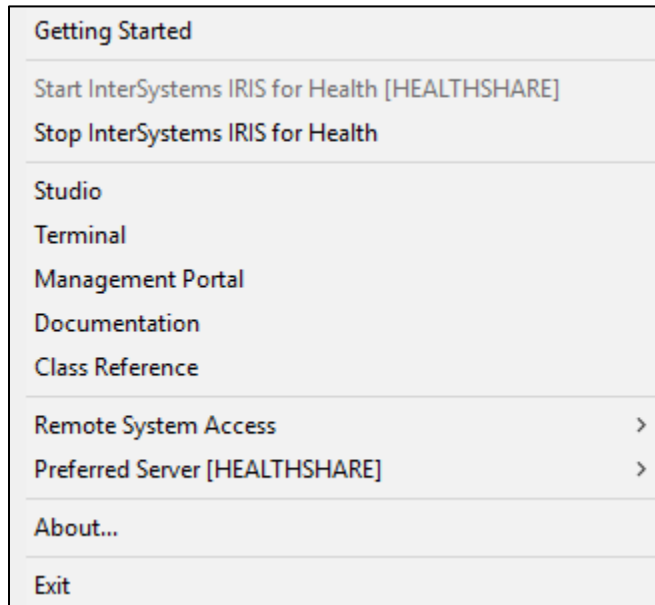


Figure 4-5: Opening the IRIS System Management portal

2. Select **System Management Portal**.

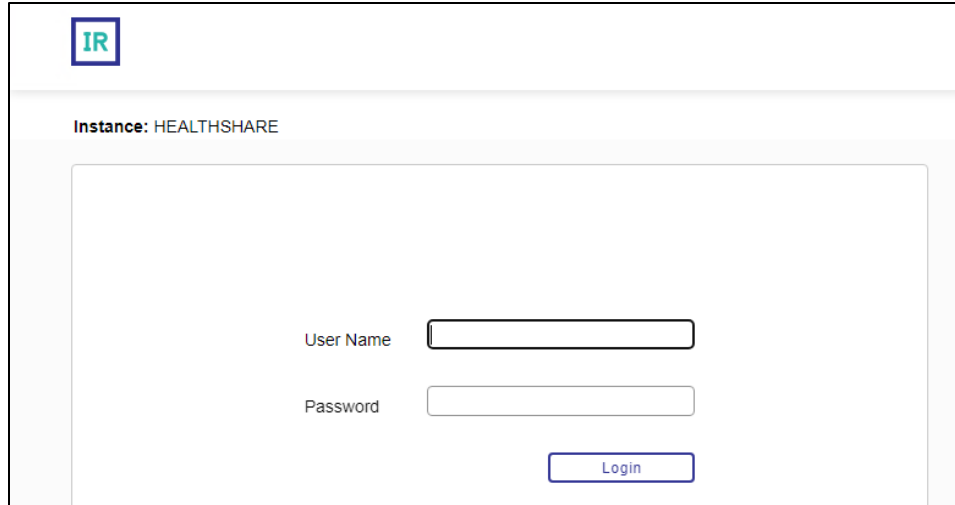


Figure 4-6: IRIS login dialog

3. Type your Ensemble/Cache user name and password in the window displayed (Figure 4-6). Click **Login**.
4. From the Ensemble/Cache **System Management Portal Home** window click **System Administration > Configuration > System Configuration > Local Databases** as shown in Figure 4-7:

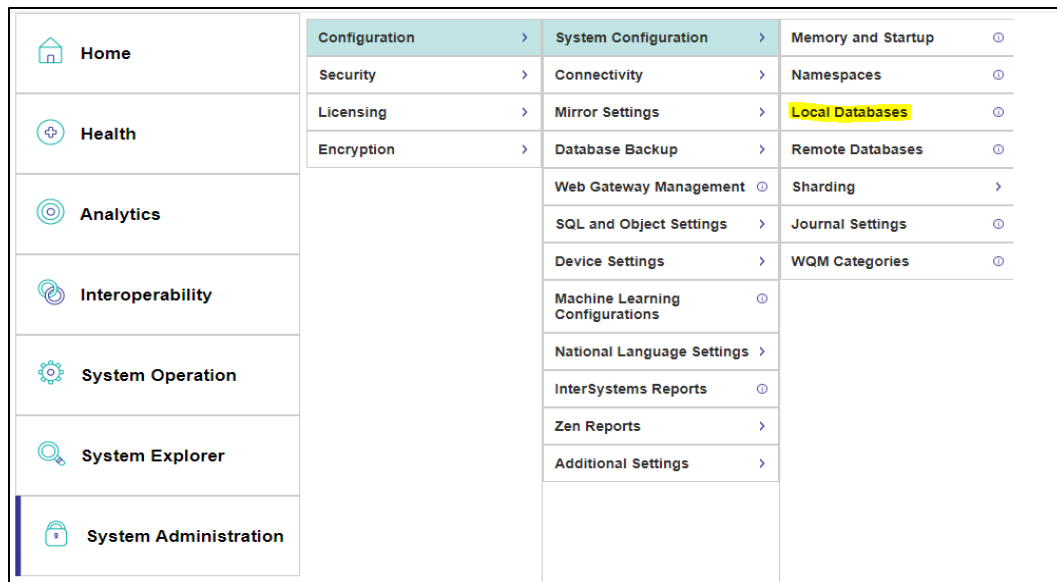


Figure 4-7: **System Management Portal – Local Databases** selected

5. The **Local Databases** window displays as shown in Figure 4-8.

System > Configuration > Local Databases

Local Databases

[Create New Database](#) Last update: 2024-02-06 11:45:36.227

The following is a list of the local databases:

Filter: Page size: Max rows: 1000 Results: 26 Page: of 1

Name	Directory	Size (MB)	Status	Resource	Encrypted	Journal	
IRISSYS	d:\intersystems\healthshare\mgr\	170	Mounted/RW	%DB_IRISSYS	No	Yes	- Globals
IRISLIB	d:\intersystems\healthshare\mgr\irislib\	360	Mounted/R	%DB_IRISLIB	No	No	- Globals
IRISTEMP	d:\intersystems\healthshare\mgr\iristempl	1969	Mounted/RW	%DB_IRISTEMP	No	No	- Globals
IRISLOCALDATA	d:\intersystems\healthshare\mgr\irislocaldata\	114	Mounted/RW	%DB_IRISLOCALDATA	No	No	- Globals
IRISAUDIT	d:\intersystems\healthshare\mgr\irisaudit\	11	Mounted/RW	%DB_IRISAUDIT	No	Yes	- Globals
AGMPIPRECERT	f:\ensembledatabases\agmpiprecert\	7715	Mounted/RW	%DB_%DEFAULT	No	No	Delete Globals
BCOMPRECERT	e:\ensembledatabases\bcomprecert\	20	Mounted/RW	%DB_%DEFAULT	No	Yes	Delete Globals
BJVNPRECERT	e:\ensembledatabases\bjvnprecert\	21	Mounted/RW	%DB_%DEFAULT	No	Yes	Delete Globals
BLEPRECERT	e:\ensembledatabases\bleprecert\	21	Mounted/RW	%DB_%DEFAULT	No	Yes	Delete Globals
BMW	f:\ensembledatabases\bmw\	6858	Mounted/RW	%DB_%DEFAULT	No	No	Delete Globals
BUSAPRECERT	f:\ensembledatabases\busaprecert\	46528	Mounted/RW	%DB_%DEFAULT	No	No	Delete Globals
C32PRECERT	f:\ensembledatabases\c32precert\	162	Mounted/RW	%DB_%DEFAULT	No	Yes	Delete Globals
CCDAPRECERT	f:\ensembledatabases\ccdaprecert\	461	Mounted/RW	%DB_%DEFAULT	No	No	Delete Globals
DBA	f:\ensembledatabases\dba\	1175	Mounted/RW	%DB_DBA	No	Yes	Delete Globals
DEV	f:\ensembledatabases\dev\	1486	Mounted/RW	%DB_DEV	No	Yes	Delete Globals
DEVGLD	f:\ensembledatabases\devgld\	7421	Mounted/RW	%DB_%DEFAULT	No	No	Delete Globals
EDRGLD	f:\ensembledatabases\edrgld\	1027	Mounted/RW	%DB_%DEFAULT	No	No	Delete Globals
ENSEMBLE	d:\intersystems\healthshare\mgr\ensemble\	21	Mounted/RW	%DB_ENSEMBLE	No	Yes	Delete Globals
ENSLIB	d:\intersystems\healthshare\mgr\enslib\	210	Mounted/R	%DB_ENSLIB	No	No	Delete Globals
ERXPRECERT	f:\ensembledatabases\erxprecert\	571	Mounted/RW	%DB_%DEFAULT	No	No	Delete Globals
HSCUSTOM	d:\intersystems\healthshare\mgr\hscustom\	21	Mounted/RW	%DB_HSCUSTOM	No	Yes	Delete Globals
HSLIB	d:\intersystems\healthshare\mgr\hslib\	1220	Mounted/R	%DB_HSLIB	No	No	Delete Globals
HSSYS	d:\intersystems\healthshare\mgr\hssys\	21	Mounted/RW	%DB_HSSYS	No	Yes	Delete Globals
JVN_DEHR_DB	e:\ensembledatabases\jvn_dehr_db\	21	Mounted/RW	%DB_%DEFAULT	No	Yes	Delete Globals
PRECERT	e:\ensembledatabases\precert\	73960	Mounted/RW	%DB_%DEFAULT	No	No	Delete Globals
USER	d:\intersystems\healthshare\mgr\user\	1	Mounted/RW	%DB_USER	No	Yes	Delete Globals

Figure 4-8: Local Databases window

6. Select **Create New Database** in the upper left of the **Local Databases** window. The **Database Wizard** (Figure 4-9) window displays.
7. In the **Enter the name of your database** field, type **BMW**.
8. Click **Browse** and browse to the folder where the **BMW** database is located, on the IRIS server, as described in Section 4.2.3. (The correct folder is labeled **\BMW** and contains the **IRIS.DAT** file.)

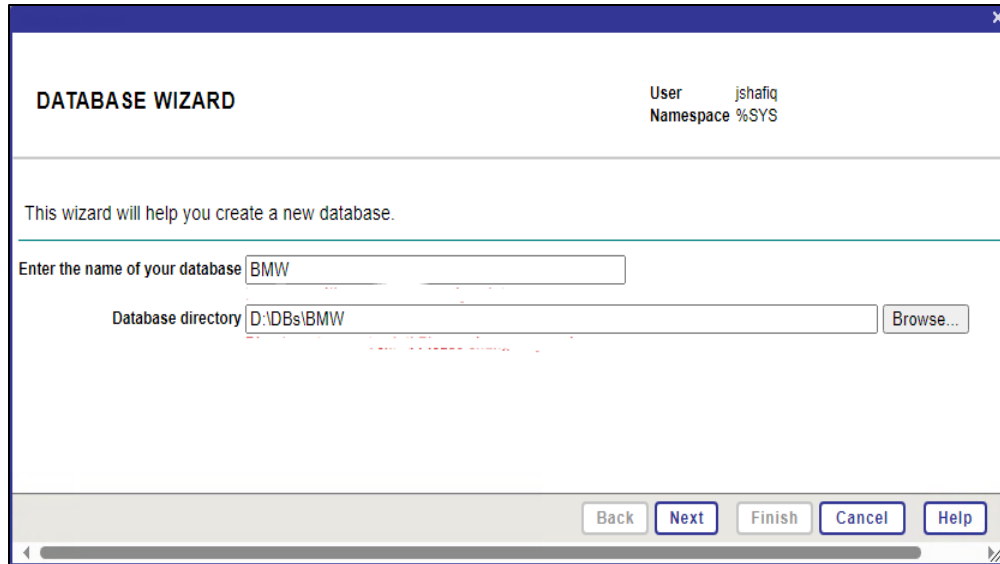


Figure 4-9: Database Wizard Create New Database

9. Click **Next** to display the **Database Wizard** (Figure 4-10). A message displays stating the IRIS.DAT database file already exists. Click **Finish** to close the **Database Wizard**.

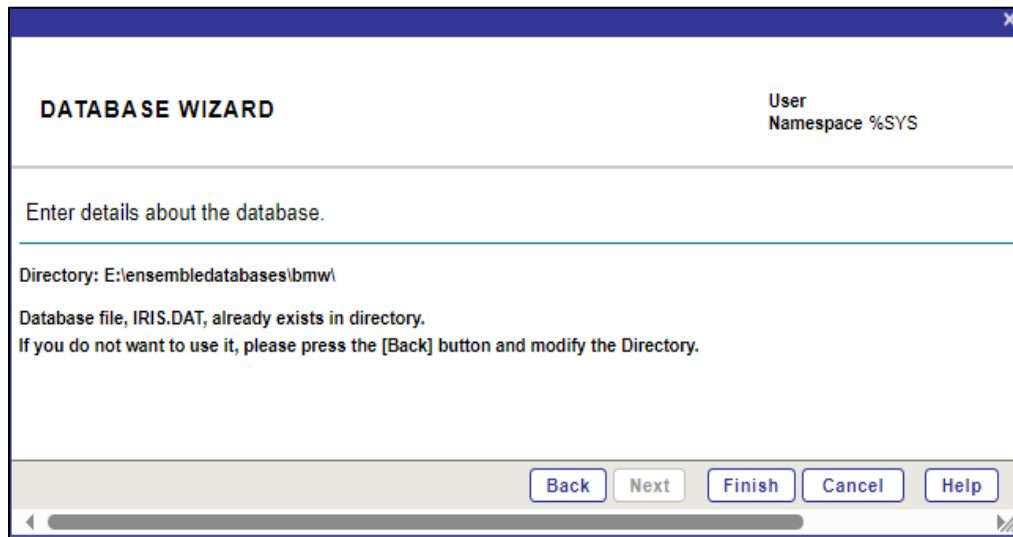


Figure 4-10: Database Wizard

4.2.7 Mount the BMW Database

To mount the BMW database:

1. From the **System Management Portal Home** window, click **System Operation > Databases** to display the **Databases** window shown in Figure 4-11.

System > Databases

Databases

Integrity Check Integrity Log Last update: 2024-10-08 20:57:26.013

To view details and to manage a local database, click the database name link from the table below:

Filter: Page size: 0 Max rows: 1000 Results: 12 Page: 1 of 1 General view Free space view

Name	Directory	Max Size (GB)	Size (MB)	Status	Encrypted	Journal
IRISSYS	c:\bit9progl\dev\programfiles\irishealth\mgr\	Unlimited	101	Mounted/RW	No	Yes
IRISLIB	c:\bit9progl\dev\programfiles\irishealth\mgr\irislib\	Unlimited	405	Mounted/RW	No	No
IRISTEMP	c:\bit9progl\dev\programfiles\irishealth\mgr\iristemp\	Unlimited	21	Mounted/RW	No	No
IRISLOCALDATA	c:\bit9progl\dev\programfiles\irishealth\mgr\irislocaldata\	Unlimited	11	Mounted/RW	No	No
IRISAUDIT	c:\bit9progl\dev\programfiles\irishealth\mgr\irisaudit\	Unlimited	11	Mounted/RW	No	Yes
BMW	c:\bit9progl\dev\programfiles\irishealth\mgr\iris\BMW\	Unlimited	4817	Unmounted	No	No
ENSLIB	c:\bit9progl\dev\programfiles\irishealth\mgr\rienslib\	Unlimited	210	Mounted/R	No	No
GLD	c:\bit9progl\dev\irisdatabases\gld\	10.339	8629	Mounted/RW	No	Yes
HSCUSTOM	c:\bit9progl\dev\programfiles\irishealth\mgr\hscustom\	Unlimited	21	Mounted/RW	No	Yes
HSLIB	c:\bit9progl\dev\programfiles\irishealth\mgr\hslib\	Unlimited	1220	Mounted/R	No	No
HSSYS	c:\bit9progl\dev\programfiles\irishealth\mgr\hssys\	Unlimited	21	Mounted/RW	No	Yes
USER	c:\bit9progl\dev\programfiles\irishealth\mgr\user\	Unlimited	1	Mounted/RW	No	Yes

Figure 4-11: System Management Portal Databases window

- If the **Status** column for the BMW database shows it is unmounted, click **BMW** to get to database details page.
- On database details page for BMW, click on **Mount** as shown in Figure 4-12.

System > Databases > Database Details

Database Details

Mount Dismount Truncate Compact Defragment Last update: 2024-10-08 20:57:26.013

GENERAL INFORMATION		DATABASE SIZE	
Directory:	c:\bit9progl\dev\programfiles\irishealth\mgr\iris\BMW\	Block Size:	8192
Resource Name:	%DB_BMWGEN	Blocks:	616576
Mounted:	No/Unmounted	Max Size:	Unlimited
Read Only:	No	Size:	4.70GB
Read Only Reason:		Expansion Size:	System Default
Encrypted:	No	Available Space:	N/A
Encryption Key ID:		% Free Space:	N/A
		Disk Free Space:	218.17GB
		Last Expansion Time:	09/25/2024 13:33:59
		Full:	No

Figure 4-12: Mount Database dialog

- The confirmation dialog shown in Figure 4-13 displays.

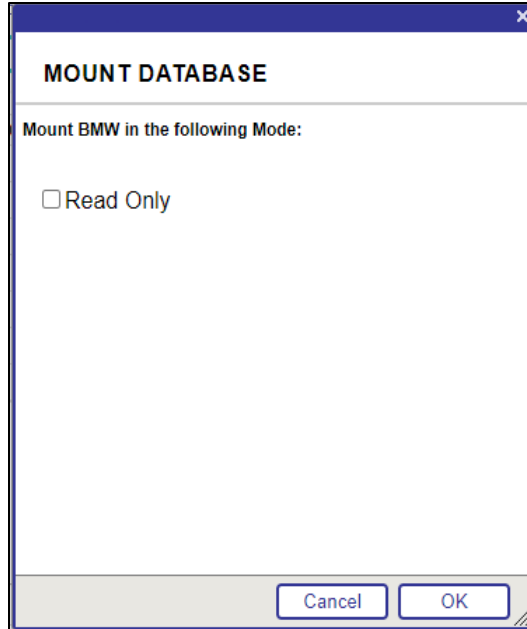


Figure 4-13: Mount Database dialog

4.2.8 Create the New Namespace

1. To create a new namespace for the BMW database, do the following:

Browse to the **New Namespace** window of the **Management Portal** following this path:

Home > System Administration > Configuration > System Configuration > Namespaces.

2. Click **Create New Namespace** at the top of the screen. The **New Namespace** window shown in Figure 4-14 displays.

Figure 4-14: Add a **New Namespace**

3. Create a new namespace, specifying **BMW** as the name of the namespace, and selecting **BMW** from the list of existing databases for Globals and Routines.
4. Clear the '**Enable namespace for interoperability productions**' check box (Figure 4-14).
5. Click **Save**.

4.2.9 Check and Remove Mirror Bit

This section checks for a mirror bit on BMW IRIS.DAT and removes it, as shown in Figure 4-15.

Having a mirror bit, on BMW IRIS.DAT, can potentially present an issue with mounting the BMW DB in Read/Write (RW) mode when installing dependent applications like BPRM and BQRE.

1. Open the IRIS terminal in programmer prompt.
2. Switch to %SYS namespace, using the command **zn "%SYS"**.
3. To get the mirroring settings, run the command **D ^MIRROR**.

4. Select **option 1** to list the mirrored databases.
5. Check if the BMW database displays in the list.
6. If it does, select **option 2** to remove the mirror bit from the BMW database.
7. If asked to provide the database name/path to remove the mirror bit, provide the database pathname as shown in Figure 4-15 in ***bold italics***

```

USER>zn "%SYS"
%SYS>d ^MIRROR

This instance is not initialized as a mirror member

1) List mirrored databases
2) Remove one or more mirrored databases
3) Enable Mirror Service

Option? 1
No mirrored db's mounted
Databases with the activation required flag set
4   f:\databases\bmw\ BMW
    133/1170064/133/1170548/0/HS2017S2016M2/d:\ensembledata\bmw\
    5AFC9AEF-E489-4ACC-86A0-91C3179A20B8
    E6F79B80-1493-4FE6-9FAC-35D9A5991188/B03E779F-FAEA-49AE-80D8-
    51C01FAC3737 Press <enter> to return to the main menu...

1) List mirrored databases
2) Remove one or more mirrored databases
3) Enable Mirror Service

Option? 2
There is one mirrored database on this system
Remove it? Yes Removing f:\databases\bmwdic\ from the mirror ...Done Press
<enter> to return to the main menu...

```

Figure 4-15: Check and remove mirror bit

4.3 Package Mapping

4.3.1 Set Up Package Mapping

To set up the package mapping:

1. Browse to the **Namespaces** window of the **Management Portal** following this path:

Home > System Administration > Configuration > System Configuration > Namespaces

A **Namespaces** window similar to Figure 4-16 displays.

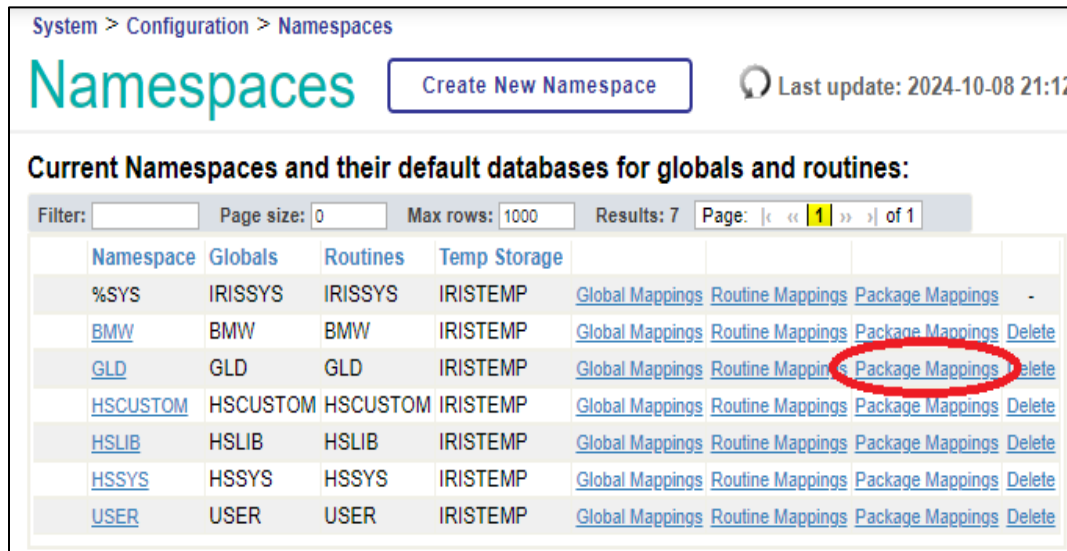


Figure 4-16: **Namespaces** window with **Package Mappings**

2. Click **Package Mappings** in the row corresponding to site’s RPMS production database. This example shows the GLD database. The Site’s database may have a different name. The **Package Mappings** window (Figure 4-17) displays.

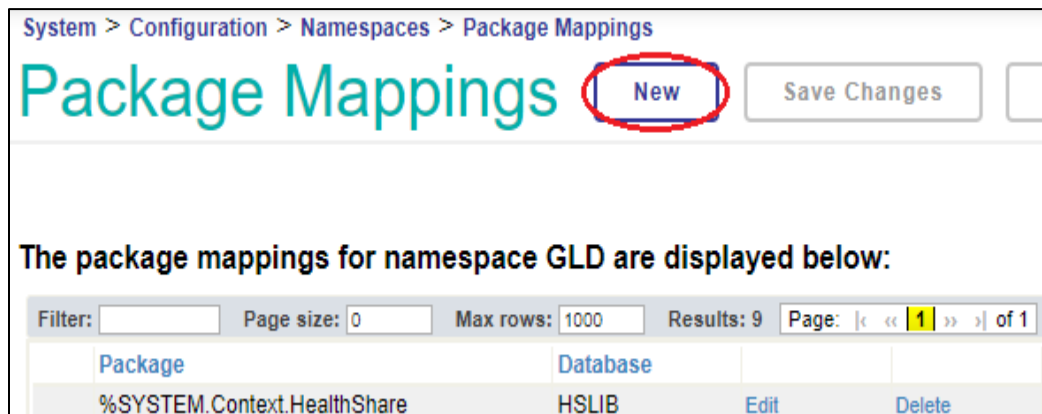


Figure 4-17: **Package Mappings** window

3. Click **New Package Mapping** to display the **Package Mapping** (Figure 4-18) dialog.

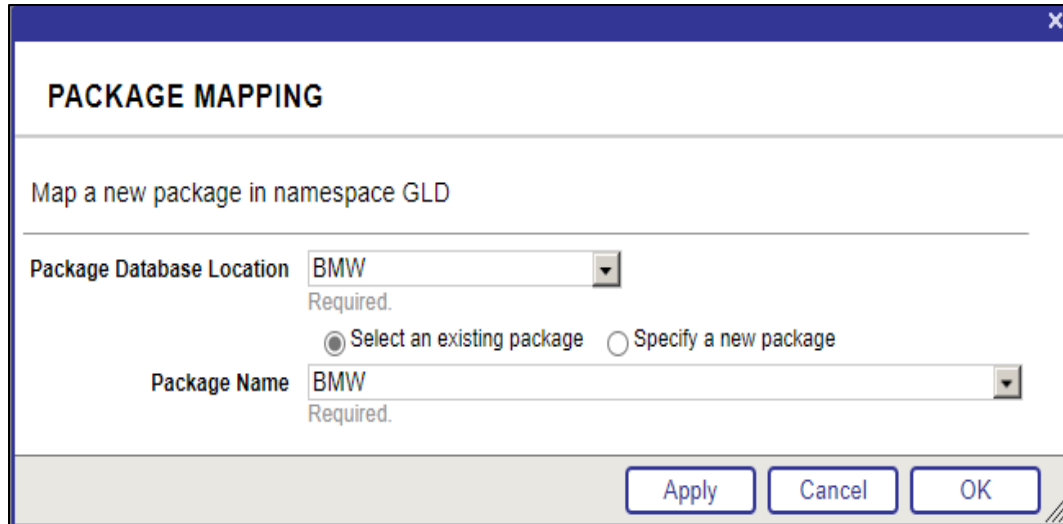


Figure 4-18: **Package Mapping** dialog

4. Type BMW in the **Package database location** field.
5. Type BMW in the **Package name** field.
6. Click **OK**; the **Package Mappings dialog** (Figure 4-19) redisplay.

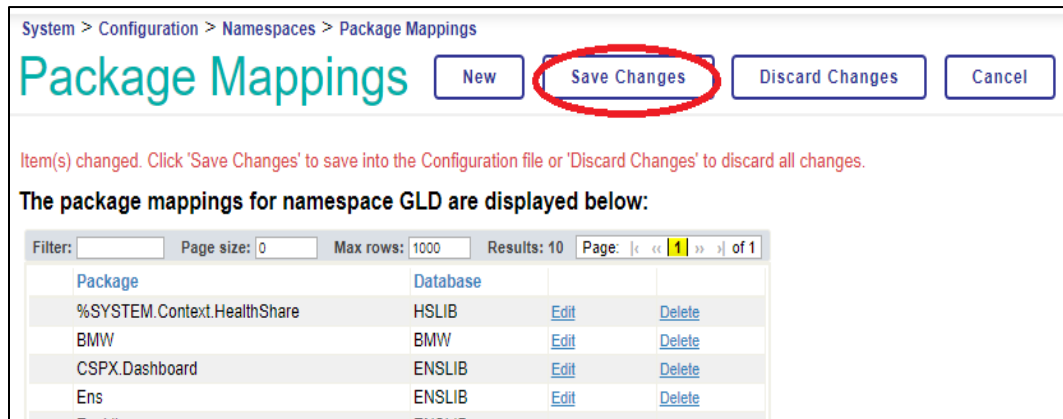


Figure 4-19: **Package Mappings** confirmation window

7. Click **Save Changes**.

4.3.2 Verify Package Mapping

To verify that the package mapping was successful and Cache classes (tables) can accurately retrieve data from FileMan files, do the following:

1. Browse to the **Execute SQL Query** window of the Ensemble System Management Portal following this path:

Home > System Explorer > SQL > Execute SQL Statements

The Execute SQL Query page (Figure 4-20) displays:

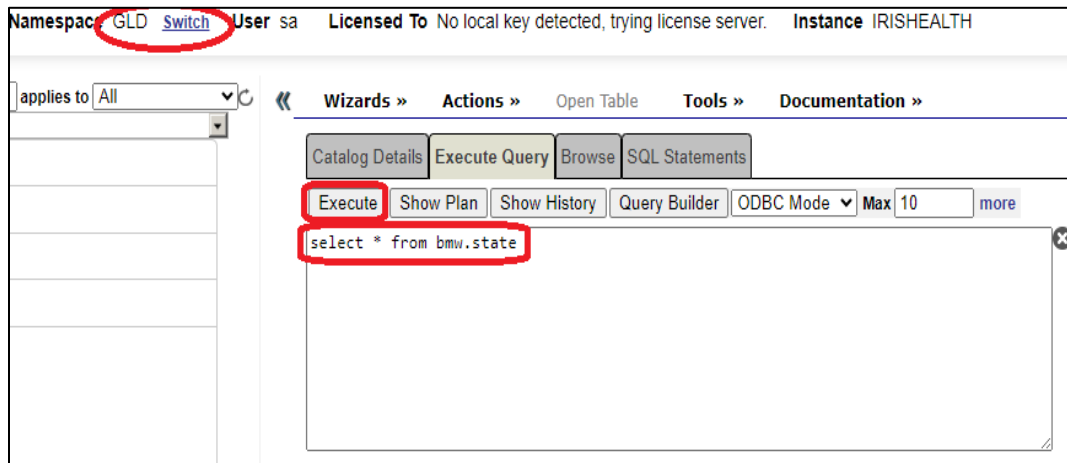


Figure 4-20: Execute SQL Query window

2. Select the site-specific namespace (**GLD** in this example) from the column on the left.
3. Type **SELECT * FROM BMW.STATE** in the edit box.
4. Click **Execute Query**. If the package mapping is successful, a listing similar to Figure 4-21 displays:

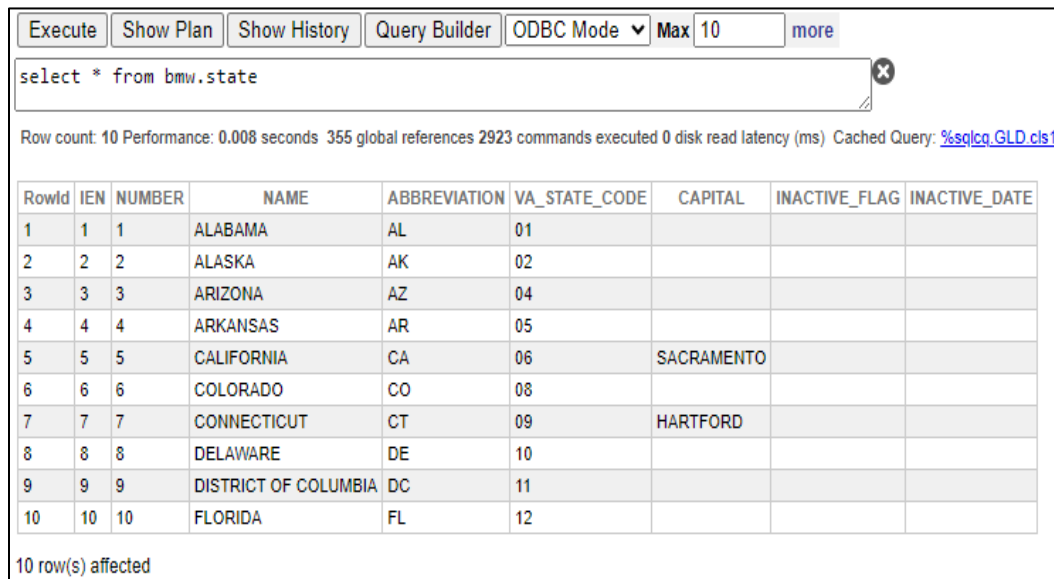


Figure 4-21: Example of test query

4.4 Global Mappings

Global mapping must be established between the BMW database and RPMS database.

To perform global mapping:

1. Browse to the **Namespaces** window of the **Ensemble Management Portal** following this path:

Home > System Administration > Configuration > System Configuration > Namespaces

A **Namespaces** window like Figure 4-22 displays.

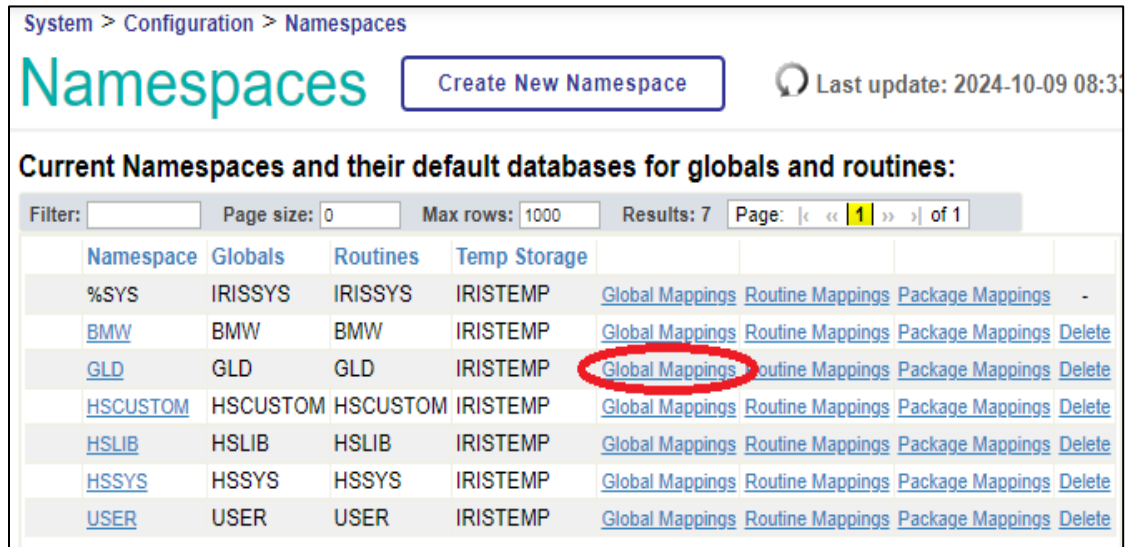


Figure 4-22: **Namespaces** window with **Global Mappings**

2. Click **Global Mappings** in the row corresponding to the RPMS production database. This example shows the GLD database, an RPMS production database. Site’s database may have a different name. The **Global Mappings** window (Figure 4-23) displays.

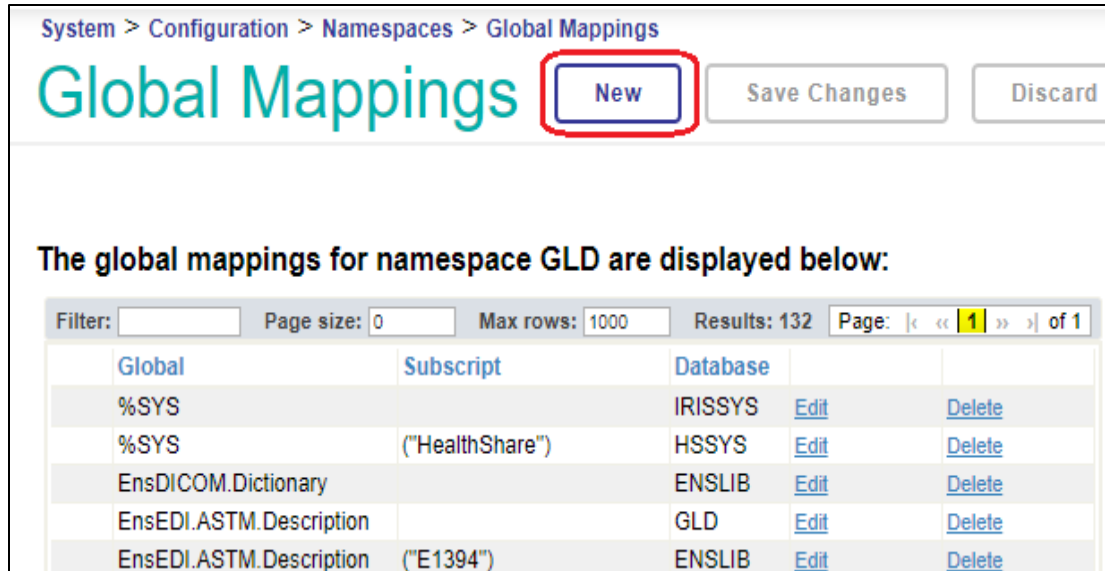


Figure 4-23: **Global Mappings** window

3. Click **New Global Mapping** to display the **Global Mappings** dialog (Figure 4-24).

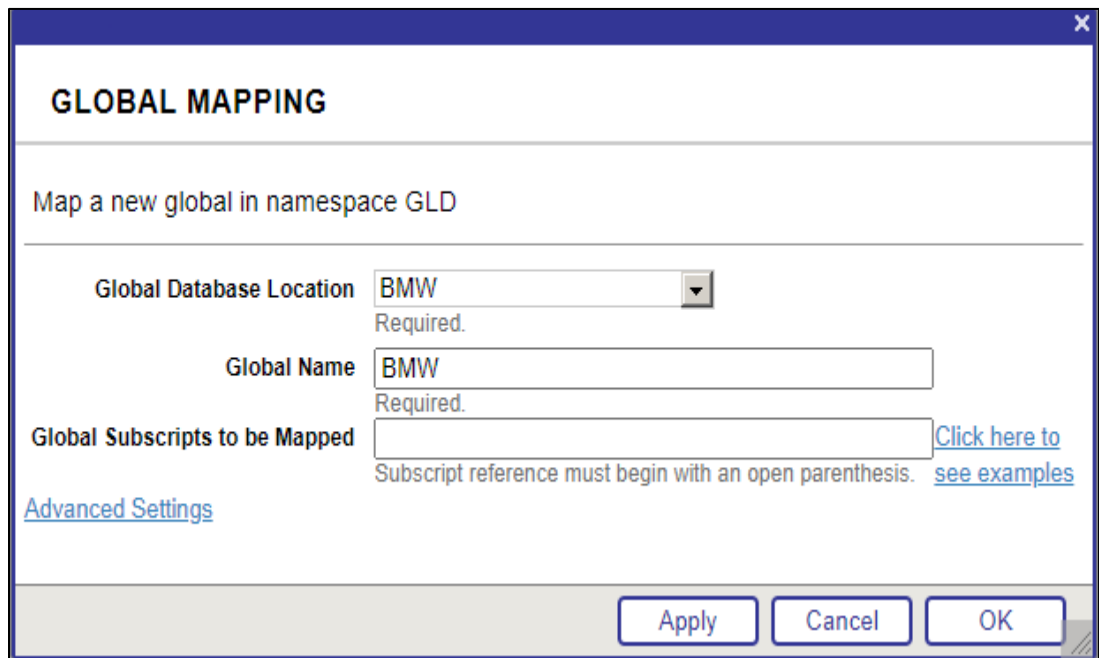


Figure 4-24: **Global Mapping** dialog

4. Select **BMW** from the **Global database location** list.
5. Type **BMW** in the **Global name** field.
6. Click **OK**. The **Global Mappings** page (Figure 4-25) redisplay.

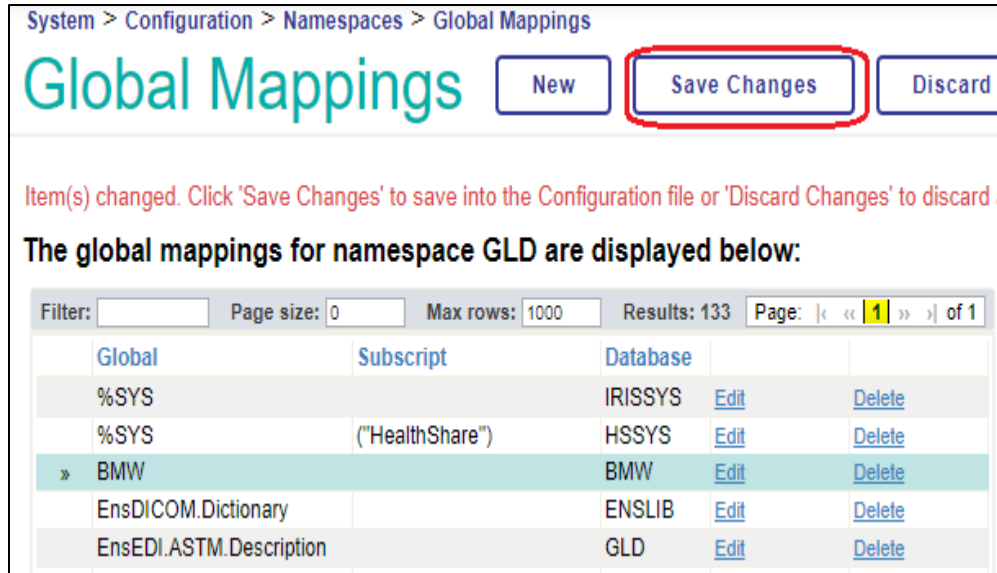


Figure 4-25: **Global Mappings** confirmation window

7. Click **Save Changes** to complete the global mapping operation.

4.5 Verify BMW Version Installed

Once installation is complete, confirm the version number of BMW that is currently installed.

1. Log into an RPMS session and go to the programmer prompt.
2. Type in the following command: **ZW ^BMW**.
3. This displays the BMW generation date and version number (Figure 4-26) that is currently installed.

```
^BMW ("GenDate")="10/01/2024 21:40:09"
^BMW ("Version")=2024.4
^BMW ("fm2class", "Version")=2.42
```

Figure 4-26: Example of the BMW version from the RPMS programmer prompt

5.0 Installing File Updates

BMW IRIS.DAT file updates are released on a periodic basis to address reported issues and to add enhancements. Follow the steps in Sections 5.1 through 5.5 to install a BMW IRIS.DAT update.

5.1 Updating the BMW IRIS.DAT File

Follow the steps in Sections 5.1.1 through 5.1.10 to import a new BMW IRIS.DAT file.

5.1.1 Acquire the Latest BMW build File

Acquire the latest **BMW IRIS.DAT** file from the IHS FTP site.

5.1.2 Unzip the BMW ZIP File

Using the appropriate software, unzip the compressed file containing the **BMW IRIS.DAT** file. Unzip this file on a workstation or on the database server. After it is unzipped, it can be moved to the appropriate location on the database server. After it has been moved, the **BMW IRIS.DAT** file can be mounted onto the IRIS server.

5.1.3 Stop the BPRM Web Site on the Application Server

If running the BPRM Practice Management Application Suite, it is necessary to stop the BPRM web site on the application server before installing a BMW patch or update.

Follow these steps:

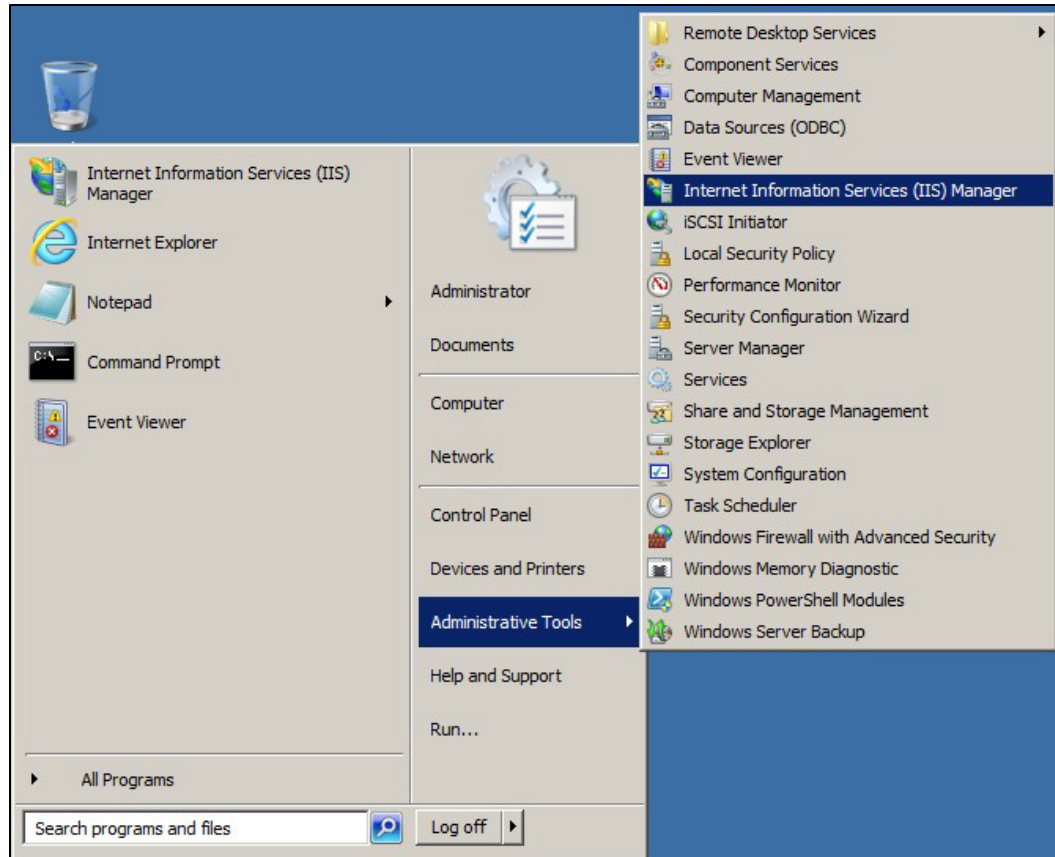


Figure 5-1: Opening **Internet Information Services (IIS) Manager**

1. Select **Internet Information Services (IIS) Manager** from the Windows Server **Administrative Tools** menu. The **Internet Information Services (IIS) Manager** window (Figure 5-2) displays.

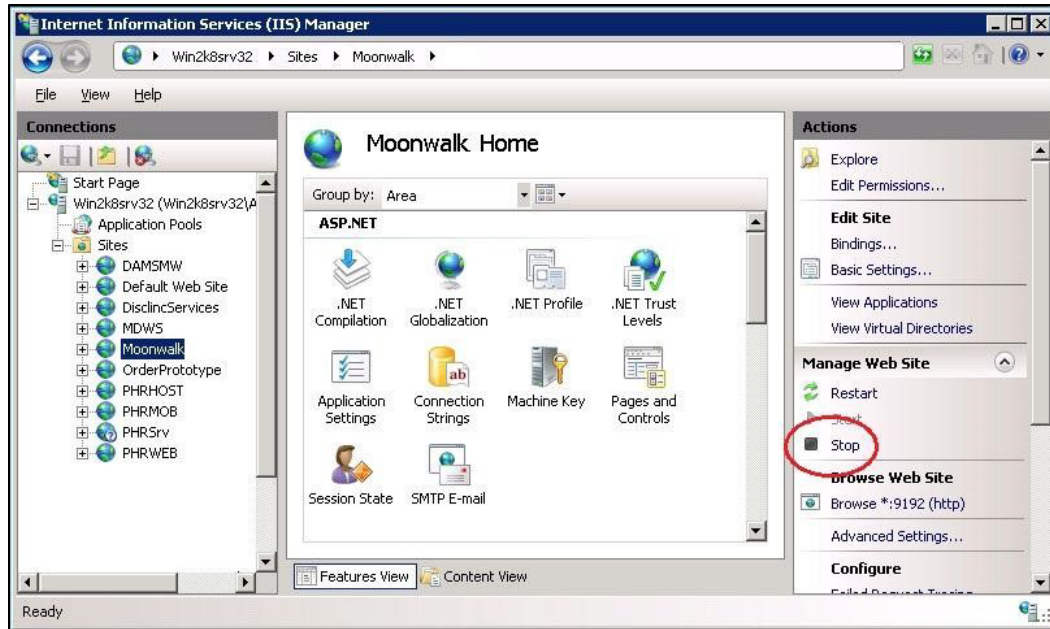


Figure 5-2: Internet Information Services (IIS) – stopping the BMW (Moonwalk) web site

2. Select the application server in the left pane (**Win2k8srv32** in the example).
3. Expand the **Sites** folder and select the **Moonwalk** site.
4. Click **Stop** in the **Manage Web Site** section in the **Actions** pane.

5.1.4 Stop CCDA Messaging

If CCDA is running, it must be stopped before updating the **BMW IRIS.DAT** file. CCDA Messaging can be stopped using the **Manage CCDA transmissions** option, available in the **CCDA Menu** (Figure 5-3). The **CCDA Menu** can be accessed from the regular “OPTION NAME” prompt in RPMS.

```
Select CCDA Menu Option: MANG Manage CCDA transmissions C Messaging
status:
No configuration problems found

CCDA processing task is running

Stop CCDA? No// Y (Yes)
Attempting to stop CCDA....CCDA stopped
```

Figure 5-3: Stopping CCDA Messaging

1. At the “Select CCDA Menu Option” prompt, type **MANG** (Manage CCDA transmissions) and press Enter.
2. If CCDA Messaging is running, type **YES** at the “Stop CCDA?” prompt.

5.1.5 Stop CCDA Production

To stop CCDA production if it is currently running:

1. Sign on to Ensemble’s **Management Portal** as an administrator. At the top center, the main page displays the server name, the current user, the current namespace, license and instance information, and a **Switch** link.

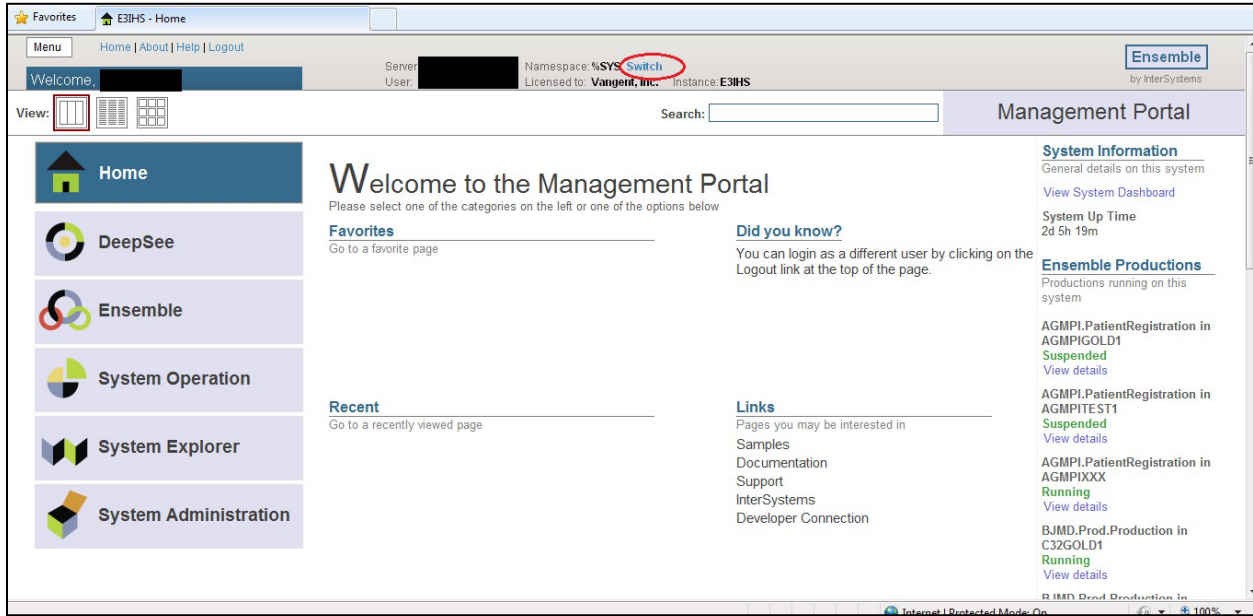


Figure 5-4: Ensemble Management Portal

2. Click the **Switch** link. The **Namespace Chooser** dialog (Figure 5-5) displays.

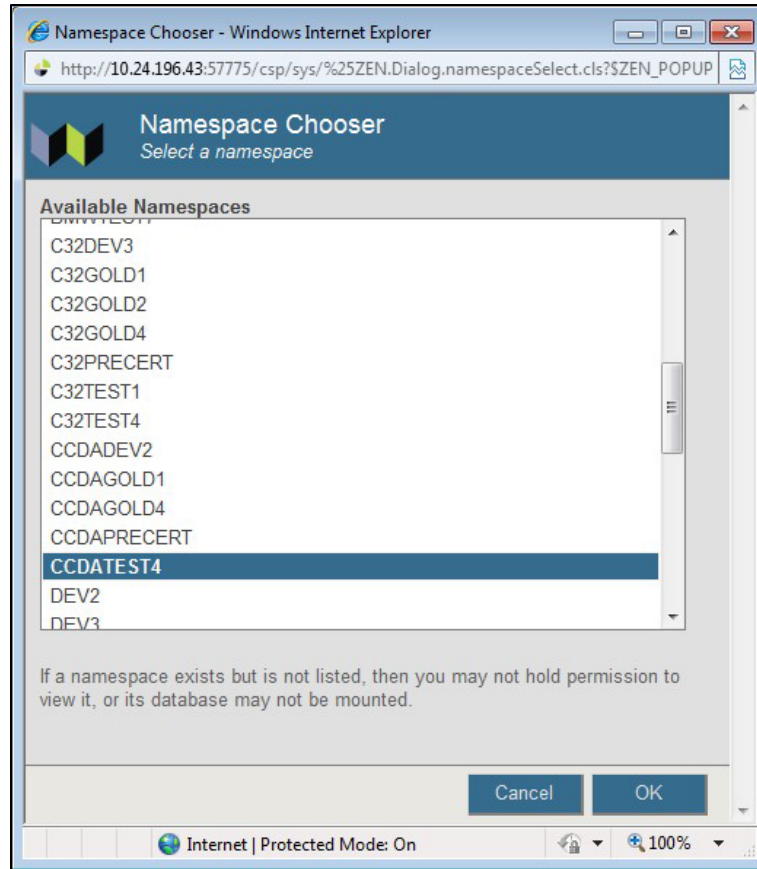


Figure 5-5: **Namespace Chooser** dialog

3. Select the appropriate CCDA namespace. The namespace consists of **CCDA** followed by the name of the RPMS namespace. In the example, the RPMS namespace is named **TEST4**, so the associated CCDA namespace is named **CCDATEST4**.
4. Click **OK** to select the namespace. The namespace displayed on the **Management Portal** page (Figure 5-6) is updated to reflect the selection.

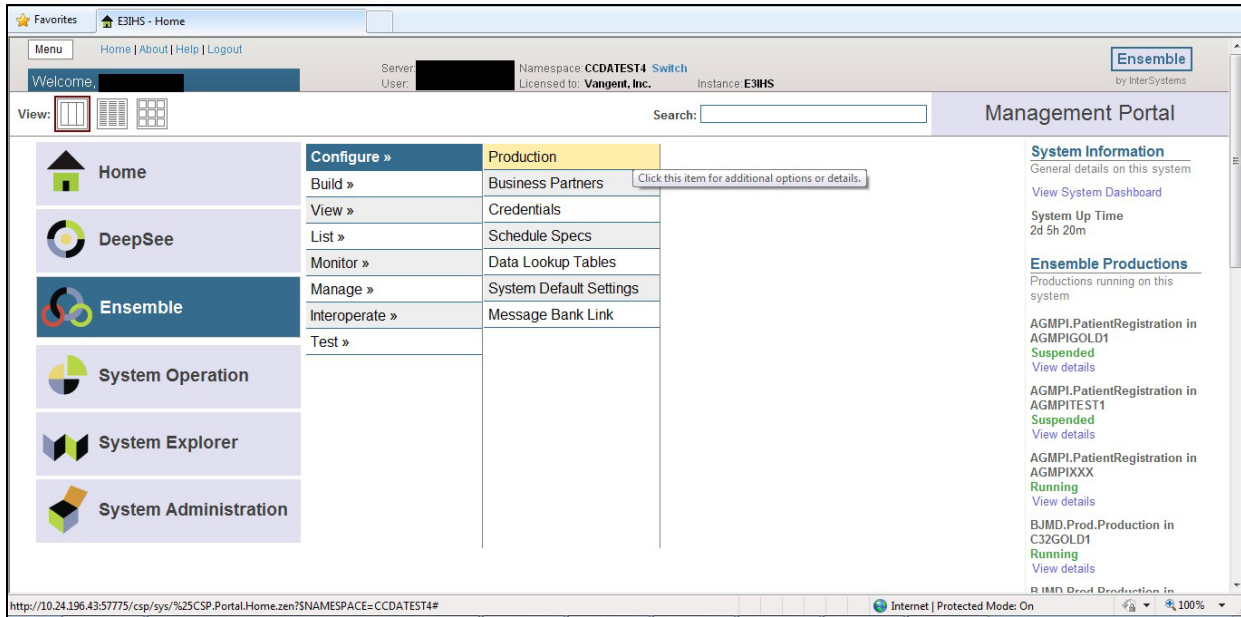


Figure 5-6: Production option in the Ensemble Management Portal

5. Select **Ensemble** in the left column.
6. Select **Configure**.
7. Select **Production**.
8. When the **View, Edit, Start, or Stop a Production** option displays, click **Go** to display the **Production Configuration** page (Figure 5-7).

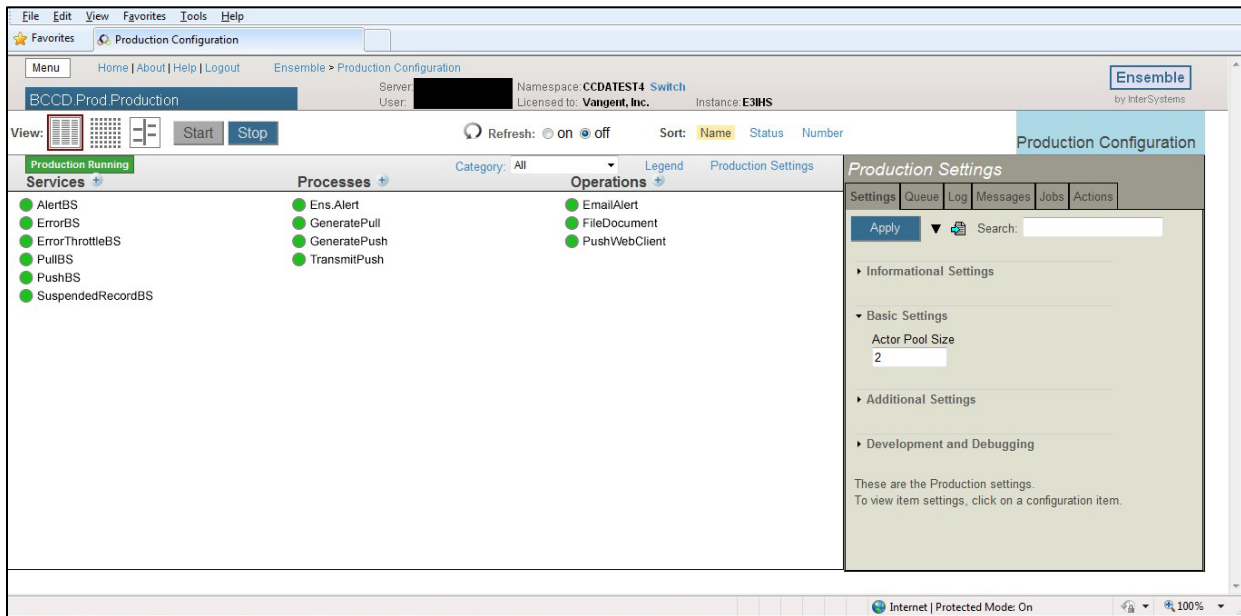


Figure 5-7: Production Configuration

9. Above the **Services** column on the left of the display, the words **Ensemble Running** will display. If the words **Ensemble Stopped** display, then the production is already stopped. Otherwise, click **Stop**. The **Stop Production** dialog (Figure 5-8) displays.

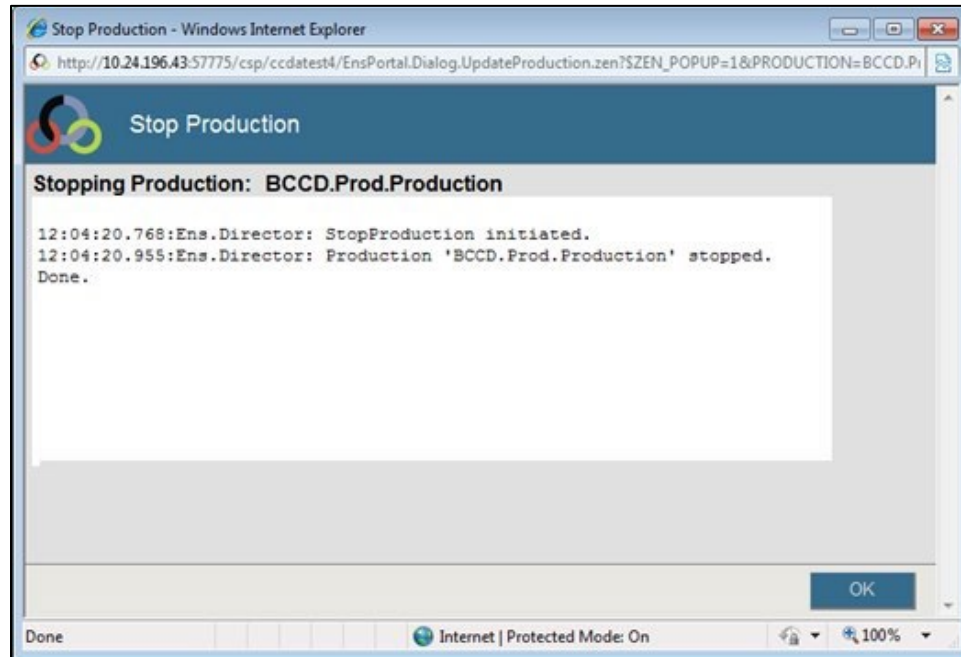


Figure 5-8: **Stop Production** dialog

It might take production a few seconds to stop. When it stops, the message **Production 'BCCD.Prod.Production' stopped** displays, followed by the message **Done**. There might be additional messages on this screen if it takes Ensemble more than a few seconds to stop all associated processes.

10. Click **OK** to return to the **Production Configuration** screen.

5.1.6 Stop BQRE Extract

Make sure there is no BQRE extract in process during the install/update of BMW.

5.1.7 BUSA Reports

BUSA reports may not display data during install/update of BMW. It does not, however, affect the auditing part of BUSA.

5.1.8 Dismount the BMW Database on the Database Server

1. From the Ensemble/Cache **System Management Portal Home** window, click **System Operation > Databases** to display the **Databases** window (Figure 5-9).

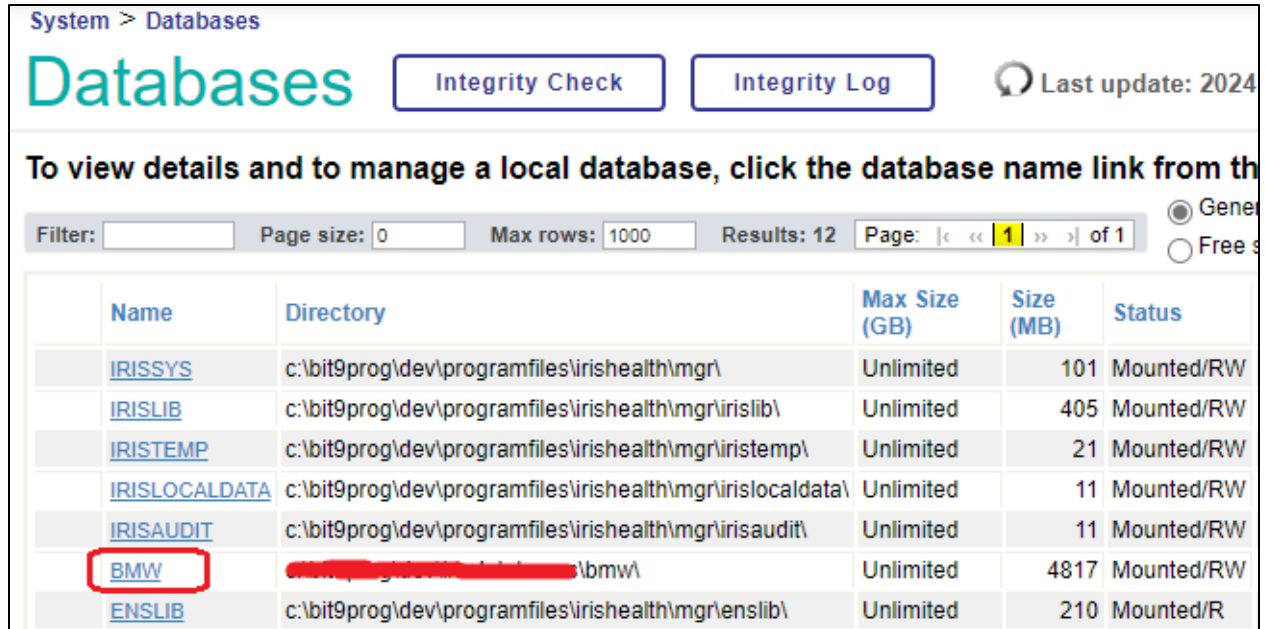


Figure 5-9: Database List Dismounting the BMW database

2. Click **BMW** to get to database details page
3. On database details page for **BMW**, click on **Dismount** as show in Figure 5-10 and click **Yes** if a confirmation is asked

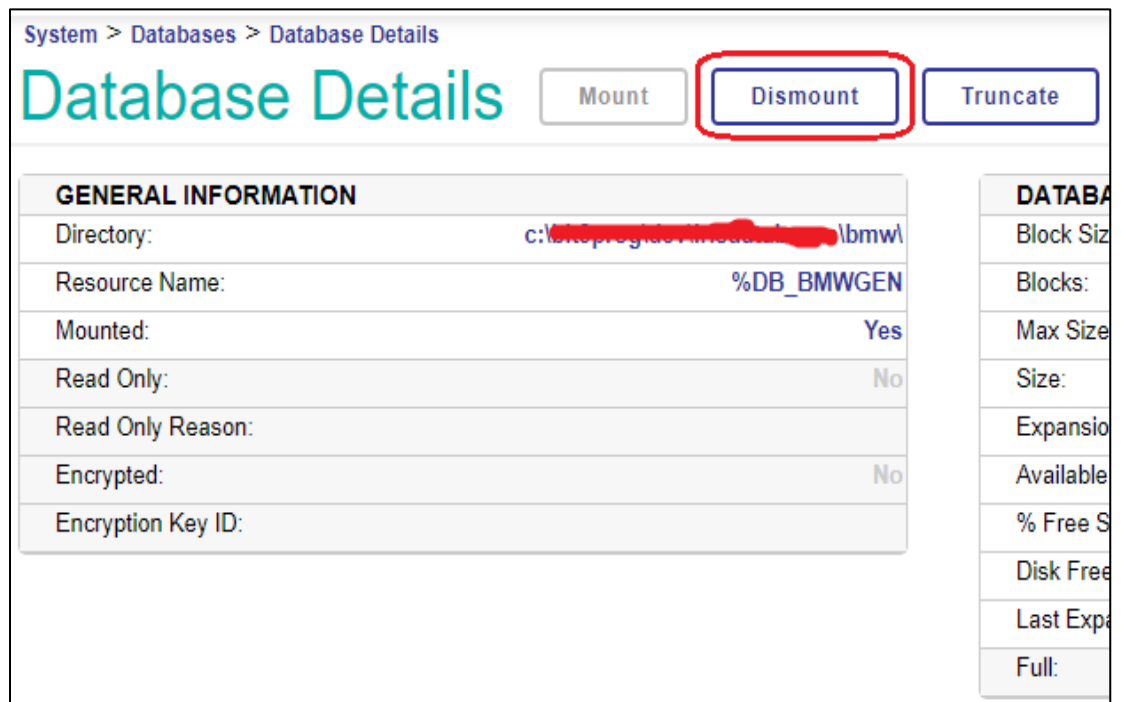


Figure 5-10: Dismounting the BMW database

5.1.9 Move the New IRIS.DAT File

After unzipping the compressed file as described in Section 5.1.2, move the **IRIS.DAT** file contained within it to the **/BMW** folder where earlier versions of the file have been stored. If installing on a Windows database server, this file move can be done directly through the network or via Remote Desktop Connection, depending on site requirements. On an AIX database server, it may be necessary to use FTP or a similar file transfer program to move the file.

File permissions may need to be set for the new IRIS.DAT file on an AIX system. See Section 4.2.5 for the steps to do so.

5.1.10 Mount the BMW Database

To mount the BMW database:

1. From the Ensemble/Cache **System Management Portal Home** window, click **System Operation > Databases**. A **Databases** window similar to Figure 5-11 displays.

To view details and to manage a local database, click the database name link from the table below:

Name	Directory	Max Size (GB)	Size (MB)	Status	Encrypted	Journal
IRISYS	c:\bit9prog\dev\programfiles\irishealth\mgr\	Unlimited	101	Mounted/RW	No	Yes
IRISLIB	c:\bit9prog\dev\programfiles\irishealth\mgr\irislib\	Unlimited	405	Mounted/RW	No	No
IRISTEMP	c:\bit9prog\dev\programfiles\irishealth\mgr\iristemp\	Unlimited	21	Mounted/RW	No	No
IRISLOCALDATA	c:\bit9prog\dev\programfiles\irishealth\mgr\irislocaldata\	Unlimited	11	Mounted/RW	No	No
IRISAUDIT	c:\bit9prog\dev\programfiles\irishealth\mgr\irisaudit\	Unlimited	11	Mounted/RW	No	Yes
BMW	C:\Program Files\Ensemble\BMW\	Unlimited	4817	Unmounted	No	No
ENSLIB	c:\bit9prog\dev\programfiles\irishealth\mgr\enslib\	Unlimited	210	Mounted/R	No	No
GLD	c:\bit9prog\dev\irisdatabases\gld\	10.339	8629	Mounted/RW	No	Yes
HSCUSTOM	c:\bit9prog\dev\programfiles\irishealth\mgr\hscustom\	Unlimited	21	Mounted/RW	No	Yes
HSLIB	c:\bit9prog\dev\programfiles\irishealth\mgr\hslib\	Unlimited	1220	Mounted/R	No	No
HSSYS	c:\bit9prog\dev\programfiles\irishealth\mgr\hssys\	Unlimited	21	Mounted/RW	No	Yes
USER	c:\bit9prog\dev\programfiles\irishealth\mgr\user\	Unlimited	1	Mounted/RW	No	Yes

Figure 5-11: **System Management Portal Databases** window

2. If the Status column for the BMW database displays Unmounted, click **BMW** to get to database details as shown in Figure 5-12.

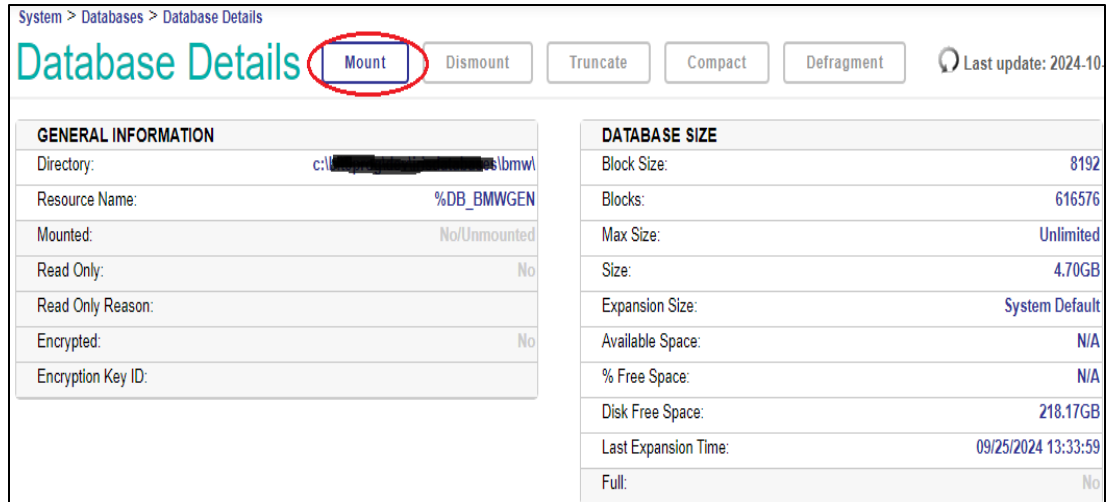


Figure 5-12: Database Details dialog

3. Click **OK** on confirmation dialog as shown in Figure 5-13.

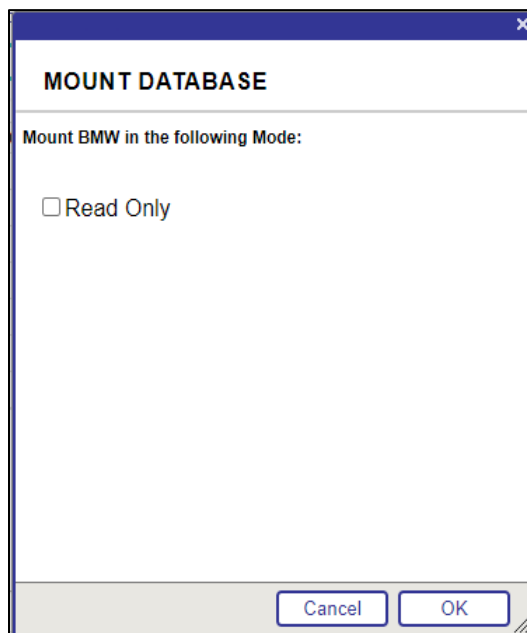


Figure 5-13: Mount database confirmation dialog

5.2 Purge the Previous SQL Queries

To clear any previous SQL queries for your RPMS database:

1. From the Ensemble/Cache **System Management Portal Home** window, click **System Explorer > SQL**. The Schemas page (Figure 5-14) displays.

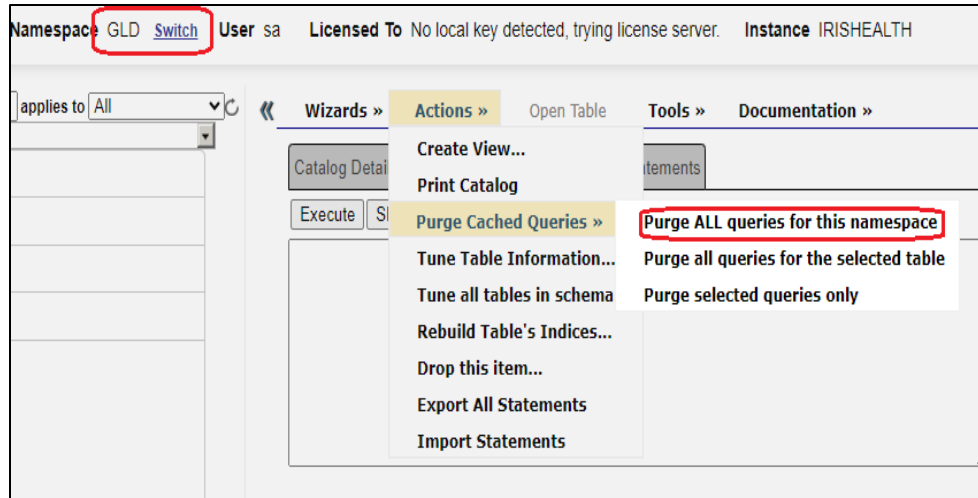


Figure 5-14: Purge Queries – IRIS systems

2. Select the RPMS namespace. In the example shown, **GLD** is selected. Your database will likely have a different name.
3. Click **Purge ALL Queries for this namespace**.

5.3 Re-import BPRM XML

BPRM xml code files, when imported, physically reside in BMW database. The BMW database does not come with any module-dependent XML code files. The BPRM xml import file that is associated with BPRM version that is running at the site should be re-imported after updating BMW database. Please do refer to relevant BPRM install manual import/install xml section.

5.4 Start the BPRM Web Site on the Application Server

If running the BPRM Practice Management Application Suite, restart the BPRM web site. Follow the steps outlined in Section 5.1.3, but select the **Start** option in Step 2.

5.5 Re-import BQRE XML

BQRE xml code files, when imported, physically reside in the BMW database. The BMW database does not come with any module-dependent XML code files. The BQRE xml import file that is associated with the BQRE version that is running at the site should be re-imported after updating the BMW database. Please refer to the Manual Import/Install XML section of the *BQRE Installation Manual*.

5.6 Start CCDA Messaging

If CCDA was previously running, restart it by following the steps outlined in Step 2 of Section 5.1.3 and typing YES at the “Start CCDA?” prompt as shown in Figure 5-15:

```
Select CCDA Menu Option: MANG Manage CCDA transmissions CCDA status:
No configuration problems found

CCDA processing task is not running

Start CCDA? No// YES (Yes)
Attempting to start CCDA (JUL 16, 2013@16:09:54)..CCDA started
```

Figure 5-15: Starting CCDA messaging

5.7 Starting CCDA Production

When CCDA messaging is started via the **Manage CCDA Transmissions** option, the CCDA production will start automatically within two minutes.

5.8 Verify BMW Version Installed

Once the installation is complete, confirm the version number of BMW that is currently installed.

1. Log into an RPMS session and go to the programmer prompt.
2. Type in the following command: **ZW ^BMW**.
3. This will display the BMW generation date and version number (Figure 5-16) that is currently installed.

```
^BMW("GenDate")="07/26/2023 14:01:50"
^BMW("Version")=2023.4
^BMW("fm2class","Version")=2.39
```

Figure 5-16: Example of BMW version from RPMS programmer prompt

5.9 Enable/Start Dependent Applications

BQRE extracts can be resumed.

BUSA reports shall display data.

Acronym List

Acronym	Term Definition
BMW	RPMS/Ensemble Cache Classes Database File
FTP	File Transfer Protocol
IHS	Indian Health Service
OIT	Office of Information Technology (IHS)
RPMS	Resource and Patient Management System
SQA	Software Quality Assurance (OIT)

Contact Information

If you have any questions or comments regarding this distribution, please contact the IHS IT Service Desk.

Phone: (888) 830-7280 (toll free)

Web: <https://www.ihs.gov/itsupport/>

Email: itsupport@ihs.gov