



RESOURCE AND PATIENT MANAGEMENT SYSTEM

# **Clinical Reporting System**

(BGP)

## **Installation Guide and Release Notes**

Version 24.1  
August 2024

Office of Information Technology  
Division of Information Technology

# Table of Contents

<b>1.0</b>	<b>Release Notes</b> .....	<b>1</b>
1.1	Key Changes in v24.1 .....	1
1.1.1	Logic Changes to National GPRA/GPRAMA Report Measures .....	1
1.1.2	Key Logic Changes to Non-GPRA Measures .....	2
1.1.3	Additional Key Enhancements and Revisions .....	2
1.1.4	Feature Numbers Included in Release .....	2
<b>2.0</b>	<b>Installation Notes</b> .....	<b>4</b>
2.1	CRS Distribution Contents and Required Resources .....	4
2.2	Contents of Distribution .....	4
2.2.1	Required Resources .....	4
2.3	Visual CRS (GUI) Distribution Contents and Required Resources .....	5
2.3.1	Contents of GUI CRS Distribution .....	5
2.3.2	Required Resources for GUI CRS .....	5
2.4	Before You Begin: Installation Issues .....	5
<b>3.0</b>	<b>Installation Instructions</b> .....	<b>7</b>
3.1	Installation of the CRS GUI .....	8
3.1.1	Installation on the RPMS Server .....	8
3.1.2	Installation on Each User's (Client) PC .....	8
<b>4.0</b>	<b>Sample Installations</b> .....	<b>10</b>
4.1	Sample Installation of CRS on RPMS Server .....	10
4.2	Sample Installation of the CRS GUI .....	17
<b>5.0</b>	<b>Installation Configuration</b> .....	<b>21</b>
	<b>Acronym List</b> .....	<b>22</b>
	<b>Contact Information</b> .....	<b>23</b>

## Preface

The Government Performance and Results Act (GPRA) requires federal agencies to report annually on how the agency measured against the performance targets set in its annual plan. The Indian Health Service (IHS) GPRA measures include clinical prevention and treatment, quality of care, infrastructure, and administrative efficiency functions.

The IHS Clinical Reporting System (CRS) is a Resource and Patient Management System (RPMS) software application designed for national reporting, as well as Area Office and local monitoring of clinical GPRA and developmental measures. CRS was first released for FY 2002 performance measures (as GPRA+) and is based on a design by the Aberdeen Area Office (GPRA2000).

This manual provides installation instructions for CRS v24.1. V24.1 adds fiscal year (FY) 2024 clinical performance measures to existing FY 2002 through FY 2023 measures.

CRS is the reporting tool used by the IHS Office of Planning and Evaluation to collect and report clinical performance results annually to the Department of Health and Human Services and to Congress.

Each year, an updated version of CRS software is released to reflect changes in the logic descriptions of the different denominators and numerators. Additional performance measures may also be added. Local facilities can run reports as often as desired and can also use CRS to transmit data to their Area Office. The Area Office can use CRS to produce an aggregated Area Office report for either annual GPRA or Area Office director performance reports.

CRS produces reports on demand from local RPMS databases for both GPRA and developmental clinical performance measures that are based on RPMS data, thus eliminating the need for manual chart audits for evaluating and reporting clinical measures.

To produce reports with comparable data across every facility, the GPRA measures definitions were translated into programming code with the assistance of clinical subject matter experts. CRS uses predefined taxonomies to find data items in the RPMS Patient Care Component to determine if a patient meets the performance measure criteria. Taxonomies contain groups of codes (e.g., diagnoses or procedures) or site-specific terms. Each performance measure topic has one or more defined denominators and numerators.

Administrative and clinical users can review individual or all measures at any time to:

- Identify potential data issues in their RPMS, for example, missing or incorrect data.
- Monitor their site's performance against past national performance and upcoming agency goals.
- Identify specific areas where the facility is not meeting the measure to initiate business-process or other changes.
- Quickly measure the impact of process changes on performance measures.
- Identify IHS Area Offices meeting or exceeding measures to provide lessons learned.

RPMS CRS Users include:

- Area Office and site quality improvement staff.
- Compliance officers.
- GPRA coordinators.
- Clinical staff, such as physicians, nurses, nurse practitioners, and other providers.
- Area Office directors.
- Any staff involved with quality assurance initiatives.
- Staff who run the various CRS reports.

## 1.0 Release Notes

This manual provides user instructions on installing v24.1 of the Clinical Reporting System (CRS). The manual provides installation instructions for both the RPMS server-side software and the Visual CRS graphical user interface (GUI).

### 1.1 Key Changes in v24.1

#### 1.1.1 Logic Changes to National GPRA/GPRAMA Report Measures

- GPRA Developmental Measures:
  - Added the following GPRA Developmental topics:
    - Colorectal Cancer Screening
    - Screening for Substance Use (added measures)
  - Updated codes and/or logic in the following topics: Access to Dental Service; Caries Risk Assessment; Adolescent Immunizations; Cancer Screening: Mammogram Rates; Screening for Substance Use; Substance Use Disorder (SUD) in Women of Childbearing Age; Suicide Risk Assessment; Weight Assessment and Counseling for Nutrition and Physical Activity; HIV Screening; HIV Quality of Care; Hepatitis C Screening; Chlamydia Testing; Proportion of Days Covered by Medication Therapy; Concurrent Use of Opioids and Benzodiazepines.
- Statin Therapy to Reduce Cardiovascular Disease Risk in Patients with Diabetes:
  - Removed measure with Active Diabetic Denominator.
  - Updated age range for patients with LDL-C greater than or equal to ( $\geq$ ) 190 mg/dL or diagnosis of familial hypercholesterolemia to 20 through 75.
  - Added patients ages 40 through 75 with a 10-year ASCVD risk score of greater than or equal to ( $\geq$ ) 20% to the denominator.
- Diabetic Retinopathy:
  - Added HCPCS M1220, M1221 to Diabetic Retinal Exam definition.
  - Added LOINC code 103616-9 to BGP CREATININE LOINC CODES.
- Cervical Cancer Screening:
  - Added CPT 0429U to HPV DNA definition.
  - Added LOINC codes 104170-6, 104132-6 to BGP HPV LOINC CODES.
  - Added LOINC code 104132-6 to BGP HPV PRIMARY LOINC CODES.
- Cancer Screening: Mammogram Rates:

- Added HCPCS M1280 to bilateral mastectomy definition.
- Colorectal Cancer Screening:
  - Added HCPCS M1295 to total colectomy definition.
- Alcohol Screening:
  - Added CAGE-AID and TAPS-Alcohol Health Factors to alcohol screening and positive screen definitions.
- Screening, Brief Intervention, and Referral to Treatment (SBIRT):
  - Added CAGE-AID and TAPS-Alcohol Health Factors to alcohol screening and positive screen definitions.
- Depression Screening:
  - Removed PHQ2 from depression screening definition.
  - Added Edinburgh Postnatal Depression Scale (EPDS) to depression screening definition.
- Statin Therapy for the Prevention and Treatment of Cardiovascular Disease:
  - Removed measure with Active Diabetic Denominator.
  - Updated age range for patients with LDL-C greater than or equal to ( $\geq$ ) 190 mg/dL or diagnosis of familial hypercholesterolemia to 20 through 75.
  - Added patients ages 40 through 75 with a 10-year ASCVD risk score of greater than or equal to ( $\geq$ ) 20% to the denominator.

### 1.1.2 Key Logic Changes to Non-GPRA Measures

For key logic changes to non-GPRA measures, please refer to the *CRS 2024 (Version 24.1) Selected Measures Report Performance Measure List and Definitions* document located on the CRS website:

<https://www.ihs.gov/crs/software/fy24/>

### 1.1.3 Additional Key Enhancements and Revisions

- None.

### 1.1.4 Feature Numbers Included in Release

- 99178–Remove PHQ2 from Depression Screen logic
- 102778–Addition of new fields to GPRA existing measures
- 108374–Copy CRS files to v24.1 and update menus
- 108375–Update Export files

- 108376–Update Summaries
- 108378–Update Lab/Medication Taxonomies
- 108380–Update Manuals
- 108381–GUI-Add new version + testing and Help file
- 108383–Add ICD-10 codes to Dental Measures
- 108388–GUI-Update report naming convention
- 108395–Suicide Risk Assessment-update age range
- 108396–Adolescent IZ-new meningococcal codes
- 108397–Statin Therapy measure updates (DM and CVD)
- 108401–Add EPDS to Depression Screening Logic
- 108402–DM Statin Therapy-Remove AD denominator
- 108404–Counseling/Patient Education-Nutrition CPT code removal
- 108655–Screening for Substance Use
- 108656–Substance Use Disorder (SUD) in Women of Childbearing Age
- 108657–2024 Code Updates
- 108673–Hospice definition update
- 108679–Updates to Substance Use topic
- 109457–Colorectal Cancer Screening-GPRA Dev measure with new age range

## 2.0 Installation Notes

**Note:** Read the entire Notes file prior to attempting any installation.

**Prefix:** BGP

**Current Version:** 24.1

**Note:** This distribution of the CRS contains v24.1 of CRS and the GUI front end to the CRS system. The server-side (i.e., “roll-and-scroll” or backend) v24.1 of the package can be installed alone or with both the GUI and the server-side versions. Currently, there is no requirement to install the GUI.

Please install v24.1 of CRS (bgp\_2410.k) at all sites regardless of whether the site opts to install and use the GUI portion of the package. V24.1 of CRS and the GUI have different requirements; please take note of the requirements section for each piece of the software.

### 2.1 CRS Distribution Contents and Required Resources

### 2.2 Contents of Distribution

Table 2-1: Contents of Distribution

File	Description
bgp_2410.k	Kernel Installation and Distribution System (KIDS) file containing software
bgp_241i.pdf	Installation guide in PDF format (this manual)
bgp_241t.pdf	Technical Manual in PDF format
bgp_241u.pdf	User Manual in PDF format
bgp_241u_visual.pdf	Visual CRS User Manual in PDF format
bgp_2410client.zip	Visual CRS software for Client’s PC

#### 2.2.1 Required Resources

- Kernel v8.0 p1018 (XU\*8.0\*1018) or later.
- FileMan v22.0 p1018 (DI\*22.0\*1018) or later.



- Taxonomy v5.1 p54 or later must be installed (atx\_0510.54k, atx\*5.1\*54).
- IHS Clinical Reporting System v24.0 must be installed (bgp\_2400.k).

## 2.3 Visual CRS (GUI) Distribution Contents and Required Resources

### 2.3.1 Contents of GUI CRS Distribution

- bgp\_2410client.zip.

The following two files are contained in the zip file:

- bgp\_2410setup.exe.
- bgp\_2410.msi.

### 2.3.2 Required Resources for GUI CRS

Additional requirements for installing and using Visual CRS on a client's PC:

- On the RPMS Server:
  - BMX v4.0.
  - IHS Clinical Reporting System v24.0.
- On the Client (User's) PC:
  - Windows XP Service Pack 3 or higher.
  - Microsoft Office 2003 or later.
  - .NET Framework v4.0.

**Note:** If the CRS GUI will not be installed, ignore these requirements.

If the .NET Framework v4.0 is not installed, it will automatically be downloaded and installed when the client installation is started.

## 2.4 Before You Begin: Installation Issues

1. Make a copy of this distribution for offline storage.
2. Print all notes/readme files.
3. Create a printed audit trail in case there are any problems with the installation.

To capture terminal output during the installation, use an auxport printer attached to the terminal on which the installation is being performed.

### 3.0 Installation Instructions

**Note:** This installation is a KIDS install. For any questions on how to do a KIDS installation, please contact your Area Office information systems support personnel.

In all UCIs running the IHS CRS:

1. Ensure that users are unable to use the CRS for the duration of this installation.
2. Save all routines (^%RO (CACHE) in the BGPD\* namespace for use in returning to the prior existing version, if needed.

**Note:** If no problems are noted with the new installation, remove saved routines from your system seven to ten days after this install.

3. Install **bgp\_2410.k**. This is the KIDS file for the IHS CRS:
  - a. Load the distribution into KIDS using **Option 1** on the **KIDS Installation menu**. The distribution was released in a file named **bgp\_2410.k**.
  - b. Verify the load using **Option 2** on the **KIDS Installation** menu.
  - c. Consider using **Options 3** and **4** on the **KIDS Installation** menu to print and compare the Transport global.
  - d. Install the distribution using **Option 6** on the **Installation** menu.
  - e. To see results, use the **KIDS Install File Print** option to view/print the IHS CLINICAL REPORTING v24.1 entry.

**Note:** For assistance with a KIDS install, call the Area Office support personnel.

4. After the install completes, assign security keys, as appropriate, using Table 3-1.

Table 3-1: Assigning security keys

Name	Descriptive Name	Description
BGPZAREA	BGP Area Report	This key unlocks the Area Office report options on the main BGPMENU. <b>Note:</b> This key should be assigned <i>only</i> at the Area Office level.
BGPZMENU	BGP Main Menu–CRS	This key unlocks the main CRS menu. It should be assigned to all users who need to run GPRA/CRS reports.

Name	Descriptive Name	Description
BGPZ PATIENT LISTS	BGP Patient Lists	This key allows the holder to obtain patient lists. The patient lists contain sensitive patient/clinical information. This key should be given <i>only</i> to those users who have a need for such information.
BGPZ SITE PARAMETERS	BGP Site Parameters	This key should be given to those with authority to update the site parameters.
BGPZ TAXONOMY EDIT	BGP Taxonomy Edit	This key should be given <i>only</i> to users who will need to update taxonomies.

## 3.1 Installation of the CRS GUI

There are two parts to the CRS GUI install: installation on the RPMS server and installation on the local (client) PC. See the steps below for installation instructions.

### 3.1.1 Installation on the RPMS Server

1. Make sure BMX v4.0 is installed in RPMS on the RPMS Server.
2. Make sure CRS v24.1 is installed in RPMS on the RPMS server. (See instructions above.)

**Note:** If a previous version of Visual CRS is being used you will not need to perform Steps 3 and 4. If this is the first time Visual CRS is being used, perform Steps 3 and 4.

3. Assign option **BGPGRPC** as a secondary menu option with a synonym of **BGPG** for each user.
4. Assign option **BMXRPC** as a secondary menu option with a synonym of **BMX** for each user.

### 3.1.2 Installation on Each User's (Client) PC

1. Place **bgp\_2410client.zip** into a directory of your choice and unzip the file. There are two files included in the zip file: **bgp\_2410.msi** and **bgp\_2410setup.exe**.
2. Double-click the **bgp\_2410setup.exe** file that was distributed with Visual CRS. If asked, accept the License Agreement, and follow the instructions for downloading and installing Microsoft .Net Framework v4.0. This will only occur if the most current version of Microsoft.Net Framework v4.0 is not on the local PC. This step takes approximately 20–30 minutes over a DSL connection.
3. Follow the prompts on the **Visual CRS Setup** screens and accept all the defaults.

4. Double-click the **Visual CRS** shortcut that displays on the desktop.
5. If this is the first install, a new connection must be added. Please refer to the *BMX 4.0 User Manual* for instructions.
6. When the **RPMS Login** window displays, enter the RPMS access, and verify codes and click **OK**.
7. If data for multiple facilities is stored on the same RPMS database, the **Select Division** window displays. Select a Division and click **OK**.
8. You are now running the Visual CRS software.

## 4.0 Sample Installations

### 4.1 Sample Installation of CRS on RPMS Server

```

CMBB>D ^XPKRN

KIDS 8.0

Select KIDS OPTION: 1  LOAD A DISTRIBUTION
Enter a Host File: G:\pub\crs\24.1\i1\bgp_2410.k

KIDS Distribution saved on Jul 02, 2024@12:07:09
Comment: IHS CLINICAL REPORTING V24.1

This Distribution contains Transport Globals for the following Package(s):
Build IHS CLINICAL REPORTING 24.1 has been loaded before, here is when:
      IHS CLINICAL REPORTING 24.1   Install Completed
                                   was loaded on Jun 04, 2024@09:06:07
OK to continue with Load? NO// y  YES

Distribution OK!

Want to Continue with Load? YES//
Loading Distribution...

Build IHS CLINICAL REPORTING 24.1 has an Environmental Check Routine
Want to RUN the Environment Check Routine? YES//
      IHS CLINICAL REPORTING 24.1
Will first run the Environment Check Routine, BGPDPDS

      Patch "XU*8.0*1018" is installed.
      Patch "DI*22.0*1018" is installed.
      Patch "ATX*5.1*54" is installed.
      CRS (BGP) Version 24.0 is installed.
Use INSTALL NAME: IHS CLINICAL REPORTING 24.1 to install this Distribution.

CMBB>d ^XPKRN

KIDS 8.0

Select KIDS OPTION: ?
  Answer with KIDS OPTION NUMBER, or NAME
  Choose from:
  1          LOAD A DISTRIBUTION
  2          VERIFY CHECKSUMS IN TRANSPORT GLOBAL
  3          PRINT TRANSPORT GLOBAL
  4          COMPARE TRANSPORT GLOBAL TO CURRENT SYSTEM
  5          BACKUP A TRANSPORT GLOBAL
  6          INSTALL PACKAGE(S)
  7          RESTART INSTALL OF PACKAGE(S)
  8          UNLOAD A DISTRIBUTION

```

```
Select KIDS OPTION: INSTALL PACKAGE(S)
Select INSTALL NAME:   IHS CLINICAL REPORTING 24.1      Loaded from Distribution
                      7/2/24@12:16:01
                      => IHS CLINICAL REPORTING V24.1   ;Created on Jul 02, 2024@12:07:09

This Distribution was loaded on Jul 02, 2024@12:16:01 with header of
IHS CLINICAL REPORTING V24.1 ;Created on Jul 02, 2024@12:07:09
It consisted of the following Install(s):
IHS CLINICAL REPORTING 24.1
Checking Install for Package IHS CLINICAL REPORTING 24.1
Will first run the Environment Check Routine, BGPDPOS

                Patch "XU*8.0*1018" is installed.
                Patch "DI*22.0*1018" is installed.
                Patch "ATX*5.1*54" is installed.
                CRS (BGP) Version 24.0 is installed.

Install Questions for IHS CLINICAL REPORTING 24.1

Incoming Files:

    90241.01 BGP CONTROL FILE (including data)
Note: You already have the 'BGP CONTROL FILE' File.
I will REPLACE your data with mine.

    90241.02 BGP SITE PARAMETERS
Note: You already have the 'BGP SITE PARAMETERS' File.

    90241.03 BGP SUMMARY CATEGORIES (including data)
Note: You already have the 'BGP SUMMARY CATEGORIES' File.
I will REPLACE your data with mine.

    90241.04 BGP CLIENT AUTOMATED GPRA EXTRACT PARAMS
Note: You already have the 'BGP CLIENT AUTOMATED GPRA EXTRACT PARAMS' File.

    90245      BGP AREA AUTOMATED GPRA PARAMS
Note: You already have the 'BGP AREA AUTOMATED GPRA PARAMS' File.

    90245.1    BGP GPRA FLAT FILE DATA
Note: You already have the 'BGP GPRA FLAT FILE DATA' File.

    90568.01 BGP 24 MEASURES (including data)
Note: You already have the 'BGP 24 MEASURES' File.
I will REPLACE your data with mine.

    90568.02 BGP 24 INDIVIDUAL MEASURES (including data)
Note: You already have the 'BGP 24 INDIVIDUAL MEASURES' File.
I will REPLACE your data with mine.

    90568.03 BGP 24 DATA CURRENT
```

Note: You already have the 'BGP 24 DATA CURRENT' File.

90568.04 BGP 24 DATA PREVIOUS

Note: You already have the 'BGP 24 DATA PREVIOUS' File.

90568.05 BGP 24 DATA BASELINE

Note: You already have the 'BGP 24 DATA BASELINE' File.

90568.06 BGP 24 NATIONAL PATIENT LISTS (including data)

Note: You already have the 'BGP 24 NATIONAL PATIENT LISTS' File.

I will REPLACE your data with mine.

90568.07 BGP 24 SNOMED SUBSETS (including data)

Note: You already have the 'BGP 24 SNOMED SUBSETS' File.

I will REPLACE your data with mine.

90568.08 BGP 24 TAXONOMIES USED (including data)

Note: You already have the 'BGP 24 TAXONOMIES USED' File.

I will REPLACE your data with mine.

90568.1 BGP 24 MEASURE GROUPS (including data)

Note: You already have the 'BGP 24 MEASURE GROUPS' File.

I will REPLACE your data with mine.

90568.17 BGP 24 ICARE GROUPS (including data)

Note: You already have the 'BGP 24 ICARE GROUPS' File.

I will REPLACE your data with mine.

90568.18 BGP 24 ICARE CATEGORIES (including data)

Note: You already have the 'BGP 24 ICARE CATEGORIES' File.

I will REPLACE your data with mine.

90568.19 BGP 24 GUI REPORT OUTPUT

Note: You already have the 'BGP 24 GUI REPORT OUTPUT' File.

90568.21 BGP 24 SNOMED LISTS (including data)

Note: You already have the 'BGP 24 SNOMED LISTS' File.

I will REPLACE your data with mine.

90568.22 BGP 24 ELDER INDIVIDUAL MEASURES (including data)

Note: You already have the 'BGP 24 ELDER INDIVIDUAL MEASURES' File.

I will REPLACE your data with mine.

90568.23 BGP 24 ELDER DATA CURRENT

Note: You already have the 'BGP 24 ELDER DATA CURRENT' File.



90568.24 BGP 24 ELDER DATA PREVIOUS  
Note: You already have the 'BGP 24 ELDER DATA PREVIOUS' File.

90568.25 BGP 24 ELDER DATA BASELINE  
Note: You already have the 'BGP 24 ELDER DATA BASELINE' File.

90568.26 BGP 24 ELDER MEASURES (including data)  
Note: You already have the 'BGP 24 ELDER MEASURES' File.  
I will REPLACE your data with mine.

Enter the Device you want to print the Install messages.  
You can queue the install by enter a 'Q' at the device prompt.  
Enter a '^' to abort the install.

DEVICE: HOME// Virtual  
qq

Install Started for IHS CLINICAL REPORTING 24.1 :  
Jul 02, 2024@12:16:18

Build Distribution Date: Jul 02, 2024

Installing Routines:  
Jul 02, 2024@12:16:20

Running Pre-Install Routine: PRE^BGPDPOS

Installing Data Dictionaries:  
.....  
..... Installing Data Dictionaries:  
.....  
..... Installing Data Dictionaries:  
.....  
..... Installing Data Dictionaries:  
.....  
..... Installing Data Dictionaries:  
.....  
..... Jul 02, 2024@12:16:23

Installing Data:  
Jul 02, 2024@12:16:29

Installing PACKAGE COMPONENTS:

Installing SECURITY KEY

Installing INPUT TEMPLATE

Installing PROTOCOL

Installing REMOTE PROCEDURE

```
Installing LIST TEMPLATE
```

```
Installing OPTION
```

```
Jul 02, 2024@12:16:30
```

```
Running Post-Install Routine: POST^BGPDPDS
```

```
Updating [BGP DM RETINAL EXAM CPTS] taxonomy...
```

```
Updating [BGP MENINGOCOCCAL CVX CODES] taxonomy...
```

```
Updating [BGP CPT MENINGOCOCCAL] taxonomy...
```

```
Updating [BGP HPV CPTS] taxonomy...
```

```
Updating [BGP MASTECTOMY CPTS] taxonomy...
```

```
Updating [BGP TOTAL COLECTOMY CPTS] taxonomy...
```

```
Updating [BGP CPT NUTRITION COUNSELING] taxonomy...
```

```
Updating [BGP HEP C SCREEN CPTS] taxonomy...
```

```
Updating [BGP HEP C CONF CPTS] taxonomy...
```

```
Updating [BGP CD4 LOINC CODES] taxonomy...
```

```
Updating [BGP CHLAMYDIA LOINC CODES] taxonomy...
```

```
Updating [BGP CREATININE LOINC CODES] taxonomy...
```

```
Updating [BGP HPV LOINC CODES] taxonomy...
```

```
Updating [BGP HPV PRIMARY LOINC CODES] taxonomy...
```

```
Updating [BGP HEDIS ASTHMA NDC] taxonomy...
```

```
Updating [BGP HEDIS ASTHMA LEUK NDC] taxonomy...
```

```
Updating [BGP HEDIS ASTHMA INHALED NDC] taxonomy...
```

```
Updating [BGP HEDIS CONTRACEPTION NDC] taxonomy...
```

```
Updating [BGP HEDIS ISOTRETINOIN NDC] taxonomy...
```

```
Updating [BGP HEDIS ANTITHROMBOTIC NDC] taxonomy...
```

```
Updating [BGP HEDIS CARDIOVASCULAR NDC] taxonomy...
```

```
Updating [BGP HEDIS CENTRAL NERVOUS NDC] taxonomy...
```

```
Updating [BGP HEDIS NONBENZODIAZ NDC] taxonomy...
```

```
Updating [BGP HEDIS ENDOCRINE NDC] taxonomy...
```

```
Updating [BGP HEDIS PAIN NDC] taxonomy...
```

```
Updating [BGP HEDIS SKL MUSCLE RELAX NDC] taxonomy...
```

```
Updating [BGP VIRAL LOAD LOINC CODES] taxonomy...
```

```
Updating [BGP HEDIS ANTI-INFECTIVE NDC] taxonomy...
```

```
Updating [BGP HEDIS ANTIDEPRESSANT NDC] taxonomy...
```

```
Updating [BGP HEDIS ANTICHOLINERGIC NDC] taxonomy...
```

```
BGP CMS ACEI MEDS CLASS
```

```
Creating BGP CMS ACEI MEDS Taxonomy...
```

```
BGP CMS BETA BLOCKER CLASS BGP CMS BETA BLOCKER NDC
```

```
Creating BGP CMS BETA BLOCKER MEDS Taxonomy...
```

```
BGP CMS ANTIBIOTICS MEDS CLASS
```

```
Creating BGP CMS ANTIBIOTIC MEDS Taxonomy...
```

```
BGP CMS ARB MEDS CLASS
```

```
Creating BGP CMS ARB MEDS Taxonomy...
```

```
Creating DM AUDIT ASPIRIN DRUGS Taxonomy...
```

```
BGP CMS ANTI-PLATELET CLASS
```

```
Creating BGP ANTI-PLATELET DRUGS Taxonomy...
```

```
BGP HEDIS OSTEOPOROSIS NDC
```

```
Creating BGP HEDIS OSTEOPOROSIS DRUGS Taxonomy...
```

```
BGP ASTHMA CONTROLLER NDC
```

```
Creating BGP ASTHMA CONTROLLERS Taxonomy...
```

```
BGP ASTHMA INHALED STEROID VAP
```

```
Creating BGP ASTHMA INHALED STEROIDS Taxonomy...
```

```
BGP ASTHMA LEUKOTRIENE NDC
```

```
Creating BGP ASTHMA LEUKOTRIENE Taxonomy...
```

```
BGP HEDIS ANTIDEPRESSANT NDC
```

```
Creating BGP HEDIS ANTIDEPRESSANT MEDS Taxonomy...
```

```
BGP RA OA NSAID VAPI
```

```

Creating BGP RA OA NSAID MEDS Taxonomy...
BGP RA GLUCOCORTICIDS CLASS BGP RA GLUCOCORTICIDS VAPI
Creating BGP RA GLUCOCORTICIDS MEDS Taxonomy...
  BGP HEDIS ANTIBIOTICS NDC
Creating BGP HEDIS ANTIBIOTICS MEDS Taxonomy...
  BGP HEDIS ASTHMA LEUK NDC
Creating BGP HEDIS ASTHMA LEUK MEDS Taxonomy...
  BGP HEDIS ASTHMA NDC
Creating BGP HEDIS ASTHMA MEDS Taxonomy...
  BGP HEDIS PRIMARY ASTHMA NDC
Creating BGP HEDIS PRIMARY ASTHMA MEDS Taxonomy...
  BGP HEDIS ASTHMA INHALED NDC
Creating BGP HEDIS ASTHMA INHALED MEDS Taxonomy...
  BGP HEDIS BETA BLOCKER NDC
Creating BGP HEDIS BETA BLOCKER MEDS Taxonomy...
  BGP RA IM GOLD NDC
Creating BGP RA IM GOLD MEDS Taxonomy...
  BGP RA AZATHIOPRINE VAPI
Creating BGP RA AZATHIOPRINE MEDS Taxonomy...
  BGP RA LEFLUNOMIDE VAPI
Creating BGP RA LEFLUNOMIDE MEDS Taxonomy...
  BGP RA ORAL GOLD VAPI
Creating BGP RA ORAL GOLD MEDS Taxonomy...
  BGP RA CYCLOSPORINE NDC
Creating BGP RA CYCLOSPORINE MEDS Taxonomy...
  BGP RA METHOTREXATE VAPI
Creating BGP RA METHOTREXATE MEDS Taxonomy...
  BGP RA MYCOPHENOLATE VAPI
Creating BGP RA MYCOPHENOLATE MEDS Taxonomy...
  BGP RA PENICILLAMINE VAPI
Creating BGP RA PENICILLAMINE MEDS Taxonomy...
  BGP RA SULFASALAZINE VAPI
Creating BGP RA SULFASALAZINE MEDS Taxonomy...
BGP THROMBOLYTIC AGENT CLASS
Creating BGP CMS THROMBOLYTIC MEDS Taxonomy...
  BGP HEDIS ANTICHOLINERGIC NDC
Creating BGP HEDIS ANTICHOLINERGIC MEDS Taxonomy...
  BGP HEDIS ANTITHROMBOTIC NDC
Creating BGP HEDIS ANTITHROMBOTIC MEDS Taxonomy...
  BGP HEDIS ANTI-INFECTIVE NDC
Creating BGP HEDIS ANTI-INFECTIVE MEDS Taxonomy...
  BGP HEDIS CARDIOVASCULAR NDC
Creating BGP HEDIS CARDIOVASCULAR MEDS Taxonomy...
  BGP HEDIS CENTRAL NERVOUS NDC
Creating BGP HEDIS CENTRAL NERVOUS MEDS Taxonomy...
  BGP HEDIS NONBENZODIAZ NDC
Creating BGP HEDIS NONBENZODIAZ MEDS Taxonomy...
  BGP HEDIS ENDOCRINE NDC
Creating BGP HEDIS ENDOCRINE MEDS Taxonomy...
  BGP HEDIS GASTROINTESTINAL NDC
Creating BGP HEDIS GASTROINTESTINAL MED Taxonomy...
  BGP HEDIS PAIN NDC
Creating BGP HEDIS PAIN MEDS Taxonomy...
  BGP HEDIS SKL MUSCLE RELAX NDC
Creating BGP HEDIS SKL MUSCLE RELAX MED Taxonomy...
  BGP HEDIS ACEI NDC
Creating BGP HEDIS ACEI MEDS Taxonomy...
  BGP HEDIS ARB NDC
Creating BGP HEDIS ARB MEDS Taxonomy...

```

```

BGP HEDIS STATIN NDC
Creating BGP HEDIS STATIN MEDS Taxonomy...
  BGP CMS WARFARIN VAPI
Creating BGP PQA WARFARIN MEDS Taxonomy...
  BGP HEDIS ISOTRETINOIN NDC
Creating BGP HEDIS ISOTRETINOIN MEDS Taxonomy...
  BGP HEDIS CONTRACEPTION NDC
Creating BGP HEDIS CONTRACEPTION MEDS Taxonomy...
  BGP PQA OPIOID NDC
Creating BGP PQA OPIOID MEDS Taxonomy...
  BGP PQA BENZODIAZ OP NDC
Creating BGP PQA BENZODIAZ OP MEDS Taxonomy...
  BGP PQA BETA BLOCKER NDC
Creating BGP PQA BETA BLOCKER MEDS Taxonomy...
  BGP PQA RASA NDC
Creating BGP PQA RASA MEDS Taxonomy...
  BGP PQA CCB NDC
Creating BGP PQA CCB MEDS Taxonomy...
  BGP PQA BIGUANIDE NDC
Creating BGP PQA BIGUANIDE MEDS Taxonomy...
  BGP PQA SULFONYLUREA NDC
Creating BGP PQA SULFONYLUREA MEDS Taxonomy...
  BGP PQA THIAZOLIDINEDIONE NDC
Creating BGP PQA THIAZOLIDINEDIONE MEDS Taxonomy...
  BGP PQA STATIN NDC
Creating BGP PQA STATIN MEDS Taxonomy...
  BGP PQA ANTIRETROVIRAL NDC
Creating BGP PQA ANTIRETROVIRAL MEDS Taxonomy...
  BGP PQA SABA NDC
Creating BGP PQA SABA MEDS Taxonomy...
  BGP PQA CONTROLLER NDC
Creating BGP PQA CONTROLLER MEDS Taxonomy...
  BGP ASTHMA LABA NDC
Creating BGP ASTHMA LABA MEDS Taxonomy...
  BGP PQA DPP IV NDC
Creating BGP PQA DPP IV MEDS Taxonomy...
  BGP PQA DIABETES ALL CLASS NDC
Creating BGP PQA DIABETES ALL CLASS Taxonomy...
  BGP PQA NON-WARF ANTICOAG NDC
Creating BGP PQA NON-WARF ANTICOAG MEDS Taxonomy...
  BGP PQA WARFARIN NDC
Creating BGP PQA WARFARIN MEDS Taxonomy...
  BGP PQA COPD NDC
Creating BGP PQA COPD MEDS Taxonomy...
  BGP PQA ASTHMA INHALE STER NDC
Creating BGP PQA ASTHMA INHALE STER MED Taxonomy...
  BGP PQA BENZODIAZ NDC
Creating BGP PQA BENZODIAZ MEDS Taxonomy...
  BGP PQA ARB NEPRILYSIN NDC
Creating BGP PQA ARB NEPRILYSIN MEDS Taxonomy...
  BGP PQA LA INHALED BRONCHO NDC
Creating BGP PQA LA INHALED BRONCHO MED Taxonomy...
  BGP PQA NEBULIZED BRONCHO NDC
Creating BGP PQA NEBULIZED BRONCHO MEDS Taxonomy...
  BGP PQA NON-INFUSED MS NDC
Creating BGP PQA NON-INFUSED MS MEDS Taxonomy...
  BGP PQA INFUSED MS NDC
Creating BGP PQA INFUSED MS MEDS Taxonomy...
  BGP HEDIS ANTIDEPRESSANT NDC

```

```
Creating BGP HEDIS ANTIDEPRESSANT MEDS Taxonomy...
  BGP CMS SMOKING CESSATION VAPI
Creating BGP CMS SMOKING CESSATION MEDS Taxonomy...

Creating BGP CMS SYSTEMIC CHEMO MEDS Taxonomy...

Creating BGP CMS IMMUNOSUPPRESSIVE MEDS Taxonomy...
BGP IPC DEPRESSION RXNORM
Creating BGP IPC DEPRESSION MEDS Taxonomy...
BGP IPC ABOVE NORMAL RXNORM
Creating BGP IPC ABOVE NORMAL MEDS Taxonomy...
BGP IPC BELOW NORMAL RXNORM
Creating BGP IPC BELOW NORMAL MEDS Taxonomy...
BGP ECQM DEMENTIA RXNORM
Creating BGP ECQM DEMENTIA MEDS Taxonomy...
BGP ECQM TOB CESSATION RXNORM
Creating BGP ECQM TOB CESSATION MEDS Taxonomy...
Creating/Updating SSC ADA Codes Taxonomy...

Updating Routine file...

Updating KIDS files...

IHS CLINICAL REPORTING 24.1 Installed.
      Jul 02, 2024@12:17:11

Not a VA primary domain

Install Completed
```

Figure 4-1: Sample installation for IHS Clinical Reporting package 24.0

## 4.2 Sample Installation of the CRS GUI

1. Double-click **bgp\_2410setup.exe** to launch the **Indian Health Service CRS Setup Wizard**.
2. The **Indian Health Service CRS Setup Wizard** dialog displays (Figure 4-2).

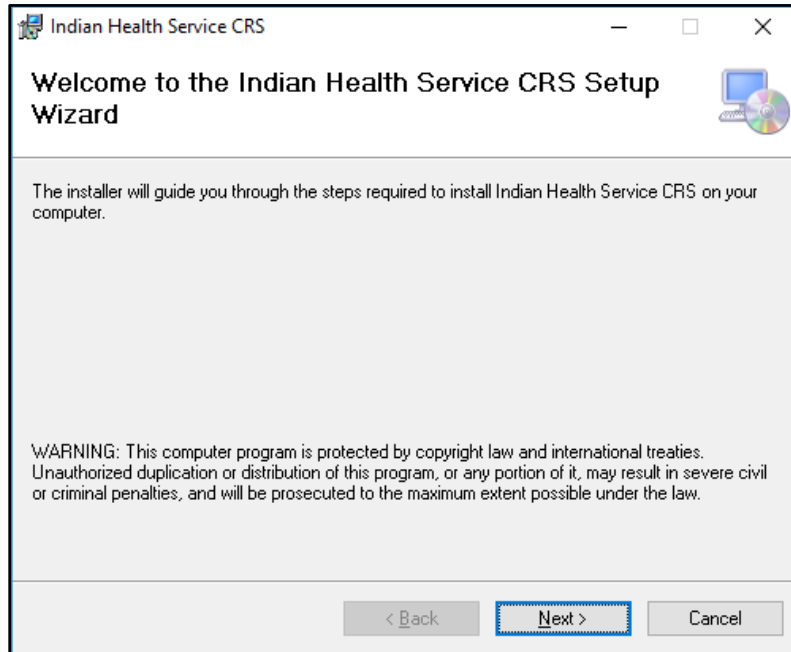


Figure 4-2: Indian Health Service CRS Setup Wizard, Welcome dialog

3. Click **Next** on the Setup Wizard dialog to display the **Select Installation Folder** dialog. See Figure 4-3.

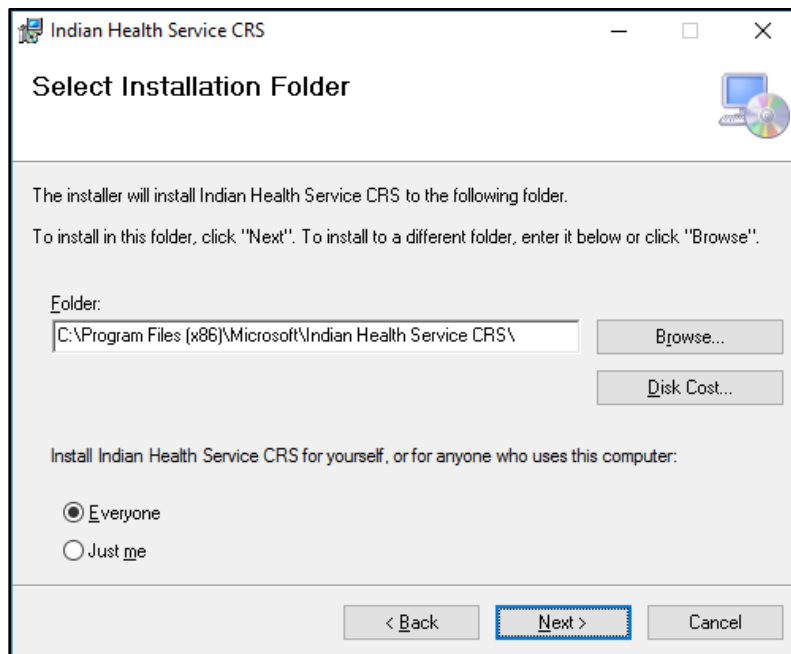


Figure 4-3: Indian Health Service CRS Setup Wizard, Select Installation Folder dialog

- Click **Next** to display the **Confirm Installation** dialog. See Figure 4-4.

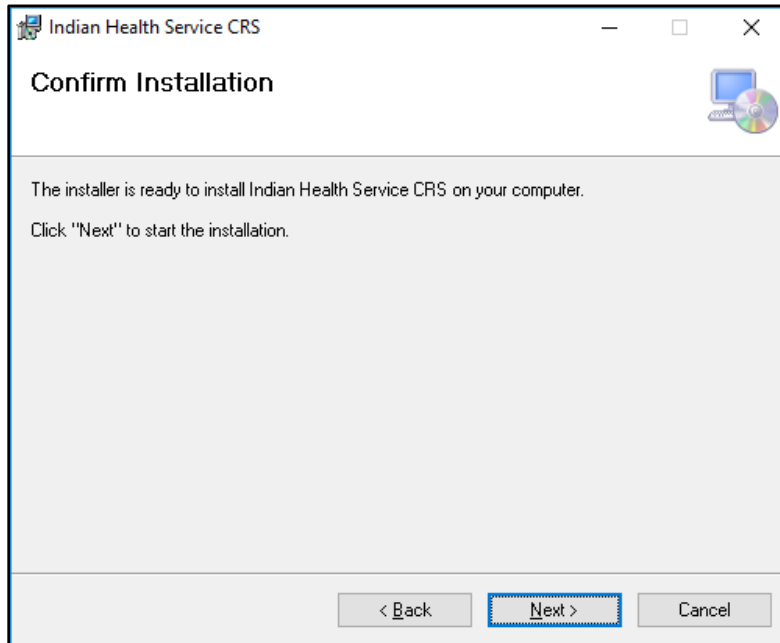


Figure 4-4: Indian Health Service CRS Setup Wizard, Confirm Installation dialog

- Click **Next** to display the **Installing Indian Health Service CRS** dialog. See Figure 4-5.

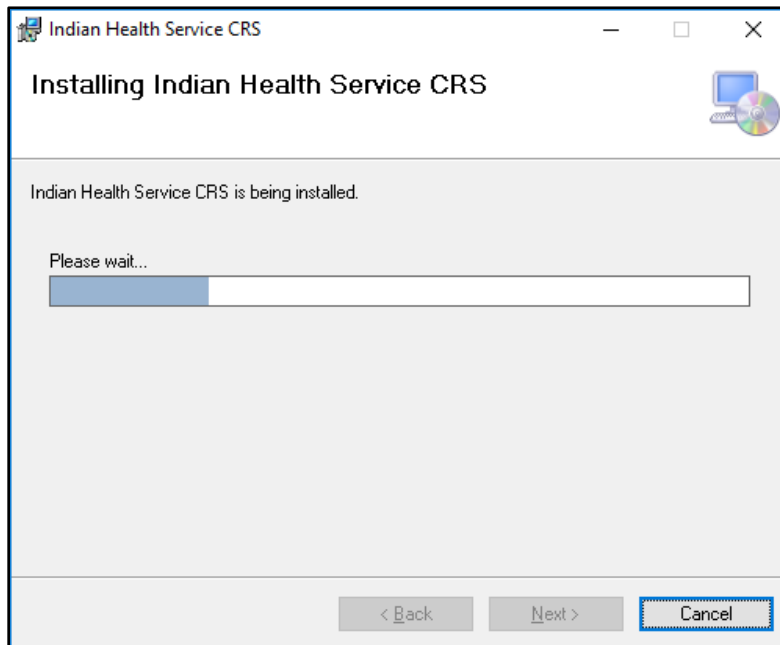


Figure 4-5: Indian Health Service CRS Setup Wizard, Installing Visual CRS dialog

6. Wait while the application installs. When the installation is complete, the **Installation Complete** dialog displays. See Figure 4-6.

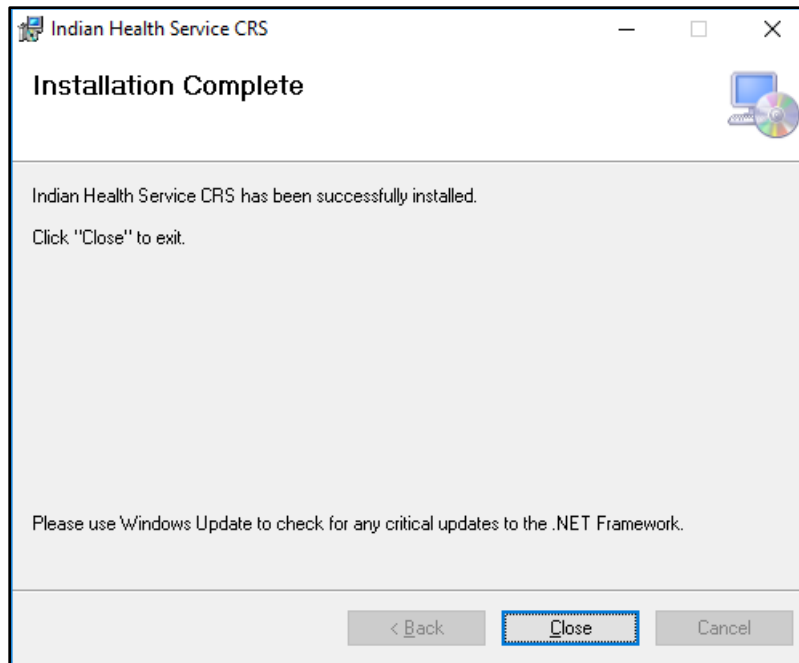


Figure 4-6: Indian Health Service CRS Setup Wizard, Installation Complete dialog

7. Click **Close**.

A desktop shortcut named **CRS 24.1** should now be available. Refer to the user manual for instructions on use of the Visual CRS application.



## 5.0 Installation Configuration

The requirements for successful installation are listed in Sections 2.2.1 (KIDS build) and 2.3.2 (GUI install). There are no other reference materials other than this installation manual.

## Acronym List

Acronym	Definition
BNI	Brief Negotiated Interview
CPT	Current Procedural Terminology
CRS	Clinical Reporting System
eCQM	Electronic Clinical Quality Measures
ENDS	Electronic Nicotine Delivery Systems
FY	Fiscal Year
GPRA	Government Performance and Results Act
GPRAMA	GPRA Modernization Act
GUI	Graphical User Interface
HEDIS	Healthcare Effectiveness Data and Information Set
ICD	International Classification of Diseases
IHS	Indian Health Service
IPC	Improving Patient Care
KIDS	Kernel Installation and Distribution System
LDL	Low-Density Lipoprotein
PPN	Patient Preferred Name
RPMS	Resource and Patient Management System
SBIRT	Screening, Brief Intervention, and Referral to Treatment
SNOMED	Systematized Nomenclature of Medicine
SUD	Substance Use Disorder
UCI	Unique Client Identifier

## Contact Information

If you have any questions or comments regarding this distribution, please contact the IHS IT Service Desk.

**Phone:** (888) 830-7280 (toll free)

**Web:** <https://www.ihs.gov/itsupport/>

**E-mail:** [itsupport@ihs.gov](mailto:itsupport@ihs.gov)