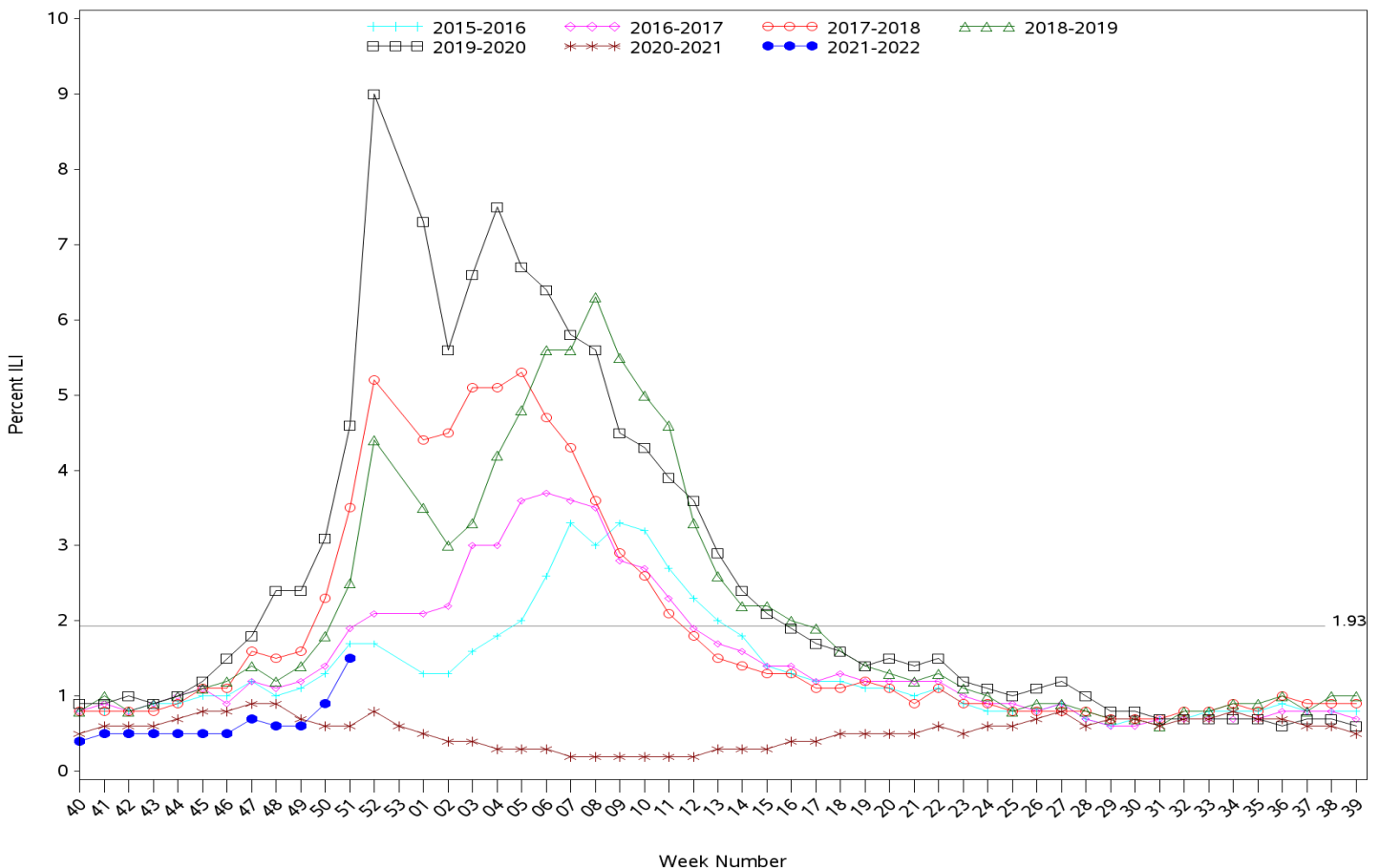




Indian Health Service
 Division of Epidemiology and Disease Prevention
Influenza-like Illness Surveillance Report
IHS Influenza Awareness System (IIAS)
(Week 51: 12/19/2021 – 12/25/2021)

- IHS national Influenza-like illness (ILI) activity is low at 1.5%, below the IHS baseline of 1.93%
 - Seven out of eleven IHS Areas reported an increase in ILI activity, while other IHS Areas reported having consistent or slightly decreased ILI activity from the previous week.
 - This week's IHS ILI activity is below the CDC's ILINet ILI activity for week 51 (3.84%), and below the ILINet baseline (2.5%) and the IHS baseline of 1.93%.
- To date, IHS has administered 160,057 doses of influenza vaccine.
- Overall, 24.0% of the IHS Active Clinical population ages 6 months and older has received an influenza vaccine this season to date.
- The data within this report reflects data gathered after the installation of ILI/H1N1 Surveillance Export (APCL v3.0 patch 33) at most sites. Patch change request information can be provided upon request.

All Reporting IHS Areas
Influenza-Like Illness (ILI) for Current Surveillance Year and Previous Six Surveillance Years
Percentage of Visits for ILI Visits per Week



Percent ILI visits is number of ILI visits divided by total number of daily outpatient visits.

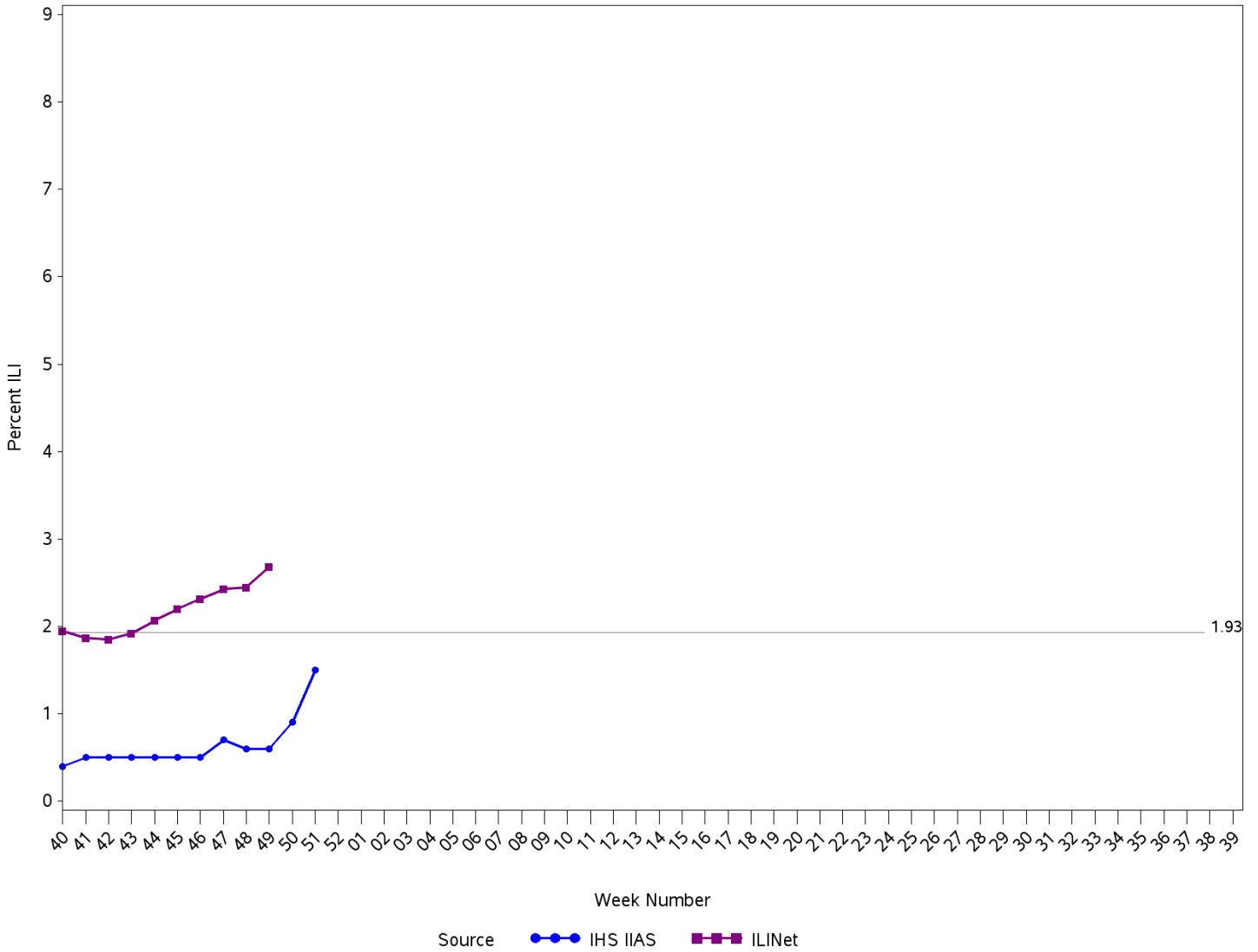
The horizontal line represents the 2021-2022 IIAS baseline. The baseline is the mean percentage of patient visits for ILI during non-influenza weeks (as defined by CDC) for the previous four seasons plus two standard deviations.

The horizontal line is the 2021-2022 IIAS baseline. The ILINet baseline value for 2021-2022 is 2.5.

Baselines are computed as the mean percentage of ILI patient visits during non-influenza weeks (as defined by CDC) for the previous three seasons, plus two standard deviations.

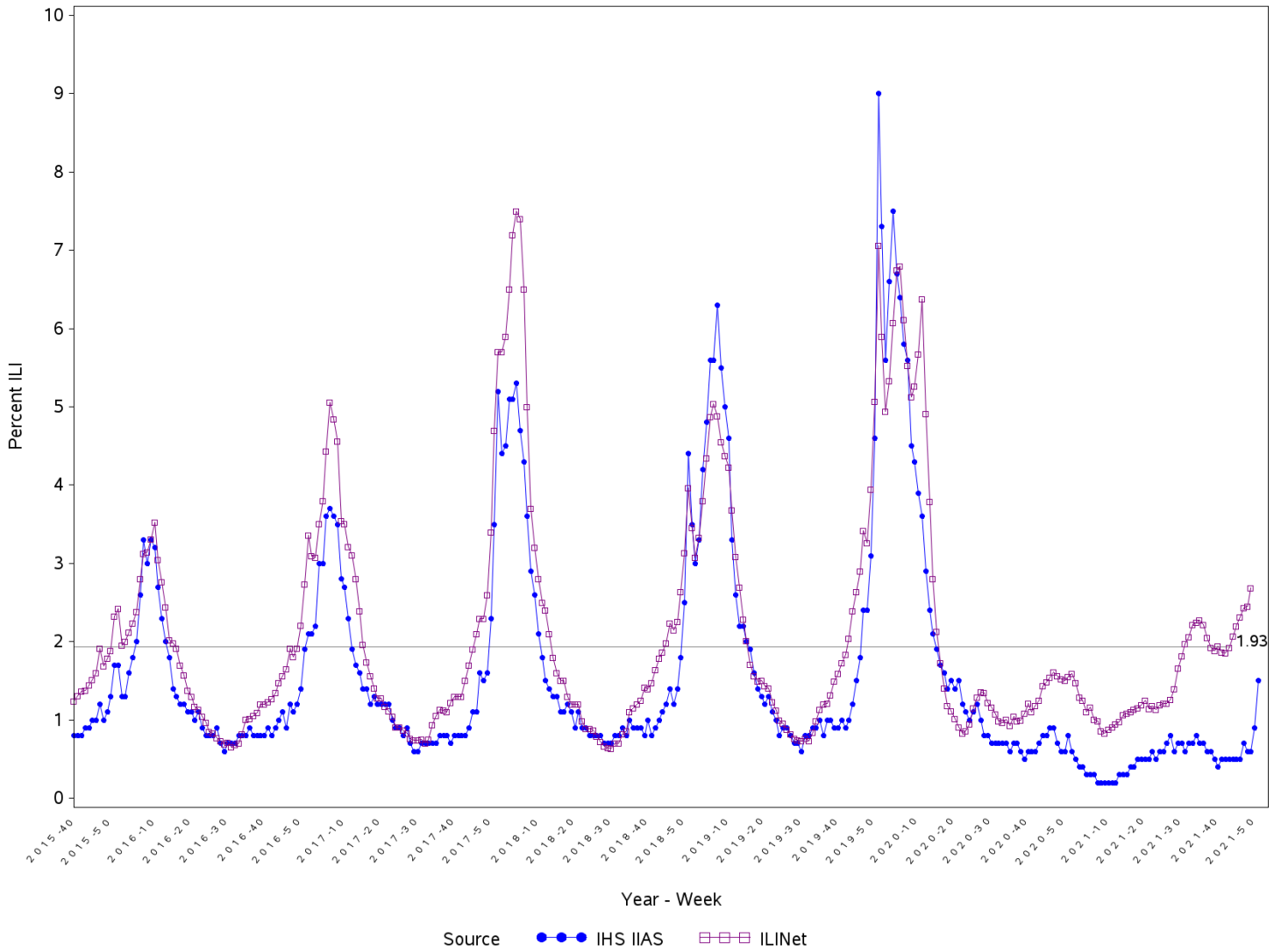
Sources: ILINet - CDC Sentinel Surveillance System for Influenza-Like Illness, IIAS - IHS Influenza Awareness System

Percentage of Outpatient Visits for Influenza-Like Illness (ILI)
Percent ILI for Flu Year 2021 - 2022
CDC ILINet vs. IHS Influenza-like Illness Awareness System (IIAS)
10/03/21 through 12/25/21 (Week 51)



Percent ILI visits is number of ILI visits divided by total number of daily outpatient visits.
 The horizontal line is the 2021-2022 IHS Influenza-like Illness Awareness System baseline. The CDC ILINet baseline value for 2021-2022 is 2.5.
 Baselines are computed as the mean percentage of ILI patient visits during non-influenza weeks (as defined by CDC) for the previous four seasons, plus two standard deviations.
 Sources: ILINet - CDC Sentinel Surveillance System for Influenza-Like Illness, IHS IIAS - Influenza-like Illness Awareness System

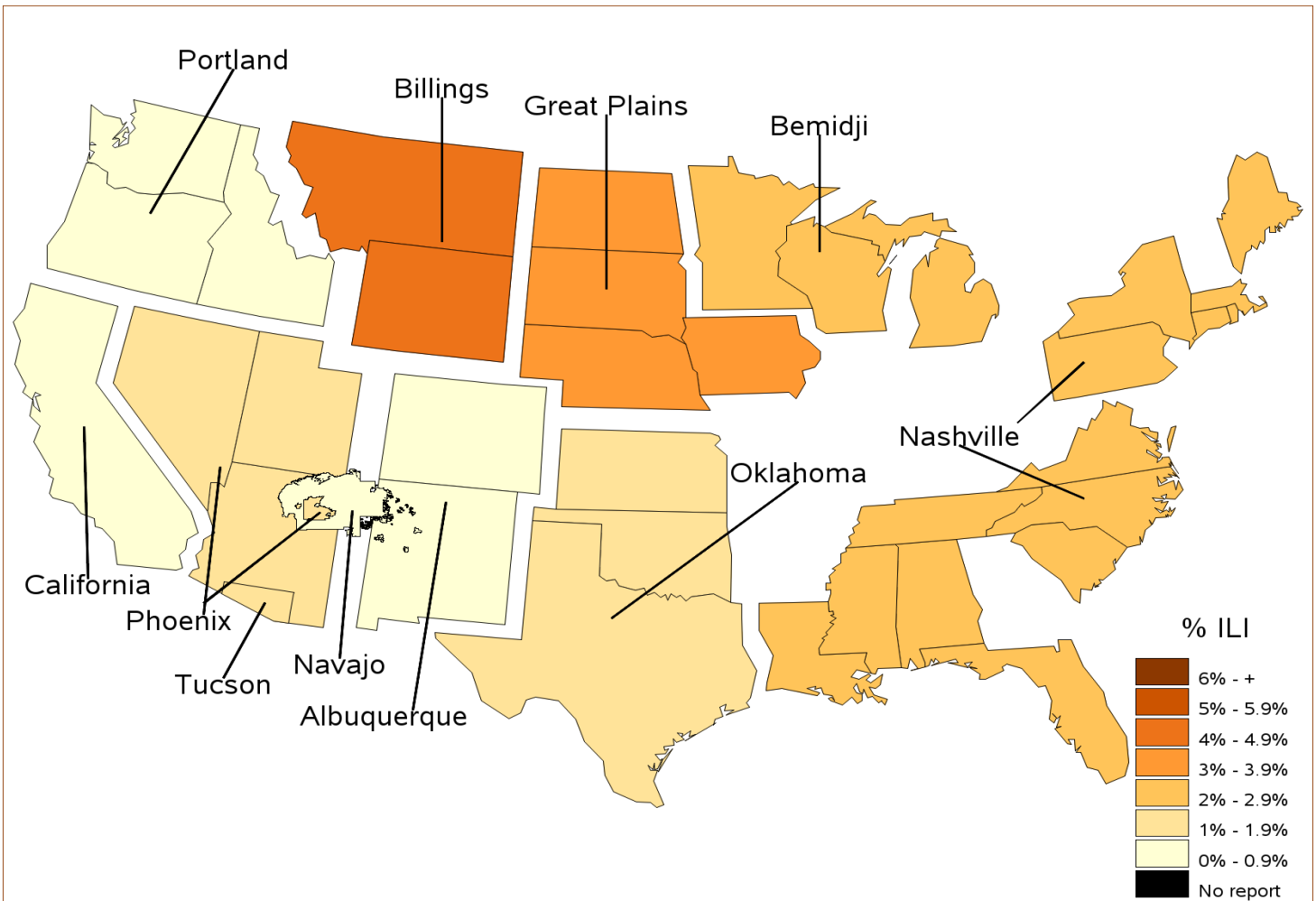
**IHS Influenza-like Illness Awareness System vs. CDC ILINet
Influenza-Like Illness (ILI) for six year window from latest full week
Percentage of Visits for ILI per week
10/03/21 through 12/25/21 (Week 51)**



Percent ILI visits is number of ILI visits divided by total number of daily outpatient visits.
 The horizontal line is the 2021-2022 IHS Influenza-like Illness Awareness System baseline. The CDC ILINet baseline value for 2021-2022 is 2.5.
 Baselines are computed as the mean percentage of ILI patient visits during non-influenza weeks (as defined by CDC) for the previous four seasons, plus two standard deviations.

Sources: ILINet - CDC Sentinel Surveillance System for Influenza-Like Illness, IHS IAS - Influenza-like Illness Awareness System

**Percentage of Influenza-Like Illness Visits by IHS Area
For Week Ending 12/25/21 (Week 51)**



**Percent ILI Visits*
Current week compared to previous week
For Week Ending 12/25/21 (Week 51)**

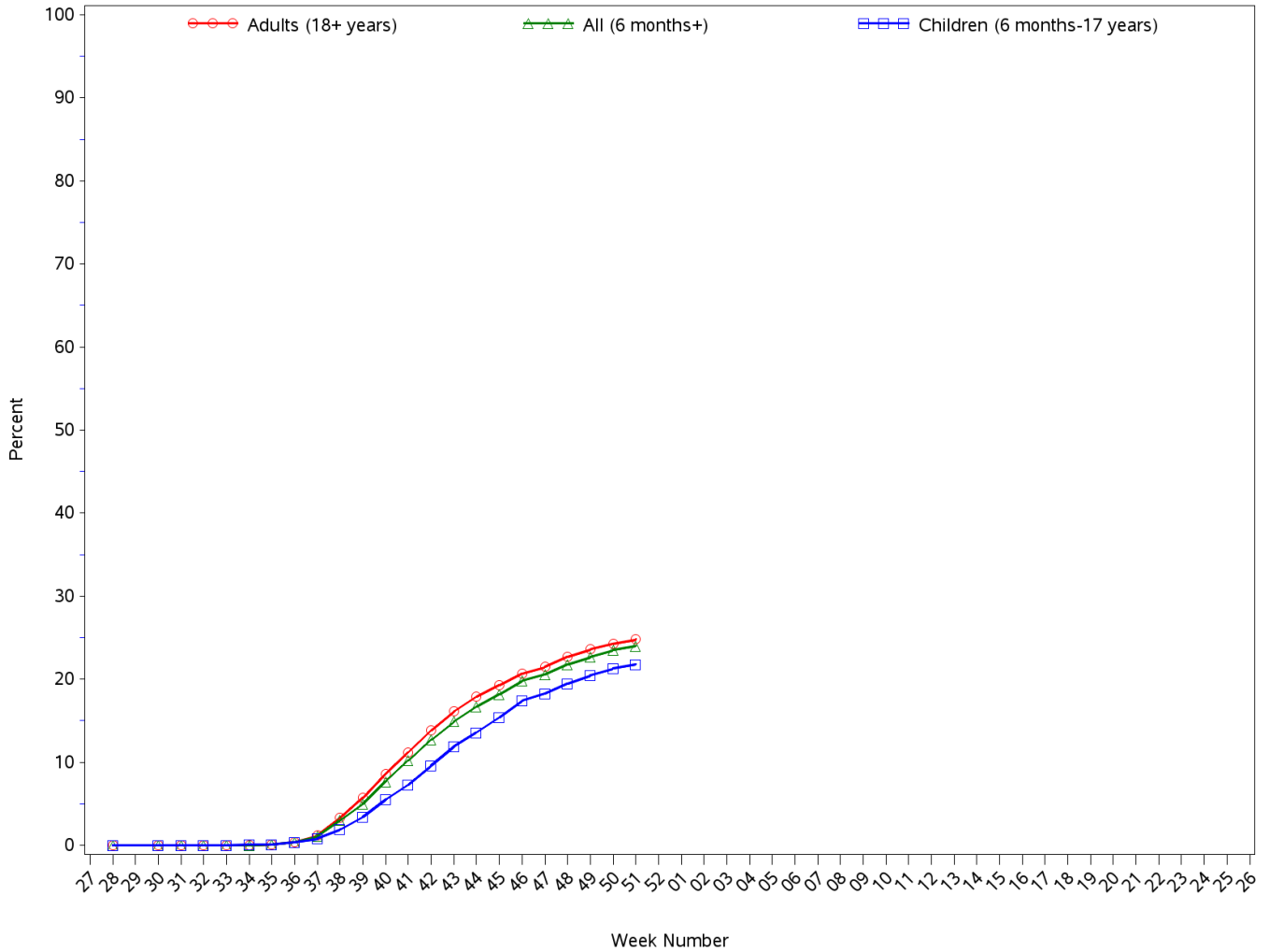
IHS Areas	Previous Week (50)	Current Week (51)
NATIONAL	0.9	1.5
ALBUQUERQUE	0.1	0.5
BEMIDJI	1.0	2.4
BILLINGS	2.4	4.6
CALIFORNIA	0.1	0.1
GREAT PLAINS	0.9	3.7
NASHVILLE	1.6	2.0
NAVAJO	0.4	0.3
OKLAHOMA	1.5	1.2
PHOENIX	0.8	1.2
PORTLAND	0.2	0.2
TUCSON	0.6	1.2

*Percentage of ILI visits is number of ILI visits divided by total number of daily visits.

IHS Influenza Vaccination Surveillance

As of 12/25/2021, sites reporting to the IAS have administered 160,057 doses (1st and 2nd) of seasonal influenza vaccine to active clinical patients 6 months of age and older.

All Reporting IHS Areas
Percentage of Seasonal Influenza Vaccine Coverage among Active Clinical Population
07/04/21 through 12/25/21 (Week 51)



**All Reporting IHS Areas
Seasonal Influenza Vaccine Coverage by Age Group*
Active Clinical Population**
07/04/21 through 12/25/21 (Week 51)**

Age Group	Active Clinical Population**	Seasonal Flu Vaccine (At Least 1 Dose)***	% Seasonal Flu (At Least 1 Dose)	Seasonal Flu Vaccine (At Least 2 Doses)	% Seasonal Flu (At Least 2 Doses)	Total # Doses Administered****
0 - 5 months	2,472	15	0.6	0	0.0	15
6 - 23 months	12,341	3,516	28.5	515	4.2	4,036
2 - 4 years	32,925	5,142	15.6	47	0.1	5,209
5 - 17 years	134,087	30,527	22.8	108	0.1	30,743
18 - 49 years	272,114	56,007	20.6	225	0.1	56,459
50 - 64 years	120,828	42,437	35.1	192	0.2	42,848
65 + years	86,674	20,352	23.5	108	0.1	20,762
Children (6 months-17 years)	179,353	39,185	21.8	670	0.4	39,988
Adults (18+ years)	479,616	118,796	24.8	525	0.1	120,069
All (6 months+)	658,969	157,981	24.0	1,195	0.2	160,057

* Limited to sites that exported both doses administered along with accompanying Active Clinical population data.

** Active Clinical is defined as patients who have had at least 2 visits in the last 3 years.

*** Number of unique patients with at least 1 dose.

**** Total # Doses Administered = All doses administered to patients including doses not included in coverage calculation due to lack of Active Clinical Population

**Seasonal Influenza Vaccination Code Counts by IHS Area
07/04/21 through 12/25/21 (Week 51)**

Area	INACTIVE CVX CODES*	CVX 88 FLU-NOS**	CVX 149 FLU-LAIV4	CVX 150 FLU-IIV4pf	CVX 158 FLU-IIV4	CVX 161 IIV4pf ped	CVX 168 FLU-IIV3ad	CVX 171 FLU-ccl4pf	CVX 185 FLU-RIV4	CVX 186 FLU-ccl4	CVX 197 FLU-HIGH	CVX 205 FLU-IIV4ad	Proc 99.52 Vac Inf	ICD-9 V04.81 Vac Inf	CPT Billing Codes+	Cumulative # of Doses Seasonal Flu
ALB	135	303	55	9,076	5,812	203	11	14	8	24	0	0	0	0	62	15,703
BEM	26	67	19	4,026	92	1	0	14	10	2	0	0	0	0	29	4,286
BIL	127	96	106	6,657	1,733	24	0	9	41	9	0	0	0	0	45	8,847
CAO	770	153	5	1,968	386	16	3	273	186	151	0	0	0	0	29	3,940
GPA	668	137	10	6,591	1,100	831	0	13	0	2	0	0	0	0	17	9,369
NSA	365	211	29	4,860	3,184	12	1	47	14	3	0	0	0	0	84	8,810
NAV	101	286	1	43,213	3,508	197	1	56	9	246	0	0	0	0	196	47,814
OKC	1,228	1,644	303	26,277	4,252	343	27	101	95	23	0	0	0	0	83	34,376
PHX	234	402	1	14,431	6,640	77	2	19	5	7	0	0	0	0	56	21,874
POR	97	54	34	401	1,342	13	0	153	1	1	0	0	0	0	11	2,107
TUC	23	7	0	4,438	41	25	0	4	0	0	0	0	0	0	8	4,546
	3,774	3,360	563	121,938	28,090	1,742	45	703	369	468	0	0	0	0	620	161,672

Patient Counts Not Deduplicated

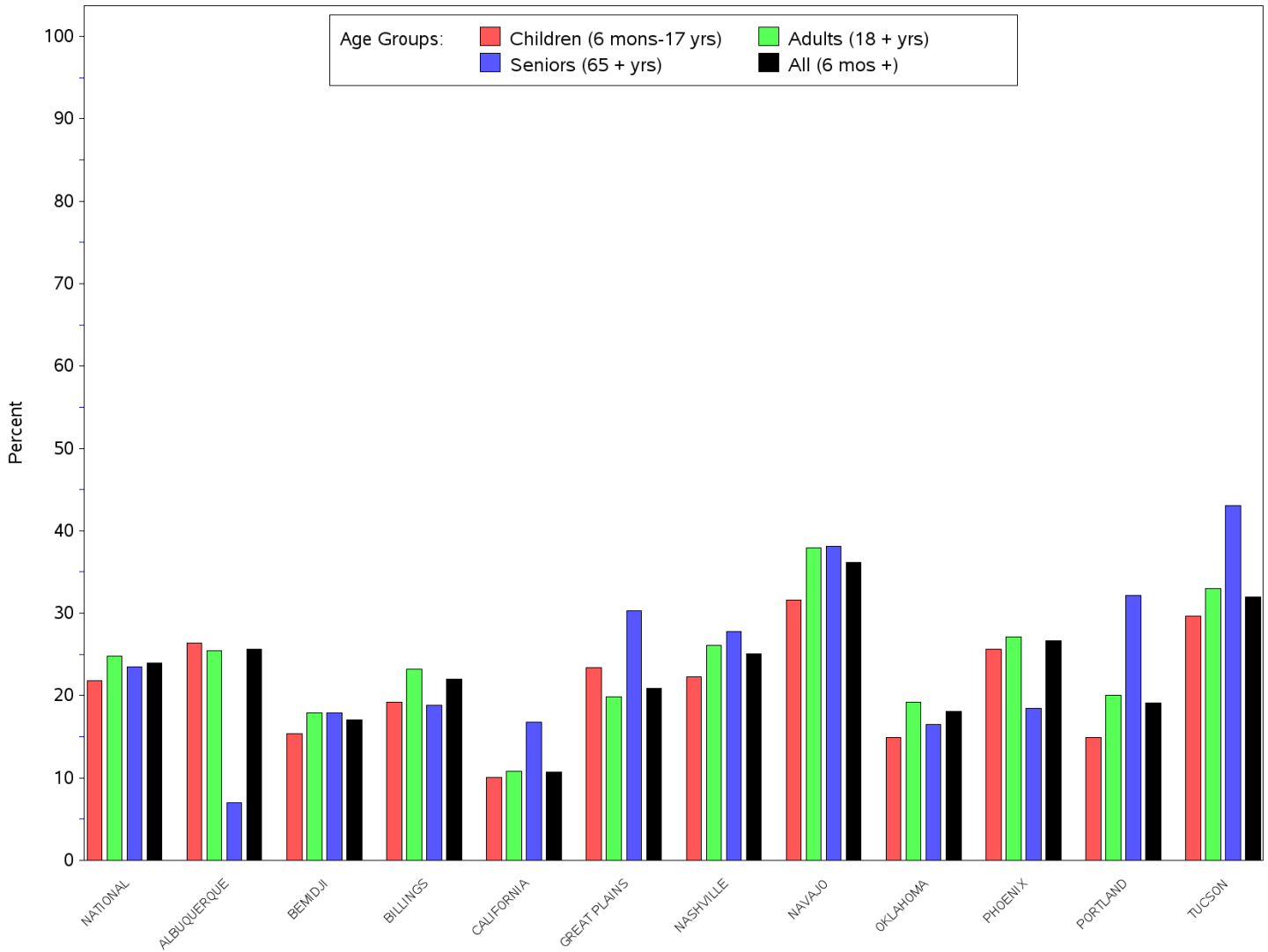
* Inactive CVX Codes 15 (FLU-TIVhx), 16 (FLU-WHOLE), 111 (FLU-LAIV3), 123 (FLU-H5N1), 135 (FLU-HIGH), 140 (FLU-IIV3pf), 141 (FLU-IIV3), 144 (FLU-DERMAL), 151 (FLU-NasNOS), 153 (FLU-ccIIV3), 155 (FLU-RIV3), 160 (H5N1,adj)and 166 (FLU-DERM4) should not be used to document flu vaccines administered during flu season 2020-2021.

** CVX Code 88 (FLU-NOS) should only be used to document flu vaccines given elsewhere when flu vaccine type is unknown.

+ CPT Flu codes include: 90654-90658,90662, 90672, 90673, 90685, 90686, G0008, and G8108.

^ ICD9 codes V04.8 and V06.6 are not displayed on this report and are not used in any of the influenza vaccine coverage calculations.

All Reporting IHS Areas
Influenza Vaccine Coverage for all Age Groups for National and in each Area
% Seasonal Flu (At Least 1 Dose) for Active Clinical Population
07/04/21 through 12/25/21 (Week 51)



All Reporting IHS Areas
Influenza Vaccine Coverage for all Age Groups for National and in each Area
% Seasonal Flu (At Least 1 Dose) for Active Clinical Population
07/04/21 through 12/25/21 (Week 51)

Area	Children (6 mons-17 yrs)	Adults (18+ yrs)	Seniors (65+ yrs)	All (6 mons +)
NATIONAL	21.8	24.8	23.5	24.0
ALBUQUERQUE	26.4	25.4	7.0	25.6
BEMIDJI	15.4	17.9	17.9	17.1
BILLINGS	19.2	23.2	18.8	22.0
CALIFORNIA	10.1	10.8	16.8	10.7
GREAT PLAINS	23.4	19.9	30.3	20.9
NASHVILLE	22.3	26.1	27.8	25.1
NAVAJO	31.6	37.9	38.1	36.2
OKLAHOMA	14.9	19.2	16.5	18.1
PHOENIX	25.6	27.1	18.5	26.7
PORTLAND	14.9	20.0	32.2	19.1
TUCSON	29.6	33.0	43.1	32.0

Number of RPMS Databases Reporting for Week Ending 12/25/21 (Week 51)

IHS Area	# of RPMS Databases Reporting*	# of Facilities Reporting**
NATIONAL	98	153
ALBUQUERQUE	14	20
BEMIDJI	2	3
BILLINGS	10	19
CALIFORNIA	11	17
GREAT PLAINS	7	9
NASHVILLE	21	23
NAVAJO	5	12
OKLAHOMA	17	27
PHOENIX	7	16
PORTLAND	3	4
TUCSON	1	3

* Exporting databases may include data from multiple facilities.

** Includes only facility categories: Hospital, Health Center, Health Station and Health Location

NR = Not Reported