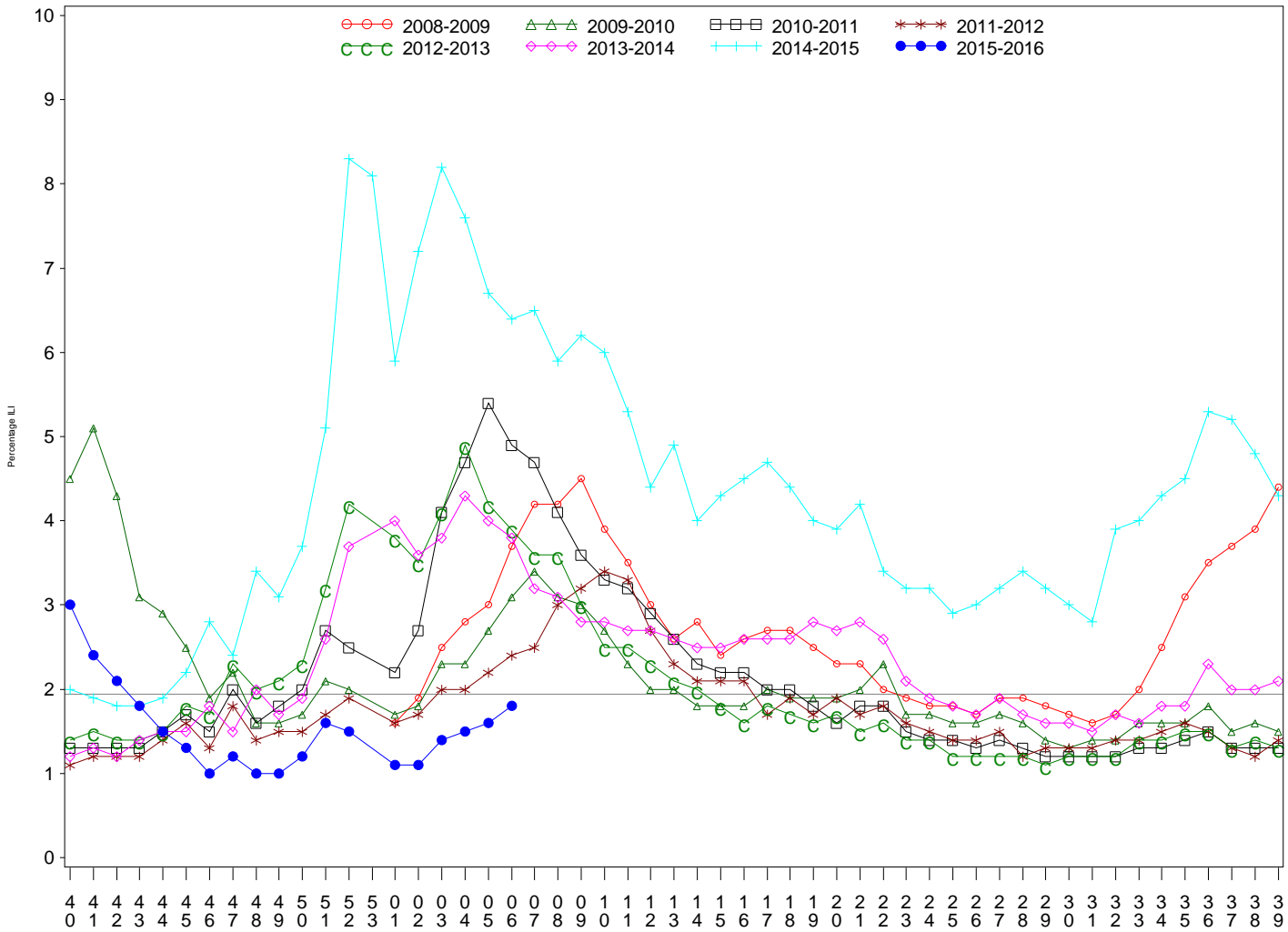




Indian Health Service
 Division of Epidemiology and Disease Prevention
Influenza Surveillance Report
IHS Influenza Awareness System (IIAS)
(Week 6: 2/07/2016 – 2/13/2016)

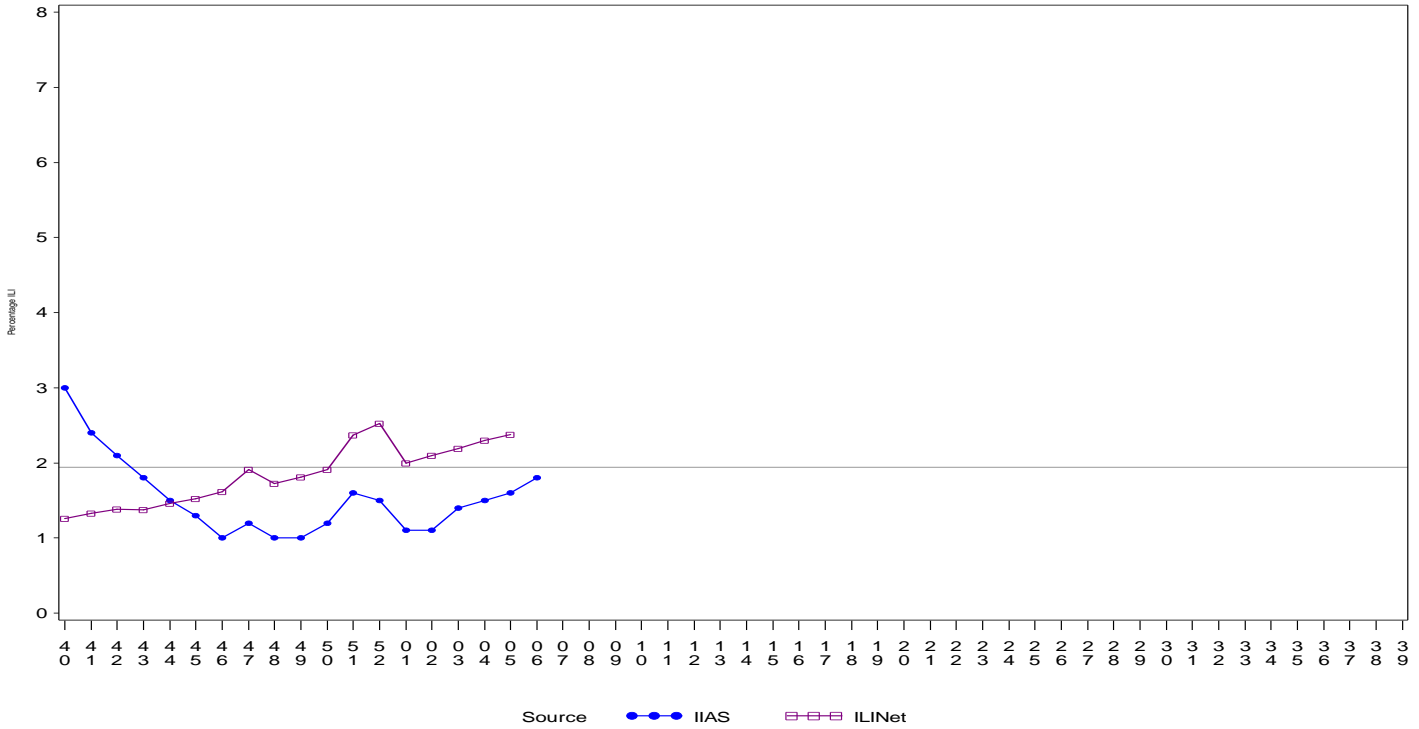
- Influenza-like-illness (ILI) activity in IHS is increasing but remains below the national baseline.
- To date IHS has administered over 359,000 doses of influenza vaccine.
- Overall, 33% of the IHS Active Clinical population received an influenza vaccine this season.

All IHS Areas
 Influenza-Like Illness (ILI) for All Surveillance Years
 Percentage of Visits for ILI per week
 01/04/09 to 02/13/16



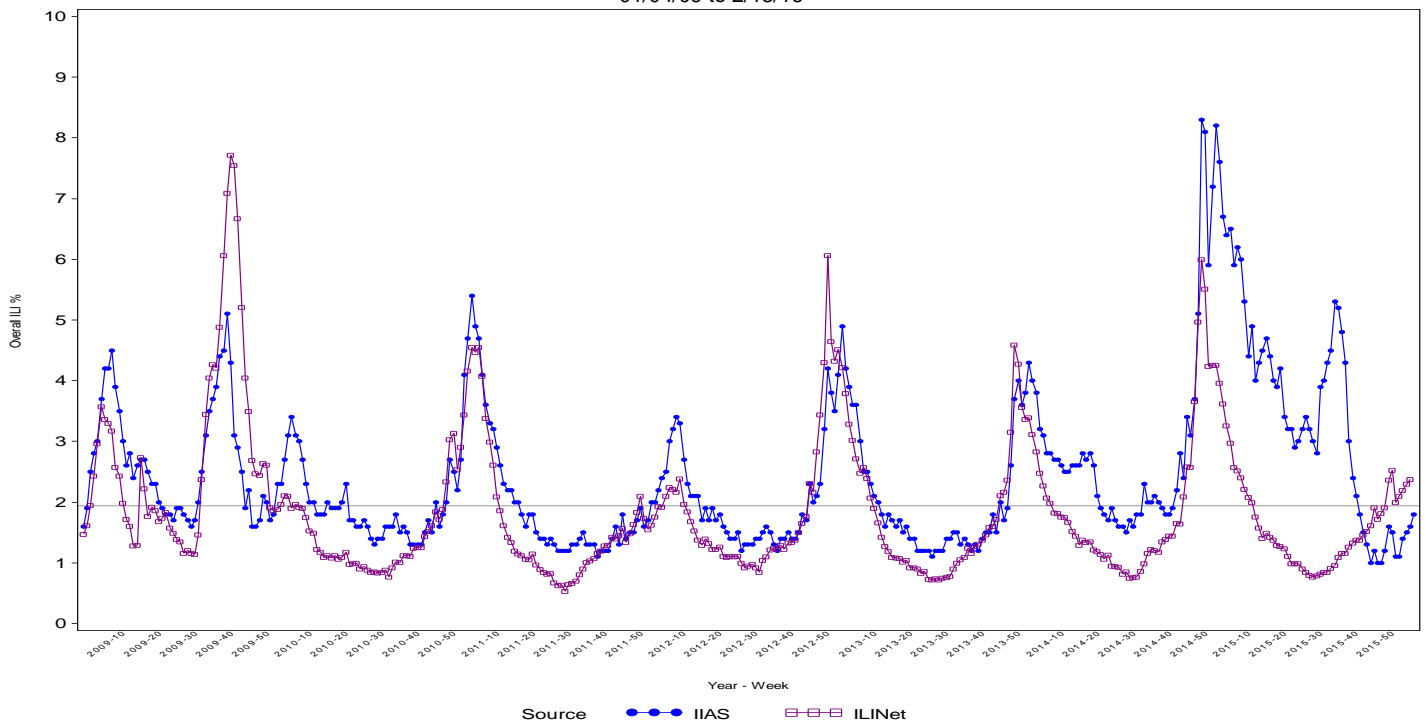
Percentage of ILI visits is number of ILI visits divided by total number of daily visits.
 The horizontal line represents the 2014-2015 baseline. The baseline is the mean percentage of patient visits for ILI during non-influenza weeks for the previous three seasons plus two standard deviations.
 Sources: ILINet - CDC Sentinal Surveillance System for Influenza-Like Illness, IIAS - IHS Influenza Awareness System

Proportion of Outpatient Visits for Influenza-Like Illness (ILI)
 Percent ILI for Flu Year 2015 - 2016
 ILINet vs. IIAS
 10/04/15 to 2/13/16



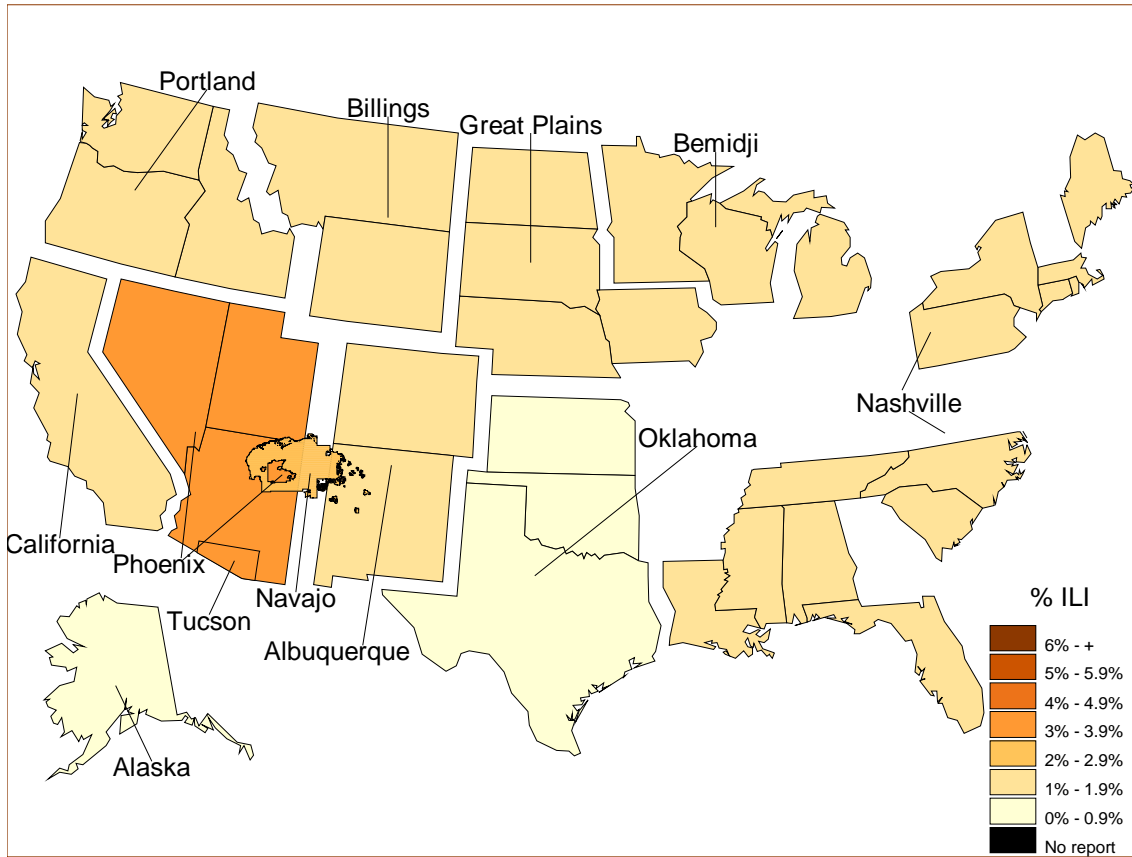
Percentage of ILI visits is number of ILI visits divided by total number of daily visits (outpatient visits).
 The horizontal line represents the 2014-2015 baseline. The baseline is the mean percentage of patient visits for ILI during non-influenza weeks for the previous three seasons plus two standard deviations.

IIAS versus ILINet
 Influenza-Like Illness (ILI) All Surveillance Years - Continuous
 Percentage of Visits for ILI per week
 01/04/09 to 2/13/16



Percentage of ILI visits is number of ILI visits divided by total number of daily visits (outpatient visits).
 The horizontal line represents the 2014-2015 baseline. The baseline is the mean percentage of patient visits for ILI during non-influenza weeks for the previous three seasons plus two standard deviations.

Percentage of Influenza-Like Illness Visits by IHS Area
For Week: 6



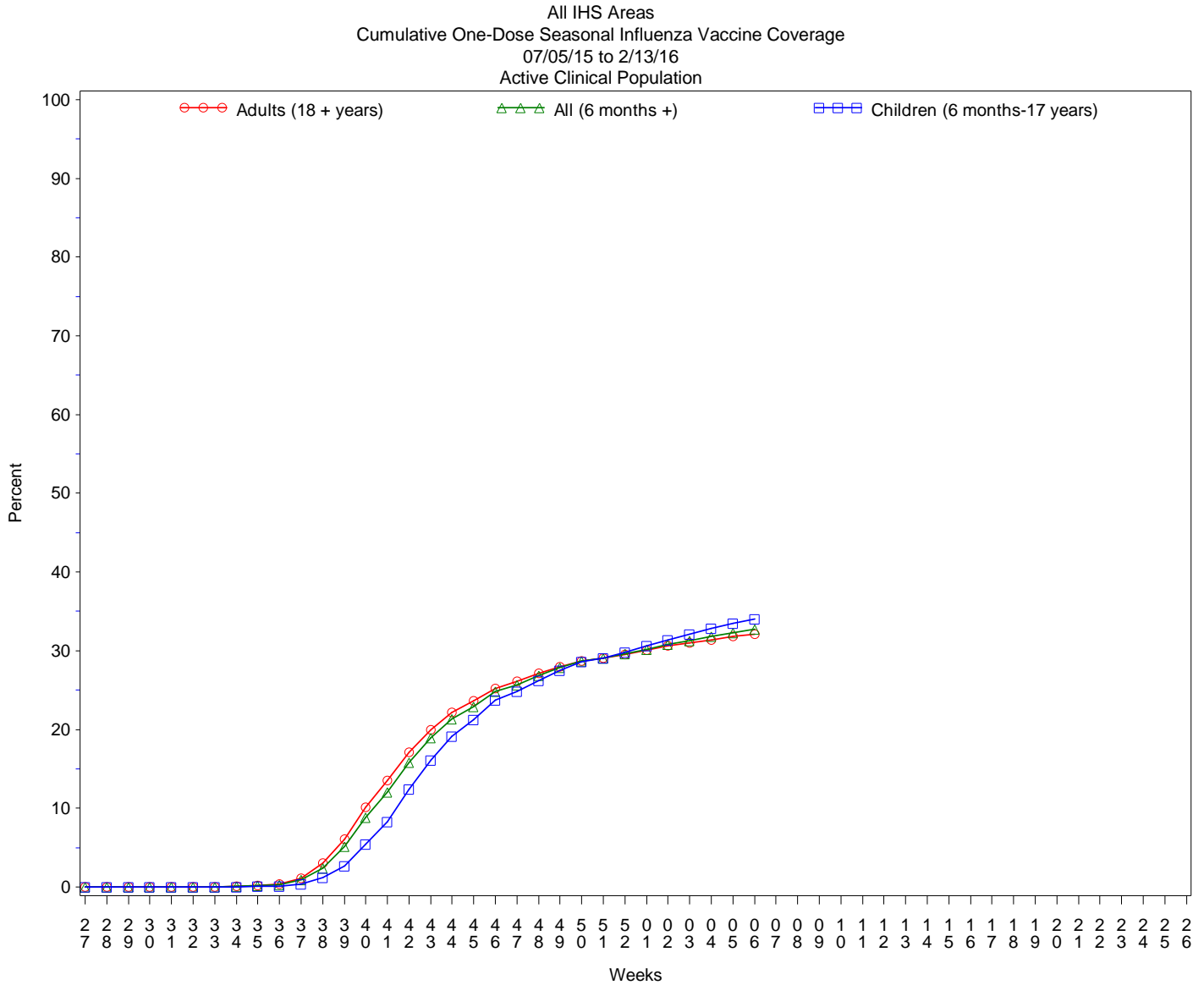
% Visits for ILI Compared to Previous Week

IHS Areas	% in Week 5	% in Week 6
NATIONAL	1.6	1.8
ALASKA	1.1	0.7
ALBUQUERQUE	1.5	1.5
BEMIDJI	1.0	1.5
BILLINGS	1.4	1.6
CALIFORNIA	1.7	1.4
GREAT PLAINS	1.3	1.7
NASHVILLE	1.3	1.6
NAVAJO	2.2	2.2
OKLAHOMA	1.2	0.9
PHOENIX	2.3	3.0
PORTLAND	1.1	1.3
TUCSON	2.6	3.7

Percentage of ILI visits is number of ILI visits divided by total number of daily visits.

IHS Influenza Vaccination Surveillance

- As of 2/13/2016, sites reporting to the IIAS have administered 359,488 doses (1st and 2nd) of seasonal influenza vaccine to Active Clinical patients.



Influenza Vaccination Coverage by Age Group*

Age Group	Active Clinical Population**	Seasonal Flu Vaccine (At Least 1 Dose)***	% Seasonal Flu (At Least 1 Dose)	Seasonal Flu Vaccine (At Least 2 Doses)	% Seasonal Flu (At Least 2 Doses)	Total #Doses Administered****
0 - 5 months	4,902	92	1.9	33	0.7	126
6 - 23 months	24,183	13,578	56.1	3,604	14.9	17,237
2 - 4 years	59,521	18,135	30.5	481	0.8	18,728
5 - 17 years	222,684	72,572	32.6	541	0.2	73,570
18 - 49 years	463,527	118,401	25.5	828	0.2	120,212
50 - 64 years	192,717	76,724	39.8	582	0.3	77,931
65 + years	109,427	50,778	46.4	552	0.5	51,810
Children (6 months-17 years)	306,388	104,285	34.0	4,626	1.5	109,535
Adults (18 + years)	765,671	245,903	32.1	1,962	0.3	249,953
All (6 months +)	1,072,059	350,188	32.7	6,588	0.6	359,488

* Limited to sites that exported both doses administered and active clinical population data.

** Active Clinical is defined as patients who have had at least 2 visits in the last 3 years.

*** Number of unique patients with at least 1 dose, doses deduplicated.

**** Total # Doses Administered = All doses administered to patients including doses not included in coverage calculation due to lack of Active Clinical Population data.

Influenza Vaccination Doses Administered by Influenza Vaccination Type*

Area	INACTIV E CVX CODES*	CVX 88 FLU-NOS**	CVX 111 FLU-LAIV3	CVX 135 FLU-HIGH	CVX 140 FLU-IIV3pf	CVX 141 FLU-IIV3	CVX 144 FLU-DER MAL	CVX 149 FLU-LAIV4	CVX 150 FLU-IIV4pf	CVX 153 FLU-cclIV3	CVX 155 FLU-RIV3	CVX 158 IIV4	CVX 161 IIV4pf -ped	CVX 166	Proc 99.52 Vac Inf	ICD-9 V04.81 Vac Inf	CPT Billing Codes+	Cumulative # of Doses Seasonal Flu
AKA	20	260	3	323	359	1036	3	952	4676	80	.	4307	431	41	.	4	122	12617
ALB	52	197	20	1485	5390	15018	1	2299	1412	1	200	1554	912	9	.	10	378	28938
BEM	178	96	6	347	423	6619	88	972	1641	2	3	892	287	2	.	66	115	11737
BIL	7	230	4	1123	8471	4179	1	1948	3888	.	.	696	460	1	.	15	132	21155
CAO	118	317	7	1377	2454	5771	9	1830	5520	.	1	4730	648	54	.	16	309	23161
GPA	228	876	60	529	5451	16237	1	2083	4236	1	4	4623	1464	5	.	30	93	35921
NSA	2	129	.	242	1438	6595	156	453	3084	1	9	310	80	299	.	8	157	12963
NAV	181	384	6	1008	355	69351	2	1085	10180	1	2	4257	1972	204	.	73	610	89671
OKC	1024	2267	138	2192	1619	32307	39	1858	5284	3	19	2828	1060	444	33	40	261	51416
PHX	22	531	9	2035	10928	19564	16	2388	9405	.	6	766	2483	25	2	42	405	48627
POR	31	652	26	959	2097	11698	4	2227	3667	23	12	3095	407	525	.	95	153	25671
TUC	.	128	1	40	5686	361	2	304	1246	.	.	37	597	1	.	27	80	8510
	1863	6067	280	11660	44671	188736	322	18399	54239	112	256	28095	1080 1	1610	35	426	2815	370387

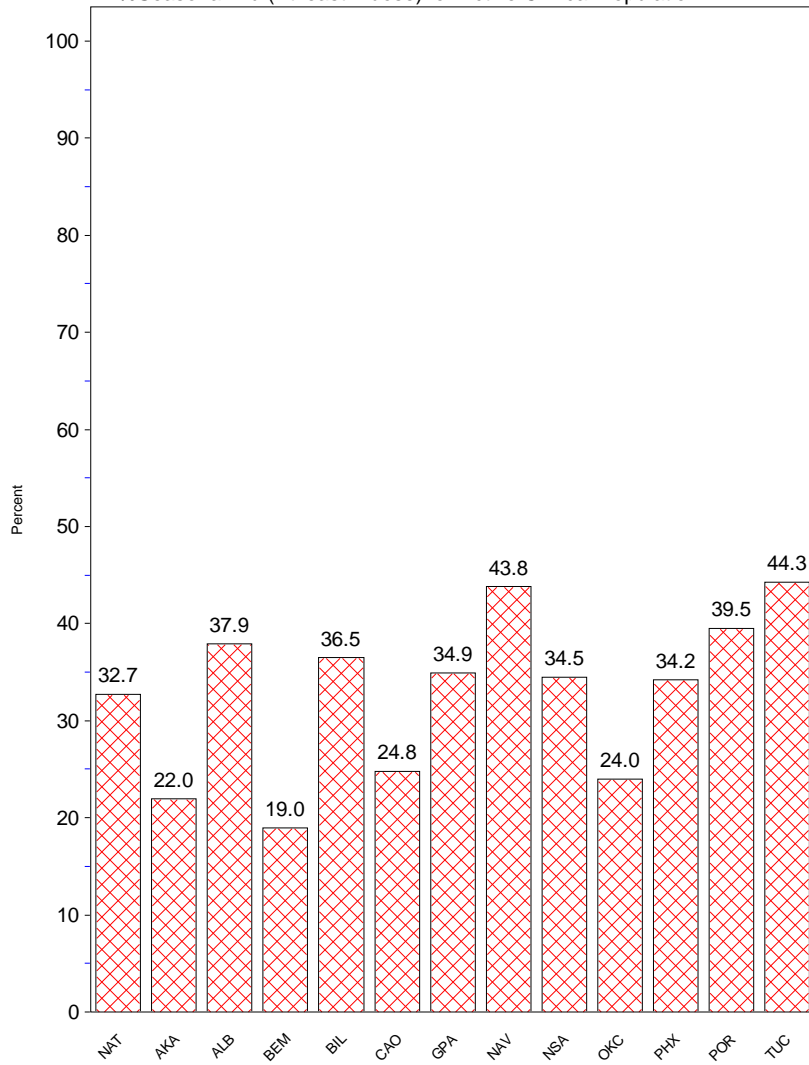
* Inactive CVX Codes 15 (FLU-TIVhx), 16 (FLU-WHOLE), 123 (FLU-H5N1), and 151 (FLU-NasNOS) should not be used to document flu vaccines given this flu season. Doses are NOT deduplicated.

** CVX Code 88 (FLU-NOS) should only be used to document flu vaccines given elsewhere when flu vaccine type is unknown.

+ CPT Flu codes include: 90654-90662, 90672-90673, 90685-90686, 90724, G0008, G8108.

^ ICD9 codes V04.8 and V06.6 are not displayed on this report and are not used in any of the influenza vaccine coverage calculations.

All IHS Areas
Influenza Vaccine Coverage by Age Groups – All (6 mos+)
07/05/15 to 2/13/16
%Seasonal Flu (At least 1 dose) for Active Clinical Population



- This report includes data from the following number of Resource and Patient Management System (RPMS) databases:

IHS Area	# of RPMS Databases Reporting*	# of Facilities Reporting**
NATIONAL	166	316
ALASKA	11	66
ALBUQUERQUE	13	22
BEMIDJI	6	11
BILLINGS	12	18
CALIFORNIA	20	36
GREAT PLAINS	18	32
NASHVILLE	18	22
NAVAJO	8	23
OKLAHOMA	19	26
PHOENIX	18	30
PORTLAND	22	26
TUCSON	1	4

* Exporting databases may include data from multiple facilities.

** Includes only facility categories: Hospital, Health Center, Health Station, Health Location, Alaska Village Clinic.