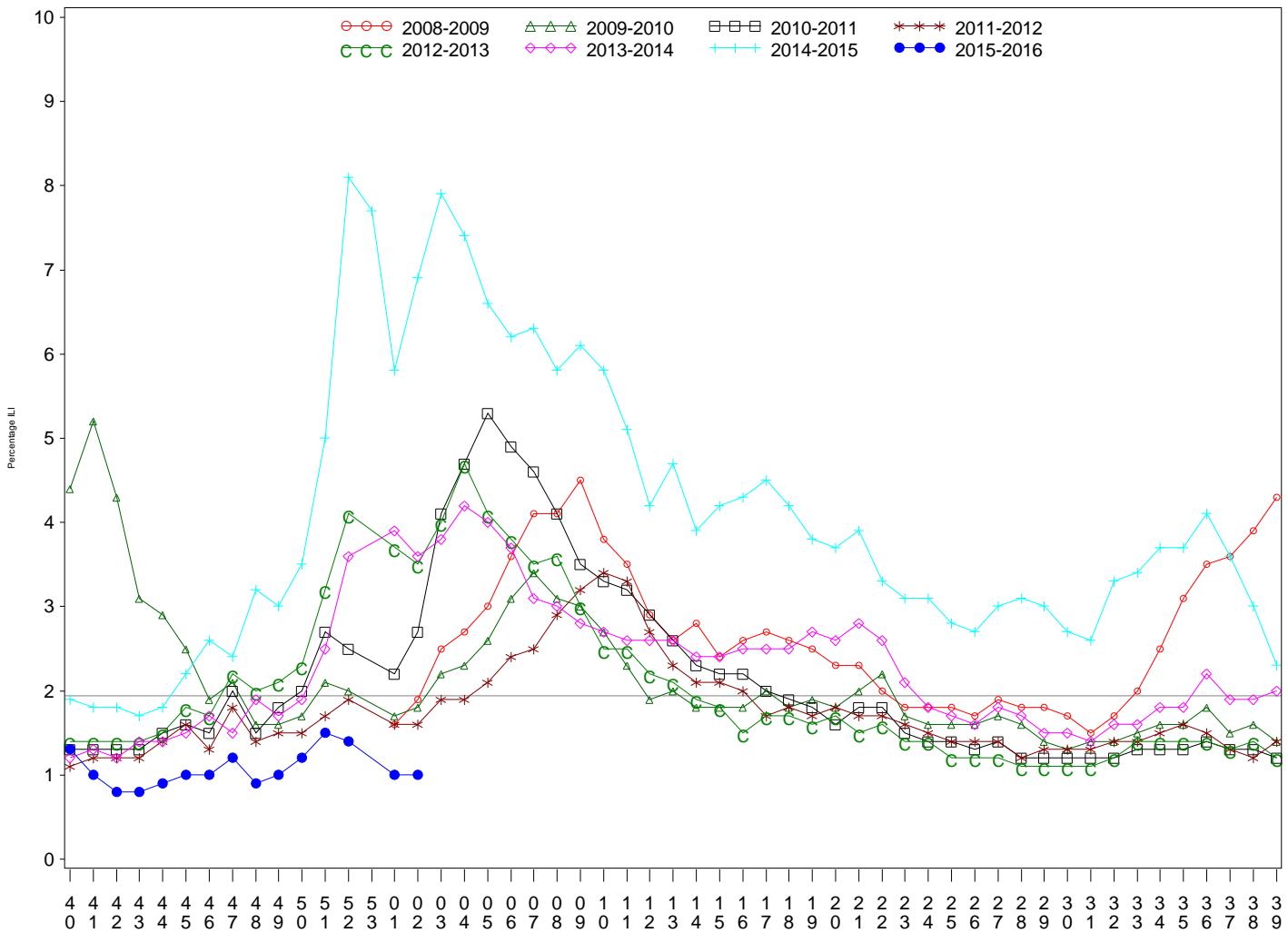




Indian Health Service
 Division of Epidemiology and Disease Prevention
Influenza Surveillance Report
IHS Influenza Awareness System (IIAS)
 (Week 2: 1/10/2016 – 1/16/2016)

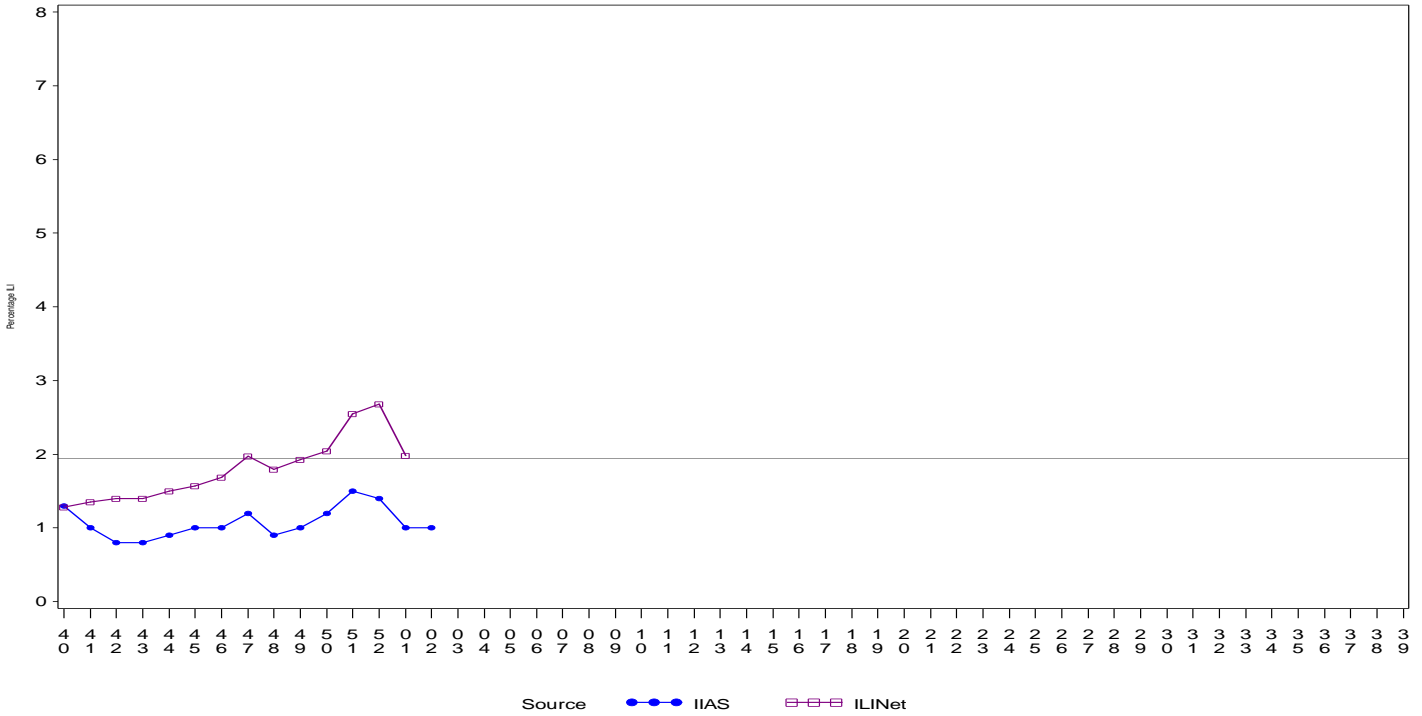
- Influenza-like-illness (ILI) activity in IHS is low, and below the national baseline.
- To date IHS has administered over 329,000 doses of influenza vaccine.
- Overall, 30% of the IHS Active Clinical population received an influenza vaccine this season.

All IHS Areas
 Influenza-Like Illness (ILI) for All Surveillance Years
 Percentage of Visits for ILI per week
 01/04/09 to 01/16/16



Percentage of ILI visits is number of ILI visits divided by total number of daily visits.
 The horizontal line represents the 2014-2015 baseline. The baseline is the mean percentage of patient visits for ILI during non-influenza weeks for the previous three seasons plus two standard deviations.
 Sources: ILINet - CDC Sentinal Surveillance System for Influenza-Like Illness, IIAS - IHS Influenza Awareness System

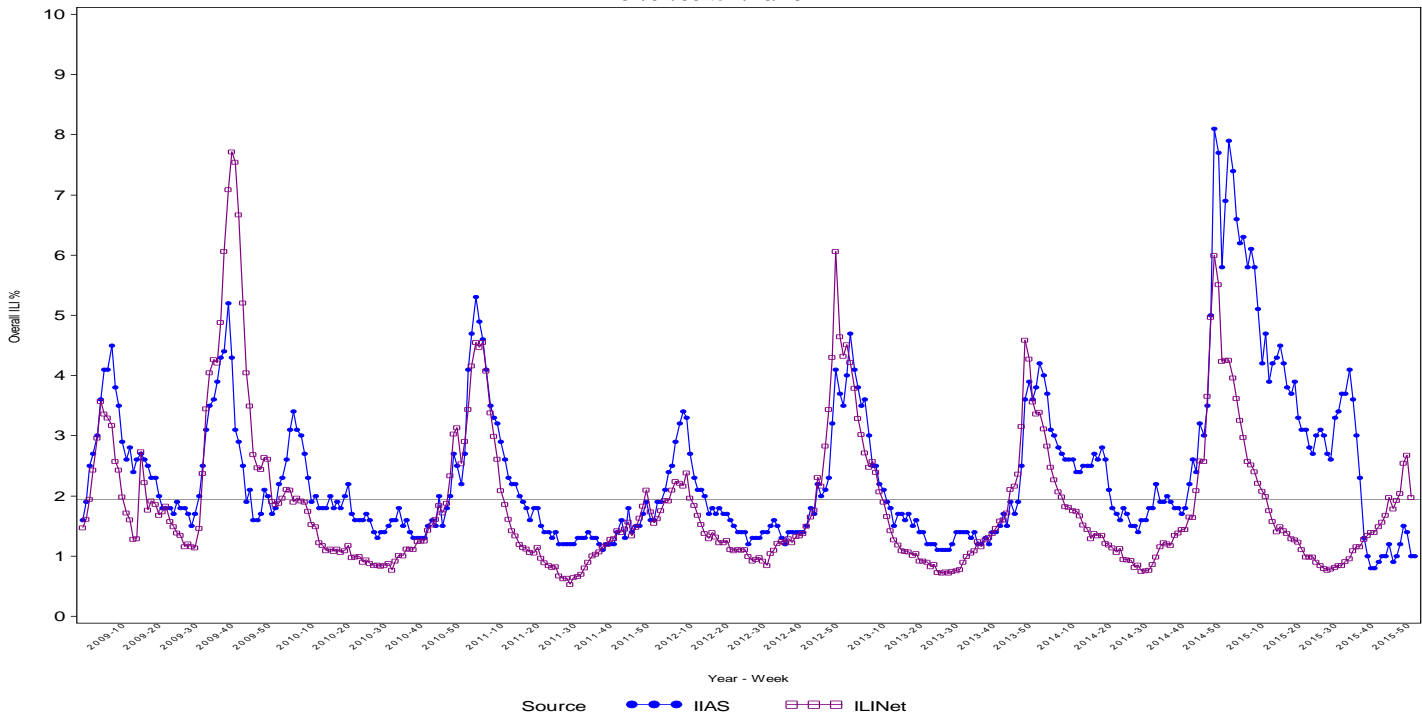
Proportion of Outpatient Visits for Influenza-Like Illness (ILI)
 Percent ILI for Flu Year 2015 - 2016
 ILINet vs. IIAS
 10/04/15 to 1/16/16



Source ●●● IIAS □□□ ILINet

Percentage of ILI visits is number of ILI visits divided by total number of daily visits (outpatient visits).
 The horizontal line represents the 2014-2015 baseline. The baseline is the mean percentage of patient visits for ILI during non-influenza weeks for the previous three seasons plus two standard deviations.

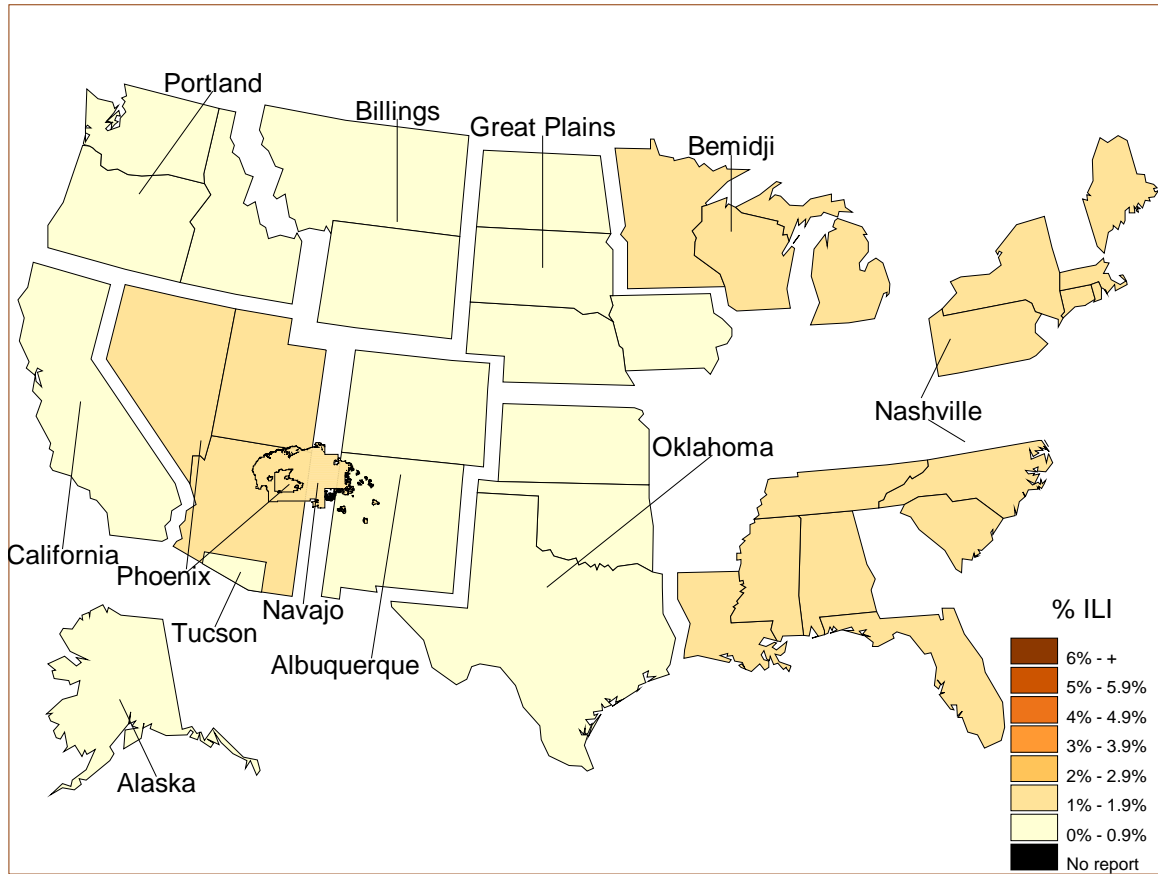
IIAS versus ILINet
 Influenza-Like Illness (ILI) All Surveillance Years - Continuous
 Percentage of Visits for ILI per week
 01/04/09 to 1/16/16



Source ●●● IIAS □□□ ILINet

Percentage of ILI visits is number of ILI visits divided by total number of daily visits (outpatient visits).
 The horizontal line represents the 2014-2015 baseline. The baseline is the mean percentage of patient visits for ILI during non-influenza weeks for the previous three seasons plus two standard deviations.

Percentage of Influenza-Like Illness Visits by IHS Area
For Week: 2



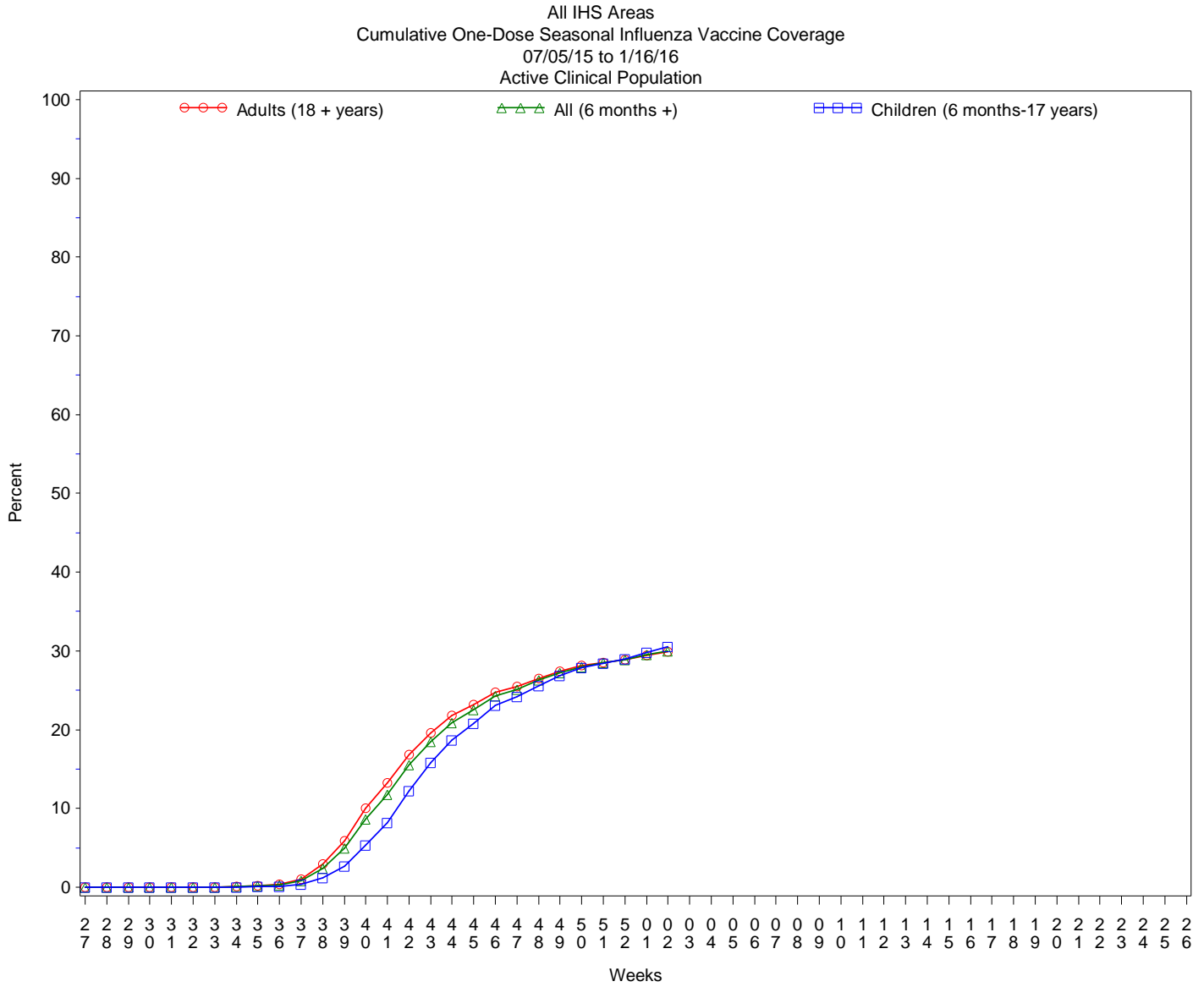
% Visits for ILI Compared to Previous Week

IHS Areas	% in Week 1	% in Week 2
NATIONAL	1.0	1.0
ALASKA	0.6	0.8
ALBUQUERQUE	0.5	0.6
BEMIDJI	0.7	1.0
BILLINGS	0.9	0.8
CALIFORNIA	0.7	0.6
GREAT PLAINS	0.9	0.8
NASHVILLE	1.0	1.6
NAVAJO	1.5	1.2
OKLAHOMA	0.9	0.6
PHOENIX	1.2	1.3
PORTLAND	0.7	0.9
TUCSON	1.3	0.7

Percentage of ILI visits is number of ILI visits divided by total number of daily visits.

IHS Influenza Vaccination Surveillance

- As of 1/16/2016, sites reporting to the IAS have administered 329,879 doses (1st and 2nd) of seasonal influenza vaccine to Active Clinical patients.



Influenza Vaccination Coverage by Age Group*

Age Group	Active Clinical Population**	Seasonal Flu Vaccine (At Least 1 Dose)***	% Seasonal Flu (At Least 1 Dose)	Seasonal Flu Vaccine (At Least 2 Doses)	% Seasonal Flu (At Least 2 Doses)	Total #Doses Administered****
0 - 5 months	4,867	78	1.6	31	0.6	110
6 - 23 months	24,121	11,553	47.9	2,391	9.9	13,987
2 - 4 years	59,674	15,788	26.5	308	0.5	16,197
5 - 17 years	223,721	66,409	29.7	443	0.2	67,276
18 - 49 years	464,860	108,950	23.4	643	0.1	110,487
50 - 64 years	192,789	71,960	37.3	473	0.2	73,004
65 + years	109,057	48,022	44.0	456	0.4	48,928
Children (6 months-17 years)	307,516	93,750	30.5	3,142	1.0	97,460
Adults (18 + years)	766,706	228,932	29.9	1,572	0.2	232,419
All (6 months +)	1,074,222	322,682	30.0	4,714	0.4	329,879

* Limited to sites that exported both doses administered and active clinical population data.

** Active Clinical is defined as patients who have had at least 2 visits in the last 3 years.

*** Number of unique patients with at least 1 dose, doses deduplicated.

**** Total # Doses Administered = All doses administered to patients including doses not included in coverage calculation due to lack of Active Clinical Population data.

Influenza Vaccination Doses Administered by Influenza Vaccination Type*

Area	INACTIVE CVX CODES*	CVX 88 FLU-NOS**	CVX 111 FLU-LAIV3	CVX 135 FLU-HIGH	CVX 140 FLU-IIV3pf	CVX 141 FLU-IIV3	CVX 144 FLU-DER-MAL	CVX 149 FLU-LAIV4	CVX 150 FLU-IIV4pf	CVX 153 FLU-cclIV3	CVX 155 FLU-RIV3	CVX 158 IIV4	CVX 161 IIV4pf -ped	CVX 166	Proc 99.52 Vac Inf	ICD-9 V04.81 Vac Inf	CPT Billing Codes+	Cumulative # of Doses Seasonal Flu
AKA	16	232	3	272	342	953	3	827	4154	78	.	3673	362	21	.	4	118	11058
ALB	36	151	9	1440	4859	13899	1	2200	1197	1	198	1417	751	9	.	11	370	26549
BEM	166	64	6	338	405	6015	88	775	1495	2	3	790	251	2	.	65	107	10572
BIL	6	186	4	1097	7923	3922	1	1768	3522	.	.	644	373	1	.	15	120	19582
CAO	106	283	7	1337	2305	5275	9	1618	5118	.	1	4467	550	36	.	16	287	21415
GPA	210	616	49	515	5105	14945	1	1745	3744	1	4	4241	1163	5	.	31	93	32468
NSA	2	102	.	233	1386	6340	149	410	2954	1	9	258	75	290	.	8	150	12367
NAV	150	290	2	925	322	65102	1	983	9011	1	2	4056	1748	103	.	72	581	83349
OKC	922	1636	117	2118	1558	29982	33	1698	4711	2	17	2526	901	403	33	40	232	46929
PHX	16	462	6	1944	10087	18446	14	2188	8444	.	6	677	2078	20	2	42	386	44818
POR	27	583	21	921	2009	10683	4	1973	3203	19	11	2794	333	485	.	94	145	23305
TUC	.	124	1	31	5323	359	2	255	1115	.	.	16	488	1	.	27	77	7819
	1657	4729	225	11171	41624	175921	306	16440	48668	105	251	25559	9073	1376	35	425	2666	340231

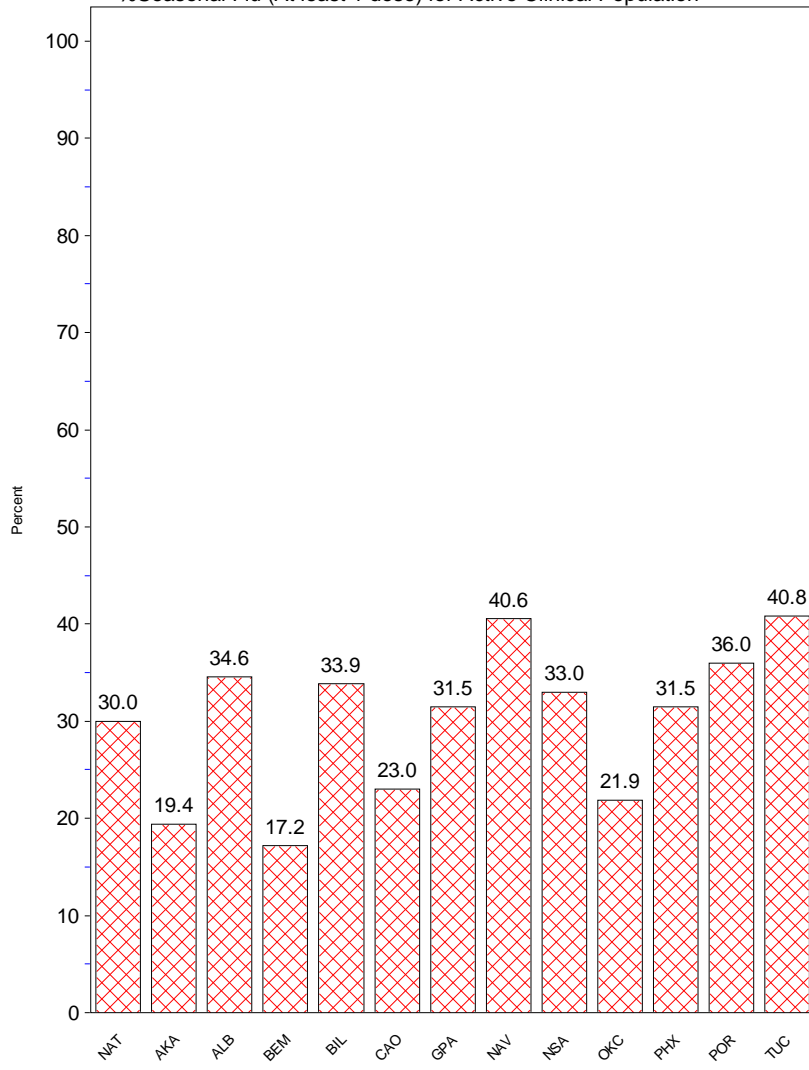
* Inactive CVX Codes 15 (FLU-TIVhx), 16 (FLU-WHOLE), 123 (FLU-H5N1), and 151 (FLU-NasNOS) should not be used to document flu vaccines given this flu season. Doses are NOT deduplicated.

** CVX Code 88 (FLU-NOS) should only be used to document flu vaccines given elsewhere when flu vaccine type is unknown.

+ CPT Flu codes include: 90654-90662, 90672-90673, 90685-90686, 90724, G0008, G8108.

^ ICD9 codes V04.8 and V06.6 are not displayed on this report and are not used in any of the influenza vaccine coverage calculations.

All IHS Areas
Influenza Vaccine Coverage by Age Groups – All (6 mons+)
07/05/15 to 1/16/16
%Seasonal Flu (At least 1 dose) for Active Clinical Population



- This report includes data from the following number of Resource and Patient Management System (RPMS) databases:

IHS Area	# of RPMS Databases Reporting*	# of Facilities Reporting**
NATIONAL	159	312
ALASKA	11	66
ALBUQUERQUE	13	22
BEMIDJI	5	9
BILLINGS	13	24
CALIFORNIA	20	35
GREAT PLAINS	17	31
NASHVILLE	18	22
NAVAJO	8	23
OKLAHOMA	14	20
PHOENIX	18	31
PORTLAND	21	25
TUCSON	1	4

* Exporting databases may include data from multiple facilities.

** Includes only facility categories: Hospital, Health Center, Health Station, Health Location, Alaska Village Clinic.