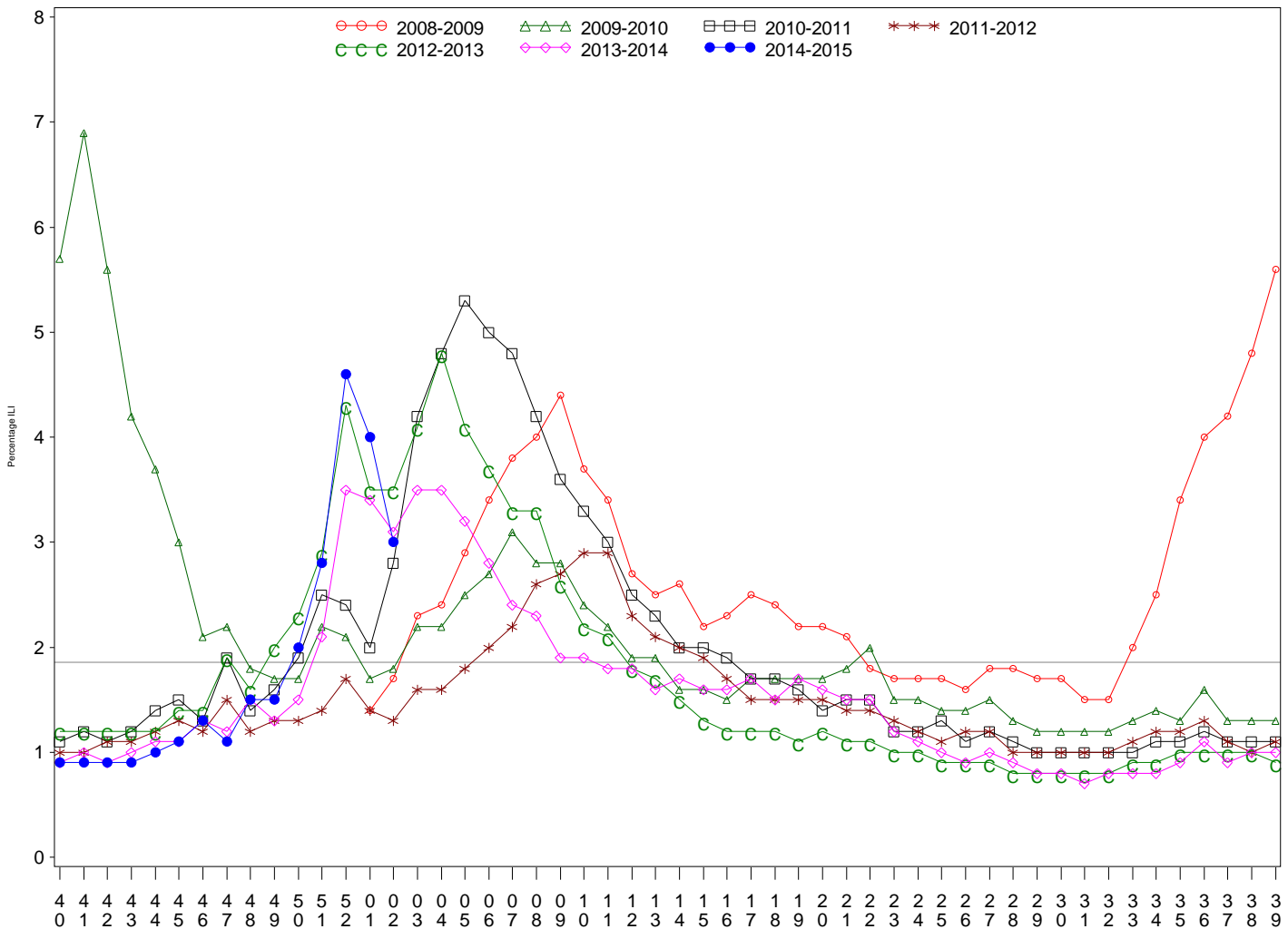




**Indian Health Service**  
 Division of Epidemiology and Disease Prevention  
**Influenza Surveillance Report**  
*IHS Influenza Awareness System (IIAS)*  
**#15 (Week 2: 6/29/2014 – 1/10/2015)**

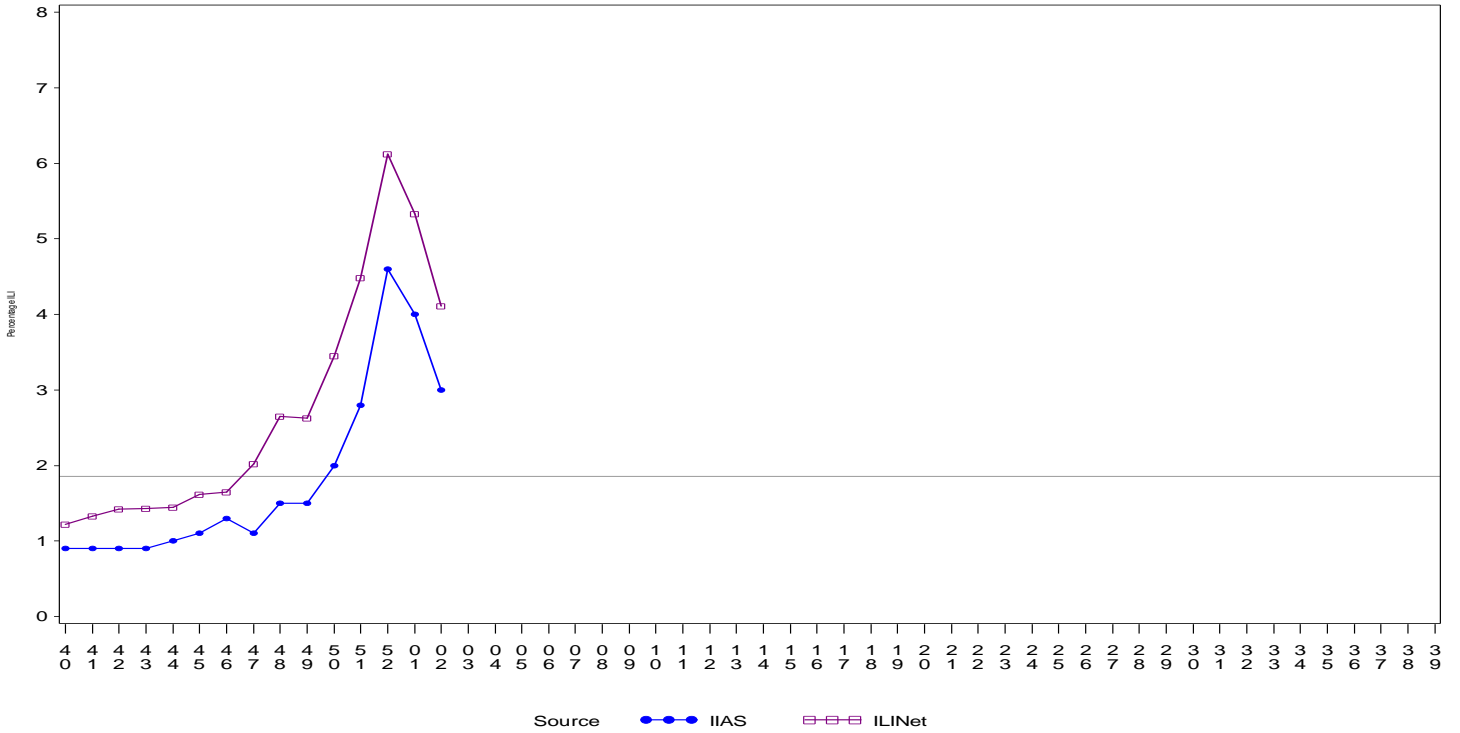
- Influenza-like-illness (ILI) activity in IHS and the U.S. is high.
- To date IHS has administered over 397,000 influenza vaccines this season.
- Overall, 32.7% of the IHS Active Clinical population received an influenza vaccine this season.

All IHS Areas  
 Influenza-Like Illness (ILI) for All Surveillance Years  
 Percentage of Visits for ILI per week  
 01/04/09 to 1/10/15



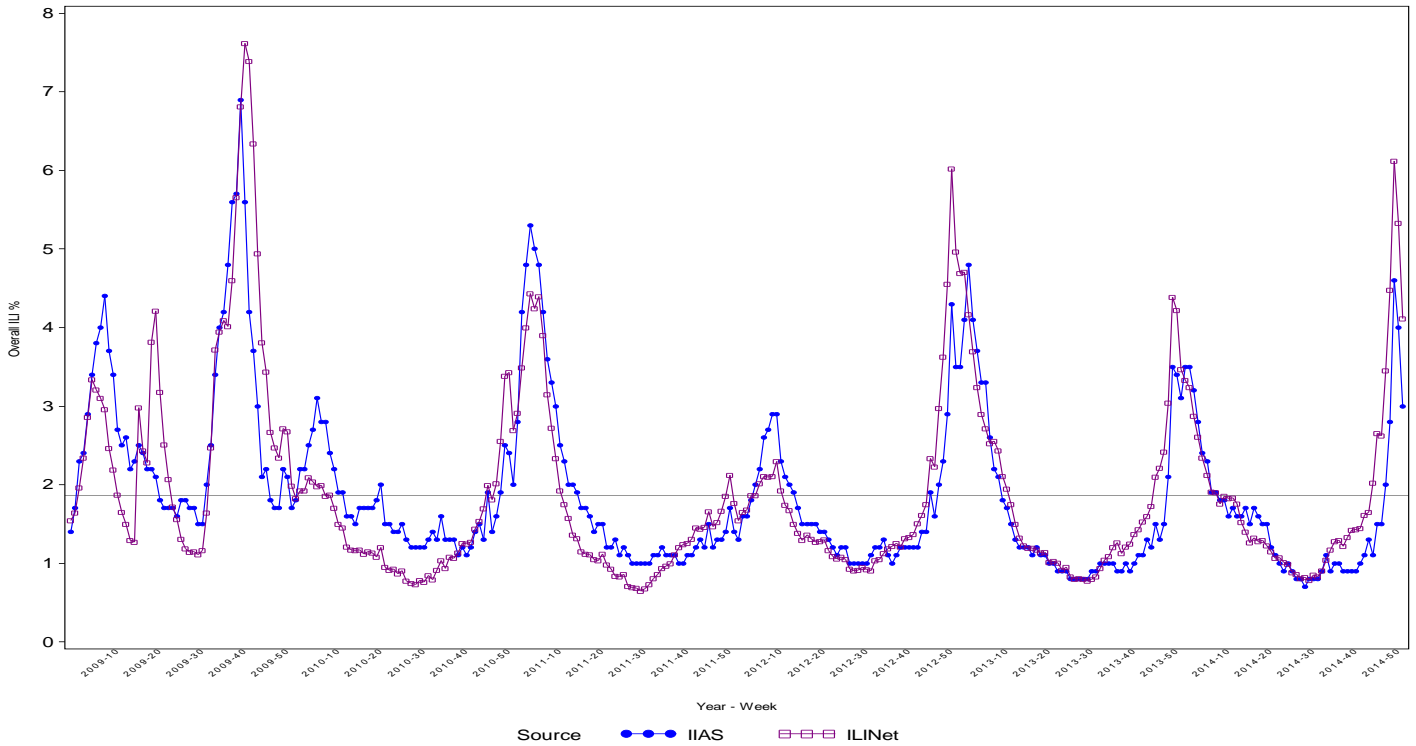
Percentage of ILI visits is number of ILI visits divided by total number of daily visits. The horizontal line represents the 2013-2014 baseline. The baseline is the mean percentage of patient visits for ILI during non-influenza weeks for the previous three seasons plus two standard deviations.

Proportion of Outpatient Visits for Influenza-Like Illness (ILI)  
 Percent ILI for FluYear 2014 - 2015  
 ILINet vs. IIAS  
 09/28/14 to 1/10/15



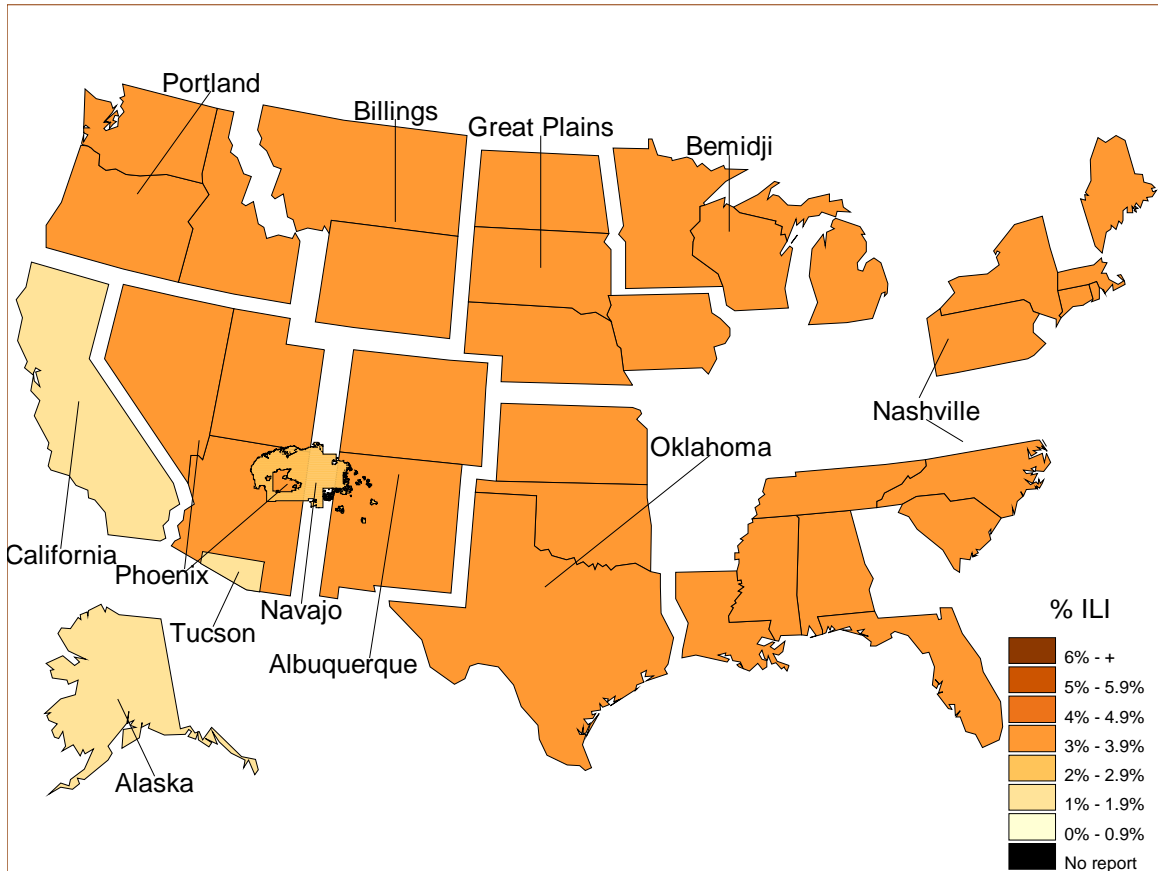
Percentage of ILI visits is number of ILI visits divided by total number of daily visits (outpatient visits).  
 The horizontal line represents the 2013-2014 baseline. The baseline is the mean percentage of patient visits for ILI during non-influenza weeks for the previous three seasons plus two standard deviations.  
 Sources: ILINet - CDC Sentinal Surveillance System for Influenza-Like Illness, IIAS - IHS Influenza Awareness System

IIAS versus ILINet  
 Influenza-Like Illness (ILI) All Surveillance Years - Continuous  
 Percentage of Visits for ILI per week  
 01/04/09 to 1/10/15



Percentage of ILI visits is number of ILI visits divided by total number of daily visits (outpatient visits).

Percentage of Influenza-Like Illness Visits by IHS Area  
For Week: 2



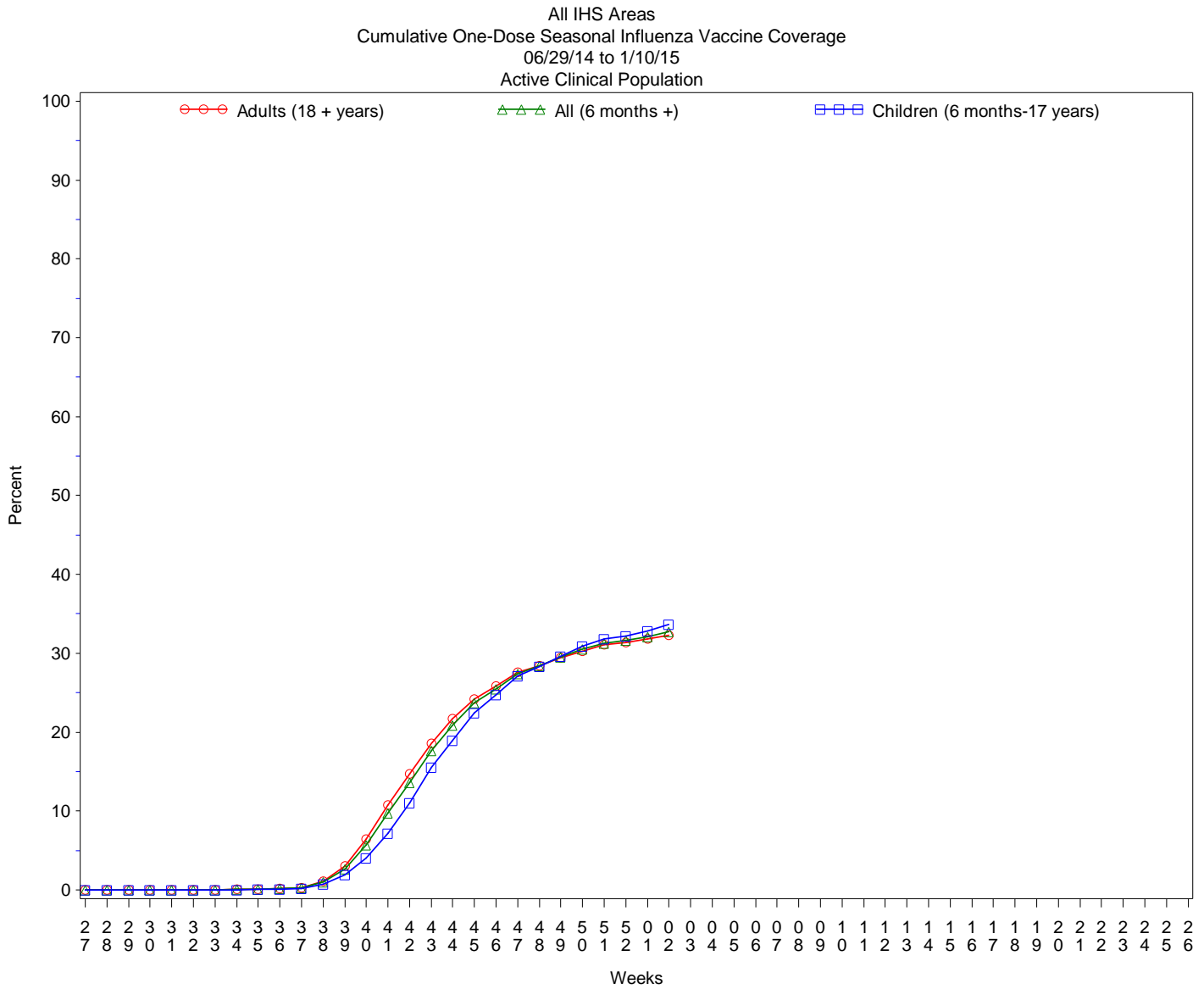
% Visits for ILI Compared to Previous Week

IHS Areas	% in Week 1	% in Week 2
NATIONAL	4.0	3.0
ALASKA	1.3	1.2
ALBUQUERQUE	4.4	3.2
BEMIDJI	4.9	3.8
BILLINGS	3.7	3.0
CALIFORNIA	1.2	1.6
GREAT PLAINS	3.2	3.1
NASHVILLE	6.0	3.2
NAVAJO	3.3	2.9
OKLAHOMA	5.6	3.4
PHOENIX	3.7	3.2
PORTLAND	4.2	3.1
TUCSON	2.0	1.8

Percentage of ILI visits is number of ILI visits divided by total number of daily visits.

## IHS Influenza Vaccination Surveillance

- As of 1/10/2015, sites reporting to the IIAS have administered 397,319 doses (1st and 2nd) of seasonal influenza vaccine to Active Clinical patients.



## Influenza Vaccination Coverage by Age Group\*

Age Group	Active Clinical Population**	Seasonal Flu Vaccine (At Least 1 Dose)***	% Seasonal Flu (At Least 1 Dose)	Seasonal Flu Vaccine (At Least 2 Doses)	% Seasonal Flu (At Least 2 Doses)	Total #Doses Administered****
0 - 5 months	5,443	106	1.9	4	0.1	110
6 - 23 months	27,004	13,841	51.3	2,730	10.1	16,610
2 - 4 years	65,808	19,868	30.2	381	0.6	20,322
5 - 17 years	246,478	80,777	32.8	762	0.3	81,845
18 - 49 years	521,771	131,161	25.1	1,427	0.3	133,104
50 - 64 years	209,657	85,763	40.9	945	0.5	87,091
65 + years	116,979	57,265	49.0	725	0.6	58,347
Children (6 months-17 years)	339,290	114,486	33.7	3,873	1.1	118,777
Adults (18 + years)	848,407	274,189	32.3	3,097	0.4	278,542
All (6 months +)	1,187,697	388,675	32.7	6,970	0.6	397,319

\* Limited to sites that exported both doses administered and active clinical population data.

\*\* Active Clinical is defined as patients who have had at least 2 visits in the last 3 years.

\*\*\* Number of unique patients with at least 1 dose.

\*\*\*\* Total # Doses Administered = All doses administered to patients including doses not included in coverage calculation due to lack of Active Clinical Population data.

## Influenza Vaccination Doses Administered by Influenza Vaccination Type\*

Area	Inactive CVX Codes*	CVX 88 FLU-NOS**	CVX 111 FLU-LAIV3	CVX 135 FLU-HIGH	CVX 140 FLU-IIV3pf	CVX 141 FLU-IIV3	CVX 144 FLU-Dermal	CVX 149 FLU-LAIV4	CVX 150 FLU-IIV4pf	CVX 153 FLU-cclIV3	CVX 155 FLU-RIV3	CVX 158 IIV4	CVX 161 IIV4pf-ped	Proc 99.52 Vac Inf	ICD-9 V04.81 Vac Inf	CPT Billing Codes+	Cumulative # of Doses Seasonal Flu
AKA	54	140	8	347	33	4188	.	846	2505	113	3	4278	.	1	182	143	12841
ALB	125	319	15	1085	427	14969	242	2653	5742	1	1	2499	54	.	127	205	28464
BEM	154	293	61	374	676	8224	34	1327	1970	3	1	583	9	.	502	91	14302
BIL	112	180	7	937	262	5050	1	2182	10550	1	.	954	.	1	106	139	20482
CAO	128	248	5	1020	1439	13545	523	2207	3659	1	2	1381	34	.	362	429	24983
GPA	46	210	14	481	442	15440	45	3359	7650	3	3	4950	21	1	1223	61	33949
NSA	311	163	1	159	229	6517	423	689	3374	.	6	409	1	26	178	230	12716
NAV	175	425	25	438	4679	70285	.	4373	7207	2	1	6078	200	3	517	649	95057
OKC	192	3098	111	3375	248	55182	377	5444	22828	14	4	3874	3	266	1028	200	96244
PHX	89	573	8	1544	310	17888	103	4517	19842	2	4	2222	31	7	455	554	48149
POR	195	701	105	782	1281	11656	318	2651	5195	17	13	4359	123	.	345	316	28057
TUC	.	37	2	12	16	632	1	381	6931	.	.	1017	.	1	328	23	9381
	<b>1581</b>	<b>6387</b>	<b>362</b>	<b>10554</b>	<b>10042</b>	<b>223576</b>	<b>2067</b>	<b>30629</b>	<b>97453</b>	<b>157</b>	<b>38</b>	<b>32604</b>	<b>476</b>	<b>306</b>	<b>5353</b>	<b>3040</b>	<b>424625</b>

\* Inactive CVX Codes 15 (FLU-TIVhx), 16 (FLU-WHOLE), 123 (FLU-H5N1), and 151 (FLU-NasNOS) should not be used to document flu vaccines given this flu season.

\*\* CVX Code 88 (FLU-NOS) should only be used to document flu vaccines given elsewhere when flu vaccine type is unknown.

+ CPT Flu codes include: 90654-90662, 90672-90673, 90685-90686, 90724, G0008, G8108.

^ ICD9 codes V04.8 and V06.6 are not displayed on this report and are not used in any of the influenza vaccine coverage calculations.

- This report includes data from the following number of Resource and Patient Management System (RPMS) databases:

<b>IHS Area</b>	<b># of RPMS Databases Reporting*</b>	<b># of Facilities Reporting**</b>
NATIONAL	191	412
ALASKA	10	66
ALBUQUERQUE	15	25
BEMIDJI	14	21
BILLINGS	13	28
CALIFORNIA	27	53
GREAT PLAINS	17	31
NASHVILLE	19	26
NAVAJO	8	31
OKLAHOMA	21	49
PHOENIX	19	37
PORTLAND	26	35
TUCSON	2	10

\* Exporting databases may include data from multiple facilities.

\*\* Includes only facility categories: Hospital, Health Center, Health Station, Health Location, Alaska Village Clinic.