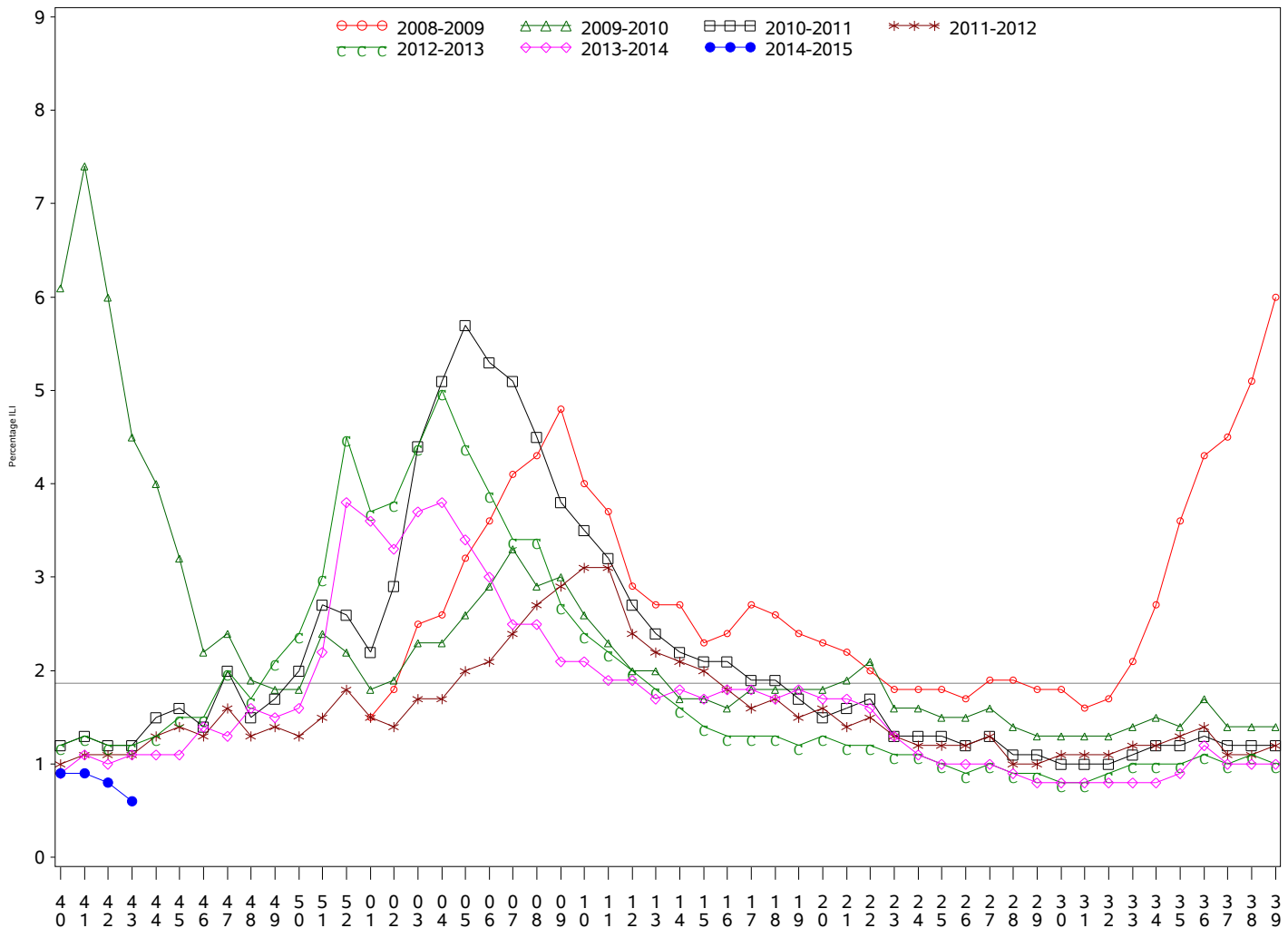




Indian Health Service
 Division of Epidemiology and Disease Prevention
Influenza Surveillance Report
IHS Influenza Awareness System (IIAS)
#4 (Week 43: 6/29/2014 – 10/25/2014)

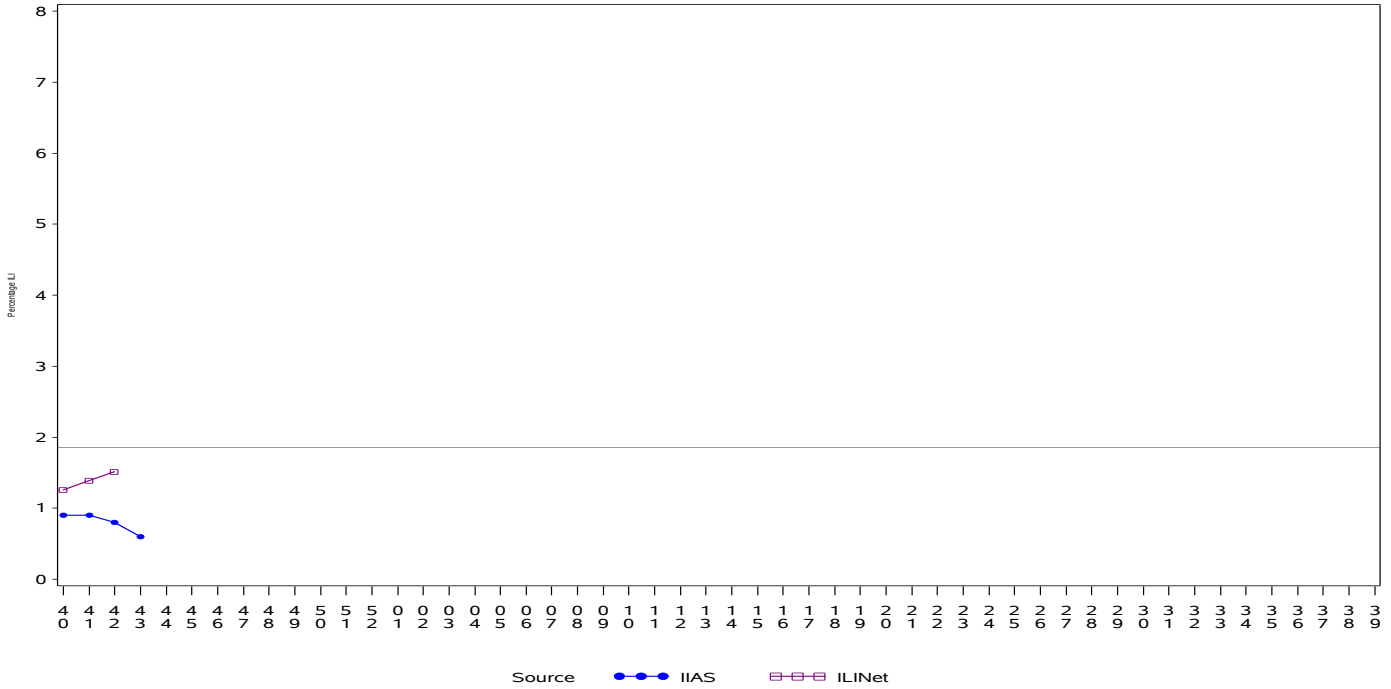
- Overall influenza-like-illness (ILI) activity in IHS and the U.S. is low.
- To date IHS has administered over 184,000 influenza vaccines this season.
- Overall, 15.6% of the IHS Active Clinical population received an influenza vaccine this season.

All IHS Areas
Influenza-Like Illness (ILI) for All Surveillance Years
Percentage of Visits for ILI per week
01/04/09 to 10/25/14



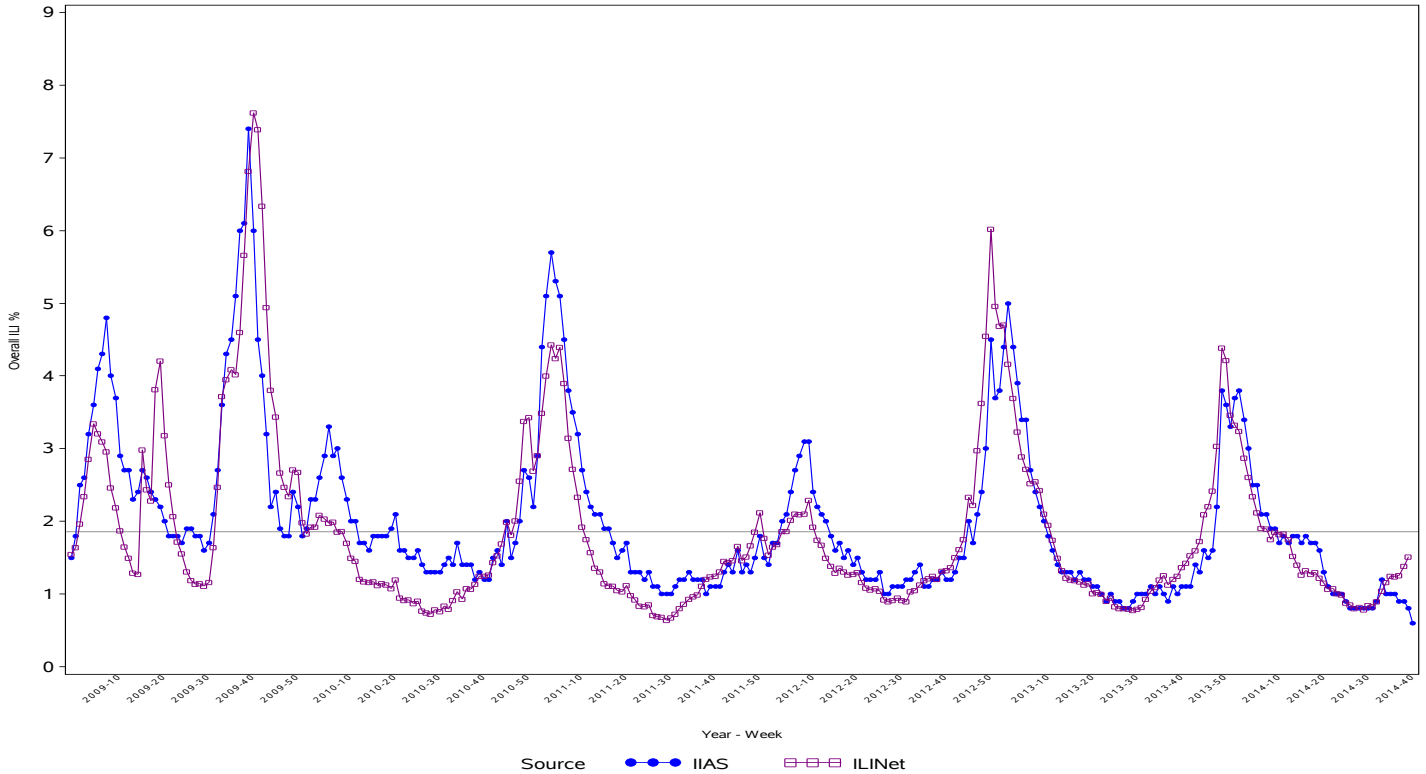
Percentage of ILI visits is number of ILI visits divided by total number of daily visits.
 The horizontal line represents the 2013-2014 baseline. The baseline is the mean percentage of patient visits for ILI during non-influenza weeks for the previous three seasons plus two standard deviations.

Proportion of Outpatient Visits for Influenza-Like Illness (ILI)
Percent ILI for FluYear 2014 - 2015
ILINet vs. IIAS
09/28/14 to 10/25/14



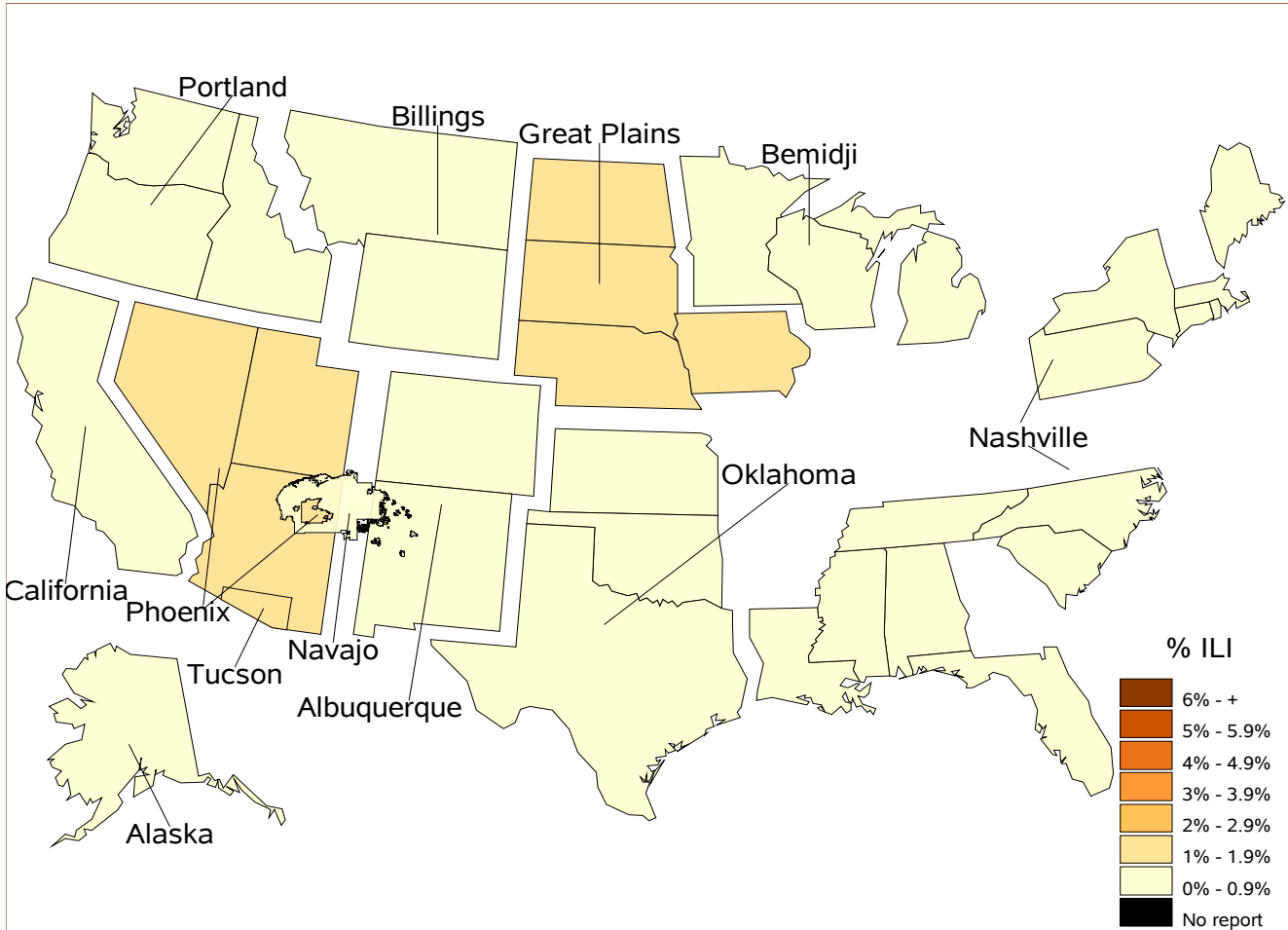
Percentage of ILI visits is number of ILI visits divided by total number of daily visits (outpatient visits).
 The horizontal line represents the 2013-2014 baseline. The baseline is the mean percentage of patient visits for ILI during non-influenza weeks for the previous three seasons plus two standard deviations.
 Sources: ILINet - CDC Sentinel Surveillance System for Influenza-Like Illness, IIAS - IHS Influenza Awareness System

IAS versus ILINet
Influenza-Like Illness (ILI) All Surveillance Years - Continuous
Percentage of Visits for ILI per week
01/04/09 to 10/25/14



Percentage of ILI visits is number of ILI visits divided by total number of daily visits (outpatient visits).

**Percentage of Influenza-Like Illness Visits by Region
For Week: 43**



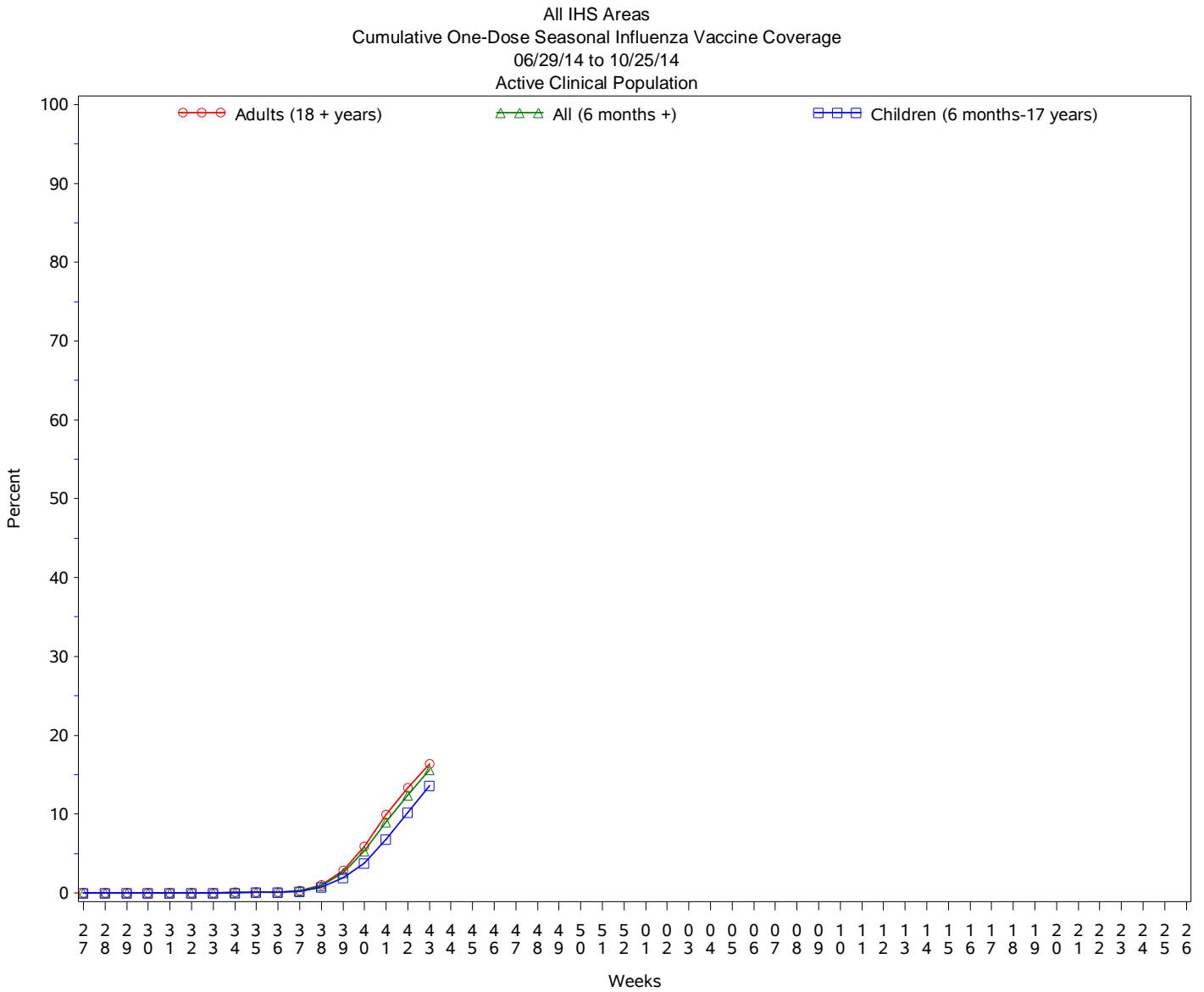
% Visits for ILI Compared to Previous Week

IHS Areas	% in Week 42	% in Week 43
NATIONAL	0.8	0.6
ALASKA	1.1	0.7
ALBUQUERQUE	0.5	0.5
BEMIDJI	0.5	0.3
BILLINGS	0.7	0.5
CALIFORNIA	0.4	0.4
GREAT PLAINS	1.6	1.1
NASHVILLE	1.0	0.8
NAVAJO	0.8	0.6
OKLAHOMA	0.5	0.4
PHOENIX	1.5	1.2
PORTLAND	0.5	0.5
TUCSON	1.1	1.5

Percentage of ILI visits is number of ILI visits divided by total number of daily visits.

IHS Influenza Vaccination* Surveillance

- As of 10/25/2014, sites reporting to the IIAS have administered 184,481 doses (1st and 2nd) of seasonal influenza vaccine to Active Clinical patients.



Influenza Vaccination Coverage by Age Group*

Age Group	Active Clinical Population**	Seasonal Flu Vaccine (At Least 1 Dose)***	% Seasonal Flu (At Least 1 Dose)	Seasonal Flu Vaccine (At Least 2 Doses)	% Seasonal Flu (At Least 2 Doses)	Total #Doses Administered****
0 - 5 months	5,366	39	0.7	4	0.1	43
6 - 23 months	27,144	4,929	18.2	54	0.2	4,991
2 - 4 years	65,543	8,171	12.5	34	0.1	8,228
5 - 17 years	244,146	32,554	13.3	139	0.1	32,817
18 - 49 years	516,381	62,304	12.1	318	0.1	62,896
50 - 64 years	205,844	43,657	21.2	259	0.1	44,114
65 + years	114,823	31,009	27.0	217	0.2	31,435
Children (6 months-17 years)	336,833	45,654	13.6	227	0.1	46,036
Adults (18 + years)	837,048	136,970	16.4	794	0.1	138,445
All (6 months +)	1,173,881	182,624	15.6	1,021	0.1	184,481

* Limited to sites that exported both doses administered and active clinical population data.

** Active Clinical is defined as patients who have had at least 2 visits in the last 3 years.

*** Number of unique patients with at least 1 dose.

**** Total # Doses Administered = All doses administered to patients including doses not included in coverage calculation due to lack of Active Clinical Population data.

Influenza Vaccination Doses Administered by Influenza Vaccination Type*

Area	Inactive CVX Codes*	CVX 88 FLU-NOS**	CVX 111 FLU-LAIV3	CVX 135 FLU-HIGH	CVX 140 FLU-IIV3pf	CVX 141 FLU-IIV3	CVX 144 FLU-Dermal	CVX 149 FLU-LAIV4	CVX 150 FLU-IIV4pf	CVX 153 FLU-cclIIV3	CVX 155 FLU-RIV3	CVX 158 IIV4	CVX 161 IIV4pf-ped	Proc 99.52 Vac Inf	ICD-9 V04.81 Vac Inf	CPT Billing Codes+	Cumulative # of Doses Seasonal Flu
AKA	8	14	2	206	13	1742	1	237	664	63	2	2314	.	.	86	40	5392
ALB	11	67	7	712	135	6333	101	1187	2768	.	.	1312	.	.	93	84	12810
BEM	62	130	7	198	220	5515	10	664	1020	1	.	156	.	.	489	60	8532
BIL	81	20	2	613	118	2251	.	1094	5559	.	.	319	.	.	55	75	10187
CAO	51	75	2	641	380	6681	291	906	1543	1	.	469	.	.	156	141	11337
GPA	19	41	10	317	175	6774	43	1641	3858	2	.	2115	.	1	576	38	15610
NSA	140	33	.	109	36	3076	249	383	1229	.	1	217	.	13	60	72	5618
NAV	36	83	2	152	410	36889	.	1674	2534	.	.	988	.	.	198	187	43153
OKC	55	367	24	2117	99	22237	134	2463	11186	1	.	1595	.	48	318	75	40719
PHX	17	164	2	708	39	6838	77	1349	8655	.	3	1008	.	2	184	292	19338
POR	32	201	14	400	649	5397	188	1520	2889	8	3	2168	1	.	279	213	13962
TUC	.	16	1	1	2	22	1	182	2962	.	.	440	.	1	63	5	3696
	512	1211	73	6174	2276	103755	1095	13300	44867	76	9	13101	1	65	2557	1282	190354

* Inactive CVX Codes 15 (FLU-TIVhx), 16 (FLU-WHOLE), 123 (FLU-H5N1), and 151 (FLU-NasNOS) should not be used to document flu vaccines given this flu season.

** CVX Code 88 (FLU-NOS) should only be used to document flu vaccines given elsewhere when flu vaccine type is unknown.

+ CPT Flu codes include: 90654-90662, 90672-90673, 90685-90686, 90724, G0008, G8108.

^ ICD9 codes V04.8 and V06.6 are not displayed on this report and are not used in any of the influenza vaccine coverage calculations.

- This report includes data from the following # of RPMS databases:

IHS Area	# of RPMS Databases Reporting*	# of Facilities Reporting**
NATIONAL	192	598
ALASKA	11	102
ALBUQUERQUE	12	32
BEMIDJI	19	41
BILLINGS	13	37
CALIFORNIA	26	55
GREAT PLAINS	16	33
NASHVILLE	17	26
NAVAJO	9	118
OKLAHOMA	21	58
PHOENIX	18	39
PORTLAND	28	41
TUCSON	2	16

* Exporting databases may include data from multiple facilities.

** Includes only facility categories: Hospital, Health Center, Health Station, Health Location, Alaska Village Clinic.