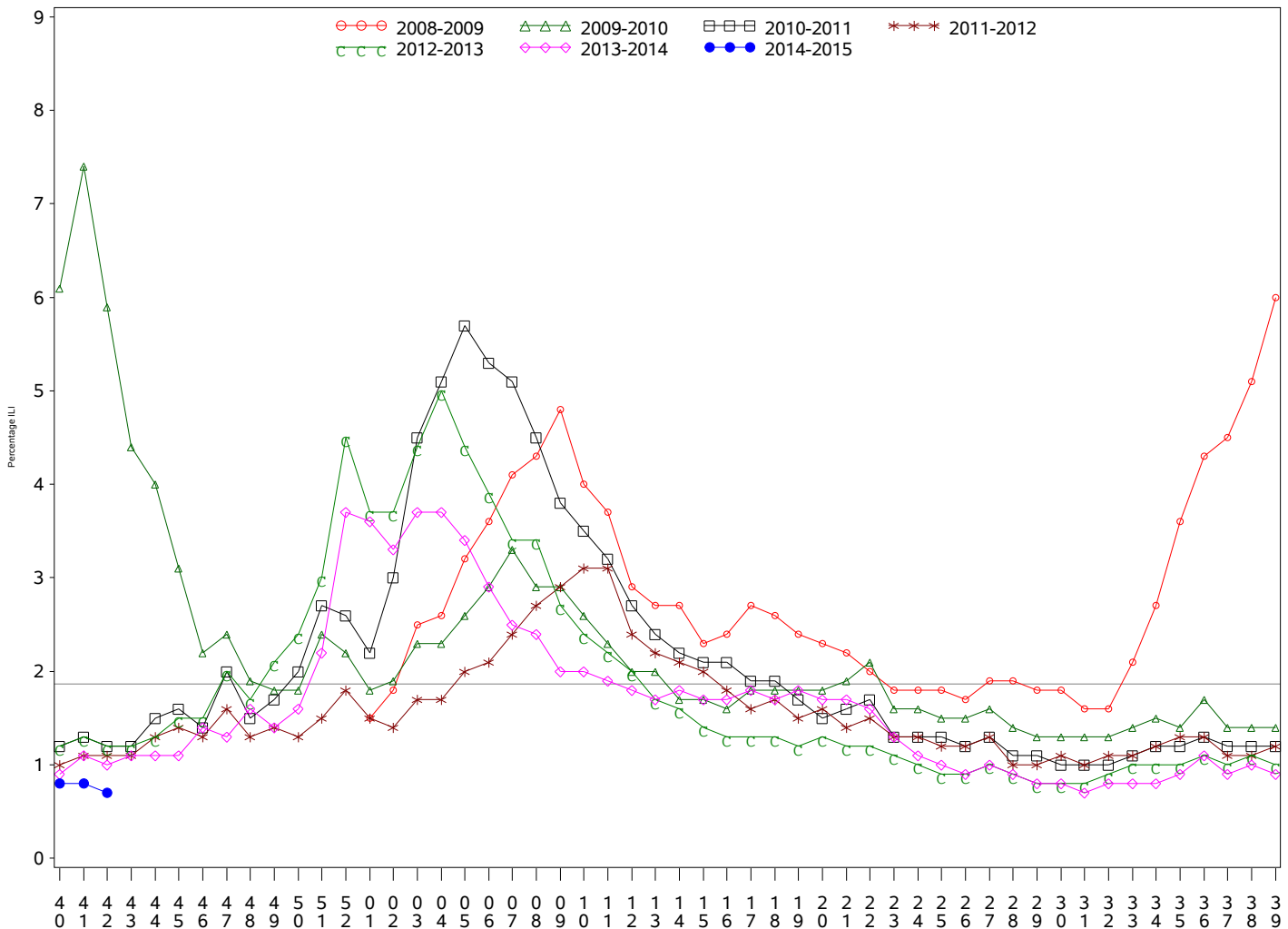




Indian Health Service
 Division of Epidemiology and Disease Prevention
Influenza Surveillance Report
IHS Influenza Awareness System (IIAS)
#3 (Week 42: 6/29/2014 – 10/18/2014)

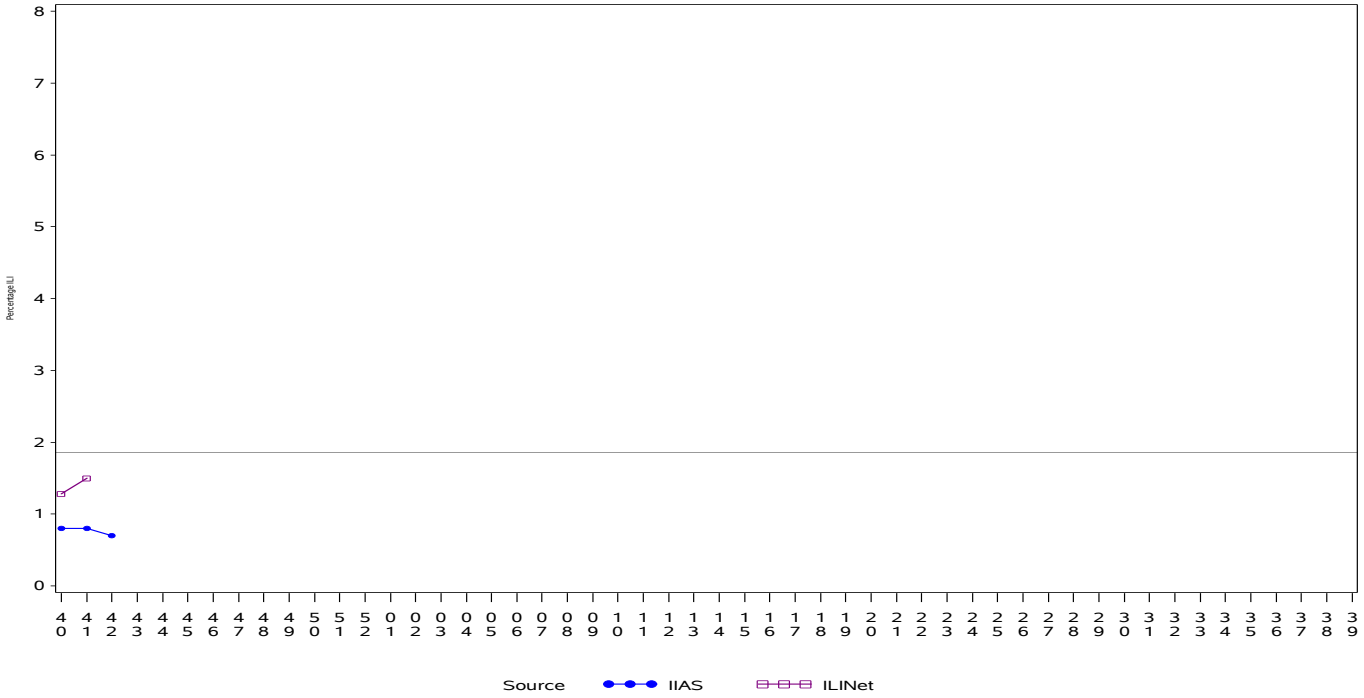
- Overall influenza-like-illness (ILI) activity in IHS and the U.S. is low.
- To date IHS has administered over 137,000 influenza vaccines this season.
- Overall, 11.8% of the IHS Active Clinical population received an influenza vaccine this season.

All IHS Areas
Influenza-Like Illness (ILI) for All Surveillance Years
Percentage of Visits for ILI per week
01/04/09 to 10/18/14



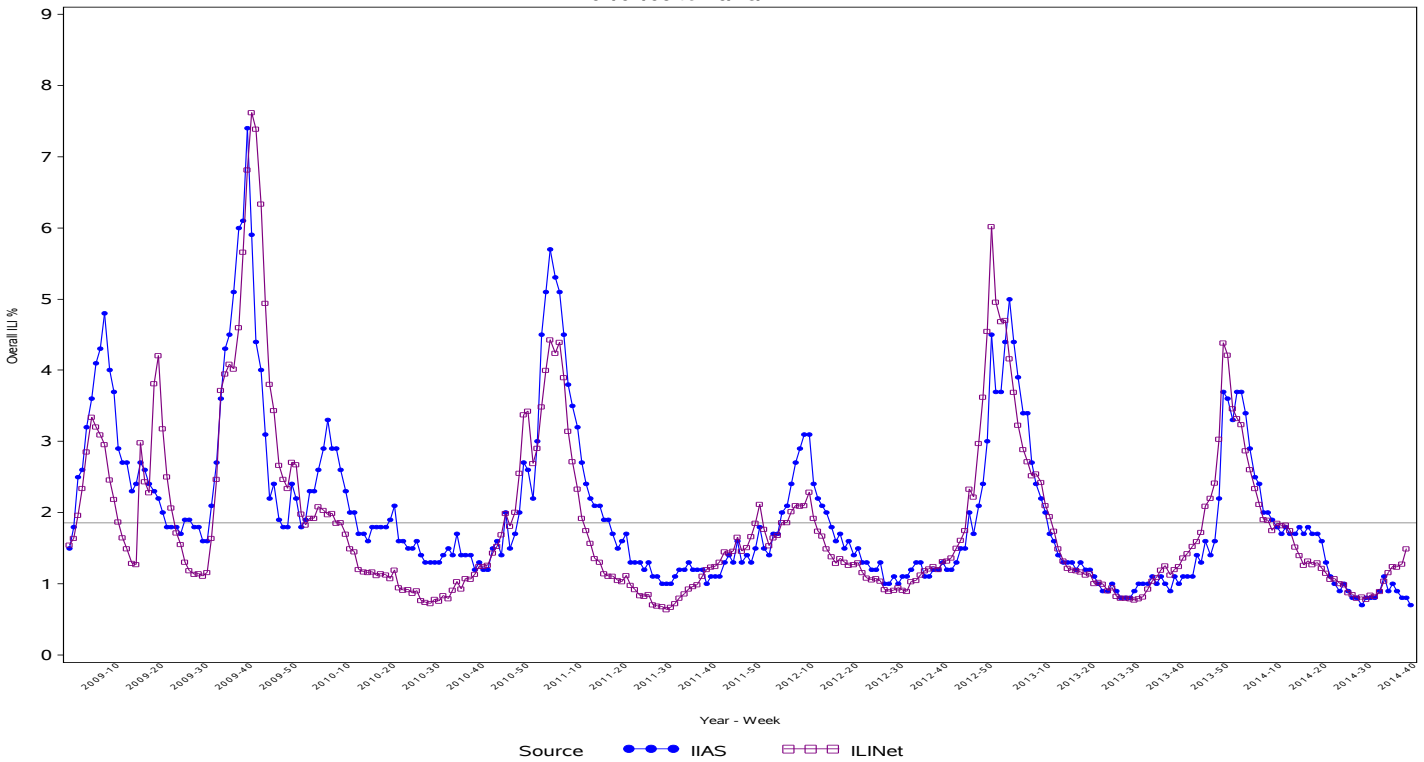
Percentage of ILI visits is number of ILI visits divided by total number of daily visits.
 The horizontal line represents the 2013-2014 baseline. The baseline is the mean percentage of patient visits for ILI during non-influenza weeks for the previous three seasons plus two standard deviations.

Proportion of Outpatient Visits for Influenza-Like Illness (ILI)
Percent ILI for FluYear 2014 - 2015
ILINet vs. IIAS
09/28/14 to 10/18/14



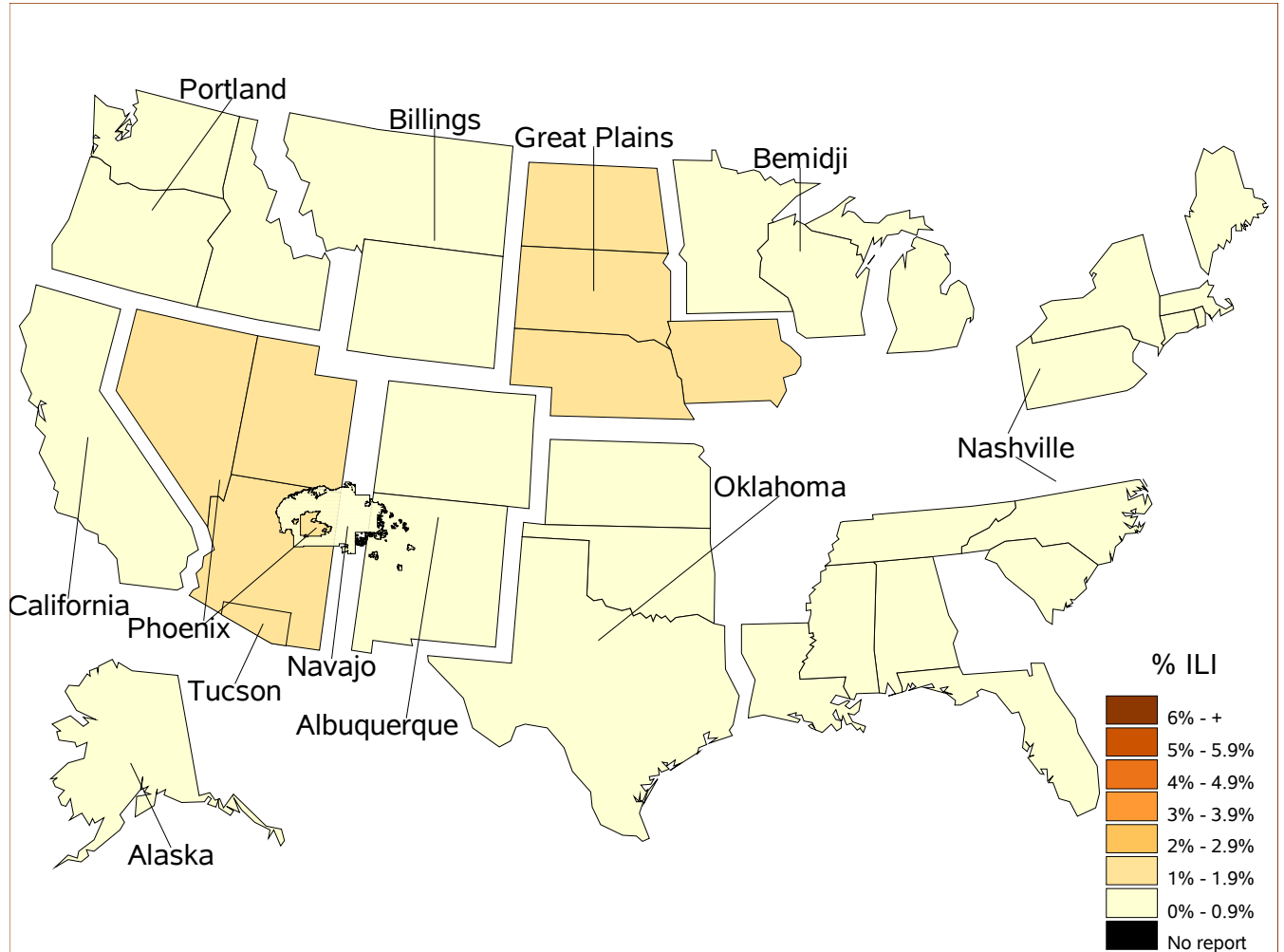
Percentage of ILI visits is number of ILI visits divided by total number of daily visits (outpatient visits).
 The horizontal line represents the 2013-2014 baseline. The baseline is the mean percentage of patient visits for ILI during non-influenza weeks for the previous three seasons plus two standard deviations.
 Sources: ILINet - CDC Sentinal Surveillance System for Influenza-Like Illness, IIAS - IHS Influenza Awareness System

IIAS versus ILINet
Influenza-Like Illness (ILI) All Surveillance Years - Continuous
Percentage of Visits for ILI per week
01/04/09 to 10/18/14



Percentage of ILI visits is number of ILI visits divided by total number of daily visits (outpatient visits).

**Percentage of Influenza-Like Illness Visits by Region
For Week: 42**



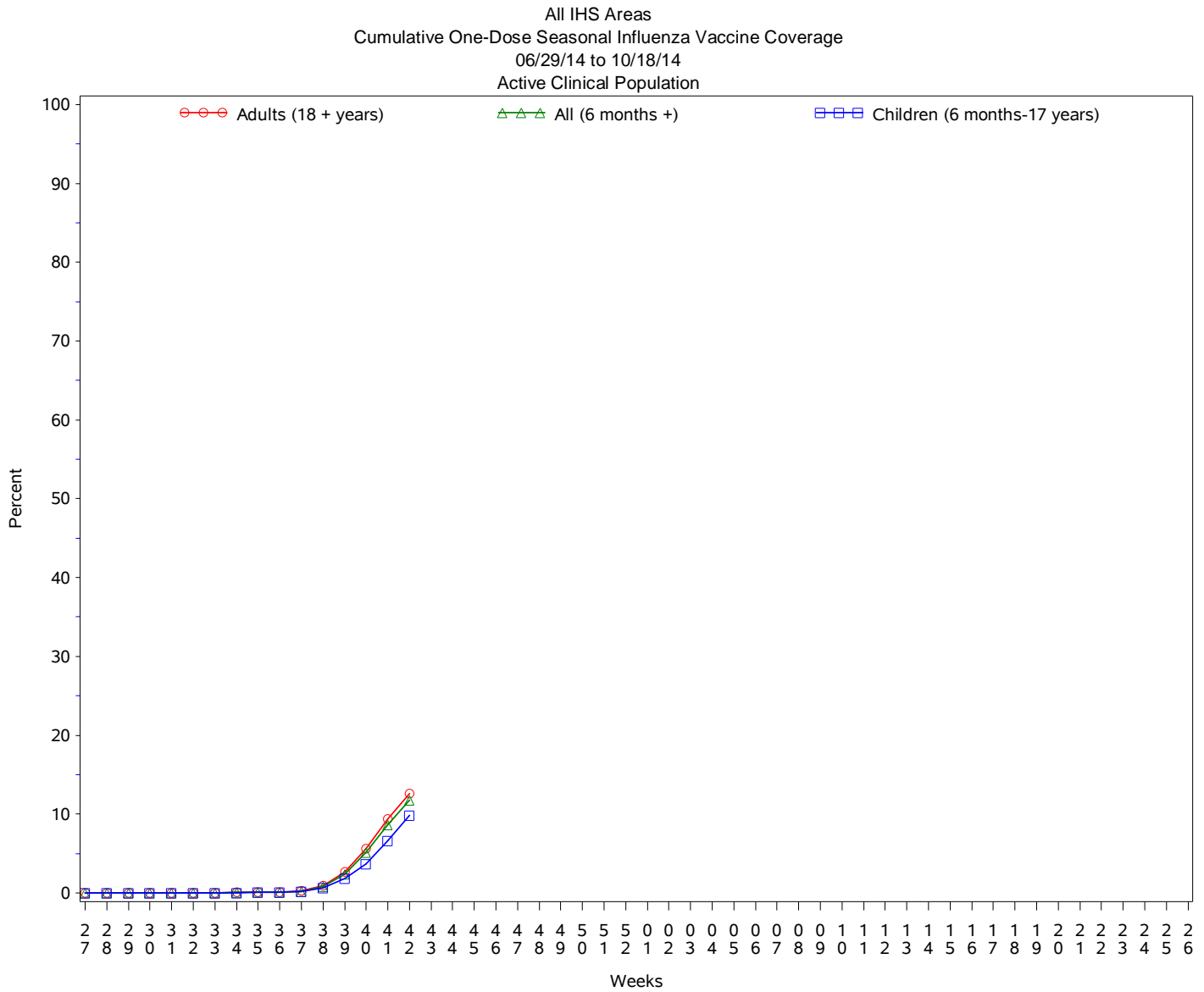
% Visits for ILI Compared to Previous Week

IHS Areas	% in Week 41	% in Week 42
NATIONAL	0.8	0.7
ALASKA	1.0	0.8
ALBUQUERQUE	0.4	0.5
BEMIDJI	0.7	0.6
BILLINGS	0.9	0.6
CALIFORNIA	0.5	0.4
GREAT PLAINS	1.2	1.3
NASHVILLE	1.0	0.9
NAVAJO	0.8	0.6
OKLAHOMA	0.6	0.4
PHOENIX	1.0	1.0
PORTLAND	0.5	0.5
TUCSON	0.7	1.1

Percentage of ILI visits is number of ILI visits divided by total number of daily visits.

IHS Influenza Vaccination* Surveillance

- As of 10/18/2014, sites reporting to the IIAS have administered 137,539 doses (1st and 2nd) of seasonal influenza vaccine to Active Clinical patients.



Influenza Vaccination Coverage by Age Group*

Age Group	Active Clinical Population**	Seasonal Flu Vaccine (At Least 1 Dose)***	% Seasonal Flu (At Least 1 Dose)	Seasonal Flu Vaccine (At Least 2 Doses)	% Seasonal Flu (At Least 2 Doses)	Total #Doses Administered****
0 - 5 months	5,358	33	0.6	4	0.1	37
6 - 23 months	26,831	3,562	13.3	25	0.1	3,592
2 - 4 years	64,528	5,886	9.1	20	0.0	5,922
5 - 17 years	240,664	22,983	9.5	93	0.0	23,138
18 - 49 years	508,723	47,251	9.3	191	0.0	47,643
50 - 64 years	202,671	33,150	16.4	155	0.1	33,455
65 + years	113,112	23,503	20.8	127	0.1	23,789
Children (6 months-17 years)	332,023	32,431	9.8	138	0.0	32,652
Adults (18 + years)	824,506	103,904	12.6	473	0.1	104,887
All (6 months +)	1,156,529	136,335	11.8	611	0.1	137,539

* Limited to sites that exported both doses administered and active clinical population data.

** Active Clinical is defined as patients who have had at least 2 visits in the last 3 years.

*** Number of unique patients with at least 1 dose.

**** Total # Doses Administered = All doses administered to patients including doses not included in coverage calculation due to lack of Active Clinical Population data.

Influenza Vaccination Doses Administered by Influenza Vaccination Type*

Area	Inactive CVX Codes*	CVX 88 FLU-NOS**	CVX 111 FLU-LAIV3	CVX 135 FLU-HIGH	CVX 140 FLU-IIV3pf	CVX 141 FLU-IIV3	CVX 144 FLU-Dermal	CVX 149 FLU-LAIV4	CVX 150 FLU-IIV4pf	CVX 153 FLU-cclIIV3	CVX 155 FLU-RIV3	CVX 158 IIV4	CVX 161 IIV4pf -ped	Proc 99.52 Vac Inf	ICD-9 V04.81 Vac Inf	CPT Billing Codes+	Cumulative # of Doses Seasonal Flu
AKA	4	11	2	175	8	1352	.	166	549	59	1	1502	.	.	70	30	3929
ALB	7	46	2	601	98	4745	94	835	2179	.	.	694	.	.	58	56	9415
BEM	44	29	4	105	151	1708	.	324	418	1	.	30	.	.	6	9	2829
BIL	79	14	2	522	105	1674	.	882	4454	.	.	203	.	.	58	64	8057
CAO	23	50	2	533	270	5274	218	705	1206	.	.	308	.	.	137	120	8846
GPA	18	32	9	263	86	5474	43	1318	3354	2	.	1604	.	1	461	16	12681
NSA	114	25	.	93	18	2360	187	295	998	.	1	155	.	11	48	36	4341
NAV	15	56	1	52	344	27757	.	1147	1524	.	.	577	.	.	145	144	31762
OKC	30	231	10	1694	81	16688	81	1836	8985	1	.	1183	.	38	256	65	31179
PHX	14	117	1	541	30	4871	9	767	6873	.	2	847	.	2	157	172	14403
POR	30	146	7	332	543	4175	165	1343	2490	6	2	1602	.	.	240	195	11276
TUC	.	16	.	1	2	13	1	144	2094	.	.	377	.	1	46	4	2699
	378	773	40	4912	1736	76091	798	9762	35124	69	6	9082	0	53	1682	911	141417

* Inactive CVX Codes 15 (FLU-TIVhx), 16 (FLU-WHOLE), 123 (FLU-H5N1), and 151 (FLU-NasNOS) should not be used to document flu vaccines given this flu season.

** CVX Code 88 (FLU-NOS) should only be used to document flu vaccines given elsewhere when flu vaccine type is unknown.

+ CPT Flu codes include: 90654-90662, 90672-90673, 90685-90686, 90724, G0008, G8108.

^ ICD9 codes V04.8 and V06.6 are not displayed on this report and are not used in any of the influenza vaccine coverage calculations.

- This report includes data from the following # of RPMS databases:

IHS Area	# of RPMS Databases Reporting*	# of Facilities Reporting**
NATIONAL	179	591
ALASKA	12	117
ALBUQUERQUE	13	36
BEMIDJI	4	17
BILLINGS	13	36
CALIFORNIA	26	55
GREAT PLAINS	16	33
NASHVILLE	17	26
NAVAJO	8	111
OKLAHOMA	21	58
PHOENIX	19	44
PORTLAND	28	41
TUCSON	2	17

* Exporting databases may include data from multiple facilities.

** Includes only facility categories: Hospital, Health Center, Health Station, Health Location, Alaska Village Clinic.