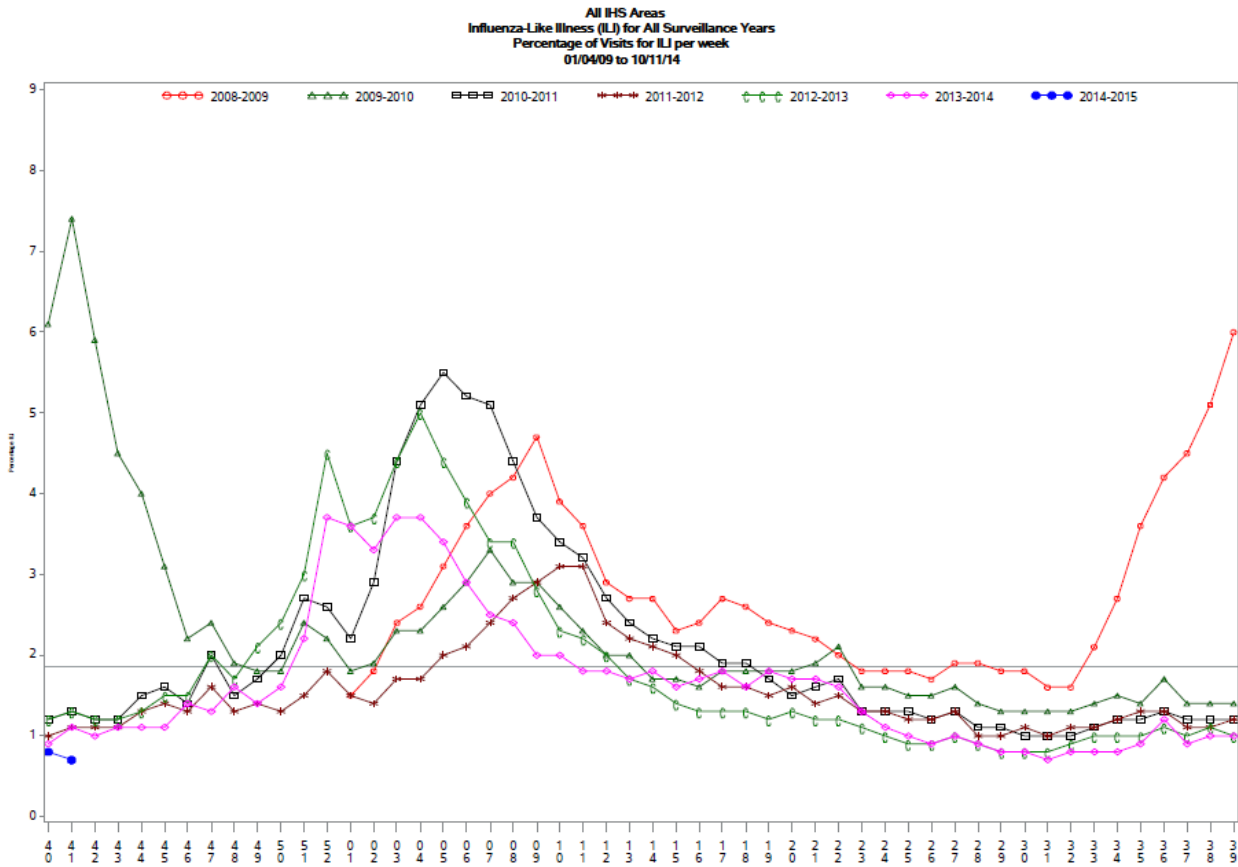




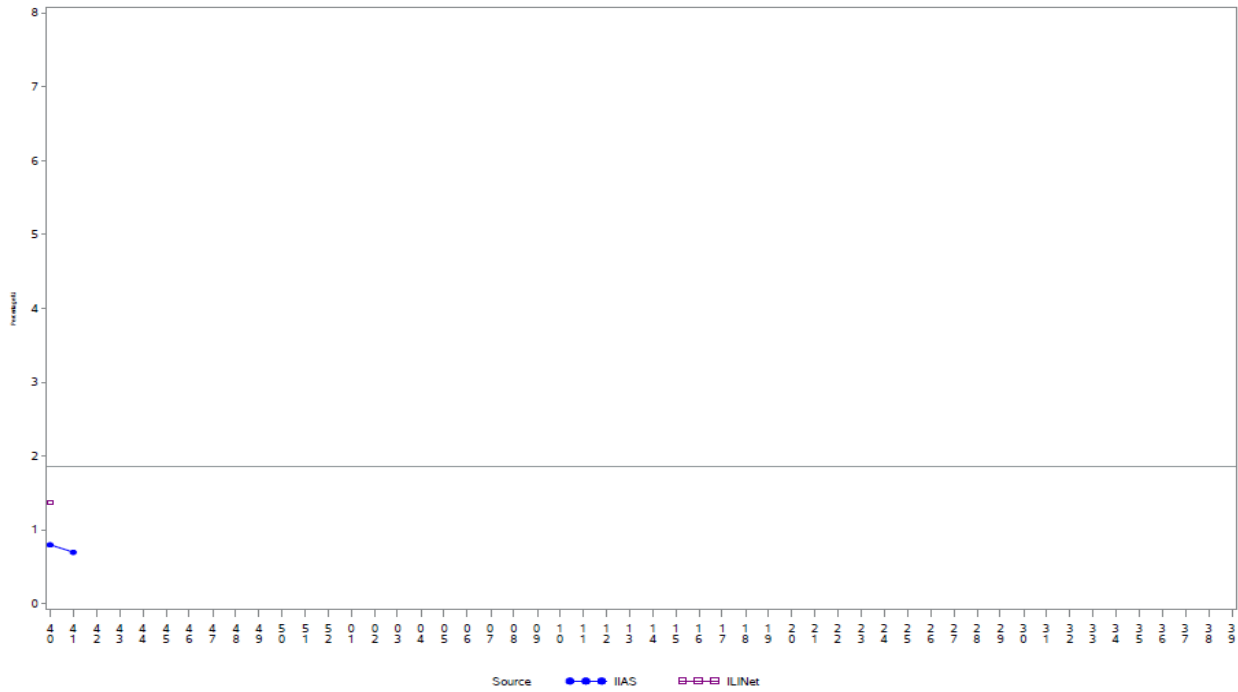
Indian Health Service
Division of Epidemiology and Disease Prevention
Influenza Surveillance Report
IHS Influenza Awareness System (IIAS)
#2 (Week 41: 6/29/2014 – 10/11/2014)

- Overall influenza-like-illness (ILI) activity in IHS and the U.S. is low.
- To date IHS has administered over 95,000 influenza vaccines this season.
- Overall, 8.2% of the IHS Active Clinical population has received an influenza vaccine this season.



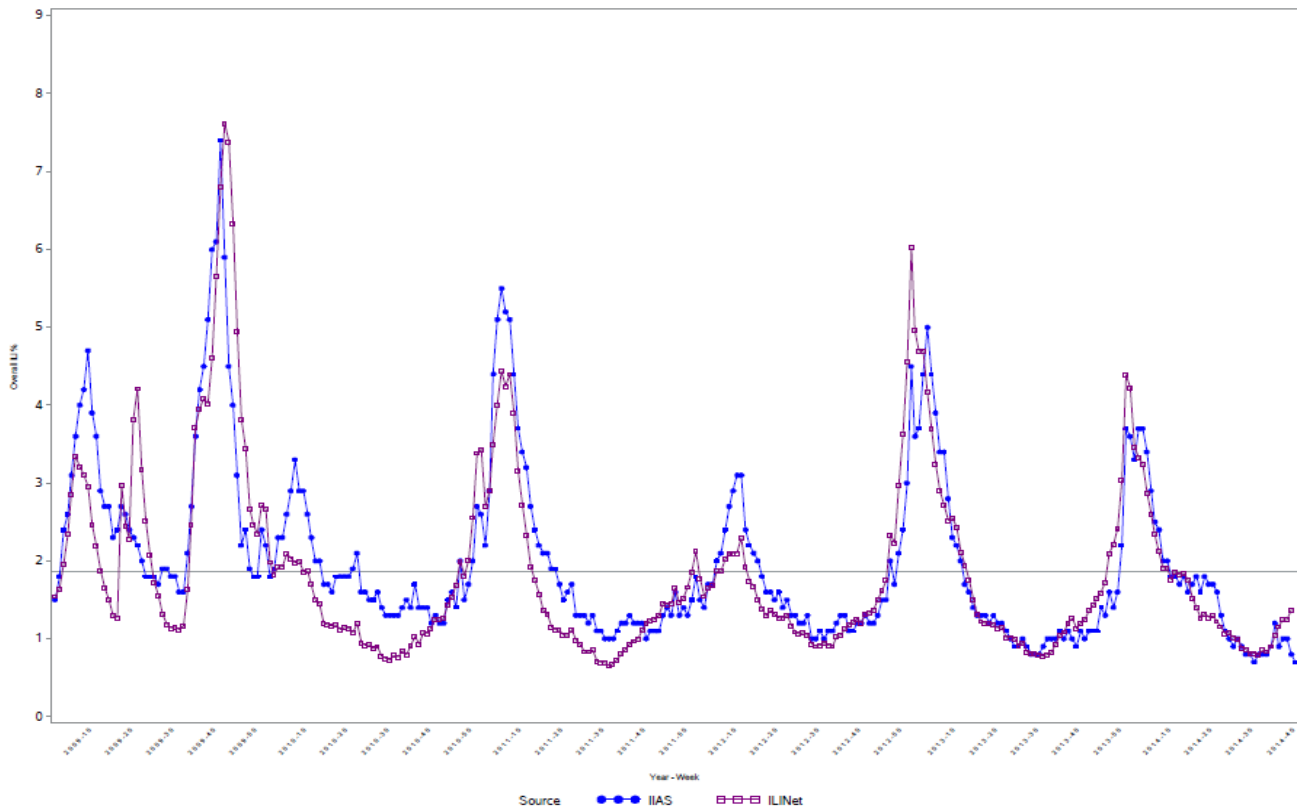
Percentage of ILI visits is number of ILI visits divided by total number of daily visits.
The horizontal line represents the 2013-2014 baseline. The baseline is the mean percentage of patient visits for ILI during non-influenza weeks for the previous three seasons plus two standard deviations.

Proportion of Outpatient Visits for Influenza-Like Illness (ILI)
 Percent ILI for Flu Year 2014 - 2015
 ILINet vs. IAS
 09/28/14 to 10/11/14



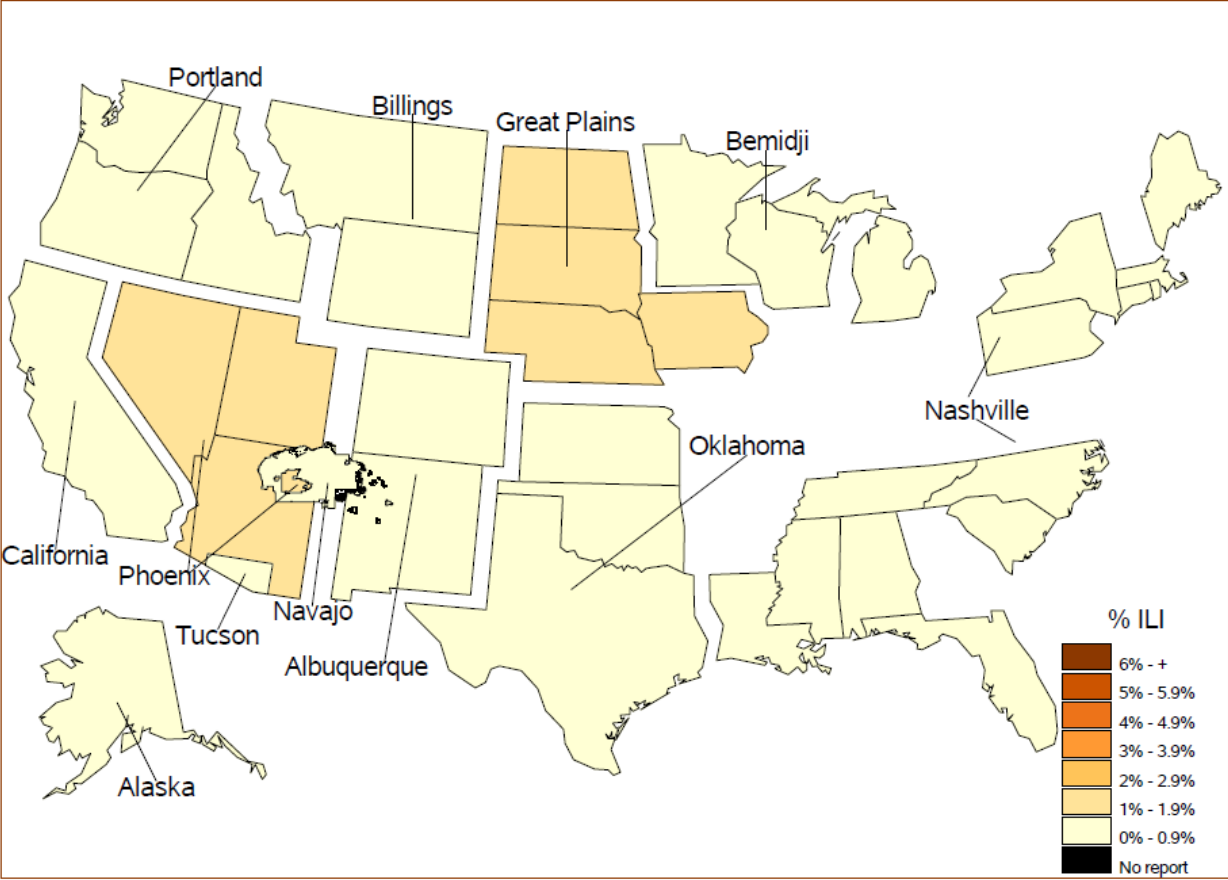
Source ●●● IAS ■■■ ILINet
 Percentage of ILI visits is number of ILI visits divided by total number of daily visits (outpatient visits).
 The horizontal line represents the 2013-2014 baseline. The baseline is the mean percentage of patient visits for ILI during non-influenza weeks for the previous three seasons plus two standard deviations.
 Sources: ILINet - CDC Sentinel Surveillance System for Influenza-Like Illness, IAS - IHS Influenza Awareness System

IAS versus ILINet
 Influenza-Like Illness (ILI) All Surveillance Years - Continuous
 Percentage of Visits for ILI per week
 01/04/09 to 10/11/14



Source ●●● IAS ■■■ ILINet
 Percentage of ILI visits is number of ILI visits divided by total number of daily visits (outpatient visits).

**Percentage of Influenza-Like Illness Visits by Region
For Week: 41**



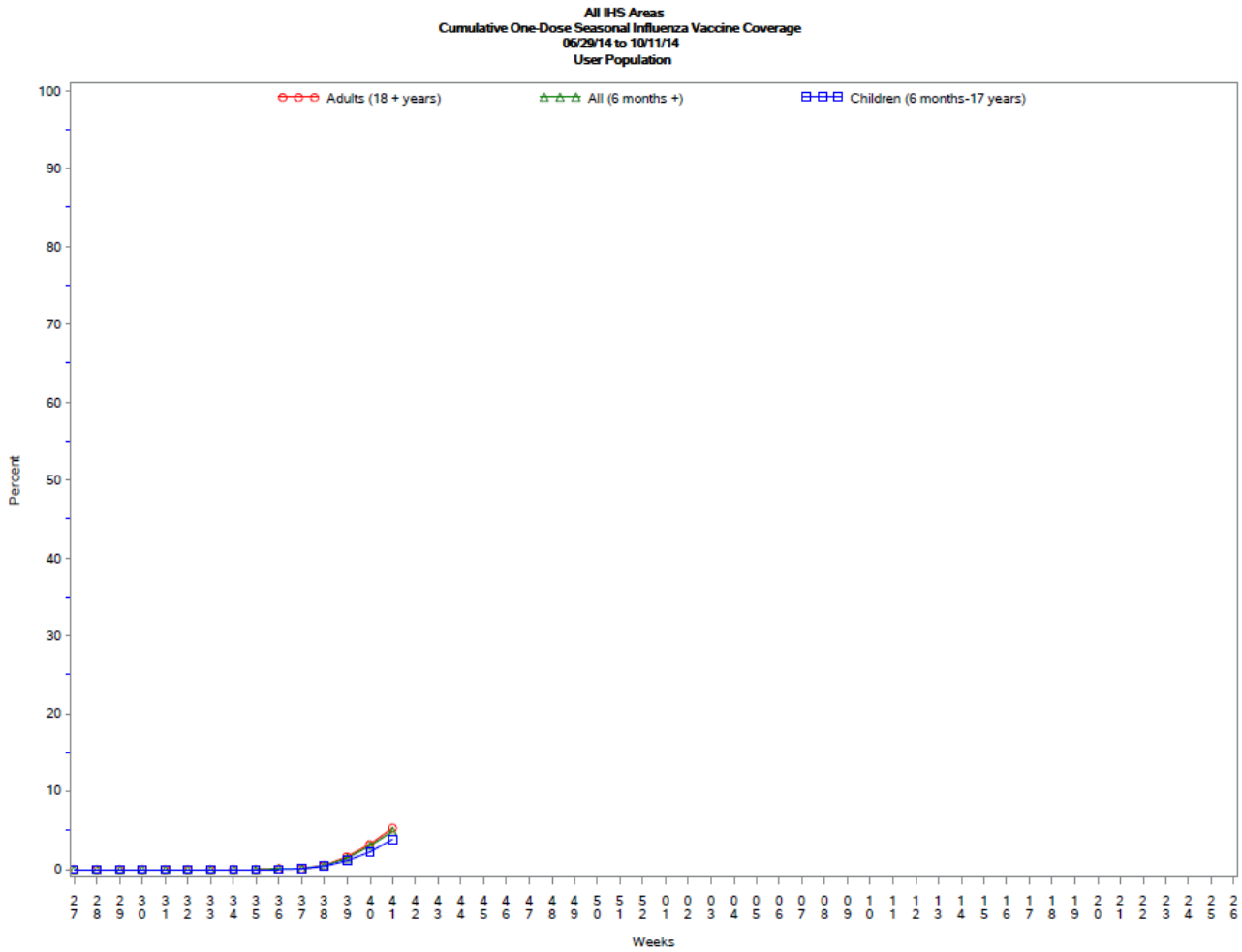
% Visits for ILI Compared to Previous Week

IHS Areas	% in Week 40	% in Week 41
NATIONAL	0.8	0.7
ALASKA	0.6	0.8
ALBUQUERQUE	0.8	0.4
BEMIDJI	1.5	0.8
BILLINGS	1.0	0.8
CALIFORNIA	0.4	0.5
GREAT PLAINS	1.0	1.1
NASHVILLE	1.0	0.9
NAVAJO	1.0	0.6
OKLAHOMA	0.6	0.4
PHOENIX	1.3	1.2
PORTLAND	0.5	0.5
TUCSON	0.9	0.5

Percentage of ILI visits is number of ILI visits divided by total number of daily visits.

IHS Influenza Vaccination* Surveillance

- As of 10/11/2014, sites reporting to the IIAS have administered 95,238 doses (1st and 2nd) of seasonal influenza vaccine to Active Clinical patients.



* Not all sites are currently sending the newer influenza vaccine codes, which may result in an underestimate of vaccine coverage.

Influenza Vaccination Coverage by Age Group*

Age Group	Active Clinical Population**	Seasonal Flu Vaccine (At Least 1 Dose)***	% Seasonal Flu (At Least 1 Dose)	Seasonal Flu Vaccine (At Least 2 Doses)	% Seasonal Flu (At Least 2 Doses)	Total #Doses Administered****
0 - 5 months	5,377	24	0.4	4	0.1	28
6 - 23 months	26,810	2,408	9.0	15	0.1	2,426
2 - 4 years	64,430	3,991	6.2	10	0.0	4,008
5 - 17 years	240,226	14,453	6.0	48	0.0	14,527
18 - 49 years	507,265	33,386	6.6	128	0.0	33,671
50 - 64 years	202,046	23,521	11.6	101	0.0	23,736
65 + years	112,812	16,670	14.8	75	0.1	16,870
Children (6 months-17 years)	331,466	20,852	6.3	73	0.0	20,961
Adults (18 + years)	822,123	73,577	8.9	304	0.0	74,277
All (6 months +)	1,153,589	94,429	8.2	377	0.0	95,238

* Not all sites are currently sending the newer influenza vaccine codes, which may result in an underestimate of vaccine coverage.

** Active Clinical population is defined as patients who have had at least 2 visits in the last 3 years

*** Limited to sites that exported both doses administered and active clinical population data

Influenza Vaccination Doses Administered by Influenza Vaccination Type*

Area	Inactive CVX Codes*	CVX 88 FLU-NOS**	CVX 111 FLU-LAIV3	CVX 135 FLU-HIGH	CVX 140 FLU-IIV3pf	CVX 141 FLU-IIV3	CVX 144 FLU-Dermal	CVX 149 FLU-LAIV4	CVX 150 FLU-IIV4pf	CVX 153 FLU-ccIIV3	CVX 155 FLU-RIV3	CVX 158 IIV4	CVX 161 IIV4pf -ped	Proc 99.52 Vac Inf	ICD-9 V04.81 Vac Inf	CPT Billing Codes+	Cumulative # of Doses Seasonal Flu
AKA	1	6	1	108	5	607	.	91	275	51	1	738	.	.	34	19	1937
ALB	5	40	2	491	46	3066	59	665	1600	.	.	382	.	.	55	40	6451
BEM	14	15	1	72	91	835	.	187	249	1	.	15	.	.	4	5	1489
BIL	76	13	2	396	74	1151	.	619	3390	.	.	130	.	.	52	41	5944
CAO	18	35	2	390	199	3808	169	525	923	.	.	215	.	.	104	56	6444
GPA	11	17	9	220	35	4137	32	1039	2544	2	.	1231	.	.	336	13	9626
NSA	91	14	.	77	9	1583	120	217	740	.	1	105	.	10	31	32	3030
NAV	14	36	1	44	235	19237	.	685	1109	.	.	330	.	.	104	104	21899
OKC	17	128	6	1223	39	11021	56	1070	6064	.	.	790	.	17	189	22	20642
PHX	6	79	1	318	27	2600	8	462	5186	.	2	744	.	1	114	110	9658
POR	28	113	2	266	419	2962	125	1066	1852	5	1	1158	.	.	199	150	8346
TUC	.	14	.	1	2	10	1	79	1628	.	.	248	.	1	31	2	2017
	281	510	27	3606	1181	51017	570	6705	25560	59	5	6086	0	29	1253	594	97483

* Not all sites are currently sending the newer influenza vaccine codes, which may result in an underestimate of vaccine coverage.

** Inactive CVX Codes 15 (FLU-TIVhx), 16 (FLU-WHOLE), 123 (FLU-H5N1), and 151 (FLU-NasNOS) should not be used to document flu vaccines given this flu season.

*** CVX Code 88 (FLU-NOS) should only be used to document flu vaccines given elsewhere when flu vaccine type is unknown.

- This report includes data from the following # of RPMS databases:

IHS Area	# of RPMS Databases Reporting*	# of Facilities Reporting**
NATIONAL	175	618
ALASKA	12	175
ALBUQUERQUE	12	29
BEMIDJI	3	12
BILLINGS	13	37
CALIFORNIA	26	54
GREAT PLAINS	16	33
NASHVILLE	17	27
NAVAJO	8	101
OKLAHOMA	19	55
PHOENIX	18	37
PORTLAND	29	42
TUCSON	2	16

* Exporting databases may include data from multiple facilities.

** Includes only facility categories: Hospital, Health Center, Health Station, Health Location, Alaska Village Clinic.