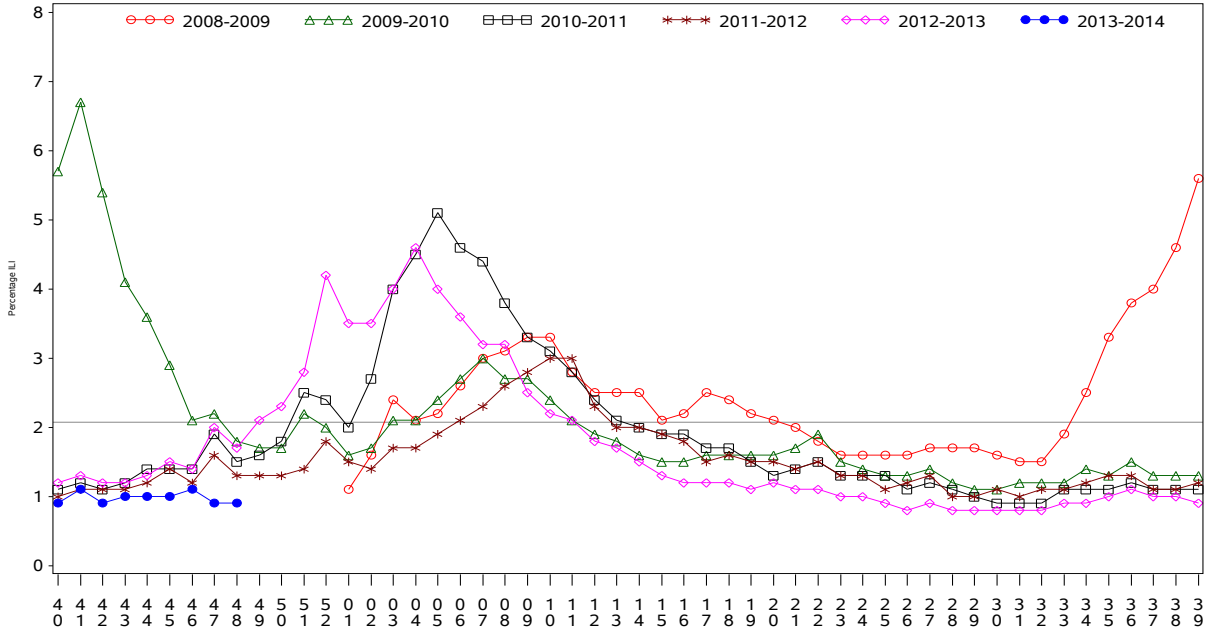




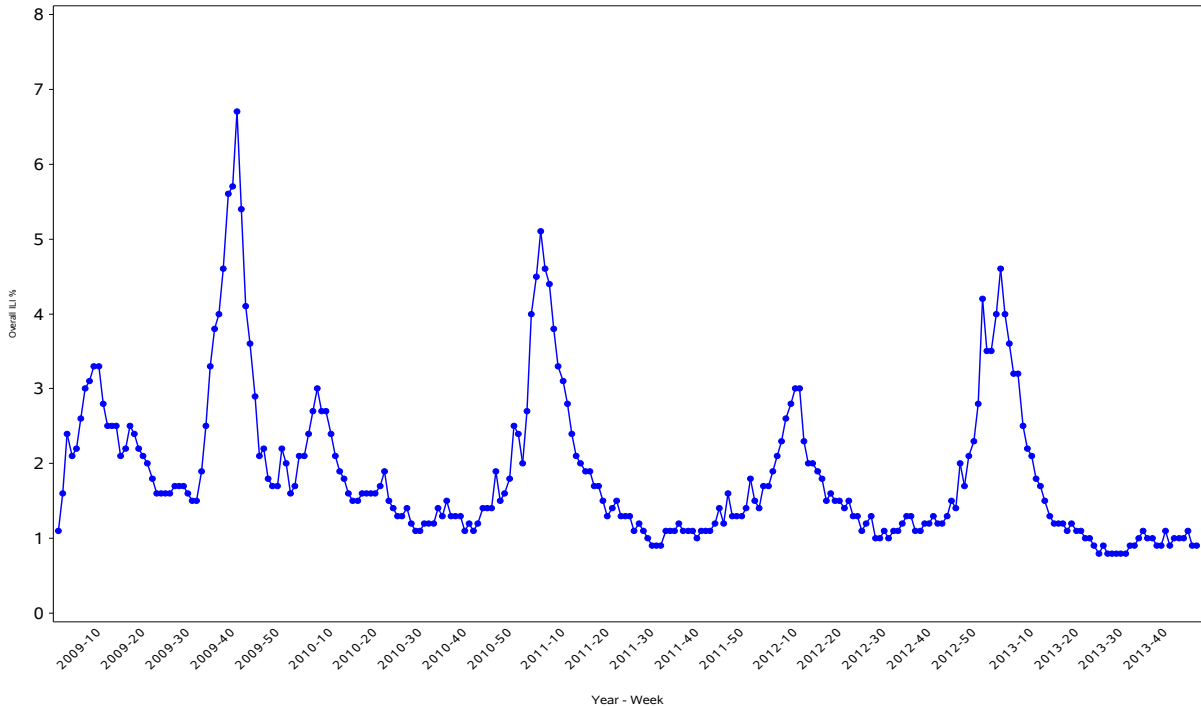
Indian Health Service
 Division of Epidemiology and Disease Prevention
Influenza Surveillance Report
IHS Influenza Awareness System (IIAS)
#9 (Week 48: 11/24/2013 – 11/30/2013)

All IHS Areas
 Influenza-Like Illness (ILI) for All Surveillance Years
 Percentage of Visits for ILI per week
 01/04/09 to 11/30/13



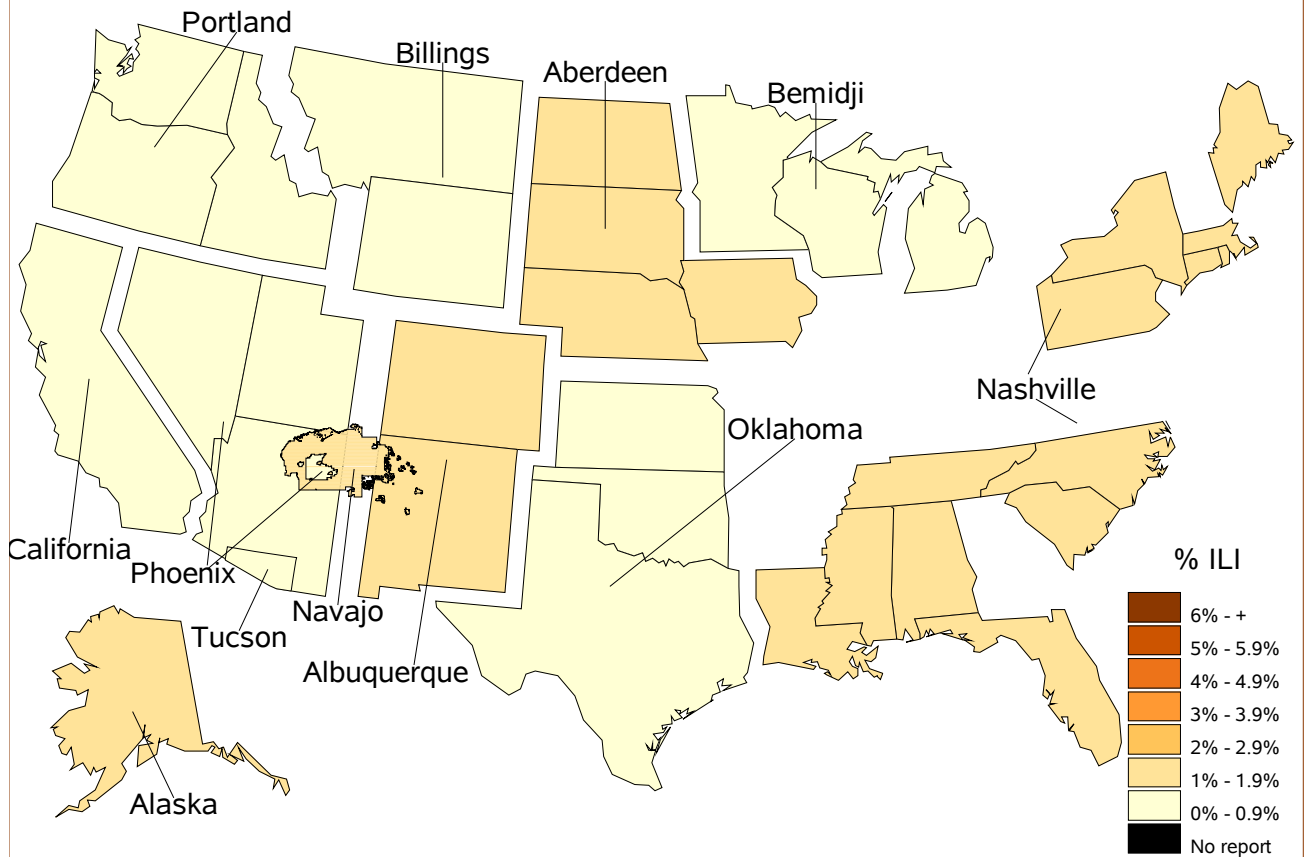
Percentage of ILI visits is number of ILI visits divided by total number of daily visits.
 The horizontal line represents the 2012-2013 baseline. The baseline is the mean percentage of patient visits for ILI during non-influenza weeks for the previous three seasons plus two standard deviations.

All IHS Areas
 Influenza-Like Illness (ILI) All Surveillance Years - Continuous
 Percentage of Visits for ILI per week
 01/04/09 to 11/30/13



Percentage of ILI visits is number of ILI visits divided by total number of daily visits.

Percentage of Influenza-Like Illness Visits by Region For Week: 48

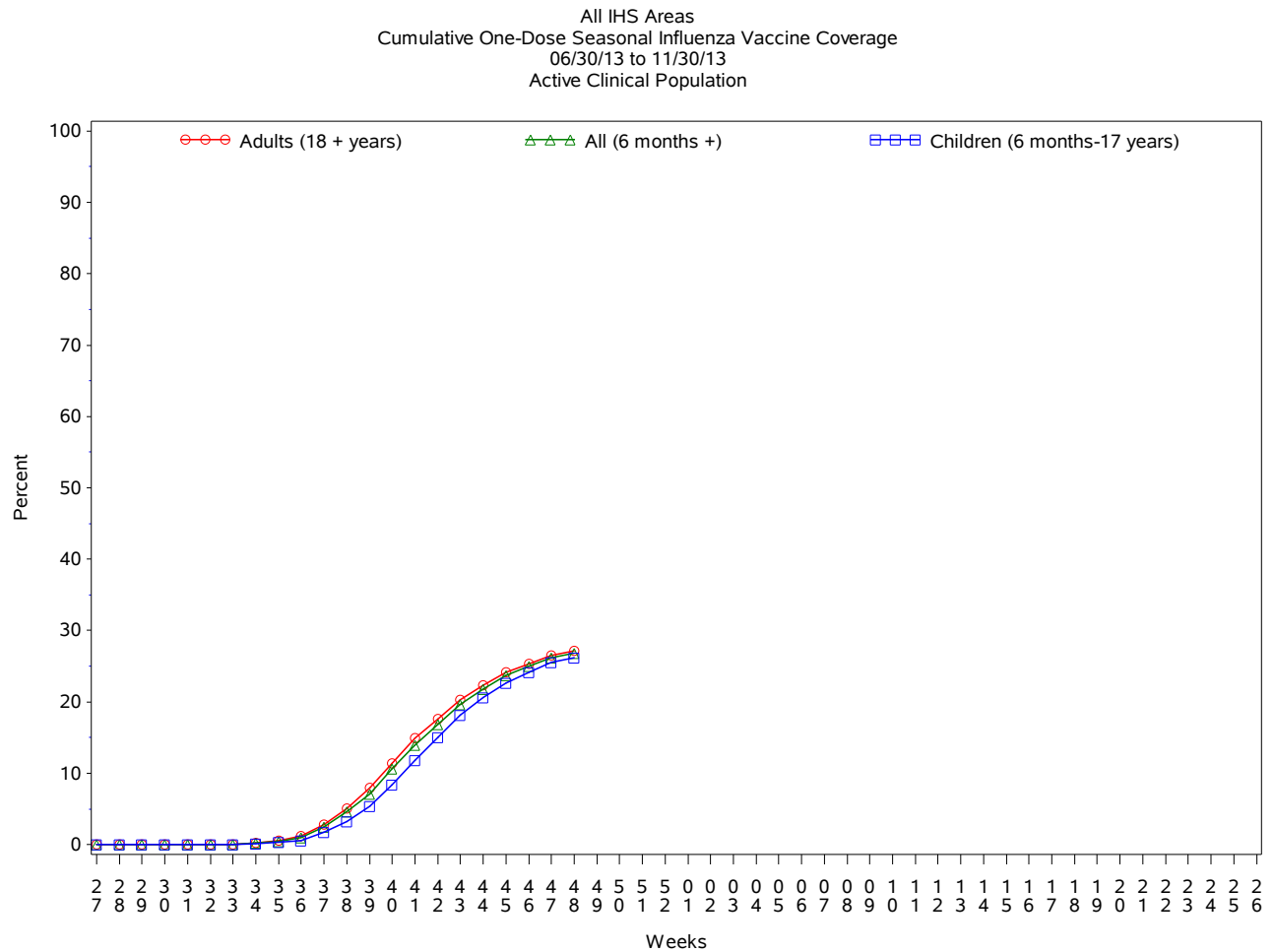


% Visits for ILI Compared to Previous Week

| IHS Areas | % in Week 47 | % in Week 48 |
|-------------|--------------|--------------|
| NATIONAL | 0.9 | 0.9 |
| ABERDEEN | 1.3 | 1.1 |
| ALASKA | 0.9 | 1.0 |
| ALBUQUERQUE | 0.9 | 1.0 |
| BEMIDJI | 0.6 | 0.9 |
| BILLINGS | 0.9 | 0.7 |
| CALIFORNIA | 0.3 | 0.1 |
| NASHVILLE | 0.7 | 1.2 |
| NAVAJO | 1.3 | 1.3 |
| OKLAHOMA | 0.5 | 0.4 |
| PHOENIX | 0.9 | 0.9 |
| PORTLAND | 0.6 | 0.6 |
| TUCSON | 0.4 | 0.7 |

IHS Influenza Vaccination* Surveillance

- As of 11/30/2013, sites reporting to the IIAS have administered 310,238 doses (1st and 2nd) of seasonal influenza vaccine to Active Clinical patients.



* The IIAS currently does not capture some of the newer influenza vaccine codes; vaccine coverage reported here is an underestimate.

Influenza Vaccination Coverage by Age Group*

| | Active Clinical Population** | Seasonal Flu Vaccine (At Least 1 Dose)*** | % Seasonal Flu (At Least 1 Dose) | Seasonal Flu Vaccine (At Least 2 Doses) | % Seasonal Flu (At Least 2 Doses) | Total # Doses Administered |
|------------------------------|------------------------------|---|----------------------------------|---|-----------------------------------|----------------------------|
| 0 - 5 months | 5,311 | 60 | 1.1 | . | . | 60 |
| 6 - 23 months | 26,255 | 10,396 | 39.6 | 1,537 | 5.9 | 11,970 |
| 2 - 4 years | 64,991 | 15,140 | 23.3 | 302 | 0.5 | 15,490 |
| 5 - 17 years | 236,172 | 60,196 | 25.5 | 524 | 0.2 | 60,932 |
| 18 - 49 years | 506,778 | 105,852 | 20.9 | 904 | 0.2 | 107,313 |
| 50 - 64 years | 194,230 | 67,896 | 35.0 | 653 | 0.3 | 68,899 |
| 65 + years | 106,164 | 44,830 | 42.2 | 478 | 0.5 | 45,634 |
| Children (6 months-17 years) | 327,418 | 85,732 | 26.2 | 2,363 | 0.7 | 88,392 |
| Adults (18 + years) | 807,172 | 218,578 | 27.1 | 2,035 | 0.3 | 221,846 |
| All (6 months +) | 1,134,590 | 304,310 | 26.8 | 4,398 | 0.4 | 310,238 |

*Data on the new influenza vaccines are not currently captured in the IIAS: therefore these are underestimates

** Active Clinical population is defined as patients who have had at least 2 visits in the last 3 years

*** Limited to sites that exported both doses administered and active clinical population data

Influenza Vaccination Doses Administered by Influenza Vaccination Type*

| Area | Inactive CVX Codes** | CVX 88 FLU-NOS** * | CVX 111 FLU-LAIV3 | CVX 135 FLU-HIGH | CVX 140 FLU-IIV3pf | CVX 141 FLU-IIV3 | CVX 144 FLU-DERMAL | CVX 149 FLU-LAIV4 | CVX 150 FLU-IIV4pf | CVX 153 FLU-ccIIV3 | CVX 155 FLU-RIV3 | CVX 158 IIV4 | Proc 99.52 Vac Inf | ICD-9 V04.81 Vac Inf | CPT Billing Codes | Cumulative # of Doses Seasonal Flu |
|------|----------------------|--------------------|-------------------|------------------|--------------------|------------------|--------------------|-------------------|--------------------|--------------------|------------------|--------------|--------------------|----------------------|-------------------|------------------------------------|
| ABR | 17 | 170 | 34 | 308 | 3607 | 14356 | 82 | . | . | . | . | . | 1 | 4768 | 549 | 23892 |
| AKA | 120 | 62 | 53 | 207 | 2095 | 5262 | 29 | . | . | . | . | . | . | 924 | 331 | 9083 |
| ALB | 6 | 145 | 17 | 582 | 3461 | 15646 | 286 | . | . | . | . | . | . | 1174 | 2323 | 23640 |
| BEM | 63 | 102 | 169 | 69 | 1777 | 6439 | 94 | . | . | . | . | . | . | 1050 | 342 | 10105 |
| BIL | 3 | 77 | 34 | 944 | 10167 | 5058 | 233 | . | . | . | . | . | 1 | 1566 | 1112 | 19195 |
| CAO | 39 | 104 | 57 | 464 | 1419 | 7417 | 10 | . | . | . | . | . | . | 919 | 277 | 10706 |
| NSA | 56 | 44 | 12 | 75 | 2467 | 3443 | 408 | . | . | . | . | . | . | 303 | 122 | 6930 |
| NAV | 243 | 248 | 65 | 123 | 4721 | 73060 | 2 | 3 | 1 | . | . | 3 | 23 | 1281 | 3264 | 83037 |
| OKC | 246 | 1476 | 96 | 1780 | 9571 | 51669 | 126 | 433 | 853 | 1 | . | 46 | 126 | 7751 | 944 | 75118 |
| PHX | 121 | 232 | 51 | 535 | 12238 | 13694 | 38 | . | . | . | . | . | 6 | 2993 | 2327 | 32235 |
| POR | 74 | 255 | 362 | 382 | 2878 | 15823 | 40 | 316 | . | . | . | 1 | . | 1420 | 612 | 22163 |
| TUC | 20 | 22 | 106 | 1 | 4110 | 1169 | . | . | . | . | . | . | . | 847 | 345 | 6620 |
| | 1008 | 2937 | 1056 | 5470 | 58511 | 213036 | 1348 | 752 | 854 | 1 | 0 | 50 | 157 | 24996 | 12548 | 322724 |

* Data on the new influenza vaccines are not currently captured in the IIAS: therefore doses administered data are underestimated

** Inactive CVX Codes 15 (FLU-TIVhx), 16 (FLU-WHOLE), 123 (FLU-H5N1), and 151 (FLU-NasNOS) should not be used to document flu vaccines given this flu season.

*** CVX Code 88 (FLU-NOS) should only be used to document flu vaccines given elsewhere when flu vaccine type is unknown.

Summary

- This report includes data from the following # of RPMS databases:

| IHS Area | # of RPMS Databases Reporting* | # of Facilities Reporting** |
|-----------------|---------------------------------------|------------------------------------|
| NATIONAL | 148 | 325 |
| ABERDEEN | 16 | 28 |
| ALASKA | 12 | 75 |
| ALBUQUERQUE | 12 | 21 |
| BEMIDJI | 3 | 9 |
| BILLINGS | 12 | 29 |
| CALIFORNIA | 4 | 5 |
| NASHVILLE | 16 | 19 |
| NAVAJO | 9 | 31 |
| OKLAHOMA | 21 | 41 |
| PHOENIX | 16 | 27 |
| PORTLAND | 26 | 34 |
| TUCSON | 1 | 6 |

* Exporting databases may include data from multiple facilities.

** Includes only facility categories: Hospital, Health Center, Health Station, Health Location, Alaska Village Clinic.

- Nationwide, ILI is low.
- Influenza vaccination is underway.