

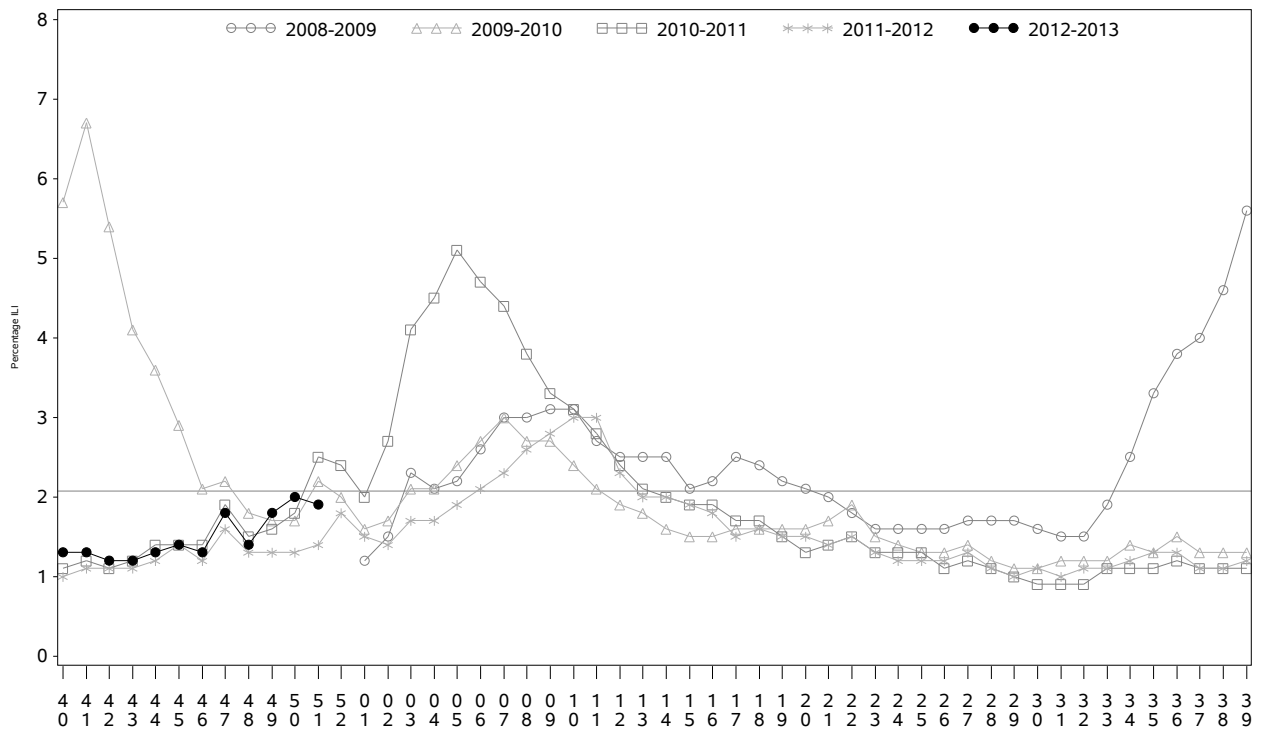


Indian Health Service
 Division of Epidemiology and Disease Prevention
 Influenza Surveillance Report
IHS Influenza Awareness System (IIAS)
#12 (Week 51: 12/16/2012 – 12/22/2012)

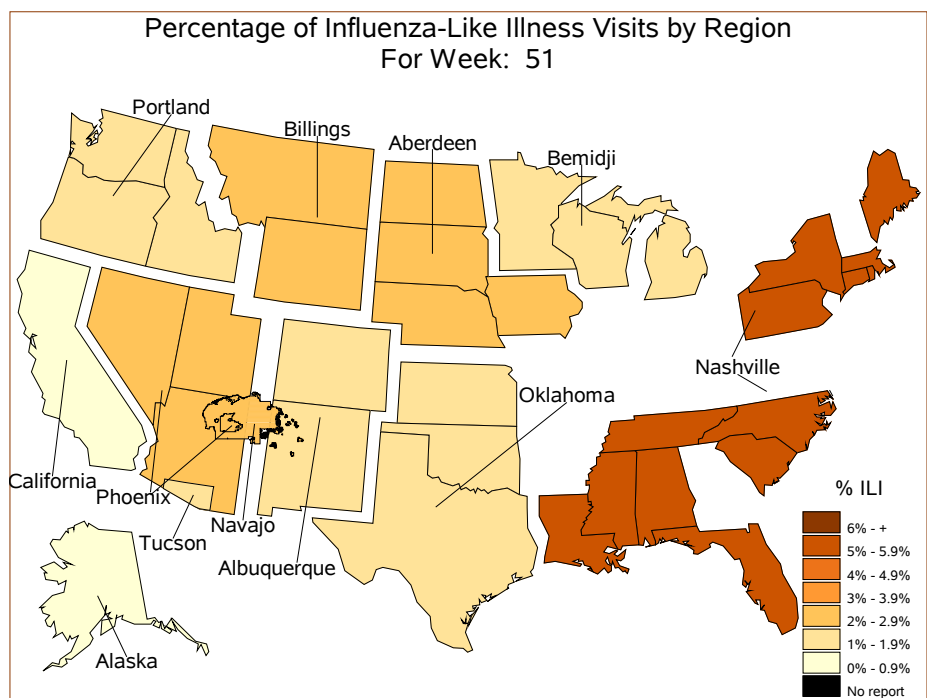
Summary

- Influenza activity is increasing, particularly in certain regions.
- Influenza vaccine coverage is increasing, but many patients remain unvaccinated.

All IHS Areas
 Influenza-Like Illness (ILI) for All Surveillance Years
 Percentage of Visits for ILI per week
 01/04/09 to 12/22/12



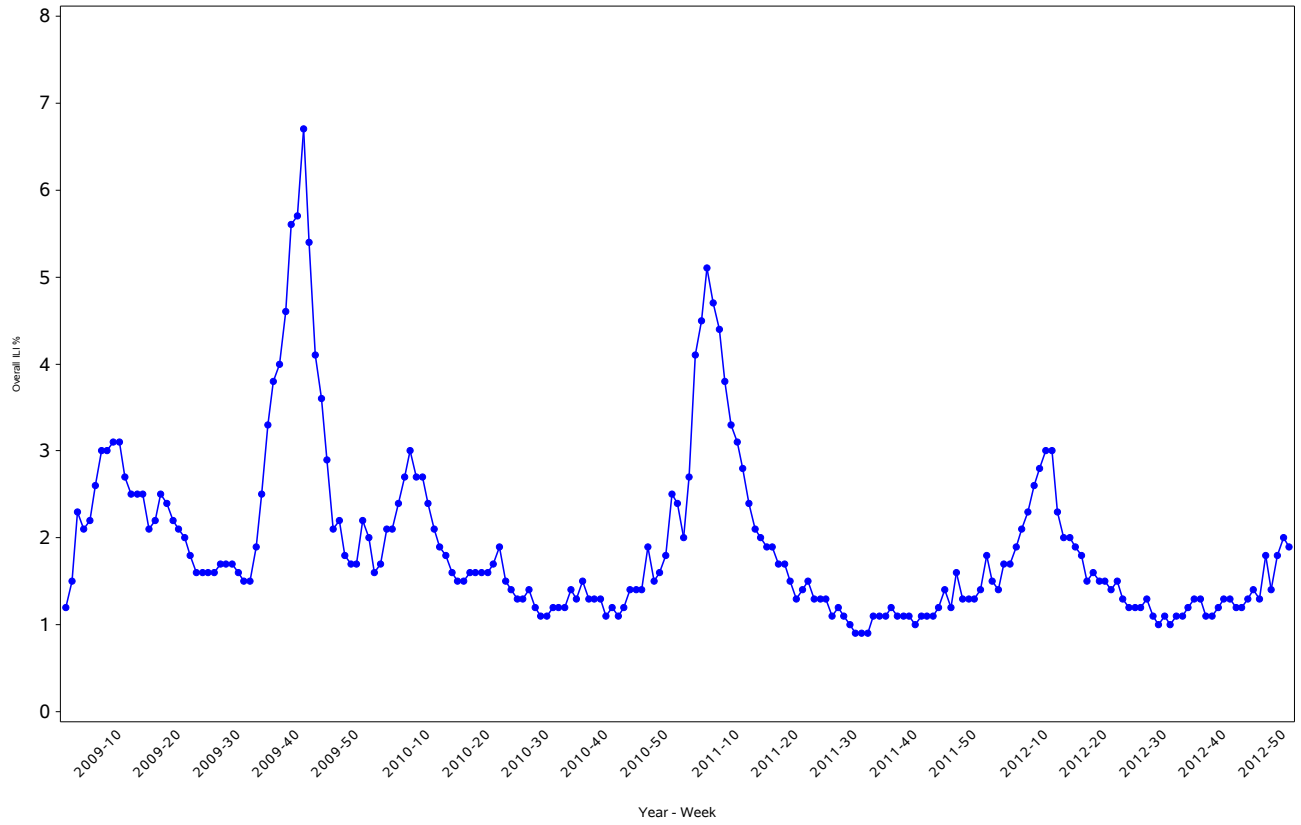
Percentage of ILI visits is number of ILI visits divided by total number of daily visits.
 The horizontal line represents the 2012-2013 baseline. The baseline is the mean percentage of patient visits for
 ILI during non-influenza weeks for the previous three seasons plus two standard deviations.



Percent ILI Visits Current week compared to previous week

IHS Areas	% in Week 50	% in Week 51
NATIONAL	2.0	1.9
ABERDEEN	2.5	2.6
ALASKA	0.6	0.3
ALBUQUERQUE	0.9	1.2
BEMIDJI	1.4	1.3
BILLINGS	2.2	2.0
CALIFORNIA	0.7	0.8
NASHVILLE	6.8	5.1
NAVAJO	3.3	2.7
OKLAHOMA	1.3	1.3
PHOENIX	1.7	2.0
PORTLAND	0.9	1.2
TUCSON	1.1	1.0

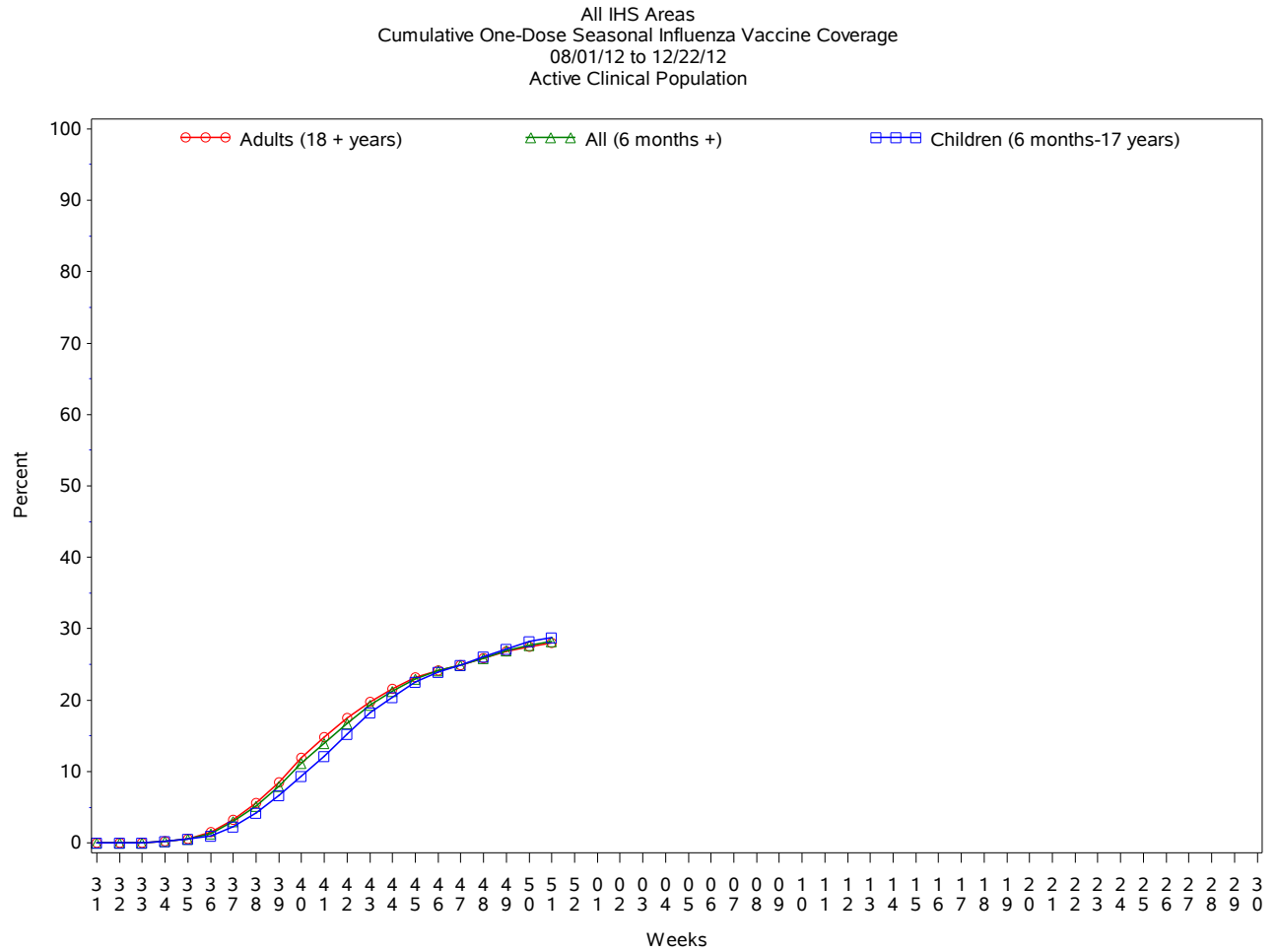
All IHS Areas
Influenza-Like Illness (ILI) All Surveillance Years - Continuous
Percentage of Visits for ILI per week
01/04/09 to 12/22/12



Percentage of ILI visits is number of ILI visits divided by total number of daily visits.

IHS Influenza Vaccination Surveillance

- As of 12/22/2012, sites reporting to the IIAS have administered 321,153 doses of seasonal influenza vaccine. Coverage estimates below exclude sites that did not provide Active Clinical User denominator data.



Influenza Vaccination Coverage by Age Group*

Age Group	Active Clinical Population**	Seasonal Flu Vaccine (At least 1 Dose)***	% Seasonal Flu (At least 1 Dose)	Seasonal Flu Vaccine (At least 2 Doses)	% Seasonal Flu (At least 2 Doses)	Total #Doses Administered****
0 - 5 months	5,271	327	6.2	48	0.9	376
6 - 23 months	26,277	11,994	45.6	2,577	9.8	14,857
2 - 4 years	65,394	17,466	26.7	576	0.9	18,548
5 - 17 years	227,113	62,491	27.5	732	0.3	65,753
18 - 49 years	483,785	106,324	22.0	1,174	0.2	110,967
50 - 64 years	176,808	64,316	36.4	802	0.5	67,434
65 + years	96,345	41,283	42.8	661	0.7	43,594
Children (6 months-17 years)	318,784	91,951	28.8	3,885	1.2	99,158
Adults (18 + years)	756,938	211,923	28.0	2,637	0.3	221,995
All (6 months +)	1,075,722	303,874	28.2	6,522	0.6	321,153

* Limited to sites that exported both doses administered and active clinical population data.

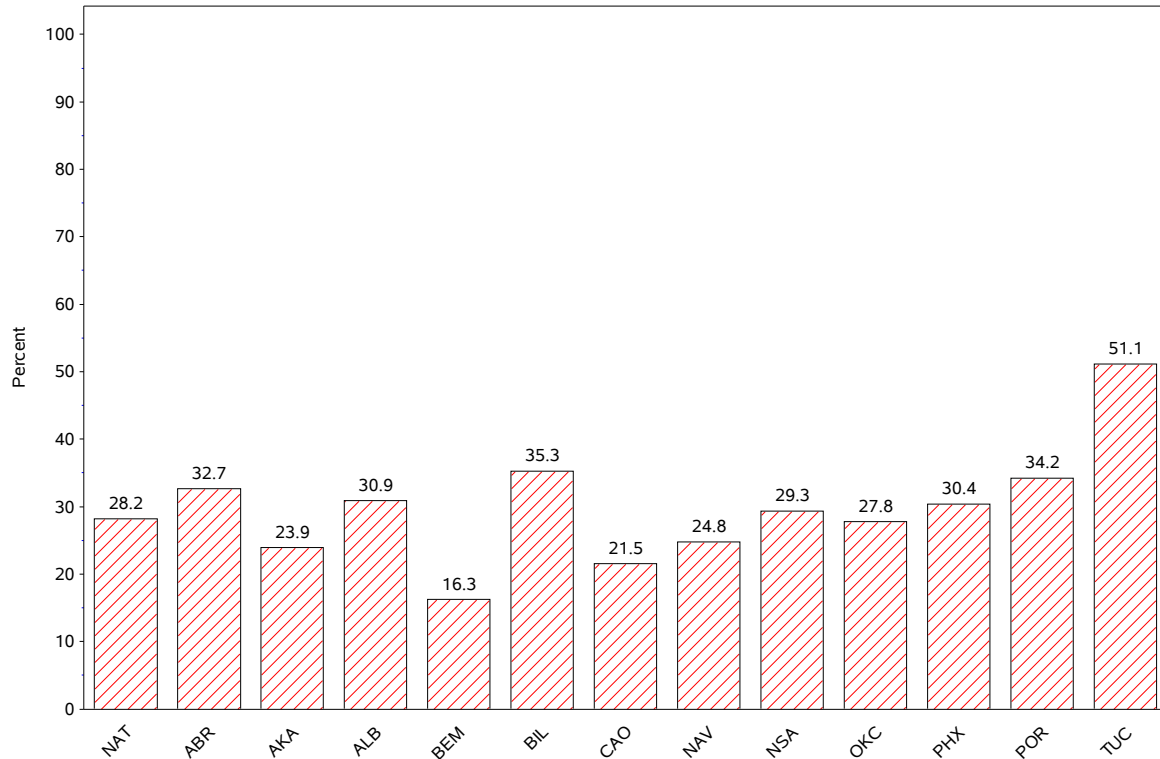
** Active Clinical is defined as patients who have had a least 2 visits in the last 3 years.

*** Number of unique patients with at least 1 dose.

**** Total # Doses Administered = All doses administered to patients including doses not included in coverage calculation due to lack of Active Clinical Population data.

Influenza Vaccine Coverage by IHS Area – 1 dose, 6 Months and older

All IHS Areas
Influenza Vaccine Coverage by Age Groups - All (6 months +)
for National and Area
08/01/12 to 12/22/12



Influenza Vaccination Codes

Area	CVX 15 Flu HX*	CVX 16 Flu Whole*	CVX 88 Flu NOS**	CVX 111 Flu-Nasal	CVX 135 Flu-High	CVX 140 Flu P-free	CVX 141 Flu	CVX 144 Flu-Intraderm	Proc 99.52 Vac Inf	ICD-9 V04.81 Vac Flu	CPT Billing Codes+	Cumulative # of Doses Seasonal Flu
ABR	2832	.	75	2528	266	5068	19188	19	3	1713	170	31862
AKA	272	.	12	541	56	5236	5723	54	419	57	1186	13556
ALB	1136	.	230	1293	469	3313	13174	146	.	184	180	20125
BEM	197	5	229	447	30	1350	6318	3	.	525	61	9165
BIL	111	.	131	2340	527	9427	8701	6	.	182	181	21606
CAO	389	.	192	1189	527	2491	11313	798	.	261	222	17382
NSA	3908	13	282	511	13	2088	3347	138	.	249	121	10670
NAV	118	.	207	1419	35	4931	52418	5	21	179	704	60037
OKC	12226	5	1701	3479	1439	13932	43783	348	70	1150	543	78676
PHX	871	.	143	2581	522	14591	24135	56	5	330	499	43733
POR	182	1	478	1702	223	3535	15117	89	.	270	346	21943
TUC	3	.	13	47	1	4547	2236	.	1	152	89	7089
	22245	24	3693	18077	4108	70509	205453	1662	519	5252	4302	335844

Exporting Databases and Facilities.

IHS Area	# of RPMS Databases Reporting*	# of Facilities Reporting**
NATIONAL	148	325
ABERDEEN	17	29
ALASKA	7	58
ALBUQUERQUE	6	8
BEMIDJI	3	9
BILLINGS	13	26
CALIFORNIA	20	40
NASHVILLE	15	19
NAVAJO	6	27
OKLAHOMA	21	42
PHOENIX	17	34
PORTLAND	22	27
TUCSON	1	6

* Exporting databases may include data from multiple facilities.

** Includes only facility categories: Hospital, Health Center, Health Station, Health Location, Alaska Village Clinic.