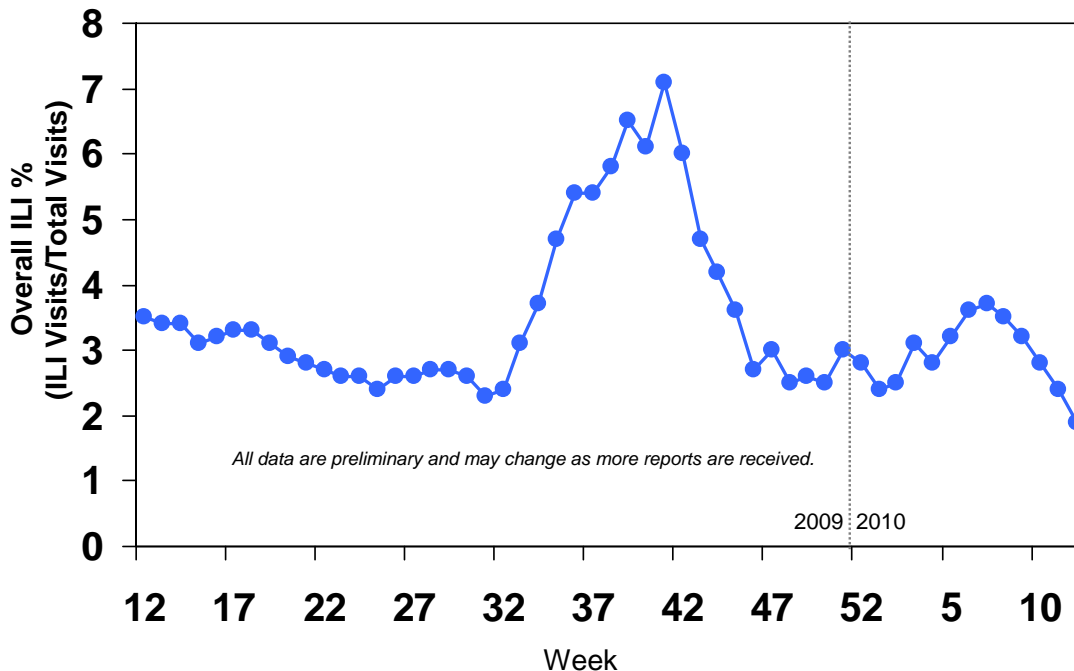


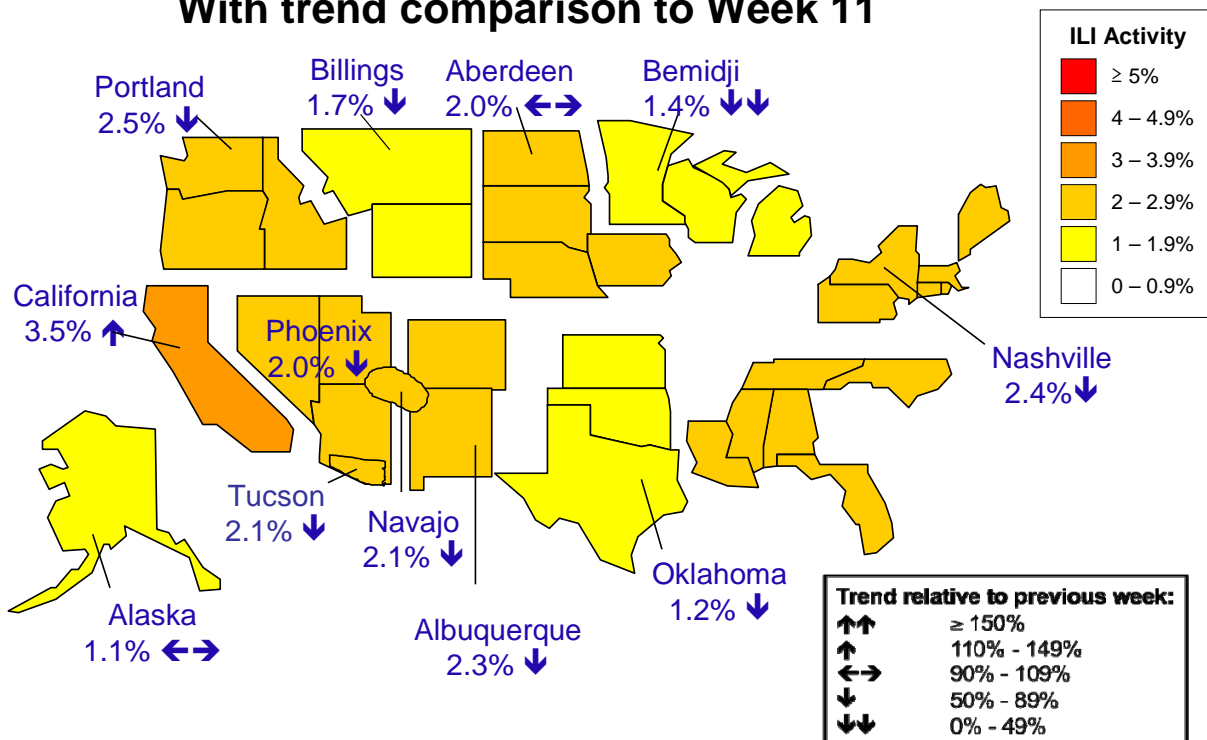


**Indian Health Service**  
**Division of Epidemiology and Disease Prevention**  
**2009 Influenza A (H1N1) Surveillance Report**  
**IHS Influenza Awareness System (IIAS)**  
**#26 (Reporting Period: 3/21/10 – 3/27/10)**

**H1N1 ILI Surveillance**  
**Percentage of Visits for Influenza-Like Illness (ILI) in IHS,**  
**Weeks 12 (3/22/09 – 3/28/09) through 12 (3/21/10 – 3/27/10)**



**% of Visits for ILI by Area, Week 12**  
**With trend comparison to Week 11**

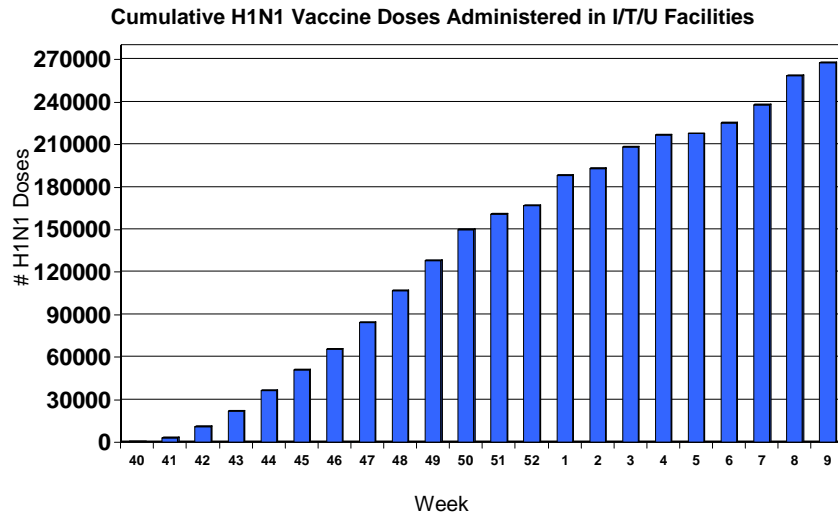


Summary of ILI Surveillance in IHS:

- *ILI definition, based on uploaded RPMS data: [influenza-specific ICD-9 code] or [measured temp > 100F and presence of at least 1 of 24 ILI ICD-9 codes].*
- Approximately 60% of IHS facilities are reporting and have their data included in this report.

**H1N1 Vaccination Surveillance**

Data from IIAS Reporting Period #23 is being re-reported due to a data problem.



**Table 1: Cumulative H1N1 Vaccine Doses Administered by IHS Area**

IHS Area	# H1N1 doses
Aberdeen	18,228
Alaska	18,065
Albuquerque	15,813
Bemidji	6,076
Billings	18,384
California	17,141
Nashville	5,921
Navajo	70,330
Oklahoma	36,643
Phoenix	33,975
Portland	18,692
Tucson	8,691
Unknown	9
<b>Total Number of Doses</b>	<b>267,968</b>

**Table 2: Number of H1N1 Vaccine Doses by Age Group**

Age Group	# H1N1 doses
<i>* &lt; 5 years</i>	<i>53,490</i>
<i>* 5-24 years</i>	<i>96,852</i>
<i>* 25-64 years high risk</i>	<i>37,111</i>
25 – 64 no high risk condition	62,192
65+ years	18,323
<b>Total Number of Doses</b>	<b>267,968</b>

*\*Red denotes an initial target group for H1N1 vaccine. People in other groups who received vaccine may have fallen into one of the other target groups not included here: Household contacts of those < 6 months old and Healthcare Personnel.*

Summary of H1N1 vaccine events:

- All IHS Areas are currently administering H1N1 vaccine. A total of 267,968 H1N1 vaccine doses have been administered by I/T/U facilities (Table 1)
- With vaccination open to all beneficiaries, I/U/T H1N1 vaccination rates continue to exceed 70% in the initial vaccine target groups: People 6 months – 24 years of age and people 25 – 64 years with a high risk medical condition (Table 2).
- 6,362 doses of H1N1 vaccine have been administered to pregnant women.
- More than 21,000 doses of H1N1 vaccines for personnel employed in I/T/U facilities have been distributed by the IHS National Supply Service Center (NSSC). Sites needing additional H1N1 flu vaccine for employees should work with their Area CMO to place an order with the NSSC.
- IHS is partnering with FDA and CDC to monitor H1N1 vaccine safety.
- There have been no unexpected adverse events from the H1N1 vaccine in IHS patients.

### **H1N1 Communication and Education**

Summary of Communication and Education activities:

- Please visit <http://www.ihs.gov/H1N1> for information about H1N1 activities and Indian Country.
- The Department of Health and Human Services has started the After Action Report process for the H1N1 response. The report, *America Responds An HHS 2009-H1N1 Influenza Retrospective to Advance All Hazards Preparedness*, will be available later this year.

### **H1N1 Mitigation Measures**

Summary of response and mitigation efforts:

- If locations need anti-virals or N-95 respirators, please place an order to the National Supply Service Center through your respective Area Emergency Management Point of Contact.
- Continue a strong push for community vaccinations.

### **H1N1 Summary**

Key Points:

- We will need to remain vigilant for a return of H1N1-related disease in IHS, and continue to work very hard to get our population and health care workers vaccinated, because it is unknown whether H1N1 will again emerge.