



RESOURCE AND PATIENT MANAGEMENT SYSTEM

Electronic Prescribing of Controlled Substances

(BEPC)

Installation Guide and Release Notes

Version 1.0
August 2019
Revised October 2019

Office of Information Technology
Division of Information Resource Management
Albuquerque, New Mexico

Table of Contents

1.0	Release Notes	1
2.0	Installation Notes.....	2
2.1	Required Resources.....	2
2.2	Package Requirements	2
3.0	Installation Instructions	3
3.1	EPCS Pre-Configuration Steps and Considerations.....	3
3.2	Pre-Installation Instructions	3
3.3	Application-Specific Installs	4
3.3.1	ePRESCRIBING (BEPR) v2.0 Patch 1 (XML).....	4
3.3.2	HEALTH LEVEL SEVEN (HL) v1.6 Patch 1007 (KIDS).....	6
3.3.3	KERNEL v8.0 Patch 1019	10
3.3.4	IHS USER SECURITY AUDIT (BUSA) v1.0 Patch 1 (KIDS).....	14
3.3.5	CONTROLLED SUBSTANCES (PSD) v3.0 Patch 23 (KIDS)	18
3.3.6	IHS PHARMACY MODIFICATIONS (APSP) v7.0 Patch 1023	27
3.3.7	EHR v1.1 Patch 25 (Repository Updater).....	33
3.3.8	EHR v1.1 Patch 25 (KIDS)	36
3.3.9	EPCS Monitoring Service	51
3.4	Post-Installation Configuration.....	56
	Glossary.....	57
	Acronym List.....	58
	Contact Information	59

Preface

The purpose of this document is to instruct Indian Health Service (IHS) site managers on how to install all the components of the Electronic Prescribing of Controlled Substances (EPCS) application. EPCS required changes to several applications and all these patches will need to be installed at the same time to make EPCS work properly. By combining the information from the separate patch notes into one document, the site manager should be able to install EPCS in the quickest and most efficient manner possible.

1.0 Release Notes

These patches/releases contain modifications required for EPCS. Please review the notes file for each of the releases in the EPCS bundle for a description of the changes related to EPCS.

The Electronic Health Record (EHR) application containing the new EPCS functionality has been certified by the Drug Enforcement Administration (DEA) and in accordance with Title 21 CFR Subpart 1311 and should not be modified without recertification.

2.0 Installation Notes

2.1 Required Resources

2.2 Package Requirements

Table 2-1: EPCS Installation Package Requirements

Module	Minimum Version
APSP	Version 1.1 Patch 1022
AVA	Version 93.2 Patch 24
BEPR	Version 2.0: This patch is only required if your site has one or more ePrescribing Ensemble namespaces and is currently a participating member of the IHS ePrescribing network that sends transmissions to Surescripts. If you do not meet these requirements, do not install this patch.
BUSA	Version 1.0
EHR	Version 1.1 Patch 24
FileMan	Version 22 Patch 1018
Kernel	Version 8.0 Patch 1018
HL7	Version 1.6 Patch 1006
PSD	Version 3.0 Patch 67

3.0 Installation Instructions

All patches should be installed into a test account if possible and tested prior to installation into a production account.

3.1 EPCS Pre-Configuration Steps and Considerations

It is suggested that the following steps be done in advance of the installation of the EPCS releases.

- All providers who will order controlled substances need a Department of Veterans Affairs (VA) number or a DEA number with a valid DEA Expiration Date. Prior to installation, sites should validate the DEA Number, DEA Expiration Date, and VA numbers for all internal providers to prevent failed orders.
- The DEA schedules assigned to internal provider should be checked for accuracy.
- The mail group coordinator for the BEHO EPCS INCIDENT RESPONSE mail group should be identified as this user will need to be entered as part of the installation of the EHR patch.
- If your site has quick orders set up for providers to dispense take-home medications after hours, validate that these quick orders are setup with pickup location equal to 'Clinic' to prevent triggering the Hardcopy prescription prompt in the Pharmacy package.
- Make sure all controlled substances have the correct National Drug Code (NDC) and DEA Schedule entered in the DRUG file and have been properly matched to the NATIONAL DRUG FILE.

3.2 Pre-Installation Instructions

Before installing any of the release below, please note the following:

- Review this entire manual, especially the pre-installation instructions for each patch, as well as the patch notes for each patch.
- Make a copy of all distribution files for offline storage.
- When installing any of the patches, capture the terminal output during the installation using an auxport printer attached to the terminal where the software installation is performed to ensure a printed audit trail if any problems should arise.
- As with any patch you apply to your system, you should do a full system backup immediately prior to the patch installation. It is imperative that you are sure that the backup finished completely, and that should the need arise, you can restore from the backup.

- The Kernel patch installation requires that all users be off the system, and the EHR repository and patch installations require that the EHR users be off the systems. While the other patch installations do not have this requirement, it is suggested that all users be off the system for the entire EPCS installation. The one exception is the installation of the EPCS Monitoring Service (the last install). Since this is a new Windows service and will not impact any existing users, users can be allowed back on the system prior to this install.
- All of the releases below are required before EPCS can be configured and run. Do not configure or enable EPCS until all of the releases are installed.
- The EPCS release consists of the following releases:
 - BEPR v2.0 p1
 - HL v1.6 p1007
 - XU v8.0 p1019
 - BUSA v1.0 p1
 - PSD v3.0 p23
 - APSP v7.0 p1023
 - EHR v1.1 p25

These releases are meant to be installed together and in the order indicated in Section 3.3. If only some, but not all, of the releases are installed, this could cause errors or incorrect processing of medication orders and prescriptions. The two exceptions to installing all releases together are indicated below.

- BEPR v2.0 p1: This release is only needed by a site that has one or more ePrescribing Ensemble namespaces and is currently a participating member of the IHS ePrescribing network that sends transmissions to Surescripts. If you do not meet these requirements, do not install this patch.
- BUSA v1.0 p1: For sites that upgrade to HealthShare 2017 prior to installing EPCS, BUSA v1.0 p1 can be installed as a stand-alone patch without the other EPCS patches. This will allow installation of BUSA v1.0 p2, which is needed as part of HealthShare 2017 upgrade.

3.3 Application-Specific Installs

3.3.1 ePRESCRIBING (BEPR) v2.0 Patch 1 (XML)

This patch should only be installed if your site has one or more ePrescribing Ensemble namespaces and is currently a participating member of the IHS ePrescribing network that sends transmissions to Surescripts. If you do not meet these requirements, do not install this patch.

3.3.1.1 Contents of Distribution

Table 3-1: ePRESCRIBING file list

File	Description
bepr0200.01.xml	Ensemble installation file
bepr0200.01n	Installation notes

3.3.1.2 Required Patches

- eRx 2.0 Ensemble production

3.3.1.3 Pre-Installation Instruction

This patch should only be installed if your site has one or more ePrescribing Ensemble namespaces and is currently a participating member of the IHS ePrescribing network that sends transmissions to Surescripts. If you do not meet these requirements, do not install this patch.

3.3.1.4 Sample Installation

In each ePrescribing Ensemble namespace, do the following:

1. Stop the ePrescribing Ensemble production.
2. Install the Ensemble XML file.
 - a. Open Ensemble Studio. Change to the ePrescribing 2.0 namespace that corresponds to your RPMS namespace by selecting **File | Change Namespace**. Note that the ePrescribing 2.0 namespace(s) are usually prefixed with **ERX2**. Verify that you are connected to the correct Ensemble instance listed in the **Server** box.
 - b. To change to another Ensemble instance, click the **Connect...** button, select the instance from the **Server Connection** dialog, and click **OK**. Select the namespace from the **Cache Connection Manager** dialog and click **OK**.
 - c. Import the patch by selecting **Tools | Import Local**. In the **Open** dialog, select the import file named **bepr0200.01.xml** and click **Open**.
 - d. In the **Import** dialog, ensure that all import items are checked, and the **Compile Imported Items** check box is checked. Click **OK** to import the patch.
3. Restart the ePrescribing Ensemble production.

3.3.1.5 Post-Installation Instructions

None.

3.3.2 HEALTH LEVEL SEVEN (HL) v1.6 Patch 1007 (KIDS)

3.3.2.1 Contents of Distribution

Table 3-2: HEALTH LEVEL SEVEN v1.6 Patch 1007 file list

File	Description
hl__0160.1007k	Patch 1007 KIDS file
hl__0160.1007n	Patch 1007 Notes file

3.3.2.2 Required Patches

- XU*8.0*1018 or later
- DI*22.0*1018 or later
- HL*1.6*1006

3.3.2.3 Pre-Installation Instructions

Use the **TaskMan Schedule/Unschedule** option to review the scheduling of the **Purge Messages** option [HL PURGE TRANSMISSIONS]. The **Purge Messages** option should not be scheduled to run during installation of this patch.

1. To reach the options in the steps below, select the **HL7 Main Menu** [HL MAIN] and then the **Filer and Link Management** [HL MENU FILER LINK MGT] submenu.
2. Stop all background processes (logical links and incoming and outgoing filers) using the **Stop All Messaging Background Processes** [HL STOP ALL].
3. Stop the link manager using the **TCP Link Manager Start/Stop** [HL START/STOP LINK MANAGER] menu option.
4. Make sure all messages have been transmitted. Run the **Systems Link Monitor** [HL MESSAGE MONITOR] option and verify that **Messages To Send** is equal to **Messages Sent** for all Logical Links.
5. Stop any incoming filers by using the **Monitor, Start, Stop Filer** [HL FILER MONITOR] option and selecting the **-I** option (see Figure 3-1).

```
Select HL7 Main Menu Option: FILER and Link Management Options
SM      Systems Link Monitor
FM      Monitor, Start, Stop Filers
LM      TCP Link Manager Start/Stop
SA      Stop All Messaging Background Processes
RA      Restart/Start All Links and Filers
DF      Default Filers Startup
SL      Start/Stop Links
PI      Ping (TCP Only)
```

```

      ED      Link Edit
      ER      Link Errors ...

Select Filer and Link Management Options Option: MONitor, Start, Stop
Filers

Task Number of      Asked      Time
Incoming Filer      To Stop    Last Known Date/Time  Difference
403306              No         08-DEC-03 @ 14:49:04  0 Day  00 Hr  00 Min
      [End of list - total of 1]

Task Number of      Asked      Time
Outgoing Filer      To Stop    Last Known Date/Time  Difference
** No outgoing filers are running **

(+I)Start incoming filer (-I)Stop incoming filer (*I)Delete incoming fil
(+O)Start outgoing filer (-O)Stop outgoing filer (*O)Delete outgoing fil
(N) Next 4 lines in list (B) Back 4 lines in list (Q) Quit
Type selection:

```

Figure 3-1: Filer and Link Management Options

3.3.2.4 Sample Installation

Use the **Kernel Installation & Distribution System (KIDS)** [XPD MAIN] menu to load (option **1**) and install (option **6**) the following KIDS builds. Verify each load using option **2** on the **KIDS Installation** menu to ensure that the transport file is not corrupt. Consider using options **3** and **4** on the **KIDS Installation** menu to print and compare the Transport global.

Figure 3-2 shows a sample load and installation of **hl__0160.1007k**.

```

Select Kernel Installation & Distribution System <TEST ACCOUNT> Option: installation

1      Load a Distribution
2      Verify Checksums in Transport Global
3      Print Transport Global
4      Compare Transport Global to Current System
5      Backup a Transport Global
6      Install Package(s)
      Restart Install of Package(s)
      Unload a Distribution

Select Installation <TEST ACCOUNT> Option: 1  Load a Distribution
Enter a Host File: D:\RPMS\hl__0160.1007k

KIDS Distribution saved on Apr 23, 2018@13:09:10
Comment: HL v1.6 Patch 1007

This Distribution contains Transport Globals for the following Package(s):
  HL*1.6*1007
Distribution OK!

Want to Continue with Load? YES//
Loading Distribution...

  HL*1.6*1007
Use INSTALL NAME: HL*1.6*1007 to install this Distribution.

```

- 1 Load a Distribution
- 2 Verify Checksums in Transport Global
- 3 Print Transport Global
- 4 Compare Transport Global to Current System
- 5 Backup a Transport Global
- 6 Install Package(s)
Restart Install of Package(s)
Unload a Distribution

Select Installation <TEST ACCOUNT> Option: 2 Verify Checksums in Transport Global
Select INSTALL NAME: HL*1.6*1007 Loaded from Distribution 10/2/18@08:51:22

=> HL v1.6 Patch 1007 ;Created on Apr 23, 2018@13:09:10

This Distribution was loaded on Oct 02, 2018@08:51:22 with header of
HL v1.6 Patch 1007 ;Created on Apr 23, 2018@13:09:10
It consisted of the following Install(s):
HL*1.6*1007

Want each Routine Listed with Checksums: Yes// YES
DEVICE: HOME//

PACKAGE: HL*1.6*1007 Oct 02, 2018 8:51 am PAGE 1

HLOPBLD Calculated 13634956

1 Routine checked, 0 failed.

- 1 Load a Distribution
- 2 Verify Checksums in Transport Global
- 3 Print Transport Global
- 4 Compare Transport Global to Current System
- 5 Backup a Transport Global
- 6 Install Package(s)
Restart Install of Package(s)
Unload a Distribution

Select Installation <TEST ACCOUNT> Option: 6 Install Package(s)
Select INSTALL NAME: HL*1.6*1007 Loaded from Distribution 10/2/18@08:51:22

=> HL v1.6 Patch 1007 ;Created on Apr 23, 2018@13:09:10

This Distribution was loaded on Oct 02, 2018@08:51:22 with header of
HL v1.6 Patch 1007 ;Created on Apr 23, 2018@13:09:10
It consisted of the following Install(s):
HL*1.6*1007

Checking Install for Package HL*1.6*1007

Install Questions for HL*1.6*1007

Want KIDS to INHIBIT LOGONS during the install? YES//
Want to DISABLE Scheduled Options, Menu Options, and Protocols? YES//

Enter options you wish to mark as 'Out Of Order':

Enter protocols you wish to mark as 'Out Of Order':

Delay Install (Minutes): (0-60): 0//

```
Enter the Device you want to print the Install messages.
You can queue the install by enter a 'Q' at the device prompt.
Enter a '^' to abort the install.

DEVICE: HOME//

Install Started for HL*1.6*1007 :
      Oct 02, 2018@08:51:39

Build Distribution Date: Dec 20, 2017

Installing Routines:
      Oct 02, 2018@08:51:39

Updating Routine file...

Updating KIDS files...

HL*1.6*1007 Installed.
      Oct 02, 2018@08:51:39

Install Completed
```

Figure 3-2: Sample HL installation

3.3.2.5 Post-Installation Instructions

For the steps below, start from the **Filer And Link Management** option on the **HL7 Main Menu** [HL MAIN].

1. Start up all HL7 Logical Links and incoming and outgoing filers using the **Restart/Start All Links and Filers** [HL TASK RESTART] option. (Note that links that do not have “autostart” enabled will need to be restarted manually.)
2. Use the **TCP Link Manager Start/Stop** [HL START/STOP LINK MANAGER] option to start the HL7 Link Manager.
3. Use the **TaskMan Schedule/Unschedule** option to review the scheduling of the **Purge Messages** [HL PURGE TRANSMISSIONS] option.

Because the new Fast Purge will purge most HL7 messages on a regular basis throughout the day, the **HL Purge Transmissions** option should be scheduled to run less often. Once per week during off-hours is recommended for most sites.

Note: The Fast Purge does not begin purging messages for about one week after installation of this patch because it relies on a new index that must be populated. Schedule this option to start one week following installation.

3.3.3 KERNEL v8.0 Patch 1019

This patch is a multi-patch build designed to update the KERNEL (XU) application with a VA patch and an IHS patch that are necessary to implement the Electronic Prescribing of Controlled Substances (EPCS) functionality. Please see **xu__0800.1019n1** and **xu__0800.1019n2** for further details.

3.3.3.1 Contents of Distribution

Table 3-3: KERNEL Patch 1019 file list

File	Description
xu__0800.1019k	Patch 1019 KIDS file
xu__0800.1019n1	Patch 1019 IHS Notes file
xu__0800.1019n2	Patch 1019 VA Notes file

3.3.3.2 Required Patches

- XU*8.0*1018
- DI*22.0*1018 or later

3.3.3.3 Pre-Installation Instruction

Make backup copies of the XQ* and XU* routines prior to loading this patch. These copies can be deleted once it is determined that the patch is operating as expected.

Note: This installation requires that EHR and RPMS users be logged off of the system.

3.3.3.4 Sample Installation

Use the **Kernel Installation & Distribution System (KIDS)** menu [XPD MAIN] to load (option 1) and install (option 6) the following KIDS builds. Verify each load using option 2 on the **KIDS Installation** menu to ensure that the transport file is not corrupt. Consider using options 3 and 4 on the **KIDS Installation** menu to print and compare the Transport global.

Figure 3-3 shows a sample load and install of **xu__0800.1019k**.

```
Select OPTION NAME: XPD MAIN          Kernel Installation & Distribution System

Edits and Distribution ...
Utilities ...
Installation ...
Patch Monitor Main Menu ...

Select Kernel Installation & Distribution System <TEST ACCOUNT> Option:
Installation
```

- 1 Load a Distribution
- 2 Verify Checksums in Transport Global
- 3 Print Transport Global
- 4 Compare Transport Global to Current System
- 5 Backup a Transport Global
- 6 Install Package(s)
Restart Install of Package(s)
Unload a Distribution

Select Installation <TEST ACCOUNT> Option: 1 Load a Distribution
Enter a Host File: D:\RPMS\xu__0800.1019k

KIDS Distribution saved on Aug 02, 2018@16:06:21
Comment: XU*8.0*1019

This Distribution contains Transport Globals for the following Package(s):

XU*8.0*1019
XU-BUSA*8.0*1019
XU*8.0*609

Distribution OK!

Want to Continue with Load? YES//
Loading Distribution...

Build XU*8.0*1019 has an Environmental Check Routine
Want to RUN the Environment Check Routine? YES//
XU*8.0*1019
Will first run the Environment Check Routine, XU8P1019

Hello, ADMIN USER EPCS

Checking Environment for KERNEL V 8.0 Patch **1019**.
Patch "XU*8.0*1018" is installed.

ENVIRONMENT OK.

Enter RETURN to continue or '^' to exit:

XU-BUSA*8.0*1019
XU*8.0*609

Use INSTALL NAME: XU*8.0*1019 to install this Distribution.

- 1 Load a Distribution
- 2 Verify Checksums in Transport Global
- 3 Print Transport Global
- 4 Compare Transport Global to Current System
- 5 Backup a Transport Global
- 6 Install Package(s)
Restart Install of Package(s)
Unload a Distribution

Select Installation <TEST ACCOUNT> Option: 2 Verify Checksums in Transport Global
Select INSTALL NAME: XU*8.0*1019 Loaded from Distribution 10/2/18@10:57
:29

=> XU*8.0*1019 ;Created on Aug 02, 2018@16:06:21

This Distribution was loaded on Oct 02, 2018@10:57:29 with header of
XU*8.0*1019 ;Created on Aug 02, 2018@16:06:21
It consisted of the following Install(s):
XU*8.0*1019XU-BUSA*8.0*1019 XU*8.0*609

```

Want each Routine Listed with Checksums: Yes//   YES
DEVICE: HOME//

PACKAGE: XU*8.0*1019      Oct 02, 2018 10:57 am          PAGE 1
-----

XU8P1019  Calculated      10750016

      1 Routine checked, 0 failed.

PACKAGE: XU-BUSA*8.0*1019  Oct 02, 2018 10:57 am          PAGE 1
-----

XQ          Calculated      25298761
XQ1         Calculated      40430401
XQ12        Calculated      74009138
XUP          Calculated      13819414
XUS          Calculated      39120780
XUS2         Calculated      65282033
XUSBUSA     Calculated      166352890
XUSBUSAD    Calculated          12390
XUSER       Calculated      48797593

      9 Routines checked, 0 failed.

PACKAGE: XU*8.0*609      Oct 02, 2018 10:57 am          PAGE 1
-----

XUSER       Calculated      48797593

      1 Routine checked, 0 failed.

      1      Load a Distribution
      2      Verify Checksums in Transport Global
      3      Print Transport Global
      4      Compare Transport Global to Current System
      5      Backup a Transport Global
      6      Install Package(s)
             Restart Install of Package(s)
             Unload a Distribution

Select Installation <TEST ACCOUNT> Option: 6  Install Package(s)
Select INSTALL NAME: XU*8.0*1019      Loaded from Distribution      10/2/18@10:57
:29
=> XU*8.0*1019 ;Created on Aug 02, 2018@16:06:21

This Distribution was loaded on Oct 02, 2018@10:57:29 with header of
XU*8.0*1019 ;Created on Aug 02, 2018@16:06:21
It consisted of the following Install(s):
XU*8.0*1019XU-BUSA*8.0*1019      XU*8.0*609
Checking Install for Package XU*8.0*1019
Will first run the Environment Check Routine, XU8P1019

Hello, ADMIN USER EPCS

Checking Environment for KERNEL V 8.0 Patch **1019**.
Patch "XU*8.0*1018" is installed.

ENVIRONMENT OK.

```

```
Enter RETURN to continue or '^' to exit:
Install Questions for XU*8.0*1019
Checking Install for Package XU-BUSA*8.0*1019
Install Questions for XU-BUSA*8.0*1019
Incoming Files:
    200      NEW PERSON  (Partial Definition)
Note: You already have the 'NEW PERSON' File.
    8980.2   PKI Digital Signatures  (Partial Definition)
Note: You already have the 'PKI Digital Signatures' File.
    8991.6   XUEPCS DATA
Note: You already have the 'XUEPCS DATA' File.
Checking Install for Package XU*8.0*609
Install Questions for XU*8.0*609
Want KIDS to INHIBIT LOGONs during the install? NO//
Want to DISABLE Scheduled Options, Menu Options, and Protocols? NO//
Enter the Device you want to print the Install messages.
You can queue the install by enter a 'Q' at the device prompt.
Enter a '^' to abort the install.
DEVICE: HOME//
Install Started for XU*8.0*1019 :
      Oct 02, 2018@10:57:51
Build Distribution Date: Aug 02, 2018
Installing Routines:
      Oct 02, 2018@10:57:51
Install Started for XU-BUSA*8.0*1019 :
      Oct 02, 2018@10:57:51
Build Distribution Date: Aug 02, 2018
Installing Routines:
      Oct 02, 2018@10:57:51
Installing Data Dictionaries: ..
      Oct 02, 2018@10:57:51
Installing PACKAGE COMPONENTS:
Installing SECURITY KEY
      Oct 02, 2018@10:57:51
Updating Routine file...
Updating KIDS files...
```



```

XU-BUSA*8.0*1019 Installed.
      Oct 02, 2018@10:57:51

NO Install Message sent

Install Started for XU*8.0*609 :
      Oct 02, 2018@10:57:51

Build Distribution Date: Aug 02, 2018

Installing Routines:
      Oct 02, 2018@10:57:51

Updating Routine file...

Updating KIDS files...

XU*8.0*609 Installed.
      Oct 02, 2018@10:57:51

NO Install Message sent

Running Post-Install Routine: POST^XU8P1019

      Beginning XU v8.0 patch 1019 post-init process.

Delivering XU*8.0*1019 install message to select users...

Updating Routine file...

Updating KIDS files...

XU*8.0*1019 Installed.
      Oct 02, 2018@10:57:51

Install Completed

```

Figure 3-3: Sample Kernel installation

3.3.4 IHS USER SECURITY AUDIT (BUSA) v1.0 Patch 1 (KIDS)

3.3.4.1 Contents of Distribution

Table 3-4: IHS USER SECURITY AUDIT Patch 1 file list

File	Description
busa0100.01k	Patch 1 kids file
busa0100.01n	Patch 1 notes file
busa0100.01u.pdf	Version 1.0 Patch 1 User Guide
busa010t.pdf	Version 1.0 Technical Guide

3.3.4.2 Required Patches

- XU*8.0*1018 or later
- DI*22.0*1018 or later
- IHS USER SECURITY AUDIT 1.0

3.3.4.3 Pre-Installation Instructions

This installation does require that EHR and RPMS users be logged off the system. The KIDS installation will take less than one minute to complete.

3.3.4.4 Sample Installation

1. While logged into your production UCI in programmer mode, use the Kernel V8.0 **Kernel Installation and Distribution Systems (KIDS)** menu option to load the patch and run Verify Checksums in Transport Global using option **2** in the **KIDS Installation** menu.
2. Install the **busa0100.01k** file using the Kernel V8.0 **KIDS** menu while logged into your production UCI in programmer mode. Once you start the install, you must let it run to completion. (See Figure 3-4 for an example of the KIDS load and install.)

```
Select OPTION NAME: XPD MAIN           Kernel Installation & Distribution System

      Edits and Distribution ...
      Utilities ...
      Installation ...
      Patch Monitor Main Menu ...

Select Kernel Installation & Distribution System <TEST ACCOUNT> Option: Installation

1      Load a Distribution
2      Verify Checksums in Transport Global
3      Print Transport Global
4      Compare Transport Global to Current System
5      Backup a Transport Global
6      Install Package(s)
      Restart Install of Package(s)
      Unload a Distribution

Select Installation <TEST ACCOUNT> Option: 1  Load a Distribution
Enter a Host File: D:\RPMS\busa0100.01k

KIDS Distribution saved on Aug 24, 2018@12:12:38
Comment: BUSA*1.0*1

This Distribution contains Transport Globals for the following Package(s):
  BUSA*1.0*1
Distribution OK!

Want to Continue with Load? YES//
Loading Distribution...
```

```

Build BUSA*1.0*1 has an Environmental Check Routine
Want to RUN the Environment Check Routine? YES//
  BUSA*1.0*1
Will first run the Environment Check Routine, BUSA1P01

Use INSTALL NAME: BUSA*1.0*1 to install this Distribution.

  1      Load a Distribution
  2      Verify Checksums in Transport Global
  3      Print Transport Global
  4      Compare Transport Global to Current System
  5      Backup a Transport Global
  6      Install Package(s)
          Restart Install of Package(s)
          Unload a Distribution

Select Installation <TEST ACCOUNT> Option: 2  Verify Checksums in Transport Global
Select INSTALL NAME:      BUSA*1.0*1      Loaded from Distribution      10/2/18@08:50:26
=> BUSA*1.0*1 ;Created on Aug 24, 2018@12:12:38

This Distribution was loaded on Oct 02, 2018@08:50:26 with header of
  BUSA*1.0*1 ;Created on Aug 24, 2018@12:12:38
It consisted of the following Install(s):
  BUSA*1.0*1

Want each Routine Listed with Checksums: Yes//  YES
DEVICE: HOME//

PACKAGE: BUSA*1.0*1      Oct 02, 2018 8:50 am      PAGE 1
-----

BUSA1P01  Calculated      924768
BUSAAPI   Calculated      30539341
BUSACLAS  Calculated      21482164

  3 Routines checked, 0 failed.

  1      Load a Distribution
  2      Verify Checksums in Transport Global
  3      Print Transport Global
  4      Compare Transport Global to Current System
  5      Backup a Transport Global
  6      Install Package(s)
          Restart Install of Package(s)
          Unload a Distribution

Select Installation <TEST ACCOUNT> Option: 6  Install Package(s)
Select INSTALL NAME:      BUSA*1.0*1      Loaded from Distribution      10/2/18@08:50:26
=> BUSA*1.0*1 ;Created on Aug 24, 2018@12:12:38

This Distribution was loaded on Oct 02, 2018@08:50:26 with header of
  BUSA*1.0*1 ;Created on Aug 24, 2018@12:12:38
It consisted of the following Install(s):
  BUSA*1.0*1
Checking Install for Package BUSA*1.0*1
Will first run the Environment Check Routine, BUSA1P01

Install Questions for BUSA*1.0*1

```



```
BUSA*1.0*1 Installed.
      Oct 02, 2018@08:50:38

Not a VA primary domain

Install Completed
```

Figure 3-4: Sample BUSA installation

3.3.5 CONTROLLED SUBSTANCES (PSD) v3.0 Patch 23 (KIDS)

This patch is a multi-patch build designed to update the PSD application with VA patches. Please see **psd_0300.23n2** for a complete description of the changes. Also see **psd_0300.23n1** for a synopsis of the patches.

3.3.5.1 Contents of Distribution

Table 3-5: CONTROLLED SUBSTANCES (PSD) Patch 23 file list

File	Description
psd_0300.23k	Patch 23 kids file
psd_0300.23n1	Patch 23 IHS notes file
psd_0300.23n2	Patch 23 VA notes files

3.3.5.2 Required Patches

- XU*8.0*1018 or later
- DI*22.0*1018 or later
- PSD*3.0*59
- PSD*3.0*62
- PSD*3.0*66
- PSD*3.0*67

3.3.5.3 Pre-Installation Instruction

Note that once the installation of this patch is done, the installation of IHS PHARMACY MODIFICATIONS (APSP) v7.0 Patch 1023, EHR v1.1 Patch 25 (KIDS), and EHR v1.1 Patch 25 (Repository Updater) must be also be done. The system may be unstable if the installation is discontinued at any point prior to the completion of EHR v1.1 Patch 25 (Repository Updater).

3.3.5.4 Sample Installation

1. Load the Distribution into KIDS using option **1** on the **KIDS Installation** menu. The distribution was released in a file named **psd_0300.23k**.
2. Verify the load using option **2** on the **KIDS Installation** menu.
3. Consider using options **3** and **4** on the **KIDS Installation** menu to print and compare the Transport global.
4. Install the distribution using option **6** on the **Installation** menu. Sites may wish to print out the install for review of errors.

```
Select Installation <TEST ACCOUNT> Option: 1  Load a Distribution
Enter a Host File: D:\RPMS\psd_0300.23k

KIDS Distribution saved on Aug 23, 2017@09:40:24
Comment: EPCS patches

This Distribution contains Transport Globals for the following Package(s):
  PSD*3.0*69
  PSD*3.0*68
  PSD*3.0*71
  PSD*3.0*76
  PSD*3.0*73
Distribution OK!

Want to Continue with Load? YES//
Loading Distribution...

  PSD*3.0*69
  PSD*3.0*68
  PSD*3.0*71
  PSD*3.0*76
  PSD*3.0*73
Use INSTALL NAME: PSD*3.0*69 to install this Distribution.

  1      Load a Distribution
  2      Verify Checksums in Transport Global
  3      Print Transport Global
  4      Compare Transport Global to Current System
  5      Backup a Transport Global
  6      Install Package(s)
         Restart Install of Package(s)
         Unload a Distribution

Select Installation <TEST ACCOUNT> Option: 2  Verify Checksums in Transport Global

Select INSTALL NAME: PSD
  1  PSD*3.0*68      Loaded from Distribution      10/11/18@13:10:32
=> EPCS patches    ;Created on Aug 23, 2017@09:40:24
  2  PSD*3.0*69      Loaded from Distribution      10/11/18@13:10:32
=> EPCS patches    ;Created on Aug 23, 2017@09:40:24
  3  PSD*3.0*71      Loaded from Distribution      10/11/18@13:10:32
=> EPCS patches    ;Created on Aug 23, 2017@09:40:24
  4  PSD*3.0*73      Loaded from Distribution      10/11/18@13:10:32
=> EPCS patches    ;Created on Aug 23, 2017@09:40:24
  5  PSD*3.0*76      Loaded from Distribution      10/11/18@13:10:32
```

```

=> EPCS patches ;Created on Aug 23, 2017@09:40:24
CHOOSE 1-5: 1 PSD*3.0*68      Loaded from Distribution      10/11/18@13:10:32
=> EPCS patches ;Created on Aug 23, 2017@09:40:24

This Distribution was loaded on Oct 11, 2018@13:10:32 with header of
EPCS patches ;Created on Aug 23, 2017@09:40:24
It consisted of the following Install(s):
PSD*3.0*68

Want each Routine Listed with Checksums: Yes//   YES
DEVICE: HOME//   VIRTUAL

PACKAGE: PSD*3.0*68      Oct 11, 2018 1:10 pm                      PAGE 1
-----

PSD68P      Calculated      13127128
PSDPAT1     Calculated      73058275
PSDPAT2     Calculated      45069536
PSDRF       Calculated      25617376

4 Routines checked, 0 failed.

1      Load a Distribution
2      Verify Checksums in Transport Global
3      Print Transport Global
4      Compare Transport Global to Current System
5      Backup a Transport Global
6      Install Package(s)
      Restart Install of Package(s)
      Unload a Distribution

Select Installation <TEST ACCOUNT> Option: 2 Verify Checksums in Transport Global
Select INSTALL NAME: PSD
1 PSD*3.0*68      Loaded from Distribution      10/11/18@13:10:32
=> EPCS patches ;Created on Aug 23, 2017@09:40:24
2 PSD*3.0*69      Loaded from Distribution      10/11/18@13:10:32
=> EPCS patches ;Created on Aug 23, 2017@09:40:24
3 PSD*3.0*71      Loaded from Distribution      10/11/18@13:10:32
=> EPCS patches ;Created on Aug 23, 2017@09:40:24
4 PSD*3.0*73      Loaded from Distribution      10/11/18@13:10:32
=> EPCS patches ;Created on Aug 23, 2017@09:40:24
5 PSD*3.0*76      Loaded from Distribution      10/11/18@13:10:32
=> EPCS patches ;Created on Aug 23, 2017@09:40:24
CHOOSE 1-5: 2 PSD*3.0*69      Loaded from Distribution      10/11/18@13:10:32
=> EPCS patches ;Created on Aug 23, 2017@09:40:24

This Distribution was loaded on Oct 11, 2018@13:10:32 with header of
EPCS patches ;Created on Aug 23, 2017@09:40:24
It consisted of the following Install(s):
PSD*3.0*69      PSD*3.0*68      PSD*3.0*71      PSD*3.0*76      PSD*3.0*73

Want each Routine Listed with Checksums: Yes//   YES
DEVICE: HOME//   VIRTUAL

PACKAGE: PSD*3.0*69      Oct 11, 2018 1:11 pm                      PAGE 1
-----

PSDDFP      Calculated      22828798
PSDDWK      Calculated      27257518
PSDESTF     Before Checksum Calculated 19797333 expected value 19562723

```

```

PSDESTF   Calculated   20769006
PSDESTO   Before Checksum Calculated 22841131 expected value 22602014
PSDESTO   Calculated   23866051
PSDLBL    Calculated   22561219
PSDLBLR   Calculated   13648116
PSDNDES   Calculated   21712676
PSDOPT    Calculated   88195048
PSDORN    Calculated   33160894
PSDPDR    Calculated   18434161
PSDPGS    Calculated   22028447
PSDPWK    Calculated   23890736
PSDRDR    Calculated   24114664
PSDREC    Calculated   19747505

```

```

PACKAGE: PSD*3.0*69      Oct 11, 2018 1:11 pm                PAGE 2
-----

```

```

PSDREPD   Calculated   35512558
PSDRPGS   Calculated   12664820
PSDRPT    Calculated   24521534
PSDRWK    Calculated   21554388

```

18 Routines checked, 0 failed.

```

PACKAGE: PSD*3.0*68      Oct 11, 2018 1:11 pm                PAGE 1
-----

```

```

PSD68P    Calculated   13127128
PSDPAT1   Calculated   73058275
PSDPAT2   Calculated   45069536
PSDRF     Calculated   25617376

```

4 Routines checked, 0 failed.

```

PACKAGE: PSD*3.0*71      Oct 11, 2018 1:11 pm                PAGE 1
-----

```

```

PSDEA41   Calculated   21543315
PSDESTP   Calculated   48187487
PSDEXGS   Calculated   21978292
PSDGRV    Calculated   26390717
PSDHRPT   Calculated   25812497
PSDNTR    Calculated   23255990
PSDOPT    Before Checksum Calculated 83861199 expected value 88195048
PSDOPT    Calculated   86888301
PSDOPT1   Calculated   23121655
PSDTRV    Calculated   17016476

```

9 Routines checked, 0 failed.

```

PACKAGE: PSD*3.0*76      Oct 11, 2018 1:11 pm                PAGE 1
-----

```

0 Routine checked, 0 failed.

```

PACKAGE: PSD*3.0*73      Oct 11, 2018 1:11 pm                PAGE 1
-----

```

```

PSDBAL    Calculated   22121079
PSDBALI   Calculated   28472924

```



```

PSDBALI1  Calculated      5019533
PSDDSOR   Calculated      86052358
PSDDSOR1  Calculated      31741433
PSDDSOR2  Calculated      23181227
PSDPLOG   Calculated      19818011
PSDPLOG1  Calculated      25428029
PSDPLOG2  Calculated      17681782
PSDPLOG3  Calculated      20151384
PSDSUBOX  Calculated      32552011

11 Routines checked, 0 failed.

1      Load a Distribution
2      Verify Checksums in Transport Global
3      Print Transport Global
4      Compare Transport Global to Current System
5      Backup a Transport Global
6      Install Package(s)
      Restart Install of Package(s)
      Unload a Distribution

Select Installation <TEST ACCOUNT> Option: 2  Verify Checksums in Transport Global
Select INSTALL NAME: PSD
1      PSD*3.0*68          Loaded from Distribution      10/11/18@13:10:32
=> EPCS patches ;Created on Aug 23, 2017@09:40:24
2      PSD*3.0*69          Loaded from Distribution      10/11/18@13:10:32
=> EPCS patches ;Created on Aug 23, 2017@09:40:24
3      PSD*3.0*71          Loaded from Distribution      10/11/18@13:10:32
=> EPCS patches ;Created on Aug 23, 2017@09:40:24
4      PSD*3.0*73          Loaded from Distribution      10/11/18@13:10:32
=> EPCS patches ;Created on Aug 23, 2017@09:40:24
5      PSD*3.0*76          Loaded from Distribution      10/11/18@13:10:32
=> EPCS patches ;Created on Aug 23, 2017@09:40:24
CHOOSE 1-5: 3 PSD*3.0*71    Loaded from Distribution      10/11/18@13:10:32
=> EPCS patches ;Created on Aug 23, 2017@09:40:24

This Distribution was loaded on Oct 11, 2018@13:10:32 with header of
EPCS patches ;Created on Aug 23, 2017@09:40:24
It consisted of the following Install(s):
PSD*3.0*71

Want each Routine Listed with Checksums: Yes//  YES
DEVICE: HOME//  VIRTUAL

PACKAGE: PSD*3.0*71      Oct 11, 2018 1:11 pm                      PAGE 1
-----

PSDEA41  Calculated      21543315
PSDESTP  Calculated      48187487
PSDEXGS  Calculated      21978292
PSDGSRV  Calculated      26390717
PSDHRPT  Calculated      25812497
PSDNTR   Calculated      23255990
PSDOPT   Before Checksum Calculated 83861199 expected value 88195048
PSDOPT   Calculated      86888301
PSDOPT1  Calculated      23121655
PSDTRV   Calculated      17016476

9 Routines checked, 0 failed.

```

- 1 Load a Distribution
- 2 Verify Checksums in Transport Global
- 3 Print Transport Global
- 4 Compare Transport Global to Current System
- 5 Backup a Transport Global
- 6 Install Package(s)
Restart Install of Package(s)
Unload a Distribution

Select Installation <TEST ACCOUNT> Option: 2 Verify Checksums in Transport Global

Select INSTALL NAME: PSD

```

1 PSD*3.0*68      Loaded from Distribution    10/11/18@13:10:32
=> EPCS patches ;Created on Aug 23, 2017@09:40:24
2 PSD*3.0*69      Loaded from Distribution    10/11/18@13:10:32
=> EPCS patches ;Created on Aug 23, 2017@09:40:24
3 PSD*3.0*71      Loaded from Distribution    10/11/18@13:10:32
=> EPCS patches ;Created on Aug 23, 2017@09:40:24
4 PSD*3.0*73      Loaded from Distribution    10/11/18@13:10:32
=> EPCS patches ;Created on Aug 23, 2017@09:40:24
5 PSD*3.0*76      Loaded from Distribution    10/11/18@13:10:32
=> EPCS patches ;Created on Aug 23, 2017@09:40:24
CHOOSE 1-5: 4 PSD*3.0*73      Loaded from Distribution    10/11/18@13:10:32
=> EPCS patches ;Created on Aug 23, 2017@09:40:24

```

This Distribution was loaded on Oct 11, 2018@13:10:32 with header of
EPCS patches ;Created on Aug 23, 2017@09:40:24
It consisted of the following Install(s):
PSD*3.0*73

Want each Routine Listed with Checksums: Yes// YES

DEVICE: HOME// VIRTUAL

PACKAGE: PSD*3.0*73 Oct 11, 2018 1:11 pm PAGE 1

```

-----
PSDBAL   Calculated   22121079
PSDBALI   Calculated   28472924
PSDBALI1  Calculated   5019533
PSDDSOR   Calculated   86052358
PSDDSOR1  Calculated   31741433
PSDDSOR2  Calculated   23181227
PSDPLOG   Calculated   19818011
PSDPLOG1  Calculated   25428029
PSDPLOG2  Calculated   17681782
PSDPLOG3  Calculated   20151384
PSDSUBOX  Calculated   32552011

```

11 Routines checked, 0 failed.

- 1 Load a Distribution
- 2 Verify Checksums in Transport Global
- 3 Print Transport Global
- 4 Compare Transport Global to Current System
- 5 Backup a Transport Global
- 6 Install Package(s)
Restart Install of Package(s)
Unload a Distribution

Select Installation <TEST ACCOUNT> Option: 2 Verify Checksums in Transport Global

Select INSTALL NAME: PSD

```

1 PSD*3.0*68      Loaded from Distribution  10/11/18@13:10:32
=> EPCS patches ;Created on Aug 23, 2017@09:40:24
2 PSD*3.0*69      Loaded from Distribution  10/11/18@13:10:32
=> EPCS patches ;Created on Aug 23, 2017@09:40:24
3 PSD*3.0*71      Loaded from Distribution  10/11/18@13:10:32
=> EPCS patches ;Created on Aug 23, 2017@09:40:24
4 PSD*3.0*73      Loaded from Distribution  10/11/18@13:10:32
=> EPCS patches ;Created on Aug 23, 2017@09:40:24
5 PSD*3.0*76      Loaded from Distribution  10/11/18@13:10:32
=> EPCS patches ;Created on Aug 23, 2017@09:40:24
CHOOSE 1-5: 5 PSD*3.0*76      Loaded from Distribution  10/11/18@13:10:32
=> EPCS patches ;Created on Aug 23, 2017@09:40:24

This Distribution was loaded on Oct 11, 2018@13:10:32 with header of
EPCS patches ;Created on Aug 23, 2017@09:40:24
It consisted of the following Install(s):
PSD*3.0*76

Want each Routine Listed with Checksums: Yes//   YES
DEVICE: HOME//   VIRTUAL

PACKAGE: PSD*3.0*76      Oct 11, 2018 1:11 pm      PAGE 1
-----

0 Routine checked, 0 failed.

1      Load a Distribution
2      Verify Checksums in Transport Global
3      Print Transport Global
4      Compare Transport Global to Current System
5      Backup a Transport Global
6      Install Package(s)
      Restart Install of Package(s)
      Unload a Distribution

Select Installation <TEST ACCOUNT> Option: 6 Install Package(s)

Select INSTALL NAME: PSD*3.0*69      Loaded from Distribution  10/11/18@13:10:32
=> EPCS patches ;Created on Aug 23, 2017@09:40:24

This Distribution was loaded on Oct 11, 2018@13:10:32 with header of
EPCS patches ;Created on Aug 23, 2017@09:40:24
It consisted of the following Install(s):
PSD*3.0*69      PSD*3.0*68      PSD*3.0*71      PSD*3.0*76      PSD*3.0*73
Checking Install for Package PSD*3.0*69

Install Questions for PSD*3.0*69

Want KIDS to Rebuild Menu Trees Upon Completion of Install? NO//

Checking Install for Package PSD*3.0*68

Install Questions for PSD*3.0*68

Checking Install for Package PSD*3.0*71

Install Questions for PSD*3.0*71

Want KIDS to Rebuild Menu Trees Upon Completion of Install? NO//

```



```
Updating KIDS files...
PSD*3.0*68 Installed.
    Oct 11, 2018@13:12:16

Not a VA primary domain
NO Install Message sent

Install Started for PSD*3.0*71 :
    Oct 11, 2018@13:12:16
Build Distribution Date: Feb 15, 2011

Installing Routines:
    Oct 11, 2018@13:12:16

Installing PACKAGE COMPONENTS:

Installing OPTION
    Oct 11, 2018@13:12:16

Updating Routine file...

Updating KIDS files...

PSD*3.0*71 Installed.
    Oct 11, 2018@13:12:16

Not a VA primary domain
NO Install Message sent

Install Started for PSD*3.0*76 :
    Oct 11, 2018@13:12:16
Build Distribution Date: Mar 25, 2013

Installing Routines:
    Oct 11, 2018@13:12:16

Installing PACKAGE COMPONENTS:

Installing SECURITY KEY
    Oct 11, 2018@13:12:16

Updating Routine file...

Updating KIDS files...

PSD*3.0*76 Installed.
    Oct 11, 2018@13:12:16

Not a VA primary domain
NO Install Message sent

Install Started for PSD*3.0*73 :
    Oct 11, 2018@13:12:16
```

```

Build Distribution Date: Mar 29, 2013

Installing Routines:
    Oct 11, 2018@13:12:16

Installing PACKAGE COMPONENTS:

Installing OPTION
    Oct 11, 2018@13:12:16

Updating Routine file...

Updating KIDS files...

PSD*3.0*73 Installed.
    Oct 11, 2018@13:12:16

Not a VA primary domain

Install Completed

```

Figure 3-5: Sample Controlled Substances (PSD) installation

3.3.6 IHS PHARMACY MODIFICATIONS (APSP) v7.0 Patch 1023

This patch contains numerous updates to the pharmacy package to handle EPCS functionality. Please see **apsp0700.23n** for a full list.

3.3.6.1 Contents of Distribution

Table 3-6: IHS PHARMACY MODIFICATIONS Patch 1023 file list

File	Description
apsp0700.23k	Patch 23 kids file
apsp0700.23n	Patch 23 notes file
apsp0700.23o_EPCS_Supplemental_User_Guide.pdf	APSP Supplemental User Guide

3.3.6.2 Required Patches

- XU*8.0*1019 or later
- DI*22.0*1018 or later
- APSP*7.0*1022
- BUSA*1.0*1
- HL*1.6*1007

3.3.6.3 Pre-Installation Instructions

Ensure all pharmacy users are logged out of the system.

3.3.6.4 Sample Installation

1. Load the Distribution into KIDS using option **1** on the **KIDS Installation** menu. The distribution was released in a file named **apsp0700.23k**.
2. Verify the checksums using option **2** on the **KIDS Installation** menu.
3. Consider using options **3** and **4** on the **KIDS Installation** menu to print and compare the Transport global.
4. Install the distribution using option **6** on the **Installation** menu. Sites may wish to print out the install for review of errors.

```

1      Load a Distribution
2      Verify Checksums in Transport Global
3      Print Transport Global
4      Compare Transport Global to Current System
5      Backup a Transport Global
6      Install Package(s)
      Restart Install of Package(s)
      Unload a Distribution

Select Installation <TEST ACCOUNT> Option: 1  Load a Distribution
Enter a Host File: D:\RPMS\apsp0700.23k

KIDS Distribution saved on Oct 11, 2018@15:28:37
Comment: APSP v7 Patch 1023

This Distribution contains Transport Globals for the following Package(s):
  APSP*7.0*1023
Distribution OK!

Want to Continue with Load? YES//
Loading Distribution...

Build APSP*7.0*1023 has an Environmental Check Routine
Want to RUN the Environment Check Routine? YES//
  APSP*7.0*1023
Will first run the Environment Check Routine, APSPEC23

                Hello, ADMIN USER EPCS

        Checking Environment for IHS PHARMACY MODIFICATIONS V 7.0, Patch 1023.

All requirements for installation have been met...

Use INSTALL NAME: APSP*7.0*1023 to install this Distribution.

1      Load a Distribution
2      Verify Checksums in Transport Global
3      Print Transport Global
4      Compare Transport Global to Current System
5      Backup a Transport Global

```



```
Oct 18, 2018@07:51:08
Build Distribution Date: Oct 11, 2018

Installing Routines:
    Oct 18, 2018@07:51:09

Running Pre-Install Routine: PRE^APSPEC23

Installing Data Dictionaries: .
    Oct 18, 2018@07:51:09

Installing Data:
    Oct 18, 2018@07:51:09

Installing PACKAGE COMPONENTS:

Installing PROTOCOL

Installing REMOTE PROCEDURE

Installing OPTION

Installing PARAMETER DEFINITION
    Oct 18, 2018@07:51:09

Running Post-Install Routine: POST^APSPEC23

Updating Routine file...

The following Routines were created during this install:
PSOXZA
PSOXZA1
PSOXZA10
PSOXZA11
PSOXZA12
PSOXZA13
PSOXZA14
PSOXZA2
PSOXZA3
PSOXZA4
PSOXZA5
PSOXZA6
PSOXZA7
PSOXZA8
PSOXZA9

Updating KIDS files...

APSP*7.0*1023 Installed.
    Oct 18, 2018@07:51:09

Install Completed

KIDS Distribution saved on Jul 11, 2018@17:08:18
Comment: APSP v7 Patch 1023

OK to continue with Load? NO// y YES

Distribution OK!
```

```
Want to Continue with Load? YES//
Loading Distribution...

Build APSP*7.0*1023 has an Environmental Check Routine
Want to RUN the Environment Check Routine? YES//
  APSP*7.0*1023
Will first run the Environment Check Routine, APSPEC23

                Hello, DEMO USER

  Checking Environment for IHS PHARMACY MODIFICATIONS V 7.0, Patch1023.

All requirements for installation have been met...

Use INSTALL NAME: APSP*7.0*1023 to install this Distribution.

  1      Load a Distribution
  2      Verify Checksums in Transport Global
  3      Print Transport Global
  4      Compare Transport Global to Current System
  5      Backup a Transport Global
  6      Install Package(s)
          Restart Install of Package(s)
          Unload a Distribution

Select Installation <TEST ACCOUNT> Option: 6  Install Package(s)
Select INSTALL NAME: APSP*7.0*1023          Loaded from Distribution
7/20/18@12:17:49
  => APSP v7 Patch 1023  ;Created on Jul 11, 2018@17:08:18

This Distribution was loaded on Jul 20, 2018@12:17:49 with header of
  APSP v7 Patch 1023  ;Created on Jul 11, 2018@17:08:18
  It consisted of the following Install(s):
  APSP*7.0*1023
Checking Install for Package APSP*7.0*1023
Will first run the Environment Check Routine, APSPEC23

                Hello, DEMO USER

  Checking Environment for IHS PHARMACY MODIFICATIONS V 7.0, Patch 1023.

All requirements for installation have been met...

Install Questions for APSP*7.0*1023

Incoming Files:

  50.7      PHARMACY ORDERABLE ITEM  (Partial Definition)
Note:  You already have the 'PHARMACY ORDERABLE ITEM' File.

  52        PRESCRIPTION  (Partial Definition)
Note:  You already have the 'PRESCRIPTION' File.

  52.41     PENDING OUTPATIENT ORDERS  (Partial Definition)
Note:  You already have the 'PENDING OUTPATIENT ORDERS' File.

  9009033.91APSP REFILL REQUESTS  (Partial Definition)
Note:  You already have the 'APSP REFILL REQUESTS' File.
```

```
9009036  APSP CS AUDIT LOG
Note:  You already have the 'APSP CS AUDIT LOG' File.

9009036.1 APSP DEA ARCHIVE INFO
Note:  You already have the 'APSP DEA ARCHIVE INFO' File.

9009036.2 APSP CS AUDIT LOG CODES (including data)
Note:  You already have the 'APSP CS AUDIT LOG CODES' File.
I will OVERWRITE your data with mine.

Want KIDS to Rebuild Menu Trees Upon Completion of Install? NO// NO

Want KIDS to INHIBIT LOGONS during the install? NO//

Enter the Device you want to print the Install messages.
You can queue the install by enter a 'Q' at the device prompt.
Enter a '^' to abort the install.

DEVICE: HOME//  CONSOLE
                APSP*7.0*1023

Install Started for APSP*7.0*1023 :
                Jul 20, 2018@12:18:06

Build Distribution Date: Jul 11, 2018

Installing Routines
                Jul 20, 2018@12:18:06

Running Pre-Install Routine: PRE^APSPEC23
Installing Data Dictionaries:
                Jul 20, 2018@12:18:06

Installing Data:
                Jul 20, 2018@12:18:06

Installing PACKAGE COMPONENTS:

Installing PROTOCOL

Installing REMOTE PROCEDURE

Installing OPTION

Installing PARAMETER DEFINITION
                Jul 20, 2018@12:18:06

Running Post-Install Routine: POST^APSPEC23 (JUL 21, 2018@02:00)

Updating Routine file

The following Routines were created during this install:
PSOXZA
PSOXZA1
PSOXZA10
PSOXZA11
PSOXZA12
PSOXZA13
PSOXZA14
PSOXZA2
```

```

PSOXZA3
PSOXZA4
PSOXZA5
PSOXZA6
PSOXZA7
PSOXZA8
PSOXZA9

Updating KIDS files
APSP*7.0*1023 Installed.
                Jul 20, 2018@12:18:06
NO Install Message sent
Install Completed

```

Figure 3-6: Sample IHS Pharmacy Modifications (APSP) installation

3.3.7 EHR v1.1 Patch 25 (Repository Updater)

3.3.7.1 Contents of Distribution

Table 3-7: EHR Patch 25 GUI file list

File	Description
ehr_0110.25.exe	GUI components for the EHR
ehr_0110.25o_EPCS_Supplemental_User_Guide.pdf	EHR Supplemental User Guide
ehr_0110.25t1.pdf	EHR Technical Manual – Volume 1
ehr_0110.25t2.pdf	EHR Technical Manual – Volume 2
ehr_0110.25t3.pdf	EHR Technical Manual – Volume 3
ehr_0110.25t4.pdf	EHR Technical Manual – Volume 4

3.3.7.2 Pre-Installation Instruction

Use vcManager to disable logins and shutdown active RPMS EHR users.

3.3.7.3 Client Installation

1. Execute the self-extracting archive (**ehr_0110.25.exe**) on the server where the **RPMS-EHR** shared folder resides.
2. If the security warning window displays, click **Run**.
3. The **RPMS-EHR Version 1.1 Patch 25** dialog will display. Click **OK** to continue.

- When prompted for the installation folder, either enter the full path to the shared folder where the bin and lib folders reside or click the **Browse** button to navigate to the shared folder location (Figure 3-7 and Figure 3-8). The figure below may not match the setup at your site and should *not* be copied. Be sure to install at the top level. Do *not* install into the lib or bin folders

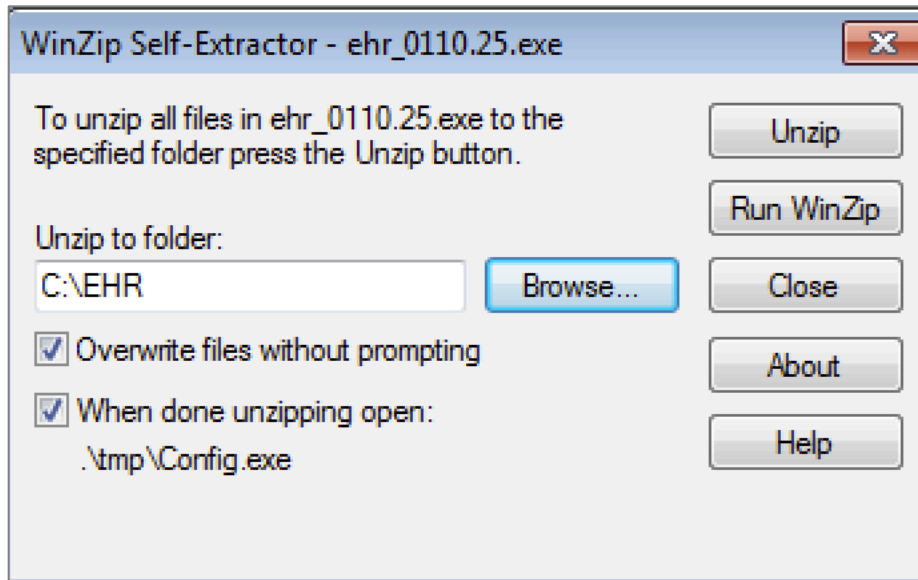


Figure 3-7: WinZip Self-Extractor window – Browse button

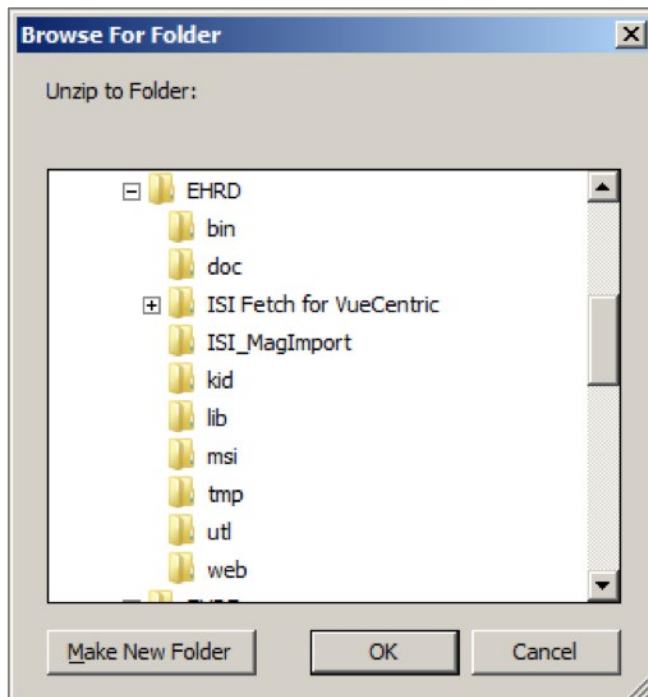


Figure 3-8: Browse Folder window – folder structure

5. Click the **Unzip** button to proceed with the extraction of compressed files.
6. When prompted, update any .ini file settings if necessary and click **OK**. The **VueCentric.ini** file will be updated with the new settings.
7. A confirmation message will display that the files were unzipped.

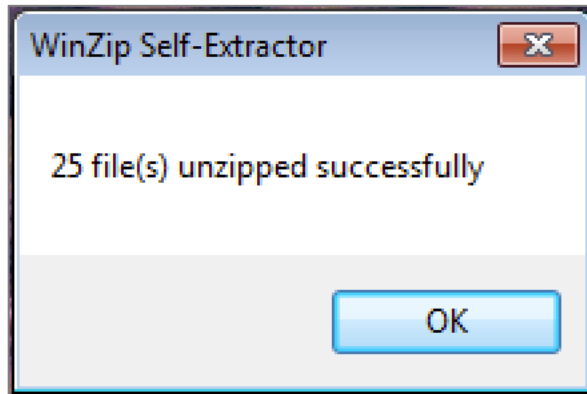


Figure 3-9: WinZip Self-Extractor – files successfully unzipped

6. The **Updater** tab on the **EHR Configuration** dialog displays automatically. Depending on your security settings, you may be asked if you wish to make changes to your system. Confirm **Yes**. Review the settings in the config file to verify accuracy. See Figure 3-10.

Note: This sample install is to a local system and should *not* be copied.

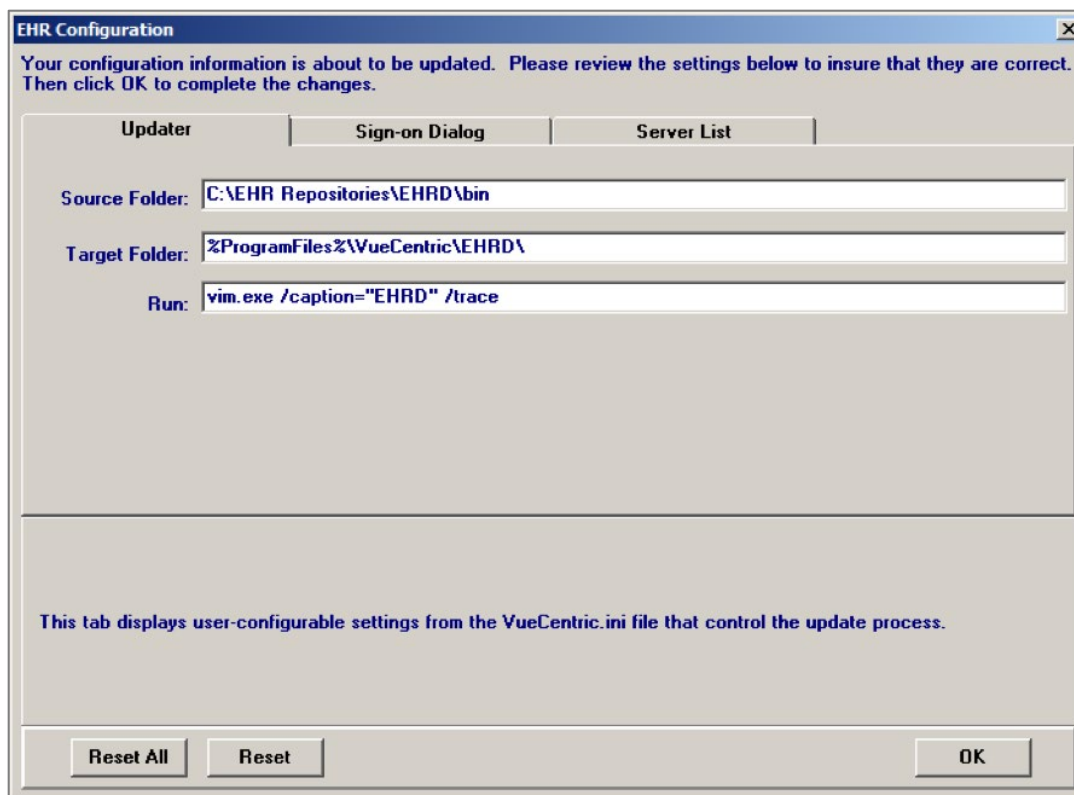


Figure 3-10: EHR Configuration dialog

3.3.7.4 Post-Installation Instructions

See the post-installation instructions under the EHR v1.1 Patch 25 (KIDS) installation in Section 8.

3.3.8 EHR v1.1 Patch 25 (KIDS)

3.3.8.1 Contents of Distribution

Table 3-8: EHR Patch 25 KIDS file list

File	Description
ehr_0110.25k	Patch 25 kids file
ehr_0110.25n	Patch 25 notes file

3.3.8.2 Required Patches

- XU*8.0*1019 or later
- DI*22.0*1018 or later

- APSP*7.0*1023
- AVA*93.2*24
- EHR*1.1*24

3.3.8.3 Pre-Installation Instruction

Use vcManager to disable logins and shut down active RPMS-EHR users.

3.3.8.4 Sample Installation

Perform the following steps for the **ehr_0110.25k** build files.

1. Load and install the distribution into KIDS using option **1** on the **KIDS Installation** menu.
2. Verify the load using option **2** on the **KIDS Installation** menu.
3. Consider using the options **3** and **4** on the **KIDS Installation** menu to print and compare the transport.
4. Install the distribution using option **6** on the **KIDS Installation** menu.

You will be asked for the mail group coordinators multiple times during the installation.

```

Edits and Distribution ...
Utilities ...
Installation ...
Patch Monitor Main Menu ...

Select Kernel Installation & Distribution System <TEST ACCOUNT> Option:

Do you really want to halt? YES// n

Select Kernel Installation & Distribution System <TEST ACCOUNT> Option: installa
tion

  1      Load a Distribution
  2      Verify Checksums in Transport Global
  3      Print Transport Global
  4      Compare Transport Global to Current System
  5      Backup a Transport Global
  6      Install Package(s)
         Restart Install of Package(s)
         Unload a Distribution

Select Installation <TEST ACCOUNT> Option: 1  Load a Distribution
Enter a Host File: d:\RPMS\ehr_0110.25k

KIDS Distribution saved on Oct 11, 2018@15:25:04
Comment: RPMS EHR v1.1 Patch 25

This Distribution contains Transport Globals for the following Package(s):

```



```

EHR*1.1*25
BEHO*1.1*070001
OR*3.0*1017
BEHO*1.1*009014
BEHO*1.1*071001
Distribution OK!

Want to Continue with Load? YES//
Loading Distribution...

Build EHR*1.1*25 has an Environmental Check Routine
Want to RUN the Environment Check Routine? YES//
  EHR*1.1*25
Will first run the Environment Check Routine, CIAVIP25

  BEHO*1.1*070001
Will first run the Environment Check Routine, CIAOINIT

  OR*3.0*1017
  BEHO*1.1*009014
Will first run the Environment Check Routine, CIAOINIT

  BEHO*1.1*071001
Will first run the Environment Check Routine, CIAOINIT

Use INSTALL NAME: EHR*1.1*25 to install this Distribution.

  1      Load a Distribution
  2      Verify Checksums in Transport Global
  3      Print Transport Global
  4      Compare Transport Global to Current System
  5      Backup a Transport Global
  6      Install Package(s)
          Restart Install of Package(s)
          Unload a Distribution

Select Installation <TEST ACCOUNT> Option: 2 Verify Checksums in Transport Global
Select INSTALL NAME: EHR*1.1*25      Loaded from Distribution    10/18/18@07:51:32
=> RPMS EHR v1.1 Patch 25 ;Created on Oct 11, 2018@15:25:04

This Distribution was loaded on Oct 18, 2018@07:51:32 with header of
RPMS EHR v1.1 Patch 25 ;Created on Oct 11, 2018@15:25:04
It consisted of the following Install(s):
  EHR*1.1*25BEHO*1.1*070001      OR*3.0*1017BEHO*1.1*009014BEHO*1.1*071001

Want each Routine Listed with Checksums: Yes//      YES
DEVICE: HOME//      VIRTUAL

PACKAGE: EHR*1.1*25      Oct 18, 2018 7:51 am      PAGE 1
-----
CIAVIP25 Calculated      15228151

  1 Routine checked, 0 failed.

PACKAGE: BEHO*1.1*070001      Oct 18, 2018 7:51 am      PAGE 1
-----
BEHOEP1 Calculated      42055412
BEHOEP2 Calculated      102297340

```

```
BEHOEP3   Calculated   53462597
BEHOEP4   Calculated   96424576
BEHOEP5   Calculated   5555502
BEHOEP6   Calculated   31438513
BEHOEPAD  Calculated   66938257
BEHOEPIC  Calculated  212081370
BEHOEPOX  Calculated   38756880
BEHOEPR1  Calculated  149433661
BEHOEPR2  Calculated  137595615
BEHOEPR3  Calculated   26020913
BEHOEPR4  Calculated  108321586
BEHOEPUT  Calculated   4948726
CIAOINIT  Calculated   6496050
```

15 Routines checked, 0 failed.

PACKAGE: OR*3.0*1017 Oct 18, 2018 7:51 am PAGE 1

```
ORCACT0   Calculated   87902833
ORCACT01  Calculated  100530244
ORCSAVE   Calculated   91485163
ORCSAVE2  Calculated   77628261
ORDEA     Calculated   90201164
ORDEA01   Calculated   60997871
ORDEA01A  Calculated  185498171
ORDEA01B  Calculated   16345523
ORDEA02   Calculated   14809491
ORDEAAUD  Calculated    172418
OREVNTX1  Calculated   76272326
ORMPS     Calculated   81039110
ORMTIM02  Calculated   19793411
ORQ21     Calculated   67670559
ORUTL     Calculated   54338532
ORWDPS1   Calculated   49153575
```

PACKAGE: OR*3.0*1017 Oct 18, 2018 7:51 am PAGE 2

```
ORWDPS3   Calculated   21097453
ORWDX     Calculated   81071597
ORWDXA    Calculated  111782238
ORWOR     Calculated   53762715
ORWOR1    Calculated   36456890
ORWORR    Calculated   79698242
ORY218    Calculated   10698140
ORY306    Calculated  152467674
ORY3060   Calculated   15740542
ORY30601  Calculated   72412814
ORY30602  Calculated   78548142
ORY30603  Calculated   85329704
ORY30604  Calculated   59464881
ORY30605  Calculated   68206680
ORY30606  Calculated   65736153
ORY30607  Calculated  11096349
ORY3061   Calculated   40890313
```

PACKAGE: OR*3.0*1017 Oct 18, 2018 7:51 am PAGE 3

```

ORY3062   Calculated   27022422
ORY3063   Calculated   13150746
ORY3064   Calculated   13691643
ORY306ES  Calculated   12813426
ORY306PR  Calculated   2695096
ORY371    Calculated   3867023
ORYCHKE   Calculated   2520138

```

40 Routines checked, 0 failed.

PACKAGE: BEHO*1.1*009014 Oct 18, 2018 7:51 am PAGE 1

```

-----
BEHORXF1  Calculated   169434053
BEHORXF2  Calculated   56671035
BEHORXF4  Calculated   3115421
BEHORXFN  Calculated   162654331
BEHORXIN  Calculated   9028818
BEHORXSP  Calculated   22341616
CIAOINIT  Calculated   6496050

```

7 Routines checked, 0 failed.

PACKAGE: BEHO*1.1*071001 Oct 18, 2018 7:51 am PAGE 1

```

-----
BEHOEP7   Calculated   169481063
BEHOEPS   Calculated   110037589
CIAOINIT  Calculated   6496050

```

3 Routines checked, 0 failed.

- 1 Load a Distribution
- 2 Verify Checksums in Transport Global
- 3 Print Transport Global
- 4 Compare Transport Global to Current System
- 5 Backup a Transport Global
- 6 Install Package(s)
- Restart Install of Package(s)
- Unload a Distribution

Select Installation <TEST ACCOUNT> Option: 2 Verify Checksums in Transport Global
 Select INSTALL NAME: OR*3.0*1017 Loaded from Distribution 10/18/18@07:51:32
 => RPMS EHR v1.1 Patch 25 ;Created on Oct 11, 2018@15:25:04

This Distribution was loaded on Oct 18, 2018@07:51:32 with header of
 RPMS EHR v1.1 Patch 25 ;Created on Oct 11, 2018@15:25:04
 It consisted of the following Install(s):
 OR*3.0*1017

Want each Routine Listed with Checksums: Yes// YES
 DEVICE: HOME// VIRTUAL

PACKAGE: OR*3.0*1017 Oct 18, 2018 7:51 am PAGE 1

```

-----
ORCACT0   Calculated   87902833
ORCACT01  Calculated   100530244
ORCSAVE   Calculated   91485163
ORCSAVE2  Calculated   77628261

```

```

ORDEA      Calculated      90201164
ORDEA01    Calculated      60997871
ORDEA01A   Calculated      185498171
ORDEA01B   Calculated      16345523
ORDEA02    Calculated      14809491
ORDEAAUD   Calculated        172418
OREVNTX1   Calculated      76272326
ORMPS      Calculated      81039110
ORMTIM02   Calculated      19793411
ORQ21      Calculated      67670559
ORUTL      Calculated      54338532
ORWDPS1    Calculated      49153575

```

PACKAGE: OR*3.0*1017 Oct 18, 2018 7:51 am

PAGE 2

```

ORWDPS3    Calculated      21097453
ORWDX      Calculated      81071597
ORWDXA     Calculated      111782238
ORWOR      Calculated      53762715
ORWOR1     Calculated      36456890
ORWORR     Calculated      79698242
ORY218     Calculated      10698140
ORY306     Calculated      152467674
ORY3060    Calculated      15740542
ORY30601   Calculated      72412814
ORY30602   Calculated      78548142
ORY30603   Calculated      85329704
ORY30604   Calculated      59464881
ORY30605   Calculated      68206680
ORY30606   Calculated      65736153
ORY30607   Calculated      11096349
ORY3061    Calculated      40890313

```

PACKAGE: OR*3.0*1017 Oct 18, 2018 7:51 am

PAGE 3

```

ORY3062    Calculated      27022422
ORY3063    Calculated      13150746
ORY3064    Calculated      13691643
ORY306ES   Calculated      12813426
ORY306PR   Calculated      2695096
ORY371     Calculated      3867023
ORYCHKE    Calculated      2520138

```

40 Routines checked, 0 failed.

- 1 Load a Distribution
- 2 Verify Checksums in Transport Global
- 3 Print Transport Global
- 4 Compare Transport Global to Current System
- 5 Backup a Transport Global
- 6 Install Package(s)
- Restart Install of Package(s)
- Unload a Distribution

Select Installation <TEST ACCOUNT> Option: 2 Verify Checksums in Transport Global

Select INSTALL NAME: BEHO*1.1*009014 Loaded from Distribution

10/18/18@07:51:32

=> RPMS EHR v1.1 Patch 25 ;Created on Oct 11, 2018@15:25:04

```
This Distribution was loaded on Oct 18, 2018@07:51:32 with header of
  RPMS EHR v1.1 Patch 25 ;Created on Oct 11, 2018@15:25:04
  It consisted of the following Install(s):
BEHO*1.1*009014
```

```
Want each Routine Listed with Checksums: Yes//   YES
DEVICE: HOME//   VIRTUAL
```

```
PACKAGE: BEHO*1.1*009014      Oct 18, 2018 7:52 am                PAGE 1
-----
```

```
BEHORXF1  Calculated  169434053
BEHORXF2  Calculated  56671035
BEHORXF4  Calculated  3115421
BEHORXFN  Calculated  162654331
BEHORXIN  Calculated  9028818
BEHORXSP  Calculated  22341616
CIAOINIT  Calculated  6496050
```

7 Routines checked, 0 failed.

- 1 Load a Distribution
- 2 Verify Checksums in Transport Global
- 3 Print Transport Global
- 4 Compare Transport Global to Current System
- 5 Backup a Transport Global
- 6 Install Package(s)
Restart Install of Package(s)
Unload a Distribution

```
Select Installation <TEST ACCOUNT> Option: 2 Verify Checksums in Transport Global
Select INSTALL NAME: BEHO*1.1*071001      Loaded from Distribution  10/18/18@
07:51:32
```

```
=> RPMS EHR v1.1 Patch 25 ;Created on Oct 11, 2018@15:25:04
```

```
This Distribution was loaded on Oct 18, 2018@07:51:32 with header of
  RPMS EHR v1.1 Patch 25 ;Created on Oct 11, 2018@15:25:04
  It consisted of the following Install(s):
BEHO*1.1*071001
```

```
Want each Routine Listed with Checksums: Yes//   YES
DEVICE: HOME//   VIRTUAL
```

```
PACKAGE: BEHO*1.1*071001      Oct 18, 2018 7:52 am                PAGE 1
-----
```

```
BEHOEP7   Calculated  169481063
BEHOEPS   Calculated  110037589
CIAOINIT  Calculated  6496050
```

3 Routines checked, 0 failed.

- 1 Load a Distribution
- 2 Verify Checksums in Transport Global
- 3 Print Transport Global
- 4 Compare Transport Global to Current System
- 5 Backup a Transport Global
- 6 Install Package(s)
Restart Install of Package(s)

```

Unload a Distribution

Select Installation <TEST ACCOUNT> Option: 2  Verify Checksums in Transport Global
Select INSTALL NAME: BEHO*1.1*070001          Loaded from Distribution    10/18/18@
07:51:32
=> RPMS EHR v1.1 Patch 25 ;Created on Oct 11, 2018@15:25:04

This Distribution was loaded on Oct 18, 2018@07:51:32 with header of
  RPMS EHR v1.1 Patch 25 ;Created on Oct 11, 2018@15:25:04
  It consisted of the following Install(s):
BEHO*1.1*070001

Want each Routine Listed with Checksums: Yes//   YES
DEVICE: HOME//   VIRTUAL

PACKAGE: BEHO*1.1*070001      Oct 18, 2018 7:52 am                PAGE 1
-----
BEHOEP1   Calculated   42055412
BEHOEP2   Calculated  102297340
BEHOEP3   Calculated   53462597
BEHOEP4   Calculated   96424576
BEHOEP5   Calculated   5555502
BEHOEP6   Calculated   31438513
BEHOEPAD  Calculated   66938257
BEHOEPIC  Calculated  212081370
BEHOEPOX  Calculated   38756880
BEHOEPR1  Calculated  149433661
BEHOEPR2  Calculated  137595615
BEHOEPR3  Calculated   26020913
BEHOEPR4  Calculated  108321586
BEHOEPUT  Calculated   4948726
CIAOINIT  Calculated   6496050

  15 Routines checked, 0 failed.

  1   Load a Distribution
  2   Verify Checksums in Transport Global
  3   Print Transport Global
  4   Compare Transport Global to Current System
  5   Backup a Transport Global
  6   Install Package(s)
      Restart Install of Package(s)
      Unload a Distribution

Select Installation <TEST ACCOUNT> Option: 6  Install Package(s)
Select INSTALL NAME: EHR*1.1*25          Loaded from Distribution    10/18/18@07:51
:32
=> RPMS EHR v1.1 Patch 25 ;Created on Oct 11, 2018@15:25:04

This Distribution was loaded on Oct 18, 2018@07:51:32 with header of
  RPMS EHR v1.1 Patch 25 ;Created on Oct 11, 2018@15:25:04
  It consisted of the following Install(s):
  EHR*1.1*25BEHO*1.1*070001   OR*3.0*1017BEHO*1.1*009014BEHO*1.1*071001
Checking Install for Package EHR*1.1*25
Will first run the Environment Check Routine, CIAVIP25

Install Questions for EHR*1.1*25

Checking Install for Package BEHO*1.1*070001

```

```
Will first run the Environment Check Routine, CIAOINIT

Install Questions for BEHO*1.1*070001

Incoming Files:

    8989.51  PARAMETER DEFINITION (including data)
Note: You already have the 'PARAMETER DEFINITION' File.
I will REPLACE your data with mine.

    8989.52  PARAMETER TEMPLATE (including data)
Note: You already have the 'PARAMETER TEMPLATE' File.
I will REPLACE your data with mine.

    19930.2  VUECENTRIC OBJECT REGISTRY (including data)
Note: You already have the 'VUECENTRIC OBJECT REGISTRY' File.
I will OVERWRITE your data with mine.

    19930.21 VUECENTRIC OBJECT CATEGORY (including data)
Note: You already have the 'VUECENTRIC OBJECT CATEGORY' File.
I will OVERWRITE your data with mine.

    19930.3  VUECENTRIC TEMPLATE REGISTRY (including data)
Note: You already have the 'VUECENTRIC TEMPLATE REGISTRY' File.
I will OVERWRITE your data with mine.

    19941.21 CIA EVENT TYPE (including data)
Note: You already have the 'CIA EVENT TYPE' File.
I will OVERWRITE your data with mine.

    90460.09 BEH EPCS OE/RR PARAMETERS DATA
Note: You already have the 'BEH EPCS OE/RR PARAMETERS DATA' File.

    90460.13 BEHO EPCS INCIDENT REPORT VARIABLES (including data)
Note: You already have the 'BEHO EPCS INCIDENT REPORT VARIABLES' File.
I will OVERWRITE your data with mine.

    90460.14 BEH EPCS AUDIT LOG MESSAGES (including data)
Note: You already have the 'BEH EPCS AUDIT LOG MESSAGES' File.
I will REPLACE your data with mine.

Incoming Mail Groups:

Enter the Coordinator for Mail Group 'BEHO EPCS INCIDENT RESPONSE': EPCS,ADMIN U
SER//          AUE

Checking Install for Package OR*3.0*1017

Install Questions for OR*3.0*1017

Incoming Files:

    100.7    OE/RR EPCS PARAMETERS
Note: You already have the 'OE/RR EPCS PARAMETERS' File.

    100.9    OE/RR NOTIFICATIONS (including data)
Note: You already have the 'OE/RR NOTIFICATIONS' File.
I will OVERWRITE your data with mine.

    101.41   ORDER DIALOG (including data)
```

Note: You already have the 'ORDER DIALOG' File.
I will OVERWRITE your data with mine.

101.52 ORDER DEA ARCHIVE INFO

Note: You already have the 'ORDER DEA ARCHIVE INFO' File.

Incoming Mail Groups:

Enter the Coordinator for Mail Group 'OR CACS': EPCS,ADMIN USER// AUE

Checking Install for Package BEHO*1.1*009014
Will first run the Environment Check Routine, CIAOINIT

Install Questions for BEHO*1.1*009014

Incoming Files:

8989.51 PARAMETER DEFINITION (including data)

Note: You already have the 'PARAMETER DEFINITION' File.
I will REPLACE your data with mine.

8989.52 PARAMETER TEMPLATE (including data)

Note: You already have the 'PARAMETER TEMPLATE' File.
I will REPLACE your data with mine.

19930.2 VUECENTRIC OBJECT REGISTRY (including data)

Note: You already have the 'VUECENTRIC OBJECT REGISTRY' File.
I will OVERWRITE your data with mine.

19930.3 VUECENTRIC TEMPLATE REGISTRY (including data)

Note: You already have the 'VUECENTRIC TEMPLATE REGISTRY' File.
I will OVERWRITE your data with mine.

19941.21 CIA EVENT TYPE (including data)

Note: You already have the 'CIA EVENT TYPE' File.
I will OVERWRITE your data with mine.

90460.07 BEH PHARMACY PRINT FORMATS (including data)

Note: You already have the 'BEH PHARMACY PRINT FORMATS' File.
I will MERGE your data with mine.

Checking Install for Package BEHO*1.1*071001
Will first run the Environment Check Routine, CIAOINIT

Install Questions for BEHO*1.1*071001

Incoming Files:

8989.51 PARAMETER DEFINITION (including data)

Note: You already have the 'PARAMETER DEFINITION' File.
I will REPLACE your data with mine.

8989.52 PARAMETER TEMPLATE (including data)

Note: You already have the 'PARAMETER TEMPLATE' File.
I will REPLACE your data with mine.

19930.2 VUECENTRIC OBJECT REGISTRY (including data)

Note: You already have the 'VUECENTRIC OBJECT REGISTRY' File.
I will OVERWRITE your data with mine.

19930.21 VUECENTRIC OBJECT CATEGORY (including data)


```
Note: You already have the 'VUECENTRIC OBJECT CATEGORY' File.
I will OVERWRITE your data with mine.
```

```
19930.3 VUECENTRIC TEMPLATE REGISTRY (including data)
Note: You already have the 'VUECENTRIC TEMPLATE REGISTRY' File.
I will OVERWRITE your data with mine.
```

```
19941.21 CIA EVENT TYPE (including data)
Note: You already have the 'CIA EVENT TYPE' File.
I will OVERWRITE your data with mine.
```

```
90460.12 BEH EPCS CERTIFICATE STATUS
Note: You already have the 'BEH EPCS CERTIFICATE STATUS' File.
```

```
90460.15 BEH EPCS CRL DISTRIBUTION POINTS
Note: You already have the 'BEH EPCS CRL DISTRIBUTION POINTS' File.
```

```
Enter the Device you want to print the Install messages.
Enter a '^' to abort the install.
```

```
DEVICE: HOME// VIRTUAL
```

```
Install Started for EHR*1.1*25 :
Oct 18, 2018@07:52:37
```

```
Build Distribution Date: Oct 11, 2018
```

```
Installing Routines:
Oct 18, 2018@07:52:37
```

```
Running Pre-Install Routine: PRE^CIAVIP25
```

```
Install Started for BEHO*1.1*070001 :
Oct 18, 2018@07:52:37
```

```
Build Distribution Date: Oct 11, 2018
```

```
Installing Routines:
Oct 18, 2018@07:52:37
```

```
Running Pre-Install Routine: PRE^CIAOINIT
```

```
Saving local object registry settings...
```

```
Creating new object categories...
```

```
Installing Data Dictionaries:
Oct 18, 2018@07:52:37
```

```
Installing Data:
Oct 18, 2018@07:52:37
```

```
Installing PACKAGE COMPONENTS:
```

```
Installing SECURITY KEY
```

```
Installing MAIL GROUP
```

```
Installing REMOTE PROCEDURE
```

```
Installing OPTION
      Oct 18, 2018@07:52:37

Running Post-Install Routine: POST^CIAOINIT

  Restoring local object registry settings...

  Setting up default site parameters...

Updating Routine file...

Updating KIDS files...

BEHO*1.1*070001 Installed.
      Oct 18, 2018@07:52:37

                                BEHO*1.1*070001
NO Install Message sent

Install Started for OR*3.0*1017 :
      Oct 18, 2018@07:52:37

Build Distribution Date: Oct 10, 2018

Installing Routines:
      Oct 18, 2018@07:52:38

Running Pre-Install Routine: PRE^ORY218

Deleting existing OE/RR EPCS PARAMETERS data dictionary while preserving data...
DONE

Installing Data Dictionaries:
      Oct 18, 2018@07:52:38

Installing Data:
      Oct 18, 2018@07:52:38

Installing PACKAGE COMPONENTS:

Installing SECURITY KEY

Installing MAIL GROUP

Installing REMOTE PROCEDURE

Installing OPTION

Installing PARAMETER DEFINITION
      Oct 18, 2018@07:52:38

Running Post-Install Routine: POST^ORY306

Cleaning up menus...
  Adding OR EPCS MENU to ORW PARAM GUI

Configuring site FT YATES HOSPITAL for ePCS...
DONE - SITE ALREADY CONFIGURED

      Queue Monthly CS Report by Provider...
```

```

      'OR EPCS CS RX BY PROVIDER' scheduled for NOV 01, 2018@21:00
      Continuing...

.

Order Check Expert System Rule Transporter
  Created: MAR 13,2012 at 13:09  at  CPRS29.FO-SLC.DOMAIN.EXT
  Current Date: OCT 18,2018 at 07:52  at  2011-DEMO-HQ.ABQ.IHS.GOV

Loading Data . . . . .

  Installing '863.8  OCX MDD PARAMETER' records... . . . . .
  . . . . .
  Installing '864.1  OCX MDD DATATYPE' records... . .

-----Extra Data Value in 2011-DEMO-HQ.ABQ.IHS.GOV-----
      OCX MDD DATATYPE: GENERIC [12]
      PARAMETER: HELP MESSAGE [9]
      VALUE field [1]
          (R) CPRS29.FO-SLC.DOMAIN.EXT:
          (L) 2011-DEMO-HQ.ABQ.IHS.GOV:
      ...Correct data Filed .
  Installing '863.7  OCX MDD PUBLIC FUNCTION' records... . . .
  Installing '863.9  OCX MDD CONDITION/FUNCTION' records... . . .
  Installing '863.4  OCX MDD ATTRIBUTE' records... . . . . .
  Installing '863.2  OCX MDD SUBJECT' records... .
  Installing '863.3  OCX MDD LINK' records... . . . . .
  Installing '860.9  ORDER CHECK NATIONAL TERM' records... . . . . .
  . . . . .
  Installing '860.8  ORDER CHECK COMPILER FUNCTIONS' records... . . . .
  . . . . .
  Installing '860.6  ORDER CHECK DATA CONTEXT' records... . . . .
  Installing '860.5  ORDER CHECK DATA SOURCE' records... . . . .
  Installing '860.4  ORDER CHECK DATA FIELD' records... . . . .
  Installing '860.3  ORDER CHECK ELEMENT' records... . . .
  Installing '860.2  ORDER CHECK RULE' records... .

      No data filing errors.

Transport Finished...

---Creating Order Check Routines-----

Build list of Active Rules, Elements and Datafields...

      98 DATA FIELDS

      84 ELEMENTS

```

```
40 RULES

Compile DataField Navigation code...
    103 DataField Navigation Code Arrays

Compile Element Evaluation code...
    78 Event Evaluation Code Arrays

Compile Element MetaCode...
    84 Element Metacode Arrays

Get Compiler Function Code...
    53 Compiler Include Functions

Compile Rule Element Relation code...
    58 Rule Element Relation Code Arrays

Construct Decision Tree...
    731 Sub-Routines

Optimize Sub-Routines...
    296 Sub-Routines
    59.6% Optimization

Assemble Routines...
    42 OCXOZ* Routines

Updating Routine file...

Updating KIDS files...

OR*3.0*1017 Installed.
    Oct 18, 2018@07:52:39

Not a VA primary domain

                                BEHO*1.1*070001

NO Install Message sent

Install Started for BEHO*1.1*009014 :
    Oct 18, 2018@07:52:39

Build Distribution Date: Oct 02, 2018

Installing Routines:
    Oct 18, 2018@07:52:39

Running Pre-Install Routine: PRE^CIAOINIT

Saving local object registry settings...
```

```
Creating new object categories...
Installing Data Dictionaries:
    Oct 18, 2018@07:52:39
Installing Data:
    Oct 18, 2018@07:52:39
Installing PACKAGE COMPONENTS:
Installing REMOTE PROCEDURE
Installing OPTION
Installing PARAMETER DEFINITION
    Oct 18, 2018@07:52:39
Running Post-Install Routine: POST^CIAOINIT
Restoring local object registry settings...
Setting up default site parameters...
Updating Routine file...
Updating KIDS files...
BEHO*1.1*009014 Installed.
    Oct 18, 2018@07:52:39
                                BEHO*1.1*070001
NO Install Message sent
Install Started for BEHO*1.1*071001 :
    Oct 18, 2018@07:52:39
Build Distribution Date: Oct 11, 2018
Installing Routines:
    Oct 18, 2018@07:52:39
Running Pre-Install Routine: PRE^CIAOINIT
Saving local object registry settings...
Creating new object categories...
Installing Data Dictionaries:
    Oct 18, 2018@07:52:39
Installing Data:
    Oct 18, 2018@07:52:39
Installing PACKAGE COMPONENTS:
Installing INPUT TEMPLATE
Installing REMOTE PROCEDURE
    Oct 18, 2018@07:52:39
```

```
Running Post-Install Routine: POST^CIAOINIT
  Restoring local object registry settings...
  Setting up default site parameters...
Updating Routine file...
Updating KIDS files...
BEHO*1.1*071001 Installed.
      Oct 18, 2018@07:52:39
NO Install Message sent
Running Post-Install Routine: POST^CIAVIP25
Updating version numbers...
Updating Routine file...
Updating KIDS files...
EHR*1.1*25 Installed.
      Oct 18, 2018@07:52:39
No link to PACKAGE file
Install Completed
```

Figure 3-11: Sample EHR Patch 25 installation

3.3.8.5 Post-Installation Instructions

- Make sure that the KIDS build is successfully installed.
- Allow the users back onto the system.
- Log on to check if the components are updated.

3.3.9 EPCS Monitoring Service

The EPCS Monitoring Service is a Windows-based service that can connect to one or more RPMS databases to perform the following functions:

- Validating the system time for the RPMS database is within five minutes of the National Institute of Standards and Technology (NIST) time clock.
- Validating that the certificates used by the providers are valid to perform digital signing of controlled substance orders.

3.3.9.1 Contents of Distribution

Table 3-9: EPCS Monitoring Service file list

File	Description
ehr_0110.25_EPCSMon.Setup.msi	EPCS Monitoring Service installer
ehr_0110.25o_EPCS_Monitoring_Service_Technical_Guide.pdf	EPCS Monitoring Service — Technical Guide

3.3.9.2 Pre-Installation Instructions

The RPMS and EHR users can be allowed back on the system prior to the installation of the EPCS Monitoring Service.

3.3.9.3 Installation

This Windows-based service needs to be installed on a Windows server that can have outbound connections to the internet and that can connect to the RPMS database(s) that it is monitoring. Examples of servers that can be used for installation are the Windows server that hosts the RPMS database or a separate Windows application server that hosts the EHR Repository or the BPRM practice management Standalone Application Server, as long as that server can communicate with the RPMS database via BMXNet broker and can connect to the internet.

1. As a user with administrative rights, install the BEH EPCS Monitoring Service using the ehr_0110.25_EPCSMon.Setup.msi installer. Right-click on the installation file and select **Install**. The dialog shown in Figure 3-12 will display.

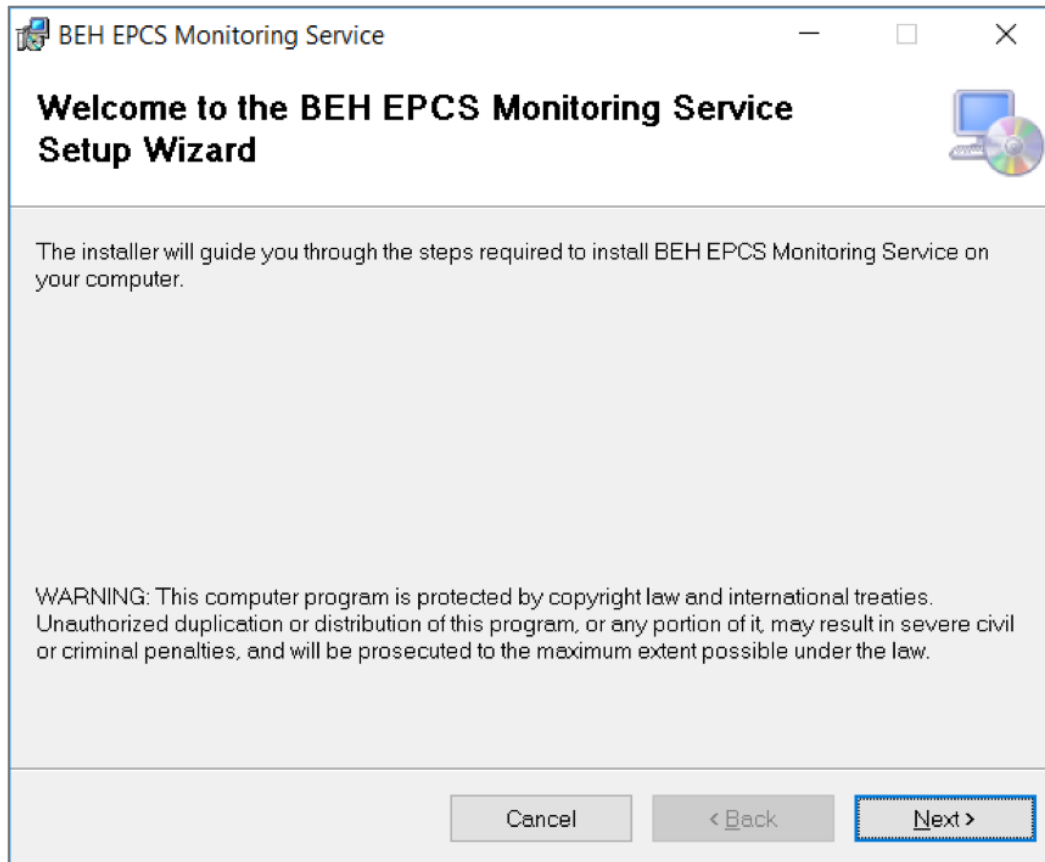


Figure 3-12: Monitoring service installer welcome screen

2. A dialog similar to Figure 3-13 will display. It is recommended that you keep the default selections and click **N**ext to continue with the installation. Note the installation path that is used for installation, as this will be needed later when configuring the EPCS Monitoring Service.

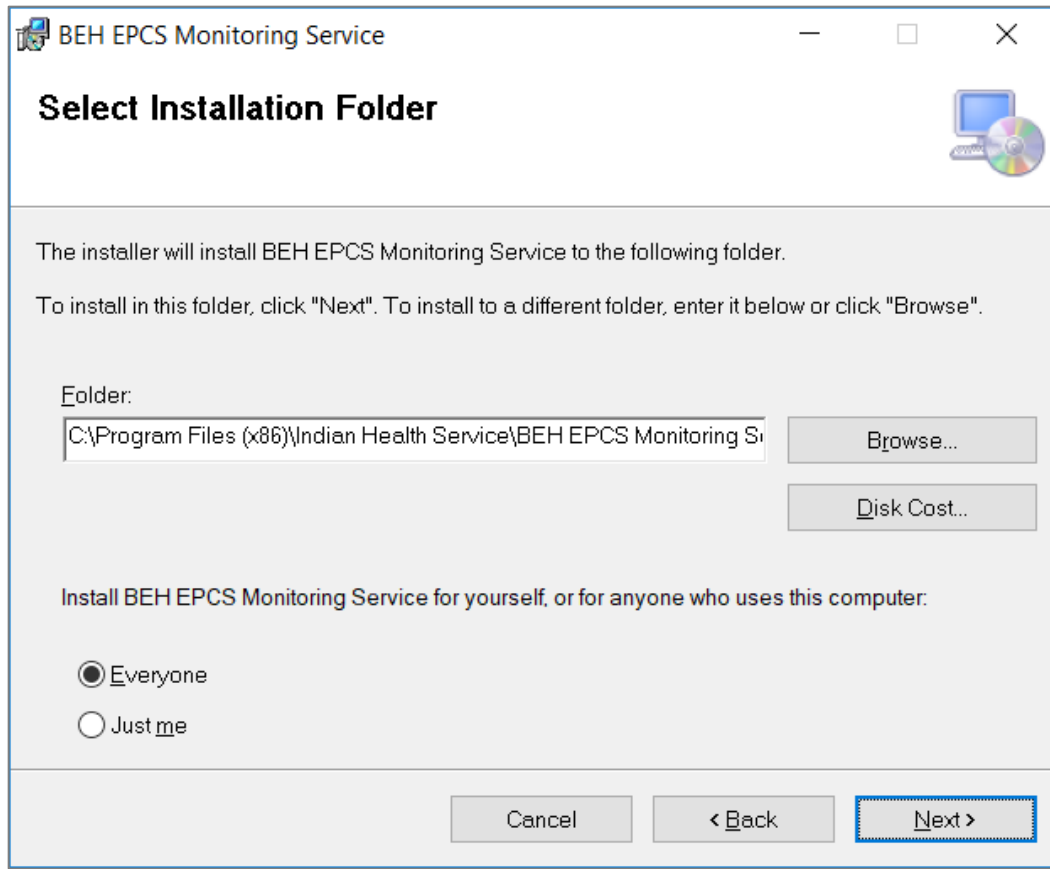


Figure 3-13: Install folder location

3. A dialog prompting you to confirm the installation will display as shown in Figure 3-14. Click **Next** to confirm the installation.

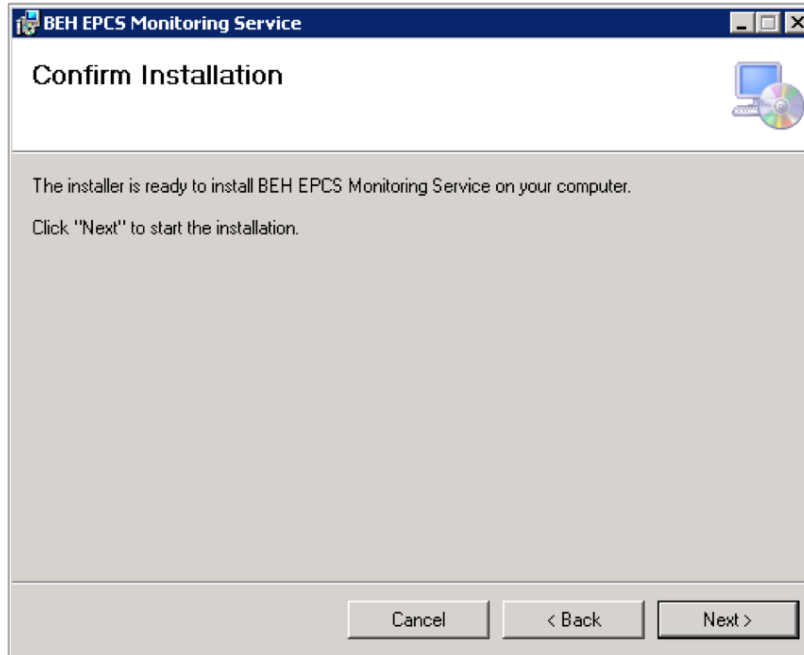


Figure 3-14: EPCS Monitoring Service — confirm installation

4. A dialog similar to Figure 3-15 will display, confirming that the service installed correctly. Click **Close** to complete the installation.

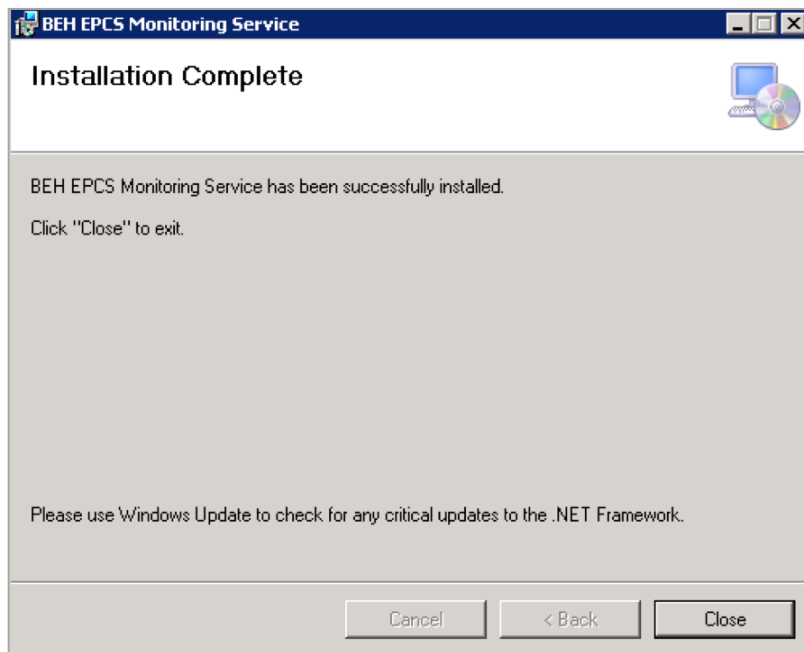


Figure 3-15: EPCS Monitoring Service — successful installation

3.3.9.4 Post-Installation Instructions

See the *EPCS Configuration Guide* for instructions on configuring the EPCS Monitoring Service.

3.4 Post-Installation Configuration

Installing the EPCS releases does not mean that EPCS is running. While the pharmacy changes will be effective immediately, there are other EPCS configuration steps that must be completed before the ordering functionality is active.

A full configuration guide has been written to provide assistance with the configuration of EPCS. This will be needed by Clinical Application Coordinators (CACs), pharmacists, providers, and credentialing officers. Please see the *EPCS Configuration Guide* for all the details needed to successfully configure the database to do EPCS.

The following are items that should be implemented immediately after installation so that pharmacy processing can continue as it did prior to installation.

- The PSDRPH key is required for controlled substance processing in the pharmacy application, otherwise prescriptions will go to NON-VERIFIED status. Immediately after installation, sites will need to assign the PSDRPH to the appropriate personnel. This key is discussed in more detail in Sections 3.2.6 and 6.1 of the *EPCS Configuration Guide*.
- The parameters below are defaulted to null (zero) and should be set appropriately based on site and state requirements. Parameters are explained in more detail in Section 7.0 of the *EPCS Configuration Guide*.
 - APSP CS II ORDER DATE MAX: This parameter holds the number of days after the issue date or the earliest fill date (if available) that a C-II order can continue to be processed. There is no default and the maximum value is 365 days. This parameter may be set at the division or system levels. If the pending order is older than this value the pharmacy is not able to process the order and it must be discontinued.
 - APSP CS II RX EXPIRE DAYS: This parameter holds the number of days before a C-II prescription will expire. There is no default value and the maximum value is 365 days. This parameter can be set at the division and system levels.

Glossary

Controlled Substance

Controlled substances are drugs that are regulated by state and federal laws that aim to control the danger of addiction, abuse, physical and mental harm, the trafficking by illegal means, and the dangers from actions of those who have used the substances. Such drugs may be declared illegal for sale or use, but may be dispensed under a physician's prescription.

EHR

The Electronic Health Record — generally the graphical user interface.

Surescripts

The company that IHS uses to electronically transmit prescriptions to for filling at an outside pharmacy

Token

Something that the user possesses and controls (typically a cryptographic module or password) that is used to authenticate the user's identity.

Two-Factor Authentication

An implementation of multi-factor authentication that uses only two factors.

Verify Code

A unique security code which serves as a second level of security access. Use of this code is site specific; sometimes used interchangeably with a password.

Acronym List

Acronym	Meaning
CAC	Clinical Application Coordinator
DEA	Drug Enforcement Administration
EHR	Electronic Health Record
EPCS	Electronic Prescribing of Controlled Substances
GUI	Graphical User Interface
HL7	Health Level Seven
IHS	Indian Health Service
KIDS	Kernel Installation and Distribution System
NDC	National Drug Code
NIST	National Institute of Standards and Technology
RPMS	Resource and Patient Management System
TCP	Transmission Control Protocol
VA	Department of Veterans Affairs

Contact Information

If you have any questions or comments regarding this distribution, please contact the IHS IT Service Desk.

Phone: (888) 830-7280 (toll free)

Web: <https://www.ihs.gov/itsupport/>

Email: itsupport@ihs.gov