



RESOURCE AND PATIENT MANAGEMENT SYSTEM

IHS VA Support Files: Station Number Update

(AVA)

Technical Addendum

Version 93.2 Patch 20
November 2010

Office of Information Technology (OIT)
Division of Information Resource Management
Albuquerque, New Mexico

Table of Contents

1.0	General Information	1
2.0	Installation Notes.....	2
2.1	Contents of Distribution	2
2.2	Required Resources.....	2
2.3	Before You Begin	2
3.0	Installation Instructions	3
3.1	Update the STATION NUMBER File	3
3.2	Update the INSTITUTION File.....	5
3.3	Install the Routines	5
3.4	Update the MEDICAL CENTER DIVISION File.....	6
4.0	Lab Instructions for Station Number Update	7
4.1	Stop the Lab Interface	7
4.2	Update the DI Interface Engine	7
4.3	Update the LAB INTERFACE 2 Entry in FILE 770	8
4.4	Update the UNIVERSAL INTERFACE Entry in FILE 62.48.....	9
4.5	Restart the Lab Interface	10
	Contact Information	11

1.0 General Information

These instructions are to be used to update a facilities station number replacing the non-standard station number with a new standard number provided by Indian Health Service Office of Information Technology (IHS-OIT) staff. You must have access and be familiar with programmer mode and Veterans Administration (VA) FileMan in order to understand what is being done in these instructions. All pertinent files such as the Institution, Medical Center Division, and Station Number files will be updated.

Start logging this session before conducting this update. This will ensure a printed audit trail if any problems should arise. Information is provided with “<” and ending with “>” and should not be used when typing in the instructions, but are for information only.

Make sure the laboratory supervisor (or someone who knows the Resource and Patient Management System [RPMS] Lab and the DI interface) is available before and after this change to make sure he/she shuts down the DI lab interface, and afterwards to make sure that everything comes up and is working correctly.

2.0 Installation Notes

Prefix:

Current Version:

2.1 Contents of Distribution

File	Description
StationNumberUpdate.May2010.doc	This document
bsdvar.rsa	Scheduling routine
vasite.rsa	VA station number utility routine

2.2 Required Resources

- Patient Information Management System (PIMS) v5.3 p1011

2.3 Before You Begin

- a. Check for commercial off-the-shelf (COTS) packages that might be affected (ask the vendor if the station number is being used in the software).
- b. Make sure that *all Lab orders* have been completed.
- c. Stop the Lab interface (see Section 4.1).

3.0 Installation Instructions

3.1 Update the STATION NUMBER File

The example below adds entry #2 to the STATION NUMBER file.

1. Use the FileMan INQUIRE TO FILE ENTRIES option to check the entries in the STATION NUMBER file, as in the following example. (Bold type indicates information typed by the user at FileMan prompts.)

```
Select OPTION: INQUIRE TO FILE ENTRIES

OUTPUT FROM WHAT FILE:  STATION NUMBER (TIME SENSITIVE)

Select STATION NUMBER (TIME SENSITIVE) REFERENCE NUMBER: 1
07-18-04      FT.DEFIANCE      3842
NUMBER: 1
EFFECTIVE DATE: JUL 18, 2004      REFERENCE NUMBER: 1
STATION NUMBER: 3842      MEDICAL CENTER DIVISION: FT.DEFIANCE
IS PRIMARY DIVISION: YES
```

Figure 3-1: Check entries in STATION NUMBERS file using INQUIRE TO FILE ENTRIES option

2. Use the FileMan ENTER OR EDIT FILE ENTRIES option to update the STATION NUMBER file with the new station number. Sample entries for the following prompts are shown in bold in Figure 3-2.
 - a. At the “STATION NUMBER (TIME SENSITIVE) REFERENCE NUMBER” prompt, type the reference number for the new station number entry.
 - b. At the “STATION NUMBER (TIME SENSITIVE) EFFECTIVE DATE” prompt, type **T** (today), or type a different effective date.
 - c. At the “STATION NUMBER (TIME SENSITIVE) MEDICAL CENTER DIVISION” prompt, type the facility name.
 - d. At the “STATION NUMBER (TIME SENSITIVE) STATION NUMBER” prompt, type the new station number.
 - e. At the “EFFECTIVE DATE” prompt, type **T** (today), or type a different effective date.
 - f. At the “MEDICAL CENTER DIVISION” prompt, type the facility name.
 - g. At the “STATION NUMBER” prompt, type the new station number.
 - h. At the “IS PRIMARY DIVISION” prompt, type **Y** (YES).

```
VA FileMan 22.  
Select OPTION: 1 ENTER OR EDIT FILE ENTRIES  
INPUT TO WHAT FILE: STATION NUMBER (TIME SENSITIVE)  
EDIT WHICH FIELD: ALL// <ENTER>  
Select STATION NUMBER (TIME SENSITIVE) REFERENCE NUMBER: 2  
Are you adding '2' as a new STATION NUMBER (TIME SENSITIVE) (the 2ND)?  
No// Y  
STATION NUMBER (TIME SENSITIVE) EFFECTIVE DATE: T (March 7, 2010)  
STATION NUMBER (TIME SENSITIVE) MEDICAL CENTER DIVISION: FT.DEFIANCE  
STATION NUMBER (TIME SENSITIVE) STATION NUMBER: 8051  
EFFECTIVE DATE: MAR 7,2010// T (MAR 07, 2010)  
MEDICAL CENTER DIVISION: FT.DEFIANCE//  
STATION NUMBER: 8051//  
IS PRIMARY DIVISION: Y (YES)
```

Figure 3-2: Update station number using ENTER OR EDIT FILE ENTRIES option

3. Deactivate the old station number in the STATION NUMBER file. Sample entries for the following prompts are shown in bold in Figure 3-3.
 - a. At the “STATION NUMBER (TIME SENSITIVE) REFERENCE NUMBER” prompt, type the reference number for the station number to be deactivated.
 - b. At the “REFERENCE NUMBER” prompt, press Enter to confirm the reference number selected in the previous step.
 - c. At the “EFFECTIVE DATE” prompt, press Enter to accept the date shown.
 - d. At the “MEDICAL CENTER DIVISION” prompt, press Enter to accept the division name shown.
 - e. At the “STATION NUMBER” prompt, press Enter to accept the station number shown.
 - f. At the “IS PRIMARY DIVISION” prompt, type @ to remove the default value of “YES,” or press Enter if the default value is blank.
 - g. At the “INACTIVE” prompt, type **YES (INACTIVE)**.
 - h. At the “OTHER INSTITUTION” prompt, press Enter.
 - i. At the “INTEGRATION NAME” prompt, type a caret (^) to exit FileMan.

```
Select STATION NUMBER (TIME SENSITIVE) REFERENCE NUMBER: 1  
07-18-04 FT.DEFIANCE 3842  
REFERENCE NUMBER: 1//  
EFFECTIVE DATE: Jul 18, 2004//  
MEDICAL CENTER DIVISION: Ft.Defiance//  
STATION NUMBER: 3842//  
IS PRIMARY DIVISION: YES// @  
INACTIVE: YES - INACTIVE//  
OTHER INSTITUTION:  
INTEGRATION NAME: ^
```

Figure 3-3: Deactivate old station number

3.2 Update the INSTITUTION File

1. Use the FileMan INQUIRE TO FILE ENTRIES option to check the entries in the INSTITUTION file, as shown below.

```
NUMBER: 3842                NAME: FORT DEFIANCE INDIAN HOSPITAL
STATE: ARIZONA              STATUS: Local
STREET ADDR. 1: CORNER OF HWY N12 & N7
CITY: FT.DEFIANCE          ZIP: 86504
STATION NUMBER: 3842        AGENCY CODE: IHS
POINTER TO AGENCY: IHS
CODING SYSTEM: VASTANUM     ID: 401024
FACILITY DEA NUMBER: AP4939584 NPI: 1700962131
```

Figure 3-4: Check entries in INSTITUTION file

In this example **DA=3842**.

2. Execute a FileMan **^DIE** call at the programmer prompt to edit the preexisting station number, replacing it with the station number identified for this facility (see bold text below).

```
S DA=3842                    < replace 3842 w/ YOUR DUZ(2) >
S DIE="^DIC(4," ,DR="99////8051" < replace 8051 with NEW station# >
D ^DIE
```

Figure 3-5: Example programmer mode

3. Print the entry from the INSTITUTION file to verify the station number update.

```
NUMBER: 3842                NAME: FORT DEFIANCE INDIAN HOSPITAL
STATE: ARIZONA              STATUS: Local
STREET ADDR. 1: CORNER OF HWY N12 & N7
CITY: FT.DEFIANCE          ZIP: 86504
STATION NUMBER: 8051      AGENCY CODE: IHS
POINTER TO AGENCY: IHS
CODING SYSTEM: VASTANUM     ID: 401024
FACILITY DEA NUMBER: AP4939584 NPI: 1700962131
EFFECTIVE DATE/TIME: MAY 07, 2007 STATUS: ACTIVE
```

Figure 3-6: Check updated entry in INSTITUTION file

3.3 Install the Routines

Sites running PIMS Scheduling patch 1011 or earlier must restore the following routines:

- D ^%RI on the **vasite.rsa**
- D ^%RI on the **bsdvar.rsa**

3.4 Update the MEDICAL CENTER DIVISION File

Use the FileMan ENTER OR EDIT FILE ENTRIES option to update the MEDICAL CENTER DIVISION file with the new station number. Sample entries for the following prompts are shown in bold in Figure 3-3.

1. At the “Select OPTION” prompt, type **1** (ENTER OR EDIT FILE ENTRIES).
2. At the “INPUT TO WHAT FILE” prompt, type **MEDICAL CENTER DIVISION**.
3. At the “EDIT WHICH FIELD” prompt, type **FACILITY NUMBER**.
4. At the “Select MEDICAL CENTER DIVISION NAME” prompt, type the name of the facility.
5. At the “FACILITY NUMBER” prompt, type the new station number.

```
Select OPTION: 1  ENTER OR EDIT FILE ENTRIES

INPUT TO WHAT FILE: INSTITUTION// MEDICAL CENTER DIVISION
                               (4 entries)

EDIT WHICH FIELD: ALL// FACILITY NUMBER
THEN EDIT FIELD:

Select MEDICAL CENTER DIVISION NAME:  <FORT DEFIANCE INDIAN HOSPITAL
FACILITY NUMBER: 7247// 8051
```

Figure 3-7: Update MEDICAL CENTER DIVISION file

4.0 Lab Instructions for Station Number Update

Coordinate these operations with the Lab supervisor.

Note: Be sure no lab entries are waiting for results. Ask the Lab supervisor to ensure that all lab entries are complete.

4.1 Stop the Lab Interface

1. Stop the HLZTCP routine. (The Lab Interface uses the HLZTCP routine to communicate with the DI engine).
2. Delete the HLLP routine from TaskMan if it exists.

4.2 Update the DI Interface Engine

Refer to the DI manual for information on using the DI interface engine's configuration utility.

Figure 4-1 shows the configuration utility in use at Fort Defiance Indian Hospital. The utility at your site may look different.

1. Stop the DI interface engine. (Refer to the DI manual for instructions.)
2. Using the DI interface engine's configuration utility, type the new station number into the **770 DHCP Station Number** field.

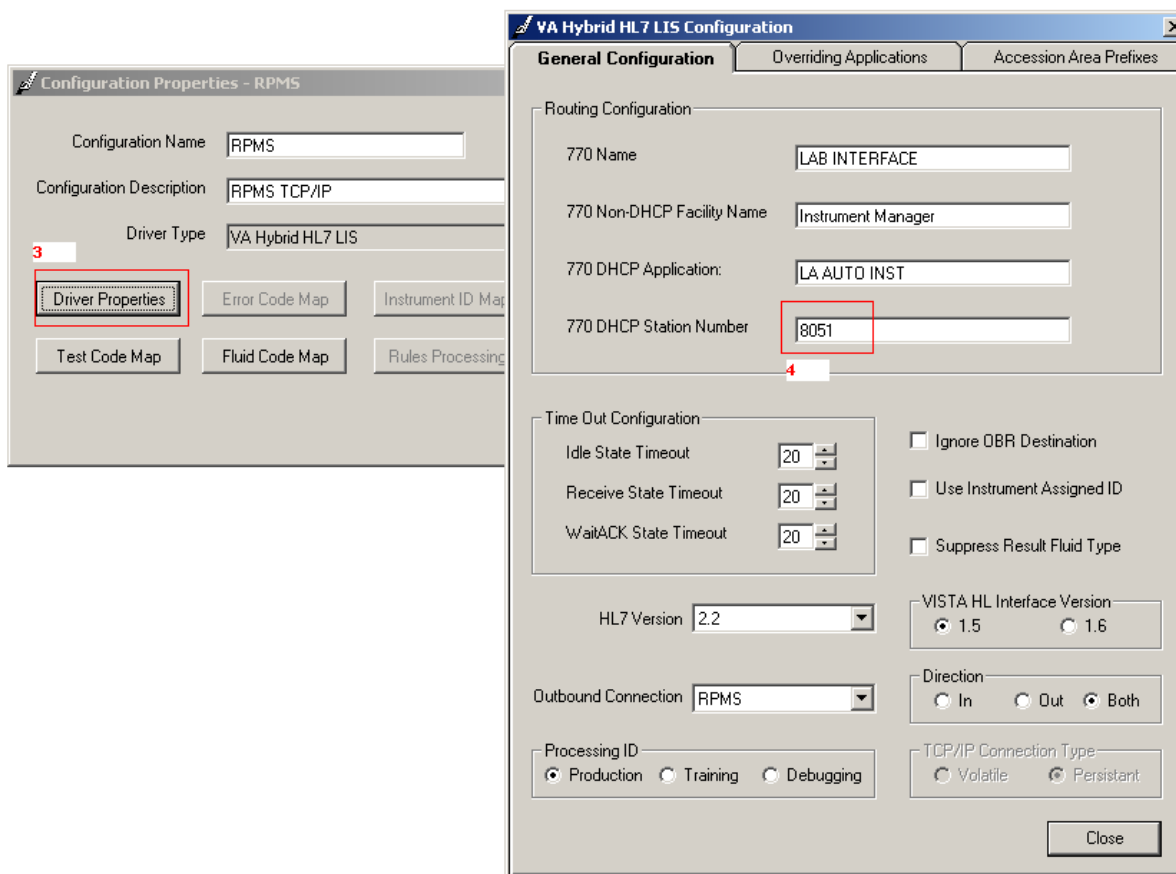


Figure 4-1: Example of DI interface engine configuration utility with the **770 DHCP Station Number** field highlighted

4.3 Update the LAB INTERFACE 2 Entry in FILE 770

Use the FileMan ENTER OR EDIT FILE ENTRIES option to update FILE 770 with the new station number. Sample entries for the following prompts are shown in bold in Figure 4-2.

1. At the “EDIT WHICH FIELD” prompt, press Enter to accept the default (ALL).
2. At the “Select HL7 NON-DHCP APPLICATION PARAMETER NAME” prompt, type **Lab**.
3. At the “NAME” prompt, press Enter to accept the default.
4. At the “DHCP STATION NUMBER” prompt, type a question mark (?) to display help on this prompt, or type the name of the facility whose station number is being updated.
5. At the “Do you want the entire INSTITUTION List?” prompt, type N.

6. At the “DHCP STATION NUMBER” prompt, type **DEMO HOSPITAL**.
7. At the NON-DHCP FACILITY NAME” prompt, type a caret (^) to update the field to the new station number.
8. At the “Select HL7 NON-DHCP APPLICATION PARAMETER NAME” prompt, type **Lab** to verify new station number.
9. At the “NAME” prompt, press Enter to accept the default.
10. At the “DHCP STATION NUMBER” prompt, the new station number should be the default, press Enter to accept the new station number default.

```
INPUT TO WHAT FILE: HL7 NON-DHCP APPLICATION PARAMETER//
EDIT WHICH FIELD: ALL//
Select HL7 NON-DHCP APPLICATION PARAMETER NAME:   Lab Interface      1601
Instrument Manager      LA AUTO INST
NAME: Lab Interface//
DHCP STATION NUMBER: 1601//  ?
    The station number of the DHCP site that will receive/send HL7 messages to
    the non-DHCP application.
    Answer with INSTITUTION NAME, or STATUS, or STATION NUMBER,
    OFFICIAL VA NAME, or CURRENT LOCATION, or CODING SYSTEM/ID PAIR, or NPI,
    or STATUS, or NAME (CHANGED FROM), or CODING SYSTEM

Do you want the entire INSTITUTION List? N (No)
DHCP STATION NUMBER: 1601// DEMO HOSPITAL      NASHVILLE NON-IHS      CHEROKEE
01      NC HOSPITAL 8999

NON-DHCP FACILITY NAME: Instrument Manager// ^

Select HL7 NON-DHCP APPLICATION PARAMETER NAME:   Lab Interface      8999
Instrument Manager      LA AUTO INST
NAME: Lab Interface//
DHCP STATION NUMBER: 8999// <new station number>
```

Figure 4-2: Update LAB INTERFACE 2 entry in FILE 770

4.4 Update the UNIVERSAL INTERFACE Entry in FILE 62.48

Use the FileMan ENTER OR EDIT FILE ENTRIES option to update FILE 62.48 with the universal interface entry. Sample entries for the following prompts are shown in bold in Figure 4-3.

1. At the “INPUT TO WHAT FILE” prompt, type **LA7 MESSAGE PARAMETER**.
2. At the “EDIT WHICH FIELD” prompt, type **REMOTE SYSTEM ID**.
3. At the “EDIT WHICH REMOTE SYSTEM ID SUB-FIELD” prompt, press Enter to accept the default.

4. At the “Select LA7 MESSAGE PARAMETER CONFIGURATION” prompt, type **UNIVERSAL INTERFACE**.
5. At the “Select REMOTE SYSTEM ID” prompt, press Enter to accept the default.
6. At the “Replace” prompt, type the old station number and press Enter.
7. At the “With:” prompt, type new station number and press Enter to accept.

```
Select OPTION: 1  ENTER OR EDIT FILE ENTRIES
INPUT TO WHAT FILE: LA7 MESSAGE PARAMETER//
EDIT WHICH FIELD: ALL// REMOTE SYSTEM ID  (multiple)
  EDIT WHICH REMOTE SYSTEM ID SUB-FIELD: ALL//
THEN EDIT FIELD:

Select LA7 MESSAGE PARAMETER CONFIGURATION:  UNIVERSAL INTERFACE
Select REMOTE SYSTEM ID: Lab InterfaceInstrument ManagerLA AUTO INST1601
  // Lab InterfaceInstrument ManagerLA AUTO INST1601
  REMOTE SYSTEM ID: Lab InterfaceInstrument ManagerLA AUTO INST1601
    Replace 1601 With 8999  Replace
    Lab InterfaceInstrument ManagerLA AUTO INST8999
Select REMOTE SYSTEM ID:
```

Figure 4-3: Update UNIVERSAL INTERFACE entry in FILE 62.48

4.5 Restart the Lab Interface

1. Start HLLP using the HL7 MAIN MENU option.
2. Select the MESSAGE MANAGEMENT option.
3. Select OLD HL7 V1.5 OPTIONS.
4. Select 2 (Initiate Background Task).

Note: You must select a non-DHCP application for which an HL7 device has been defined

Contact Information

If you have any questions or comments regarding this distribution, please contact the OIT Help Desk (IHS).

Phone: (505) 248-4371 or (888) 830-7280 (toll free)

Fax: (505) 248-4363

Web: <http://www.ihs.gov/GeneralWeb/HelpCenter/Helpdesk/index.cfm>

Email: support@ihs.gov